

Systemic Insect Spray

with **SYSTEMAXX**

TRUSTED SINCE 1926

BONIDE®

Shoots 25'
or gentle spray
for shrubs

Kills insects and prevents new infestations

**For roses, flowers, bedding plants,
listed fruit & nuts, shrubs,
ground covers and trees**

ACTIVE INGREDIENT:

Imidacloprid 1.47%

OTHER INGREDIENTS: 98.53%

TOTAL: 100.00%

EPA Est. No. 4-NY-1 EPA Reg. No. 53883-205-4

For Outdoor Residential Use Only

**NOT FOR SALE, USE OR DISTRIBUTION IN or INTO
Nassau, Suffolk, Kings or Queens Counties, New York.**

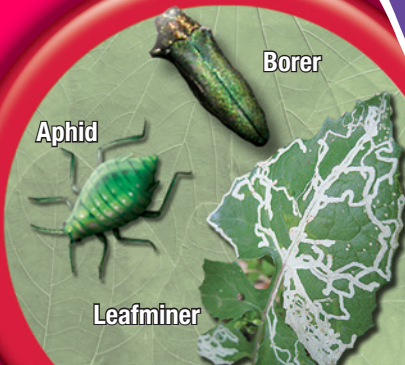
Keep Out Of Reach Of Children

CAUTION (See Back Panel Booklet for Additional
Ingredients and Precautionary Statements)

Aphid

Borer

Leafminer



Systemic Insect Spray

with **SYSTEMAXX**

Ready to Spray

- ✓ Kills adelgids, aphids, listed borers, beetles & bugs, leafminers, scale, and other listed pests
- ✓ Cannot be washed off by rain or water
- ✓ No Mixing, No Measuring-just connect to the hose and begin spraying
- ✓ Lasts for weeks

For Outdoor Residential Use Only.
EPA Est. No. 4-NY-1 EPA Reg. No. 53883-205-4
©Bonide Products, LLC All Rights Reserved
Distributed by: Bonide Products, LLC
6301 Sutliff Road
Oriskany, NY 13424

BN

DIRECTIONS FOR USE

It is a violation of Federal Law to use this product in a manner inconsistent with its labeling.

Shake well before using. For outdoor foliar applications, follow these directions to protect pollinators:



Do not apply this product while bees are foraging. Do not apply this product to plants that are flowering. Only apply after all flower petals have fallen off.

RESTRICTIONS FOR ALL USES:

- Do not allow children and pets to re-enter the treated area until after the spray has dried.
- Do not spray the product into fish pools, ponds, streams, or lakes.
- Do not allow this product to contact plants in bloom if bees are foraging in the treatment area.
- Regardless of application method, do not apply more than 9.4 oz. Imidacloprid per 1,000 sq. ft. per year.
- Do not apply this product, by any application method to linden, basswood, or other *Tilia* species.

Read and follow all label directions.

READY-TO-SPRAY INSTRUCTIONS

1. Make sure knob control lever is in "OFF" position, then connect sprayer to garden hose.
2. When spraying low growing groundcovers and small shrubs, twist the sprayer hood to the "FAN" position. When spraying taller trees, shrubs and ornamentals, twist the sprayer hood to the "STREAM" position for extended reach and more uniform coverage.
3. Turn water on at faucet. To begin spraying, turn knob control lever to "ON" position. The product mixes automatically with the water as you spray.

4. To stop spraying, turn knob control lever to the "OFF" position. Turn off water at the faucet. To relieve pressure, turn knob control lever to the "ON" position and point the sprayer away from any desirable plants before disconnecting the spray nozzle from the garden hose.

ESTABLISHED ORNAMENTALS IN RESIDENTIAL AREAS

This product is for use on outdoor trees, shrubs and groundcovers in landscape plantings as listed in the table below:

RESTRICTIONS FOR ORNAMENTALS:

- Do not apply to soil that is frozen or waterlogged.
- Keep people and pets off treated area until it has dried.
- Do not apply this product, by any application method to linden, basswood, or other *Tilia* species.
- Do not apply this product while bees are foraging.
- Do not apply to plants that are blooming. Only apply after all flower petals have fallen off.
- Do not apply more than 9.4 oz. of this product per 1,000 sq. ft. per year.

Landscape Plantings	Types of Plants
Roses, flowers, bedding plants and flowering shrubs	Azalea, begonia, camellia, cherry laurel, geranium, gardenia, hydrangea, impatiens, ligustrum, peonies, primrose, tea roses, salvia, zinnias and similar herbaceous plants
Evergreen and leafy shrubs and woody ornamentals	Arborvitae, boxwood, cotoneaster, euonymus, holly, juniper, laurel, privet, spruce, yews and similar plants
Groundcovers	English ivy, Dichondra, ivy, pachysandra, vinca and other similar plants

This product is for use to kill the pests listed in the table on outdoor trees and shrubs.

Pests Controlled
Adelgids, Aphids, Black Vine Weevil Larvae, Borers: Roundheaded Borers (incl. Eucalyptus Longhorned Borers and Asian Longhorned Beetles), Flatheaded Borers (incl. Bronze Birch, Alder Borers, and Emerald Ash Borers), Japanese Beetles (Adult), Lacebugs, Leaf Beetles (incl. Elm Leaf Beetles and Viburnum Leaf Beetles), Leafhoppers (incl. Glassy-winged Sharpshooters), Leafminers (incl. Birch Leafminers, Mealybugs, Pine Tip Moth Larvae, Psyllids, Royal Palm Bugs, Sawfly Larvae, Scales (incl. Armored Scale (suppression) and Soft Scale), Thrips (suppression), Whiteflies

FOLIAR APPLICATIONS

Use this product as a foliar spray to provide contact control of larvae, nymphs or adults of the following insect pests: adelgids, aphids, Japanese beetles, lace bugs, leaf beetles (including elm leaf beetles and viburnum leaf beetles), leafhoppers (including glassy-winged sharpshooter), mealybugs, psyllids, sawfly larvae, thrips (suppression) and whiteflies.

Application Instructions

Apply when insects first appear and before high pest populations are established, prior to blooming or after all flower petals have fallen off. Retreat when re-infestation occurs, when high pest pressure is observed or repeat applications on an as-needed basis with 10-14 day intervals between applications, not to exceed the maximum rate.

How to Apply

Foliar applications with water must be made as a thorough cover spray to provide uniform distribution. Make application prior to blooming or after all flower petals have fallen off. Spray to wet all foliage (leaves, stems and branches). Target the undersides of the leaves and try to penetrate dense foliage with the spray droplets.

APPLE, PEAR, PEACH, PLUM, CHERRY AND PECAN TREES

For plants established in residential areas as ornamental plantings or for fruit/nut consumption.

RESTRICTIONS:

- Do not apply pre-bloom or during bloom or when bees are foraging.

Plants	Insect Pests Controlled
Apple and Crabapple Pear, Common and Oriental	Aphids (except woolly apple aphid), Japanese beetles, leafhoppers (including glassy-winged sharpshooter), leafminers, mealybugs, and San Jose scale
Peach, Plum and Cherry	Aphids, cherry fruit fly maggot, Japanese beetles, leafhoppers, plant bugs, San Jose scale and stink bugs
Pecan	Yellow pecan aphid, black margined aphid, pecan leaf phylloxera, pecan spittlebug, pecan stem phylloxera

Application Instructions

Timing of applications should coincide with vulnerable stages of the pests. The calendar schedules below are to be used as a guide to application timing but should not be considered a forecast or predictor for treating these insect pests. Consult your State Agricultural Extension Service agent for specific schedules and guidance for your local area. In addition, observe these guidelines for treating the following pests:

- **Aphids:** Make application when aphids first appear and before the leaves are rolled as a result of these pests.
- **Leafhoppers:** Make applications when leafhoppers first appear, during the nymph stage.

- **Leafminers:** Make two applications with intervals of 10 or more days. Make the first application soon after the petal fall is complete. A second application at the same dosage 10 days later should be applied to the early instar larvae.
- **Mealybugs:** Thorough and uniform coverage is necessary.
- **San Jose Scale:** Make application when crawlers are present. Ensure complete spray coverage of the branches, stems and leaves.
- **Spittlebug:** Apply when spittle masses are present and as new generations develop.

FOR APPLES AND PEARS

Apply full cover sprays after the petal fall is complete. Continue application until the target insects are controlled. Apply up to five (5) foliar applications per season and allow 10 or more days between insecticide applications. Allow seven (7) days between the final application and the apple or pear harvest. For Apples and Pears, do not apply more than 3.2 gallons of this product per acre per year.

Stage of Trees	Approximate Dates	Apple	Pear
Petal fall	May 22		
1st cover spray, 5-10 days after petal fall	June 1	x	x
2nd cover spray, 10-14 days later	June 15	x	x
3rd cover spray, 10-14 days later	June 29	x	x
4th cover spray, 10-14 days later	July 13	x	x
5th cover spray, 10-14 days later	July 27	x	x
Waiting period before harvest	-	7 days	7 days

FOR PEACHES

Apply full cover sprays after the petal fall is complete. Continue application until the listed insects are controlled sufficiently. Use up to three (3) foliar applications per season and allow at least 7 days between applications. For Peaches, do not apply more than 2.4 gallons of this product per acre per year.

Stage of Trees	Approximate Dates	Peach
Petal fall	May 25 - June 1	
1st cover spray, 5-10 days after petal fall	June 1	x
2nd cover spray, 7-14 days later	June 8 - 14	x
3rd cover spray, 7-14 days later	June 15 - 21	x
Waiting period before harvest	-	0 days

FOR CHERRIES AND PLUMS

Apply full cover sprays after the petal fall is complete. Continue application until the target insects are controlled sufficiently. Apply up to five (5) foliar applications per season and allow 10 or more days between insecticide applications. Allow seven (7) days between the final application and the cherry or plum harvest. For Cherries and Plums, do not apply more than 3.2 gallons of this product per acre per year.

Stage of Trees	Approximate Dates	Cherry	Plum
Petal fall	May 22		
1st cover spray, 5-10 days after petal fall	June 1	x	x
2nd cover spray, 10-14 days later	June 15	x	x
3rd cover spray, 10-14 days later	June 29	x	x
4th cover spray, 10-14 days later	July 13	x	x
5th cover spray, 10-14 days later	July 27	x	x
Waiting period before harvest	-	7 days	7 days

FOR PECANS

Apply full cover sprays after the petal fall is complete. Continue application until the listed insects are controlled sufficiently. Use up to three (3) foliar applications per season and allow at least 7 days between applications. Allow seven (7) days between the final application and the pecan harvest. For Pecans, do not apply more than 2.9 gallons of this product per acre per year.

Stage of Trees	Approximate Dates	Pecan
Petal fall	Late April	
1st cover spray, 5-10 days after petal fall	May 1	x
2nd cover spray, 10-14 days later	May 15	x
3rd cover spray, 10-14 days later	May 30	x
Waiting period before harvest	-	7 days

How to Apply

Foliar applications with water should be made as a thorough cover spray to provide uniform distribution. Spray to wet all foliage (leaves, stems and branches). Target the undersides of the leaves and try to penetrate dense foliage with the spray droplets.

LAWNS

This product kills White Grubs, Mole Crickets, European Crane Fly Larvae and other pests listed in the table below. This product forms a protective barrier in the soil which provides control of listed pests all season long. When applied early, this product kills grubs, mole crickets and European crane fly before they hatch and damage lawns. Contact your County Extension Agent for the best dates to apply in your area. This product may be sprayed over soil or mulch. Remove weed barrier before applying.

Use on lawns and yards including the following grasses:

Cool Season or Northern lawns	Warm Season or Southern Lawns
Kentucky bluegrass, Perennial ryegrass, Tall fescue, fescues (red or fine leaf)	Bermudagrass, Common and hybrid Centipedegrass, St. Augustinegrass, Zoysiagrass, Buffalograss, Bahiagrass

Pests Controlled

Pest	Indication of Damage to Lawns
Adelgids, Annual bluegrass Weevil, Aphids, Billbugs, Bluegrass Weevils, Chinch bug (suppression), Cutworms (suppression), Elm leaf beetle, European crane fly larvae, Lacebugs, Leafhoppers, Leafminers, Mealybugs, Mole crickets, Sawfly larvae, Sod webworm, Thrips, Whiteflies, White Grubs (including larvae of Asiatic Garden Beetle, Black Turfgrass Ataenais, Chafers, Japanese Beetle, May or June Beetle, and Oriental Beetle)	<p>European crane fly larvae often cause damage by feeding on grass roots and disrupting the soil surface.</p> <p>Mole crickets often cause extensive damage by tunneling through lawns. Some species also feed on roots. Tunneling uproots the grass so it easily dries out. Lawns turn yellow, become thin, weedy and can eventually die.</p> <p>White grubs cause extensive damage to lawns by feeding on grass roots. Grass turns yellow, then brown and dies. Grubs chew off roots so that the grass is easily pulled up in pieces in your hands. You can roll it back like a carpet to reveal the grubs. If patches of dead grass appeared in your lawn late last summer, check for grubs.</p>

APPLICATION INSTRUCTIONS

Treat for grubs from the beginning of May to the end of October, or when first noticed. For grub (larvae) control, ½ inch of rainfall or irrigations should occur within 24 hours after application. Thoroughly wet the lawn a few hours after application. For armyworm and cutworm control, do not irrigate treated areas within 24 hours after application of this product. Contact your State Agricultural Extension Service agents for additional recommendations for your area.

RESTRICTIONS FOR LAWNS:

- Do not water lawn within one hour after applying.
- Do not apply this product to waterlogged areas.
- Do not mow treated lawn until after adequate rainfall or irrigation has occurred.
- Do not exceed one application of this product per season for lawns.
- Do not allow people and pets to re-enter the treated area until after the spray has dried.
- Do not allow this product to contact plants in bloom if bees are foraging in the treatment area.
- Do not apply more than 9.4 oz. of Imidacloprid per 1,000 sq. ft. per year.

READY-TO-SPRAY INSTRUCTIONS - LAWNS

This product is a ready-to-spray formulation. Attach the bottle to your garden hose according to the directions below. Water will mix with this product as you spray.

1. Measure area to be sprayed. Calculate "square feet" by multiplying length times width. This 32 fl. oz. container will cover up to 5,333 sq. ft.
2. Make sure sprayer knob control lever is in "OFF" position, then connect sprayer to garden hose.
3. When spraying turf and other low foliage, twist sprayer hood to the "FAN" position for more uniform coverage.
4. Turn water on at faucet. To begin spraying, turn knob control lever to "ON" position. The product mixes automatically with the water as you spray.
5. To stop spraying, turn knob control lever to the "OFF" position. Turn off water at the faucet. To relieve pressure, turn knob control lever to the "ON" position and point the sprayer away from any desirable plants before disconnecting the spray nozzle from the garden hose.

Spray evenly over the measured area. This 32 fl. oz. container covers approximately 5,333 sq. ft. For heavier infestations, use 32 fl. oz. to treat 3,560 sq. ft.

STORAGE AND DISPOSAL

Pesticide Storage: Store in original container in a cool, dry place, out of the reach of children, preferably a locked storage cabinet. Protect from freezing.

Pesticide Disposal and Container Handling: If empty: Nonrefillable container. Do not reuse or refill this container. Rinse the empty product container thoroughly and disperse the rinse water on lawn as part of the application. Offer for recycling if available. If recycling is not available: then dispose of container in sanitary landfill or, if allowed by State and local authorities, by burning. If burned, stay out of smoke.

If partly filled: It is best to use all of the product in accordance with label directions. If it is necessary to dispose of unused product, please call your local solid waste agency. Never place unused product down any indoor or outdoor drain.

FIRST AID

Have the product container or label with you when calling a poison control center or doctor, or going for treatment. You may also contact SafetyCall International (866) 897-8050 for emergency medical treatment information.

IF IN EYES:	<ul style="list-style-type: none">• Hold eye open and rinse slowly and gently with water for 15-20 minutes.• Remove contact lenses, if present, after the first 5 minutes, then continue rinsing eye.• Call a poison control center or doctor for treatment advice.
IF SWALLOWED:	<ul style="list-style-type: none">• Call a poison control center or doctor immediately for treatment advice.• Have affected person sip a glass of water if able to swallow.• Do not induce vomiting unless told by a poison control center or doctor.• Do not give anything by mouth to an unconscious person.

Note to Physician: No specific antidote is available. Treat the patient symptomatically.

PRECAUTIONARY STATEMENTS

HAZARD TO HUMANS AND DOMESTIC ANIMALS


CAUTION: Causes eye irritation. Avoid contact with skin, eyes, or clothing. Wash thoroughly with soap and water after handling and before eating, drinking, chewing gum, using tobacco, or using the toilet. Remove and wash contaminated clothing before reuse.

ENVIRONMENTAL HAZARDS

This pesticide is toxic to aquatic invertebrates. Do not apply directly to lakes, streams or ponds. Do not dump rinse water into sewers or other bodies of water. This pesticide is highly toxic to bees exposed to direct treatment or residues on blooming plants or weeds. Do not apply this product or allow it to drift to blooming plants or weeds when bees are foraging. Apply this product only as specified on this label.



**PROTECTION OF POLLINATORS APPLICATION RESTRICTIONS
EXIST FOR THIS PRODUCT BECAUSE OF RISK TO BEES AND OTHER INSECT
POLLINATORS. FOLLOW APPLICATION RESTRICTIONS FOUND IN THE
DIRECTIONS FOR USE TO PROTECT POLLINATORS.**

Look for the bee hazard icon  in the Directions for Use for each application site for specific use restrictions and instructions to protect bees and other insect pollinators.

This product can kill bees and other insect pollinators.

Bees and other insect pollinators will forage on plants when they flower, shed pollen, or produce nectar.

Bees and other insect pollinators can be exposed to this pesticide from:

- Direct contact during foliar applications, or contact with residues on plant surfaces after foliar applications
- Ingestion of residues in nectar and pollen when the pesticide is applied as a seed treatment, soil, tree injection, as well as foliar applications.

When Using This Product Take Steps To:

- Minimize exposure of this product to bees and other insect pollinators when they are foraging on pollinator attractive plants around the application site.
- Minimize drift of this product on to beehives or to off-site pollinator attractive habitat. Drift of this product onto beehives or off-site to pollinator attractive habitat can result in bee kills.

Information on protecting bees and other insect pollinators may be found at the Pesticide Environmental Stewardship website at:

<http://pesticidestewardship.org/PollinatorProtection/Pages/default.aspx>.

Pesticide incidents (for example, bee kills) should immediately be reported to the state/tribal lead agency. For contact information for your state, go to: www.aapco.org/officials.html
Pesticide incidents should also be reported to the National Pesticide Information Center at: www.npic.orst.edu or directly to EPA at: beekill@epa.gov

WARRANTY

Seller warrants that this product complies with the specifications expressed in this label. To the extent consistent with applicable law, Seller makes no other warranties, and disclaims all other warranties, express or implied, including but not limited to warranties of merchantability and fitness for the intended purpose. To the extent consistent with applicable law, Seller's liability or default, breach or failure under this label shall be limited to the amount of the purchase price. To the extent consistent with applicable law, Seller shall have no liability for consequential damages.