

TRUSTED SINCE 1926
BONIDE®

Bon-Neem™ II

Fungicide • Miticide • Insecticide

Ready to Use

For control of listed insects, diseases & mites
on vegetables, fruits, nuts, herbs, spices,
roses, flowers & shrubs around the home

Can be used up to day of harvest

ACTIVE INGREDIENTS:

Pyrethrins	0.02%
Piperonyl Butoxide, Technical	0.20%
Clarified Hydrophobic Extract of Neem Oil	0.90%

OTHER INGREDIENTS: 98.88%

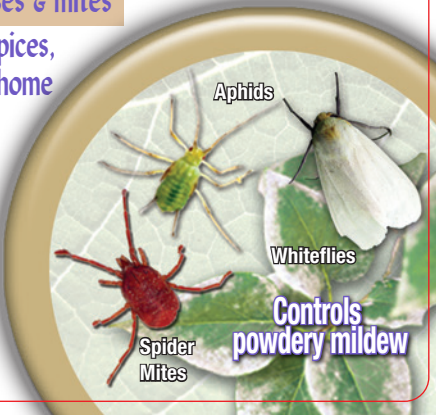
TOTAL 100.00%

EPA Est No. 4-NY-1

EPA Reg. No. 70051-74-4

Keep Out Of Reach Of Children

CAUTION (See Back Panel for Additional
Precautionary Statements)



Bon-Neem^{II}

Fungicide • Miticide • Insecticide



Ready to Use

- ✓ For use on fruits, vegetables, roses, flowers, shrubs and trees
- ✓ Kills over 240 listed insects
- ✓ For use indoors or outdoors
- ✓ Contains Pyrethrins, derived from Chrysanthemum flowers

EPA Est. No. 4-NY-1 EPA Reg. No. 70051-74-4
Buyers Guarantee Limited to Label Claims.
©Bonide Products, LLC All Rights Reserved
Distributed by: Bonide Products, LLC
6301 Sutliff Road, Oriskany, NY 13424

BN

DIRECTIONS FOR USE

It is a violation of Federal law to use this product in a manner inconsistent with its labeling.

GENERAL PRECAUTIONS

SHAKE WELL BEFORE AND DURING USE.

This product is a multi-purpose insecticide/fungicide/miticide. Kills eggs, larval and adult stages of insects. Prevents fungal attack of plants' tissues. Not for use in food handling areas. Do not apply to wilted or otherwise stressed plants, or to newly transplanted material prior to root establishment. When using in conjunction with beneficial insects, conduct a small trial to assure compatibility before using on a large scale. As with other products that contain oils, take care in timing applications to early morning/late afternoon/early evening to minimize the potential for leaf burn. Use with care on plants with tender tissue. Do not apply to known spray sensitive plant species such as impatiens flowers, fuchsia flowers, hibiscus flowers, some rose flowers, ornamental olive trees, red maples, some carnation varieties or similar plants without prior testing. Keep unprotected persons out of treated areas until sprays have dried.

FUNGICIDE USE

Where to use: On FRUITS, NUTS, VEGETABLES, HERBS, SPICES, ROSES, HOUSEPLANTS, FLOWERS, ORNAMENTALS, AND SHRUBS

Diseases controlled: Powdery mildew, black spot, downy mildew, anthracnose, rust, leaf spot, botrytis, needle rust, scab and flower, twig and tip blight.

How to use: This product is an effective fungicide for the prevention and control of various fungal diseases including powdery mildew, black spot, downy mildew, anthracnose, rust, leaf spot, botrytis, needle rust, scab and flower, twig and tip blight. As a preventative, apply this product on a 7 to 14 day schedule until the potential for disease development is no longer present. To control disease already present, apply this product on a 7 day schedule until disease pressure is eliminated. Then continue spraying on a 14 day schedule to prevent the disease from recurring. To prevent rust leaf spot diseases, anthracnose and scab, begin applications at the first sign of spring budding. To prevent powdery mildew, apply in mid-summer or when disease is first detected. Continue applications until disease pressure no longer exists. Thoroughly spray all plant leaf surfaces (including undersides of leaves) until foliage is uniformly wet, but not dripping. Excessive application is unnecessary and to be avoided.

INSECTICIDE USE

Where to use: On FRUITS, NUTS, VEGETABLES, HERBS, SPICES, ROSES, HOUSEPLANTS, FLOWERS, ORNAMENTALS, AND SHRUBS.

How to use: Apply this product at the first sign of listed insects/mites. This product is most effective when applied on a 7 to 14 day schedule. For heavy insect populations, spray on a 7 day schedule. Thoroughly spray all plant surfaces (including undersides of leaves) until foliage is uniformly wet, but not dripping. Excessive application is unnecessary and to be avoided.

Ants	Acrobat, Argentine, Bigheaded, Cornfield, Crazy, Field, Ghost, Harvester, Odorous House, Pavement, and Thief, (excluding Harvester, Fire, Pharaoh and Carpenter)
Beetles & Grubs	Asian Cerambycid Beetle, Asian Lady Beetle, Asparagus Beetle, Bean Beetles, Billbugs, Black Turfgrass Ataenius (adult), Blister Beetles, Blue Grass Billbug (adult), Brown Spruce Longhorn Beetle, Cadelles, Carrion Beetle, Catorama Beetles, Cone Beetles, Cottonwood Borer, Cottonwood Leaf Beetles, Colorado Potato Beetle, Cucumber Beetle (adult), Corn Rootworm (adult), Dermestid Beetles, Dung Beetles, Elmleaf Beetles, Emerald Ash Borer, European Chafer, Flatheaded Borer, Flea Beetles (Dichondra Flea Beetles), Fungus Beetles (Hairy Fungus Beetles, Black Fungus Beetles), Fuller Rose Beetles, Ground Beetles, Hoplia Beetles, Japanese Beetle, June Beetles, Locust Borer,

Beetles & Grubs cont.	Murmidiuss Beetles, Pine Bark Beetles (Black Turpentine Beetles, Southern Pine Beetles), Pine Engraver, Red Lily Beetles, Red Oak Borer, Rose Chafers, Rootworms, Spider Beetles (Brown Spider Beetles), Southern Chafer, Sycamore Leaf Beetle, Trogoderma Beetles, Virburnum Leaf Beetles, Weevils (Black Vine, Boll, Clover, Hyperodes (adult), Yellow Poplar, Plum Curculio, Rose Curculios, Pepper), White Grubs, Willow Leaf Beetles.
Caterpillars & Moths	Asian Pine Tip Moths, Armyworms (Fall Armyworms), Artichoke Plume Moth, Bagworms, Browntail Moths, Budworms (Jackpine, Spruce, Western Spruce), Cabbageworms, Cankerworms (Fall Cankerworms), Catapla Sphinx, Clearwing Borer, Codling Moth, Corn Earworm/Tomato Fruitworm, Cutworms (Climbing, Dingy (adult)), Diamondback Moth (adults and larvae), Douglas Fir Tussock Moth, Elm Spanworms, European Corn Borer, European Pine Shoot Moth, European Pine Tip Moth, Filbertworm, Green Fruitworm, Greenstriped Mapleworms, Gypsy Moths (adult and larvae), Heliopsis spp., Holly Budmoth, Hornworms (Poinsetta Hornworms, Tomato Hornworm), Inchworm, Iris Borer, Jeffery Pine Needleminers, Leafminers (Spotted tentiform leafminer, Azalea Leafminers, Oak Leafminers), Leafrollers, (Fruittree Leafrollers, Redbanded Leafroller, White Apple Leafroller), Leaf Tiers, Lesser Peach Tree Borer, Loopers, (Western Hemlock Loopers, Imported Cabbage Looper), Maple Leafcutters, Melon Worm,

Caterpillars & Moths continued	Nantucket Pine Tip Moth, Navel Orangeworm, Oak Leaf Skeletonizer, Oakworm Complex (California, Orangestriped, Redhumped), Oleander Caterpillars, Orange Tortrix, Oriental Fruit Moth, Peach Twig Borer, Pickleworm, Pink Scavenger Caterpillar, Pinworms (Tomato Pinworm), Pitch Pine Tip Moth, Ponderosa Pine Needleminer, Potato Tuberworm, Puss Caterpillar, Rindworm, Saddled Prominent Caterpillar, Spiny Elm Caterpillar, Spruce Needleminer, Squash Vine Borer, Subtropical Pine Tip Moth, Tent Caterpillars (Eastern, Forest), Walnut Caterpillar, Webworms (Garden, Sod, Tropical, Lawn Moths, Fall, Mimosa), Western Pine Tip Moth
Earwigs	Earwigs
Fleas	Fleas
Flies	Australian Sod Flies, Boxwood Leafminers, Chrysanthemum Leafminer, Crane Flies, Douglas Fir Midge, Fruit Fly/Small Fruit Flies, Gall Midges, Holly Leafminers, Love Bugs, Maggots (Apple Maggots, Onion Maggot (adult), Phorid Flies, Sciarid Flies (Mushroom Flies, Fungus Gnats), Walnut Husk Fly
Grasshoppers & Crickets	Crickets (Field Crickets, Mole Crickets (nymphs and young adult), Grasshoppers, Katyids

Mites	Clover Mites, European Red Mites, Eriophyid Mite, McDaniel Spider Mites, Pearleaf Blister Mites, Plant Mites, Spider Mites (Conifer Spider Mites (adult), Pacific Mites, Southern Red Mite (adult), Strawberry Mites, Two-spotted spider mites
Thrips	Greenhouse Thrips, Madrone Thrips, Onion Thrips, Western Flower Thrips
True Bugs	Aphids (Apple Aphid, Green Apple Aphids, Elm Leaf Aphid, Root Aphids, Rose Aphids, Rosy Apple Aphids, Wooly Apple Aphid), Boxelder bugs, Campylomma Bugs, Chinch Bugs (Southern Chinch Bugs), Cicadas (Periodical Cicadas), Glassy-winged Sharpshooter, Hackberry Nipplegall Makers, Harlequin Bugs, Lace Bugs, Leafhoppers (Rose Leafhoppers, White Apple Leafhoppers), Lygus Bug (Tarnished Plant Bug), Mealybugs, Mired Bug, Pear psylla, Psyllids (Red Gum Lerp Phyllid, Potato Psyllid), Royal Palm Bugs, Scale, Seedbugs, Stink bugs (Green Bugs), Spittlebug (Pine Spittlebug), Squash Bugs, Thorn Bugs, Whiteflies (Greenhouse, Sweet Potato)
Wasps	Birch Leafminers, Gall Wasps, Raspberry Horntail, Sawflies (Pear Sawflies, Pine Sawflies, Rose Slugs)
Other Arthropods	Firebrats, Millipedes, Pillbugs, Silverfish, Sowbugs, Spiders (excluding black widow and brown recluse), Springtails

USE RESTRICTIONS

Entry restrictions

Do not allow adults, children, or pets to enter the treated area until sprays have dried.

Application Restrictions

Do not apply this product in a way that will contact adults, children, or pets, either directly or through drift.

Remove pets, birds, and cover fish aquariums before spraying.

Not for use in outdoor misting systems.

Do not make applications during the rain.

Do not water the treated area to the point of run-off.

STORAGE AND DISPOSAL

Pesticide Storage: Keep from freezing. To be stored in original container and placed in areas inaccessible to children.

Pesticide Disposal and Container Handling: Nonrefillable container. Do not reuse or refill this container.

If empty- Place in trash or offer for recycling if available.

If partly filled- Call your local solid waste agency for disposal instructions. Never place unused product down any indoor or outdoor drain.

PRECAUTIONARY STATEMENTS

HAZARDS TO HUMANS AND DOMESTIC ANIMALS

CAUTION: Harmful if inhaled. Avoid breathing spray mist. Prolonged or frequently repeated skin contact may cause reactions in some individuals. Remove and wash contaminated clothing before reuse. Wash thoroughly with soap and water after handling and before eating, drinking, chewing gum, using tobacco or using the toilet.

FIRST AID

If inhaled:	<ul style="list-style-type: none">• Move the person to fresh air.• If person is not breathing, call 911 or an ambulance, then give artificial respiration, preferably mouth-to-mouth, if possible.• Call a poison control center or doctor for treatment advice.
If on skin or clothing:	<ul style="list-style-type: none">• Take off contaminated clothing.• Rinse skin immediately with plenty of water for 15-20 minutes.• Call a poison control center or doctor for treatment advice.
If in eyes:	<ul style="list-style-type: none">• Hold eye open and rinse slowly and gently with water for 15-20 minutes.• Remove contact lenses, if present, after the first 5 minutes, then continue rinsing eye.• Call a poison control center or doctor for treatment advice.
If swallowed:	<ul style="list-style-type: none">• Call a poison control center or doctor immediately for treatment advice.• Have person sip a glass of water if able to swallow.• Do not induce vomiting unless told to do so by a doctor.• Do not give anything by mouth to an unconscious person.
Have the product container or label with you when calling a poison control center or doctor, or going for treatment. Hot Line Number 1-800-858-7378.	

ENVIRONMENTAL HAZARDS

This product is toxic to aquatic organisms including fish and invertebrates. To protect the environment, do not allow pesticide to enter or run off into storm drains, drainage ditches, gutters or surface waters. Applying this product in calm weather when rain is not predicted for the next 24 hours will help to ensure that wind or rain does not blow or wash pesticide off the treatment area. Rinsing application equipment over the treated area will help avoid run off to water bodies or drainage systems.

BEE HAZARD

This product is highly toxic to bees exposed to direct treatment on blooming crops or weeds. Do not apply this product or allow to drift to blooming crops or weeds while bees are actively visiting the treatment area.

PHYSICAL AND CHEMICAL HAZARDS

Do not use or store near heat or open flame.

Seller warrants that this product complies with the specifications expressed in this label. To the extent consistent with applicable law, Seller makes no other warranties, and disclaims all other warranties, express or implied, including but not limited to warranties of merchantability and fitness for the intended purpose. To the extent consistent with applicable law, Seller's liability or default, breach or failure under this label shall be limited to the amount of the purchase price. To the extent consistent with applicable law, Seller shall have no liability for consequential damages.