

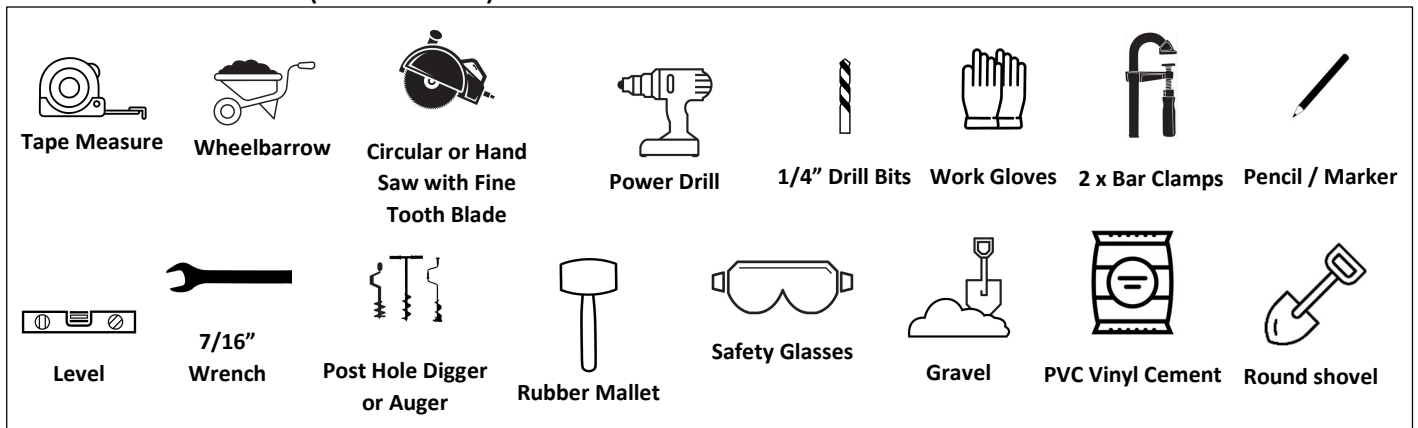
Pre-Assembled Gate (6'x4') Installation Guide

READ ALL INSTRUCTIONS CAREFULLY BEFORE BEGINNING THE INSTALLATION

Important: Contact your local authorities prior to digging any post holes to locate and identify possible buried utilities.

Prior to installation, it is the responsibility of the installer to meet all code and safety requirements, and to obtain all required building permits. Contact your local authorities regarding any local zoning laws, neighborhood associations and/or historic districts that may regulate size, type, placement, and ability of fencing. Ensure compliance before starting your fence installation. J. Sonic Services and its distributors shall not be held liable for improper or unsafe installations.

TOOLS AND MATERIALS (NOT INCLUDED)



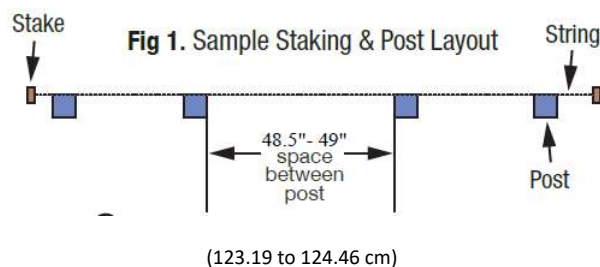
PREPARATION

Careful planning and measurement of your fence project is essential, as moving posts after the concrete sets is extremely difficult.

Consider soil conditions, slopes, utility locations and property lines when positioning posts.

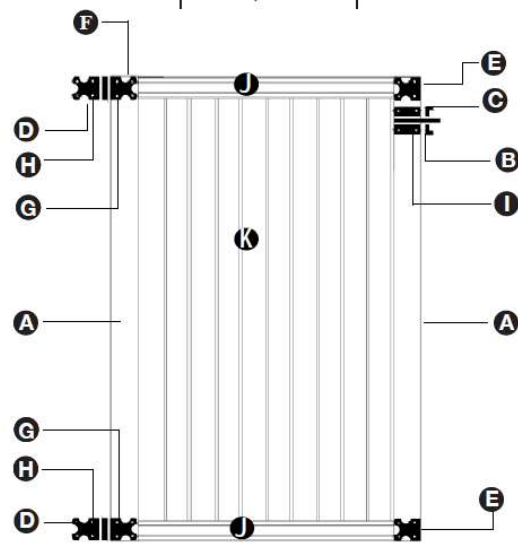
Run a string line to locate the fence line and establish the outside faces of your posts (Fig. 1).

Mark the centers of the post locations for your gate. This gate can accommodate openings.



COMPONENTS

Item	Product Name
A	Gate Jambs
B	Striker
C	Latch
D	Hinged Bracket
E	Jamb Bracket
F	Jamb Cap
G	Through Bolts
H	Self tapping screw
I	Screws
J	Rail
K	Fence Panel



SETTING POSTS

1a. Once you have confirmed the proper spacing, use spray paint to mark the positions of all the posts.

1b. Dig or auger post holes. The vinyl posts require a 10" (25.4 cm) diameter hole and must be at least 30" (76.2 cm) below grade. In frost regions, the post holes should be deep enough to extend below the frost line.

1c. The gate can be set up for right or left swing. The post that will be used as your hinge side **MUST HAVE AN ALUMUNMUM INSERT** (product sold separately) for greater strength.

1d. Pour concrete around the post approximately 6" at a time. Tamp to eliminate air pockets and continually check that they are level.

1f. Before the concrete sets, sight down the fence line to be sure all posts align, and are at the same height. High posts can be driven deeper by placing a wooden block across the top and tapping them down with a rubber mallet. Allow concrete to set 24-48 hours.

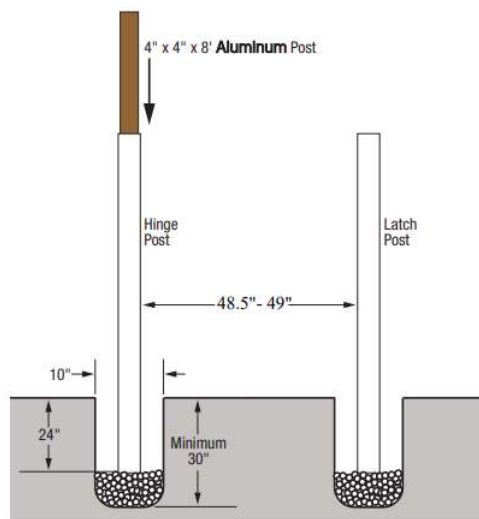
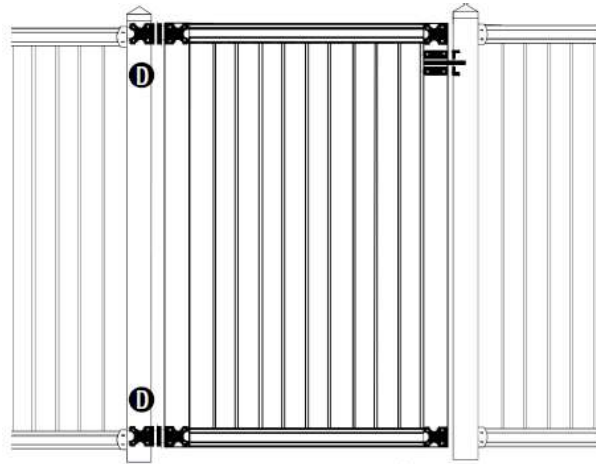


Fig 2. Setting Posts

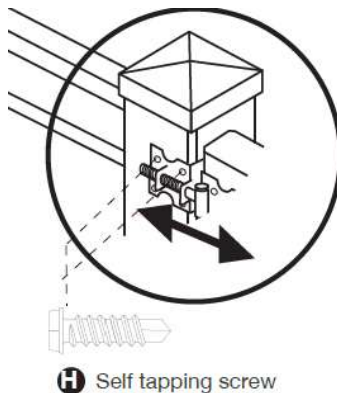
INSTALLING THE GATE

1a. Align the top and bottom rails of the assembled gate with the rails of the existing fence. There must be adequate clearance from the bottom rail to the ground as well.

1b. Use clamps to hold hinged brackets against the hinge post. Pre-drill and install screws in both hinged brackets (D).

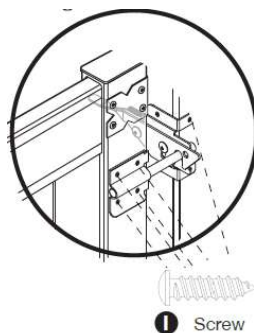


1c. Adjust the hinges as necessary so the gate is equally spaced between both posts.



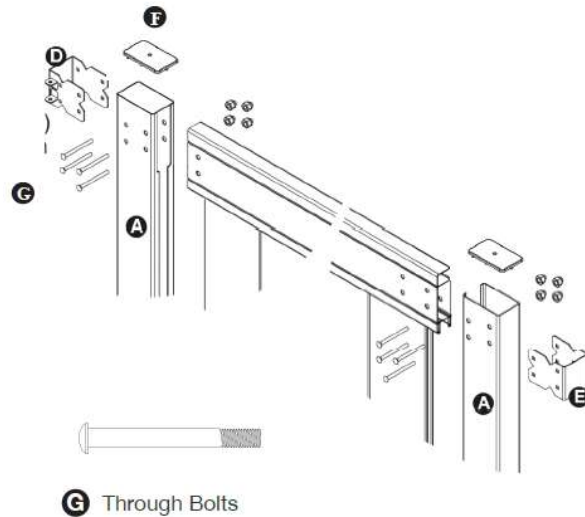
Installing Striker & Latch

1d. Attach striker (B) to the gate in desired location. Using the striker as a guide, mount the latch (C) to the latch post. The latch is set up for right hand swing. To reverse this, remove the spring and 2 bolts, flip the base and reinstall.



Installing Hardware

- 1e. The hinged brackets (D) and jamb brackets (E) should be located on the gate jamb in line with the top and bottom rail.
- 1f. Use the brackets as a guide and drill holes being sure to pass through the gate jamb and too and bottom rail.
- 1g. Secure the brackets using supplied nuts and bolts. Do not tighten fully.
- 1h. Make sure the entire gate assembly is square and tighten all bolts using a 7/16" wrench.



CARE & MAINTENANCE

- Step 1 – Add about half a cup to a cup of white vinegar to a gallon of water.
- Step 2 – Apply to fence and scrubs with a soft bristled scrub brush or sponge.
- Step 3 – Rinse the fence thoroughly with your garden hose.