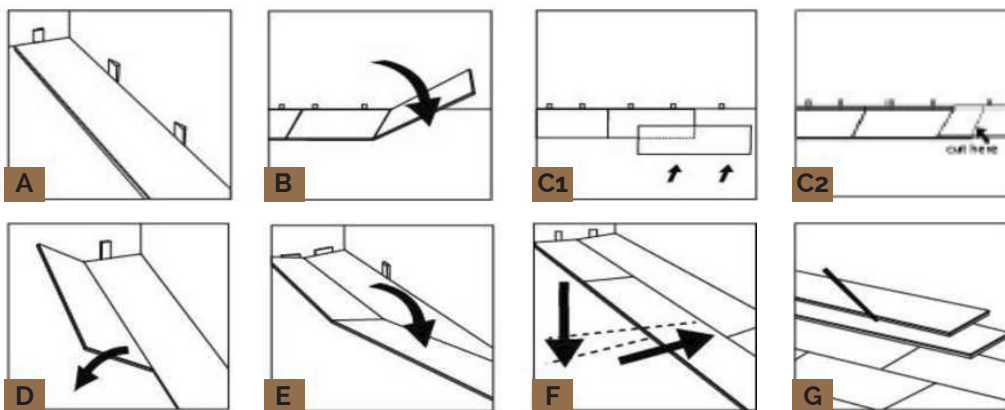


**Please Carefully Read All  
Instructions Before You Begin  
Your Installation.  
Improper Installation  
Will Void The Warranty.**

1. Read enclosed detailed installation instructions before beginning install.
2. A flat subfloor is a must!
3. Proper moisture testing is a must!
4. Proper expansion around all permanent structures is a must!
5. Molding, trim, transition, and finish pieces must not prevent the floor from floating.
6. Failure to follow installation instructions will void warranty.
7. No acclimation is required under proper conditions.



Each installation setting is unique, therefore it is recommended to consult a licensed installer/contractor to verify that the conditions are appropriate for this product.

Inspect the floor for defects prior to and during installation. Do not install any flooring that appears to be defective. Always check flooring planks for defects such as chips and color variations under good light conditions. Check that grooves are free of debris. **Use planks from multiple boxes** during installation to ensure random pattern variation. Installation of planks with visible defects implies acceptance.



**WARNING:** Drilling, sawing, sanding, or machining wood products can expose you to wood dust, a substance known to the state of California to cause cancer. Avoid inhaling wood dust or use a dust mask or other safeguards for personal protection. For more information go to [www.P65Warnings.ca.gov/wood](http://www.P65Warnings.ca.gov/wood)

## NO ACCLIMATION REQUIRED

No acclimation is required under proper conditions. However, if the flooring is exposed to temperatures less than 400 F (50 C) or more than 950 F (350 C) and/or if the flooring is exposed to relative humidity below 35% or above 70%, flooring must be conditioned by spreading them out in unopened cartons, not stacked, in the room where they will be installed, for minimum 12 hours under the recommended temperature and humidity ranges specified in this installation guide.

The area in which the flooring is installed must be climate controlled with the temperature between 65- 78°F (18-25°C) and humidity levels between 35%-70% during installation and for the lifetime after installation.

This product is for indoor use only.

Installation spanning greater than 50 feet in length or width must have a T-molding installed across the width of the room, archway or at the beginning of the hallway to provide proper expansion space. Doorways of less than 4 feet must always have a T-molding or other transition molding regardless of floor length or width.

While this flooring can be installed above, on, or below grade, below grade must not have a sump pump or floor drains.

This product is a floating floor and should NOT be secured to the floor. Do not install fixed objects, such as cabinets, on top of the flooring unless it is fully adhered and do not fasten trim/molding/ transition pieces directly to the floor.

## REQUIRED TOOLS AND SUPPLIES

- Saw
- 1/2" spacers
- Straight edge ruler or T-square
- Tape measure
- Rubber Mallet
- Safety glasses
- Utility knife
- Pencil
- Adhesive Tape
- Dust Mask or Respirator

**If existing baseboard molding is difficult to remove, Quarter Round molding likely will be required to cover the expansion space need between flooring and baseboard.**

## SUITABLE TYPES OF FLOORS AND FLOOR PREPARATION

The sub floor must be **flat, dry, and clean**. Carpet staples or any/all adhesive residue must be removed and floor must be clean to ensure proper installation. All wooden subfloors must be structurally sound and must be installed following the American Plywood Association's (APA) and the manufacturer's recommendations.

**Moisture** in concrete subfloors can create high moisture vapor emission levels, hydrostatic pressure, and high alkalinity levels. This combination is highly corrosive and damaging to flooring, over time. To avoid this, ensure that concrete subfloors are constructed according to the American Concrete Institution's guidelines (ACI's 302.2 Guide). To check current conditions, a RH test using in situ Probes (ASTM F2170) is necessary. If the level of hydrostatic pressure is over 80% RH, or will be above 80% RH during the life of the slab, our warranty requires moisture mitigation, such as the use a moisture barrier, like a 6-mil poly film or **MSI's** underlayment, or you must use **MSI** adhesive designed to support up to 95% RH for the install. There also is calcium chloride testing (ASTM F1869) but the in situ Probe (ASTM F2170) is the preferred test. Lightweight concrete (minimum density of 90 lbs. per cubic foot) is acceptable if installed according to the manufacturer's instructions and primed with **MSI's** MS003 primer.

**Note: New concrete needs to cure for at least 60 days before installing flooring materials.**

To check for flatness, hammer a nail into the center of the floor. Tie a string to the nail and push the knot against the floor. Pull the string tight to the farthest of the room and examine the floor for any high/ lows relative to the string. Subfloors must be flat to 3/16" per 10' (5mm per 3 meters). Any areas in excess of the flatness specification must be sanded down or filled with an appropriate leveler. This product can be installed over most existing floors including wood, non-cushioned vinyl or linoleum, and ceramic/porcelain tile if the existing flooring is intact and properly secured to the subfloor. If installing over ceramic/porcelain tile, grout lines in excess of 1/16"

(0.625) must be filled with a Portland based skim coat/floor leveler according to the manufacturer's guidelines. It is up to the installer to determine if a vapor barrier is required. If required, cover the subfloor surface with a minimum 6 mil (0.15mm) plastic poly sheeting moisture barrier with at least 8" of overlap at the seams.

**Warning: This product should not be installed over carpet. Installation over carpet will void the warranty.** When installed in rooms with direct sunlight, during the peak hours of sunlight, the use of blinds/shades or drapes to avoid prolonged direct sunlight period is recommended.

Excess moisture exposure can damage the flooring and breed mold/mildew growth on subfloor and walls. This is not considered a defect in the flooring.

If considering **Radiant heat**, flooring can be installed over 1/2" (12mm) embedded radiant heat. Radiant heat systems must have a minimum of 1/2" (12mm) separation from the product. Maximum operating temperature should never exceed 85°F (30°C). Use of an in-floor temperature sensor is recommended to avoid overheating. Before installing over new radiant heat systems, operate the system at maximum capacity to force any residual moisture. The maximum moisture content should be 2.5% (CM method). Before starting the installation, turn the heat off for 24 hours before, during, and 24 hours after installation. During installation, make sure the temperature in the room of installation is between 60-80°F (15-25°C). After installation, the system can be turned on and the temperature can be raised gradually (5°F per hour) until returning to normal operating conditions.

**Warning: Electric heating mats that are not embedded into the subfloor are not recommended for use underneath the flooring. Using electric heating mats that are not embedded and applied directly underneath the flooring will void the warranty.**

## INSTALLATION

- Starting in the left hand corner, place the first plank with its' triStarting in the left hand corner, place the first plank 1/2" (10mm) from the wall. Use spacers along all walls to maintain an expansion gap of 1/2" (10mm) between the walls and the flooring (Figure A).
- Attach the ends of the 1st plank and the second plank by lifting the 2nd plank and inserting the tongue on the short side into the groove of the first plank and lowering it into place. Line up edges and corners carefully (Figure B).
- Continue along the wall until you reach the last full plank, connecting each plank in manner described above.

To fit the last plank, turn plank over (face down). Place the plank in the corner so the tongue on the short end touches the 1/2" spacer from the adjacent wall. Measure overlap between the installed plank and the last plank (Figure C1 & C2).

Use saw to cut plank to size. If cutting with a jig saw, the decorative surface should be turned down. If cutting with a hand saw, the decorative surface should be face up.

**Note: The end pieces must be at least 12". This may require cutting a plank to start a row depending on the size of the room.**

- Begin the next row with the cut piece from the previous row, creating the necessary stagger. This piece should be a minimum of 12" (30cm) long and the joint offset from the previous row should be at least 12" (30cm) apart. To attach, tilt the plank you are installing slightly upwards (about 15-25°), insert its tongue into the previous row's groove, and lower it into place. The plank will click into place with light pressure (Figure D).
- Install the second plank in the second row by inserting the short end tongue into the previously installed plank's groove. Align the plank so that the long side tongue tip is positioned just over the groove lip of the plank in the first row (Figure E). Working from the end seam, at a low angle, insert the long tongue into the groove of the adjoining plank. **Very little force is required** to fit the tongue into the groove. You should be able to feel the tongue lock into the groove (Figure F). Continue locking each piece into place, short side first and then long side.
- To fit the last row, lay a plank on top of the previous row. With the plank against the wall, mark a line down the length of the plank and cut the planks accordingly to obtain the required width (Figure G). Insert this cut board against the wall. The last row should be at least 2" (50mm) wide. The spacers can then be removed.

## INSTALLATION CONTINUED

- Door Frames and heating vents also require expansion room. Cut the planks to the correct length. Place the cut plank next to its actual position, use a ruler to measure the areas to be cut out and mark them. Cut out the marked points allowing the correct expansion distance on each side. T-molding is suggested in all doorways.
- To trim doorframes, turn a panel upside down to use as a height guide. Using a handsaw, cut door frames to the necessary height so that the planks slide easily under them.
- To make holes for pipes, measure the diameter of the pipe and drill a hole that is 7/8" (20mm) larger into the plank. Saw the plank into two pieces perpendicular to the length and bisecting the previously drilled hole. Then lay the pieces in place around the pipe.
- To finish the perimeter of the room, install quarter round molding using finishing nails. Nail quarter round directly into the baseboard not the flooring.
- Do not install over multiple layers of underlayment.

## MAINTENANCE

Dust-mop, broom, or vacuum on the correct hard surface setting for daily maintenance. When necessary, clean with a MOIST cloth or mop and water only making sure the mop or cloth is thoroughly wrung out. DO NOT pour water or any liquid directly on the floor or use an excessively wet mop that will puddle or leave excessive moisture on the planks. Dry immediately.

**NEVER** use detergents, soaps, or chemicals to clean the floor. Instead, use a neutral PH cleaner.

**NEVER** use floor polish or floor cleaning wax, oils, soaps, etc. These products can damage and/or leave a film on the flooring. This is not a flooring defect.

**NEVER** use rotating beater bars, scrubbers, jet mops, buffers, etc. Liquids and spills must be wiped dry immediately. Do not use steam mops.

## TIPS

- Always use felt tip protectors on all furniture legs/feet, and regularly clean any gathered dirt/grit from the pads
- Walk off mats should be placed at all exterior entrances to protect the Flooring from soil, grit, deicers, asphalt sealers, and other contaminants capable of damaging the Flooring. Suitable walk off mats should contain both soft and firm fibers to facilitate removal of wet or solid contaminants from shoe soles. An extra set of walk off mats should be available for each entrance so walk off mats can be replaced and cleaned weekly during routine maintenance or more often depending upon site and weather conditions.

**Warning:** Never use vinyl/latex/rubber backed protective mats

- Area rugs are recommended
- Keep pet nails trimmed
- Sharp shoe-heels (e.g. high-heels) may dent the floors
- Never slide furniture across a floor without pads
- Keep floors clean
- For wet areas such as bathrooms, caulk/completely seal the perimeter of the floor with a flexible silicon caulk

## WARRANTIES

**Joint Integrity:** During the period of the warranty the locking system will not fail when properly installed and maintained according to the manufacturer's instructions. Installed flooring must remain climate controlled with the temperature of 55- 95°F (13-35°C) for the life of the produce, with the herein listed exceptions.

**Manufacturing Defect:** During the period of the warranty, this product will be free from manufacturing defects.

**Wear Resistance:** During the period of the warranty, this product's wear layer will not wear through to the decorative layer under normal use. Excessive wear due to improper maintenance or care is not a wear layer or product defect.

## WHAT IS NOT COVERED BY THIS WARRANTY (Item list is not exhaustive)

- Improper Installation: Material that is not installed in accordance with the Installation Instructions is not a manufacturing related defect. Installer workmanship is not warranted.
- Labor cost to repair or replace material installed with visible defects/imperfections.
- Improper maintenance, resulting in gloss level loss.
- Damage resulting from use of strong detergents, chemicals, paints, dyes, improper mats, fertilizers, or other similar materials.
- Damage caused by rolling loads, including but not limited to chairs, appliances, or other objects are not covered by the warranty.
- Damage caused by moving appliances or heavy furniture without protecting the floor. (Always protect flooring by using protective covering when moving heavy objects.).
- Damage or scratches resulting from accidents, casualty events, abuse or improper usage (including damage from pet claws or teeth, urine, etc.). Accidents, abuse, and improper usage are defined as, but are not limited to damage caused by: casters on furniture, rotating beater bars on vacuum cleaners, burns, cuts, impact from heavy and sharp objects – with the Prescott exception, narrow or spike heels, cleats, etc., as well as, damage resulting from unprotected furniture legs.

## WHAT IS NOT COVERED BY THIS WARRANTY (Item list is not exhaustive)

- Chairs, sofas, or furniture with castors must be fitted with soft rubber wheels and have an adequate protective mat or protective castor cups to prevent rolling load damage.
- Damage caused by leaks from appliances or plumbing.
- Construction damage after installation.
- Installation-related errors or damage including improper conditioning of jobsite and flooring materials, when necessary, and/or poor subfloor performance or failure.
- Fading, discoloration, or other damage due to excessive temperatures or sunlight. Radiant heat must not exceed 85°F (29°C) and be approved by the manufacturer for the use of their product with resilient vinyl flooring applications.
- Problems or damage due to excessive moisture or hydrostatic pressure from the sub-floor.
- Discoloration caused by use of vinyl, latex, or rubber-backed floor mats. Note: some synthetic backed carpets contain latex in the manufacturing process that may discolor vinyl. Always use mats marked as "non-staining".
- Discoloration caused by rubber pads, rubber wheels, rubber tires, rubber rollers, automotive tires, etc.
- Flooring installed on stair is excluded from warranty coverage.
- Installation of residential product in a commercial environment.

If the product fails to perform as stated in the warranty, **A&A** reserves the right to have the product inspected by a certified inspector. Should product be determined to be defective, **A&A** reserves the right to either repair or replace the defective area with the same color, design, and grade product, if available. If product is unavailable or discontinued, **A&A** reserves the right to select and supply similar material.

- If repairs or replacement of a section is deemed necessary, all items must be cleared from the affected area subsequent to the original installation. The cost associated with the removal of those items will not be credited or reimbursed.
- Product costs will be covered for the length of the warranty.
- Labor costs will not be covered.
- Warranty coverage for the replacement floor is limited to the remaining portion of the original warranty.
- Any additional claims for loss of profit or incidental losses due to defective product will not be considered. Some examples of incidental damages are: replacement of subfloors or underlayment, trim moldings, disconnecting / reconnecting appliances, moving of furniture or any other losses deemed incidental by **A&A**.

Failure to follow these procedures may result in voiding some or all of the warranty. This limited warranty is non-transferable and extends only to the original end user. **Please note: Some jurisdictions do not allow exclusion or limitation of incidental or consequential damages or limitations on how long an implied warranty lasts, so the above limitation and exclusion may not apply to you.**

This warranty gives you specific right and you may also have other right, which vary from state to state.