

kobiworks



NIRVANA

SWING DOOR & PANEL INSTALLTION



Questions?

Customer Support: **+1 909-276-7014**
Operation Hours: **8am-5pm Mon-Fri**
PST

Complicated Stuff?

cs@kobiworks.com



General Information



Threshold for the **NIRVANA** model has to be at least **1"** wide for the entire shower to fit.

Out Of Plumb tolerance is 1/4" which can be silicone and adjusted

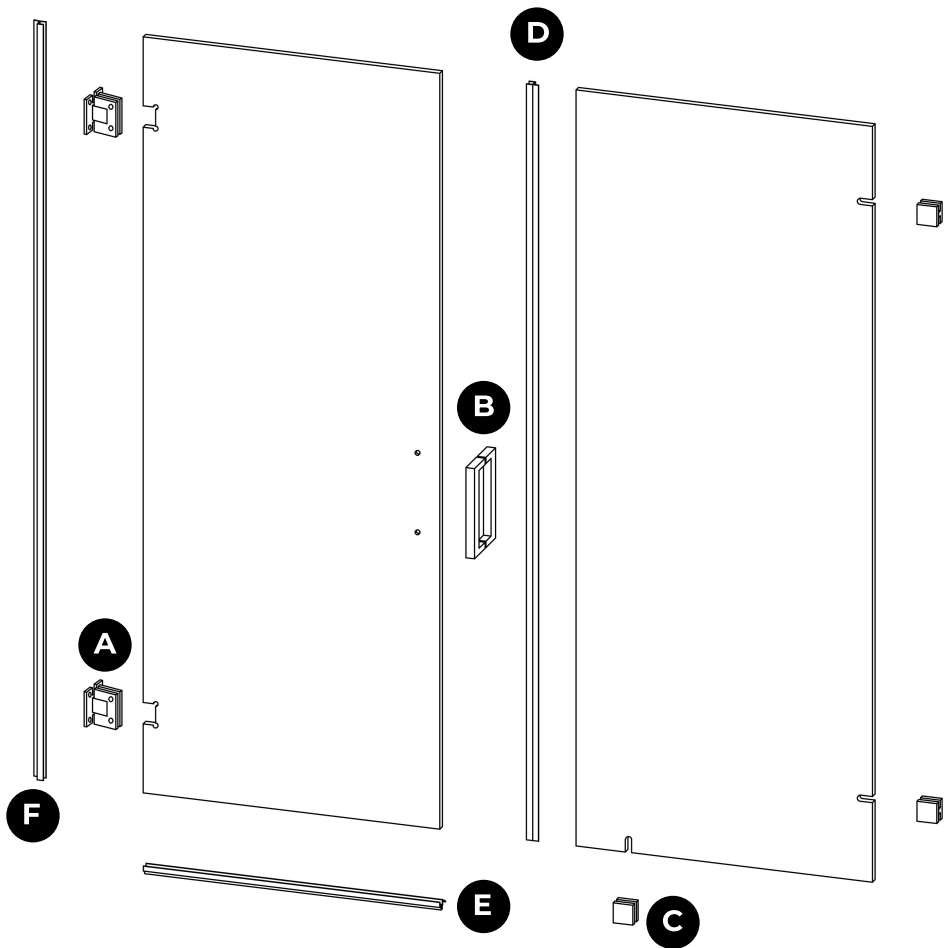


Note:

- Installation of this shower door requires the threshold to be drilled, contact the manufacturer of the base in regards to any questions related drilling holes into their products.
- Recommend using waterproof, mildew-resistant silicone caulk.
- Recommend caulking each drilled holes to waterproof further.
- Professional Installation Recommended.
- Minimum two installers required.



Diagram



- A. Hinge**
- B. Handle**
- C. Clip**
- D. Stop Seal**
- E. Bottom Drip**
- F. Hinge Seal**

Item amount may vary depending on the model and item you're buying, if you're missing any items please contact ASAP.

INSTALLATION NOTES

For starters, we always recommend installing the fixed pieces first, then the door for the last, but also taking in note the doors width and space being left open.

Standard Information:

- **3/8" gap on the bottom of the door**
- **1/4" gap for the hinges behind the door**
- **1/4" - 3/8" gap between the door and panel or wall**

Be extra careful with the edges of the glass, notches and applying substantial pressure towards an edge will instantly pop the glass.



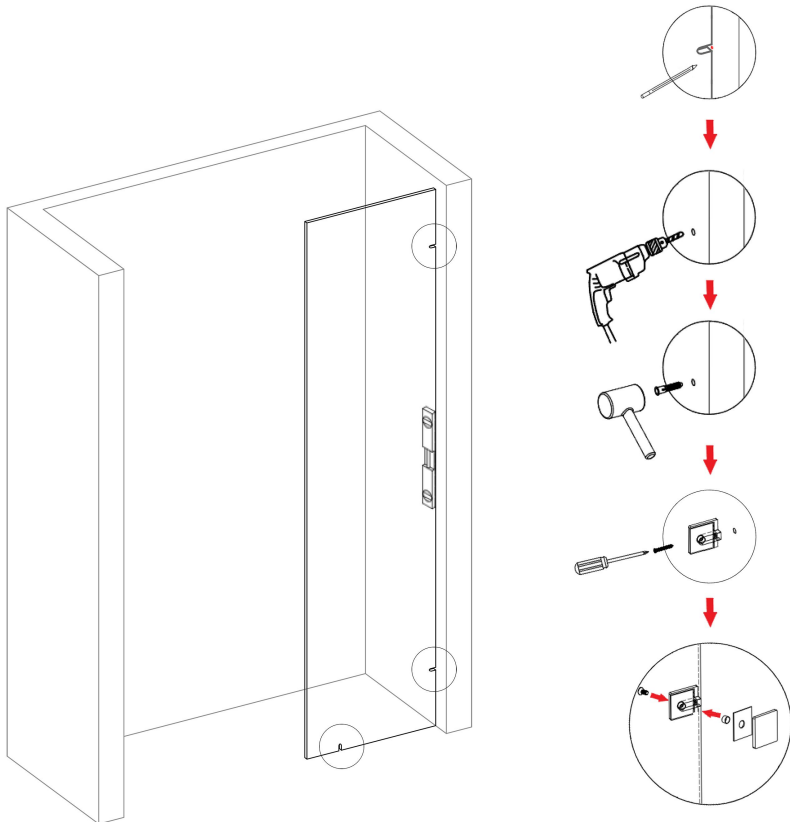
We have an installation video on Youtube as well.

INSTALLATION - Return Panel

This “Return Panel” can be a definition for the Panel for the Inline, or the Panel for the Corner Enclosure.

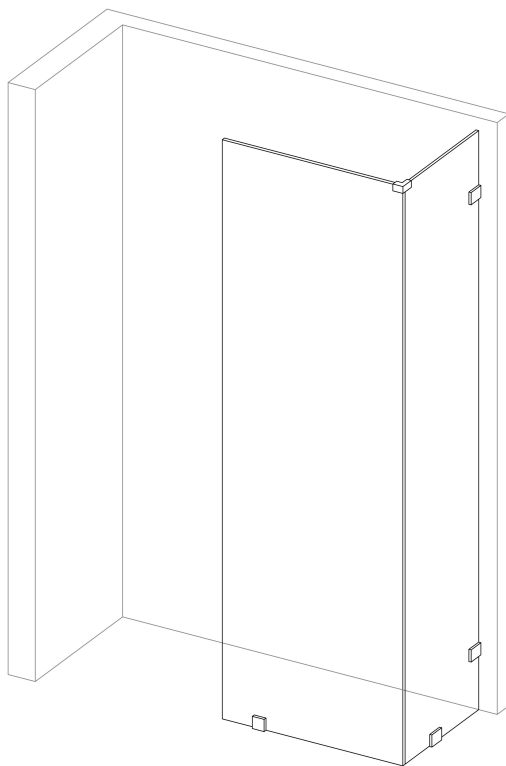
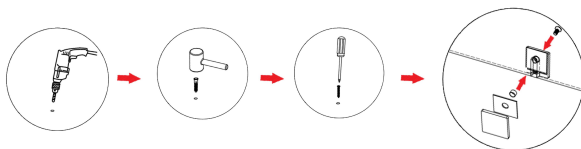
Follow the steps as needed as they are the same process.

- Place the glass on the location being installed (shim the edges hitting hard surfaces) and with the provided clamps mark the location to drill the hole.
 - Make sure the glass is straight and flush.
- Remove the glass and drill the holes and secure the clamps.
- Place the glass back onto the location and the clamps should coincide the pre-cut notches.
- Secure the glass by tightening the other side of the clamps and



INSTALLATION - Side Panel

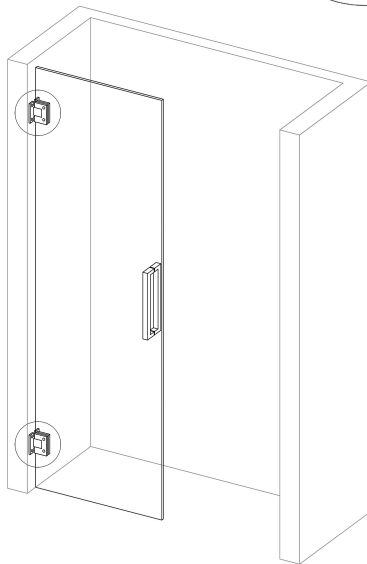
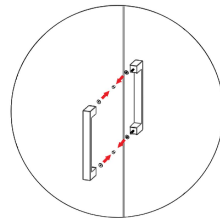
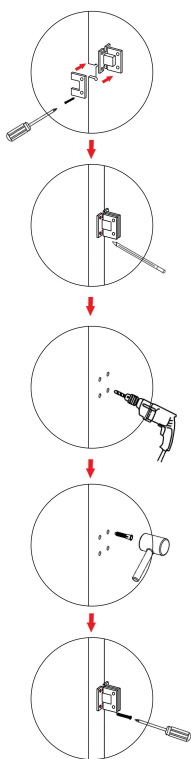
- Place the glass on the location being installed (shim the edges hitting hard surfaces) and with the provided clamps mark the location to drill the hole.
 - Make sure the glass is straight and flush.
- Remove the glass and drill the holes and secure the clamps.
- Place the glass back onto the location and the clamps should coincide the pre-cut notches.
- Attach the top corner sleeve between the glasses.
- Secure the glass by tightening the other side of the clamps and silicone around the glass edges hitting the wall and floor.



INSTALLATION - Door

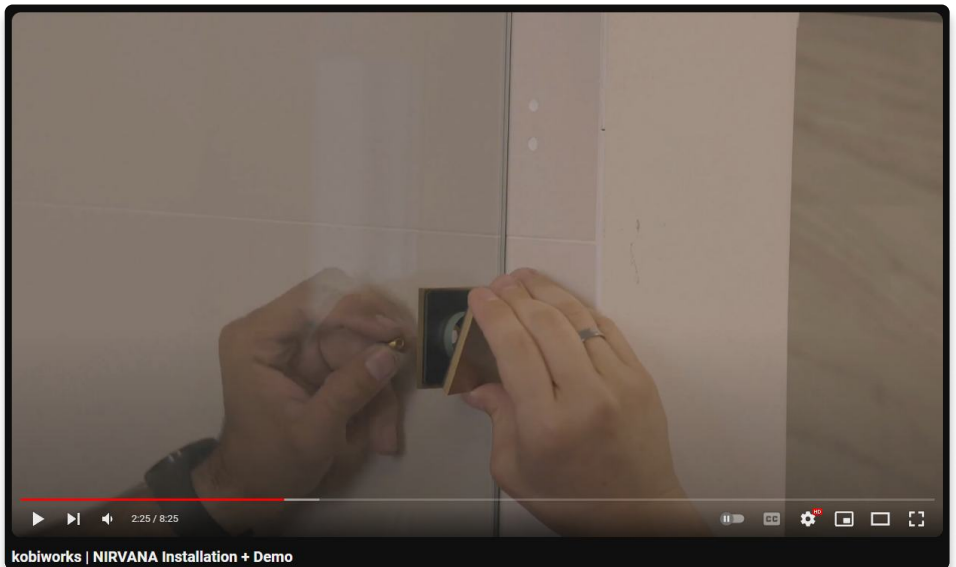
It is recommended to install the door last, make sure to leave the door size + **1/2"-3/4" opening**, for the door to fit in perfectly, if the dimensions does not add up or does not give you that. Please contact a support agent ASAP for a solution.

- Mount the hinges onto the glass door and secure it, make sure to adjust as needed.
- Place the glass on top of **3/8" tall shims** or something similar, it is needed so the bottom drip can be placed and the door to open correctly.
- After positioning the glass and making sure it's flush, mark the holes of of where the hinges' holes will be drilled.
- Remove the glass door and with the marked holes, drill holes and then place anchors.
- Afterwards, remove the hinges from the glass and secure them firmly onto the wall.
- Then mount the glass onto the hinges and the handle then you're golden!





Watch out! We have an installation video on YouTube too!



Additional Resources

Website: <https://kobiworks.com>

Address: 1265 S. Johnson Dr, City Of Industry, CA 91745



Questions?

Customer Support: **+1 909-276-7014**

Operation Hours: **8am-5pm Mon-Fri**
PST

Complicated Stuff?

cs@kobiworks.com



