



Southerk™
70" x 24" linen tower
K-33548-ASB

Features

- Two full-extension 12¾" (325 mm) drawers with soft-close side-mount slides.
- 18" (457 mm) cabinet interior with two shelves provides ample storage space.
- Finish-matched cabinet interior.
- Customize your storage with optional accessories such as floor liners, drawer organizers, and perfectly sized containers (sold separately).
- Coordinates with K-33550 upgraded hardware finishes (sold separately).

Material

- Solid wood and moisture-resistant MDF.
- Painted exterior.

Installation

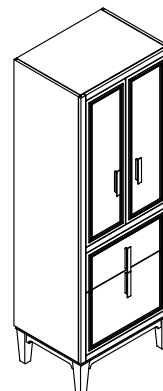
- Easy installation – no special tools required.

Recommended Products/Accessories

K-33585
K-33586
K-33587
K-33588
K-27933
K-29747
K-33543-ASB 24" bathroom vanity set
K-33544-ASB 30" bathroom vanity set
K-33545-ASB 36" bathroom vanity set
K-33546-ASB 48" bathroom vanity set
K-33547-ASB 60" bathroom vanity set
K-33549-ASB 28" x 24" wall cabinet
K-33550 5½" cabinet pull

Included Components

Additional Components:
Wall attachment kit



Codes/Standards

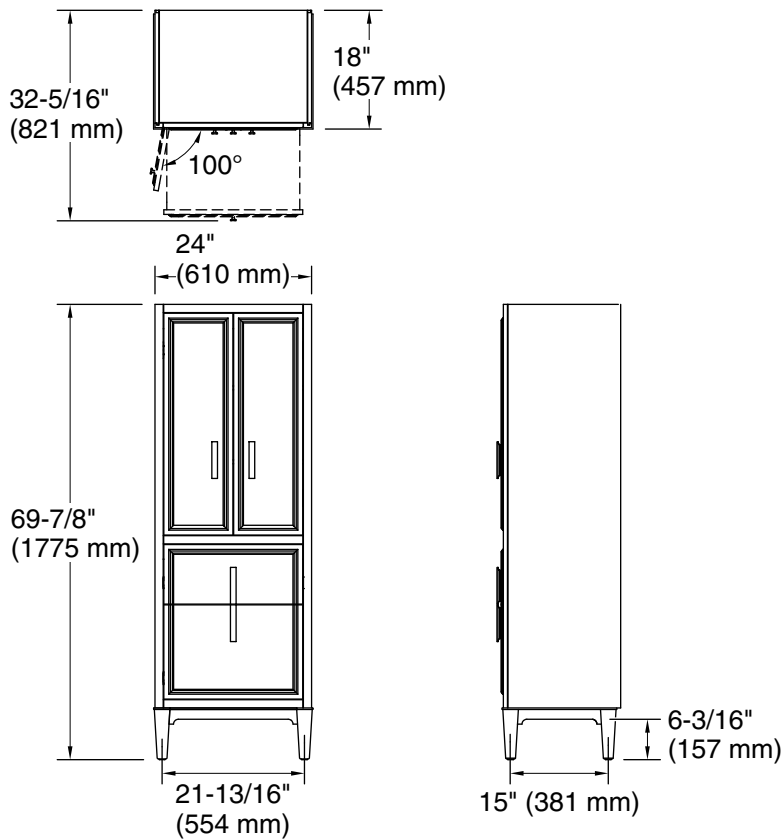
EPA TSCA Title VI
CARB P2

**KOHLER® One-Year Limited
Warranty**

See website for detailed warranty information.



Southerk™
70" x 24" linen tower
K-33548-ASB



Technical Information

All product dimensions are nominal.

Notes

Install this product according to the installation instructions.