



MUSTEE

Preferred by the "Pros"

28F BIG TUB™ UTILATUB® Utility Tub

SEE PAGE 2 FOR A LIST OF ACCESSORIES!



One-piece molded tub of impact-resistant polypropylene

Heavy gauge steel legs, with adjustable levelers

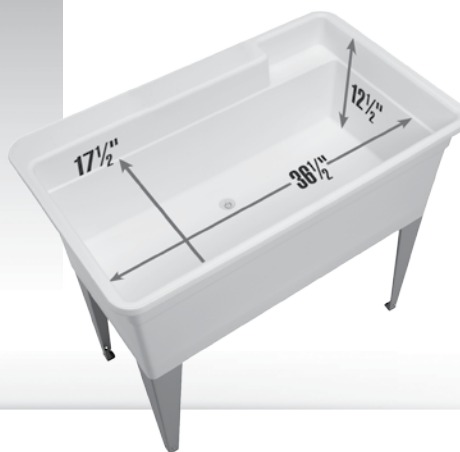
Large, self-draining back shelf directs water run-off into the tub

Mold and mildew-resistant components

Easy to assemble and install

Color-fast, stain-resistant white finish

Drain stopper



Recessed 9" wide x 3" deep x 4" tall utility shelf

Specifications

Code Accepted

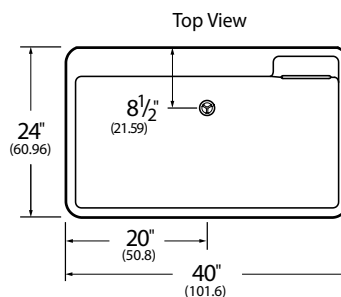
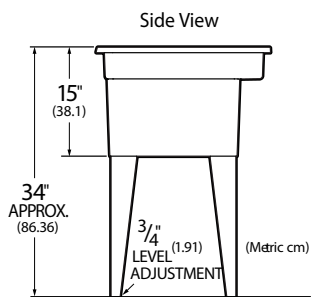
BIGTUB™ UTILATUB® meets or exceeds applicable performance requirements as listed:

International Association of Plumbing and Mechanical Officials (IAPMO)® Listed US/CANADA

American National Standards Institute (ANSI)- Specification Z124.6



| Colors & Models: | Model | Mounting | Outside H x W x D | Inside H x W x D | UPC |
|------------------|-------|----------|-------------------|-----------------------------|-----------------|
| White | 28F | Floor | 34" x 40" x 24" | 12-1/2" x 36-1/2" x 17-1/2" | 6 71031 00499 4 |



General: Furnish and install as shown on plans, BIGTUB™ UTILATUB® Utility Tub Model 28F, as manufactured by E.L. Mustee & Sons, Inc. Tub shall be one-piece molded polypropylene with matched metal molds and includes: Steel legs with adjustable levelers; and 1 1/2" Molded-in drain and Drain stopper. 36-Gallon capacity. Shall meet ANSI Specification Z 124.6 Color: White. Weight: 32 lbs.



MUSTEE

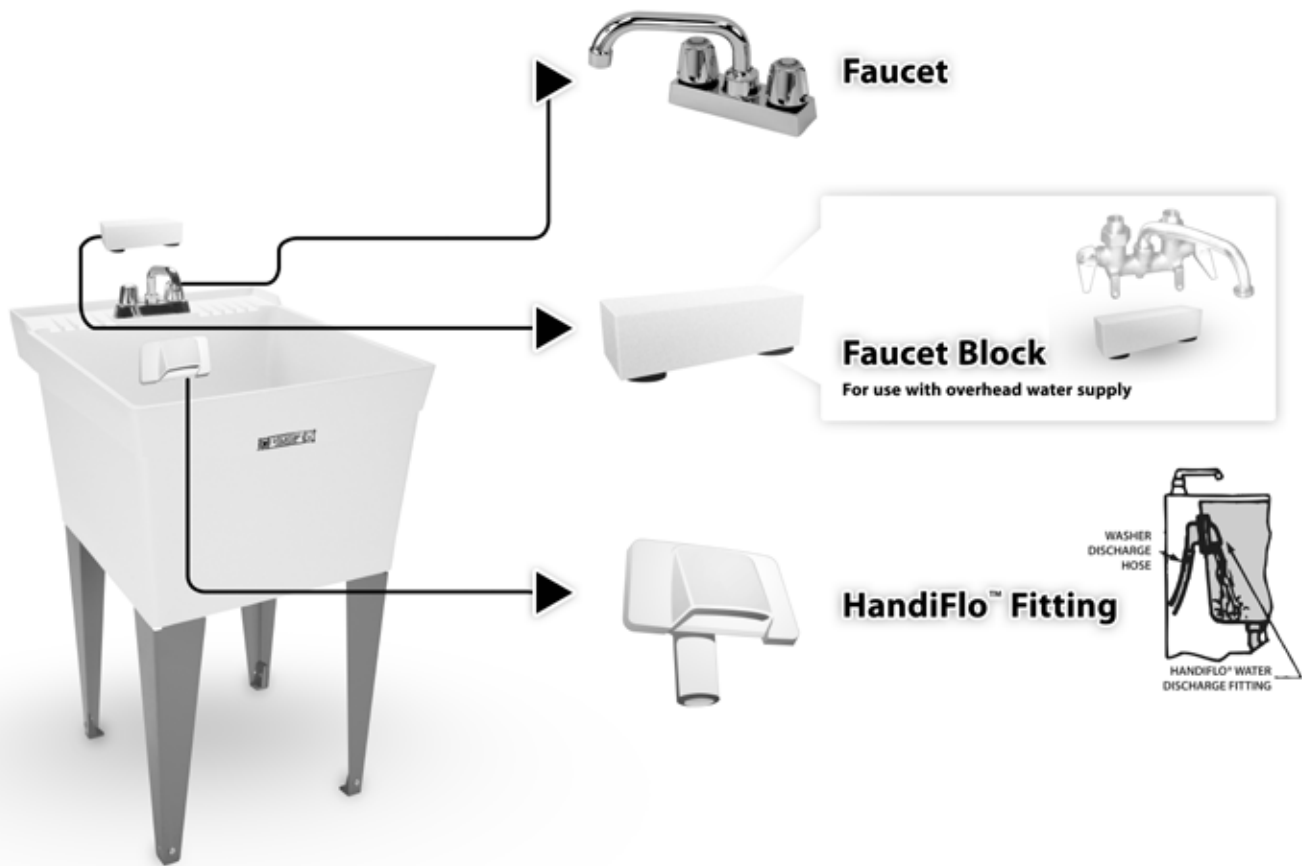
E.L. Mustee & Sons, Inc. • 5431 West 164th Street • Brook Park, OH 44142 • Phone: 216.267.3100 • Fax: 216.267.9997
E-mail: info@mustee.com • Web: www.mustee.com • Proudly made in the USA

Notice: Our continuous commitment to product improvement may result in changes to product specifications without notice.
Patents pending. Made and Printed in U.S.A.



MUSTEE
Preferred by the "Pros"

28F BIG TUB™ UTILATUB®
Utility Tub Accessories

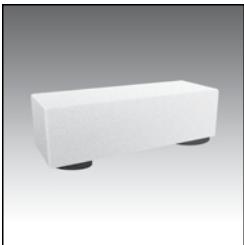


Faucet



| Model No. | UPC |
|--|-----------------|
| 93.600 | 6 71031 00232 7 |
| Chrome finish, 4" center set brass faucet. 6" swing spout with aerator, level handles, replaceable seats and stems. Aerator or hose end. | |

Faucet Block



| Model No. | UPC |
|---|-----------------|
| 20.600 | 6 71031 00031 6 |
| Used when water supply lines are above the tub. Mounts to tub shelf when using a clamp-on faucet. | |

HandiFlo™ Fitting



| Model No. | UPC |
|--|-----------------|
| 94.700 | 6 71031 00287 7 |
| Dispenses water from washing machine discharge hose into laundry tub. Eliminates draping washer machine hose over back/side wall of laundry tub and conceals discharge hose. Mounts to back or side wall of laundry tub, includes mounting hardware. | |



MUSTEE

E.L. Mustee & Sons, Inc. • 5431 West 164th Street • Brook Park, OH 44142 • Phone: 216.267.3100 • Fax: 216.267.9997
E-mail: info@mustee.com • Web: www.mustee.com • Proudly made in the USA

Notice: Our continuous commitment to product improvement may result in changes to product specifications without notice.
Patents pending. Made and Printed in U.S.A.