

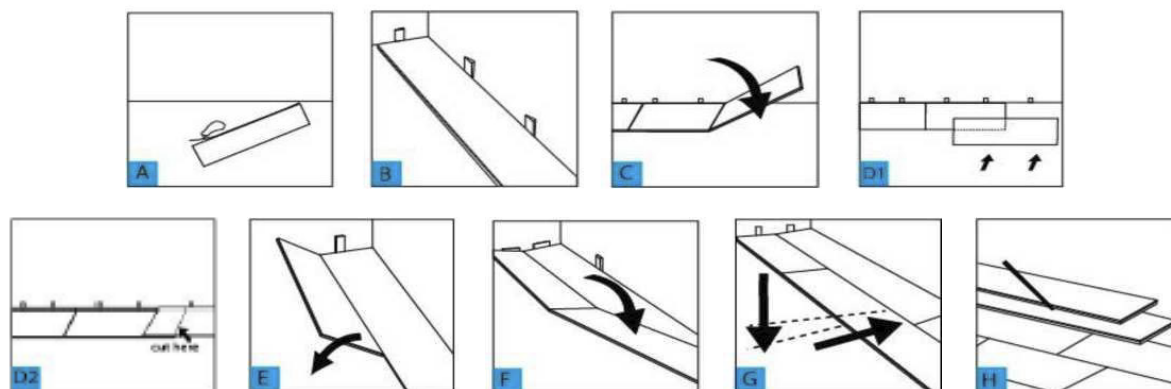


## LAMINATE FLOORING INSTALLATION INSTRUCTIONS

Making Dream Surfaces Attainable

**Please Carefully Read All  
Instructions Before You Begin  
Your Installation.  
Improper Installation  
Will Void The Warranty.**

1. Read enclosed detailed installation instructions before beginning install.
2. A flat subfloor is a must!
3. Proper moisture testing is a must!
4. Proper expansion around all permanent structures is a must!
5. Molding, trim, transition, and finish pieces must not prevent the floor from floating.
6. Failure to follow installation instructions will void warranty.
7. No acclimation is required under proper conditions.



Always check flooring planks for defects such as chips and color variations under good light conditions. Check that groove are free of debris. **Use planks from multiple boxes** during installation to insure random pattern variation.

### NO ACCLIMATION REQUIRED

No acclimation is required under proper conditions. However, if flooring is exposed to temperatures less than 40° F (5° C) or more than 95° F (35° C) and/or if the flooring is exposed to relative humidity below 35% or above 70%, flooring must be conditioned by spreading them out in unopened cartons, not stacked, in the room where they will be installed, for minimum 12 hours under the recommended temperature and humidity ranges specified in this installation guide.

The area in which the flooring is installed must remain \*climate controlled with the temperature between 65-85°F (18-25°C) for the life of the product.

\* MSI's SPC flooring may be installed in a vacation home, three-seasons room, etc., with a temperature between 55-95° (13-35°C) at least 48-hours before and during the installation, even if temporary

**temperatures must be taken. Thereafter, the temperature cannot fall to below 40°F (5°C) or higher than 95°F (35°C) and RH must maintain between 35-70%. In these installations, you must use transition moldings at doorways and in any span greater than 40' in any direction, as is true in light commercial and radiant heat installations.**

This product is a floating floor and should NOT be \*secured to the floor. Do not install fixed objects, such as cabinets, on top of the flooring unless it is fully adhered and do not fasten trim/molding/transition pieces directly to the floor.

**\* You may adhere MSI's SPC flooring in light commercial and commercial installations using MSI's MS007 adhesive, following directions on the pail.**

### REQUIRED TOOLS AND SUPPLIES

- Circular Saw
- 1/4" or 1/2" spacers
- Straight edge ruler or T-square
- Tape measure
- Safety glasses
- Utility knife
- Pencil

If existing baseboard molding is difficult to remove, Quarter Round molding likely will be required to cover the expansion space need between flooring and baseboard.

### SUITABLE TYPES OF FLOORS AND FLOOR PREPARATION

The sub floor must be flat, dry, and clean. Carpet staples or any/all adhesive residue must be removed and floor must be clean to ensure proper installation. All wooden subfloors must be structurally sound and must be installed following the American Plywood Association's (APA) and the manufacturer's recommendations. **If it is uncertain that any old adhesive residue may cause issues, use MSI's MS005 Adhesive Encapsulator.**

To check for flatness, hammer a nail into the center of the floor. Tie a string to the nail and push the knot against the floor. Pull the string tight to the farthest of the room and examine the floor for any high/lows relative to the string. Subfloors must be flat to 1/8" per 6' (3mm per 0.92 meter). Any areas in excess of the flatness specification must be sanded down or filled with an appropriate leveler.