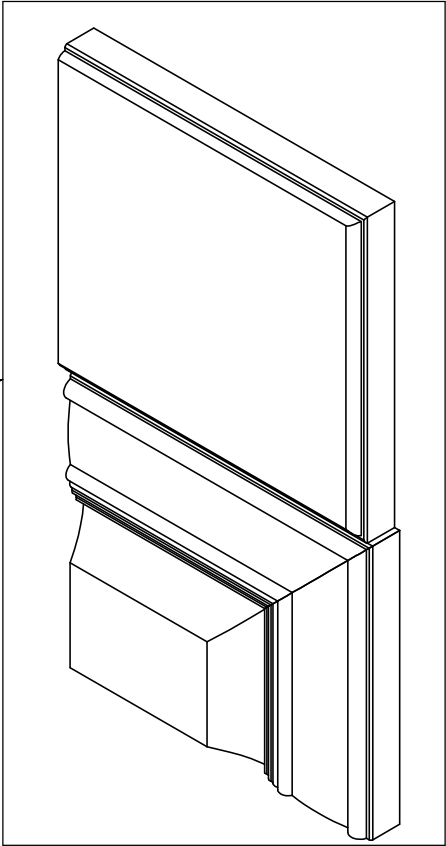
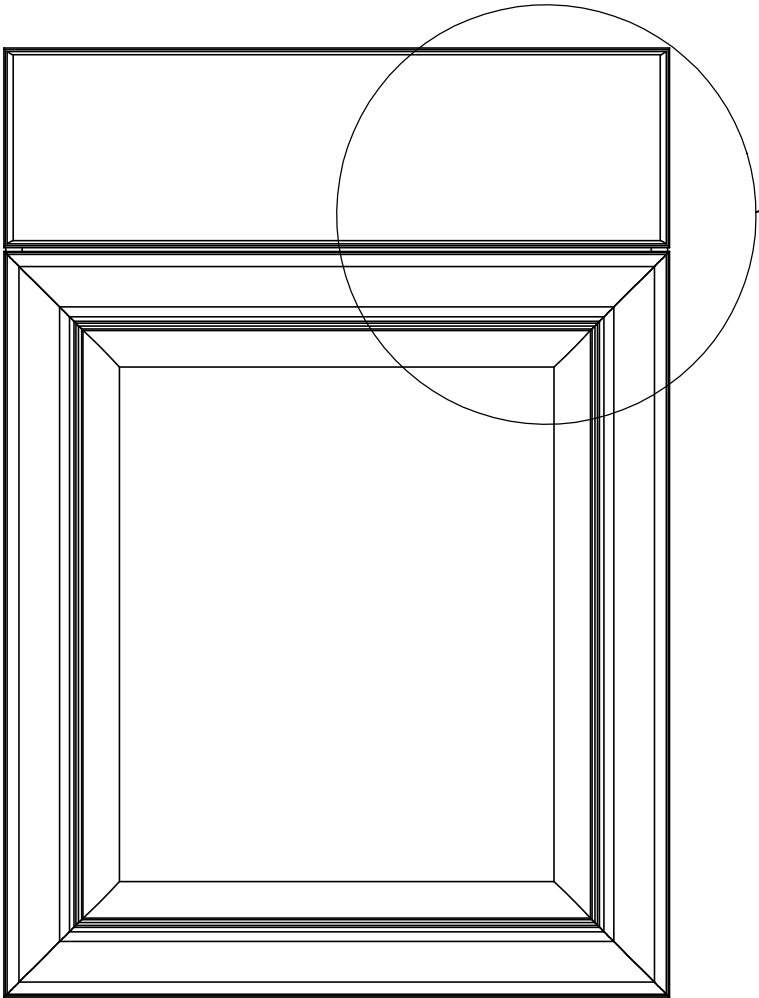


Item ID	Front Thickness [in] mm	Door Thickness [in] mm
BT2135B-BT	[.75] 19	[.75] 19

This profile
belongs to
BT2135B-BT

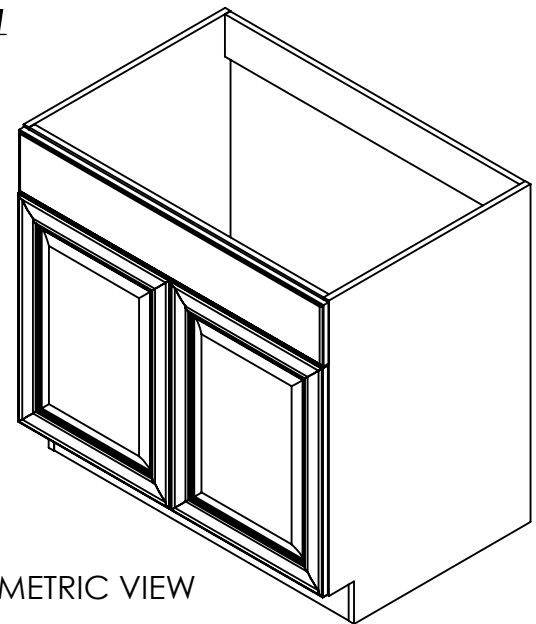
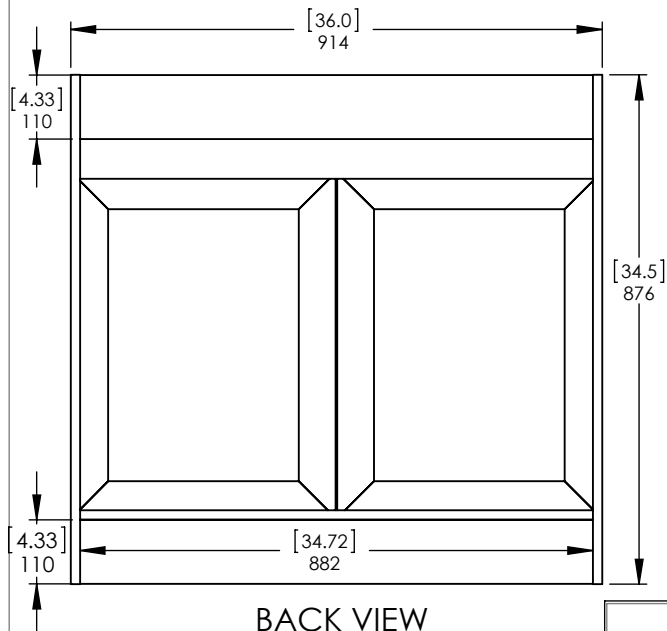
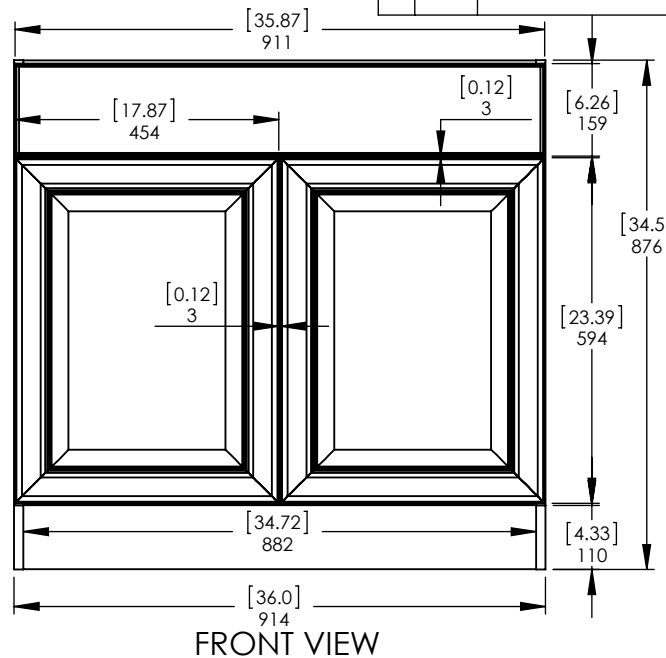
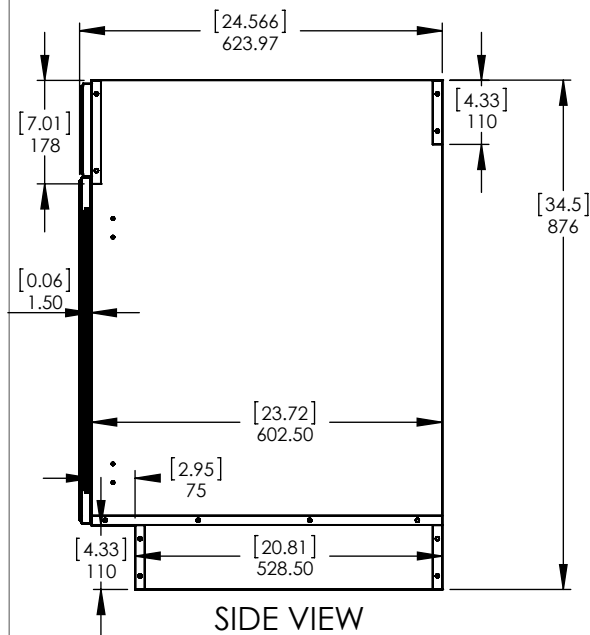



Detailed View

Profile: Benton Butterscotch		
PROPRIETARY AND CONFIDENTIAL THE INFORMATION CONTAINED IN THIS DRAWING IS THE SOLE PROPERTY OF WOODCRAFTERS. ANY REPRODUCTION IN PART OR AS A WHOLE WITHOUT THE WRITTEN PERMISSION OF WOODCRAFTERS IS PROHIBITED.	UNLESS OTHERWISE SPECIFIED DIMENSIONS ARE IN MM AND [INCHES] TOLERANCES ARE +.039[1]-.039[1] SCALE:1:2	

Item ID	Description
BT3635S-BT	Kitchens - Benton Sink Base Cabinet in Butterscotch 36in W x 24.625 D x 34.5 H

Rev	ECO #	Description	REV'D BY DATE	CHK'D BY DATE	APRV'D BY DATE
0		New Release	KISM 9/30/16	KISM 9/30/16	KISM 9/30/16
1	1773	Change of position on back lower cleat (881mm)	RR 8/29/17	RR 8/29/17	RR 8/29/17



PROPRIETARY AND CONFIDENTIAL THE INFORMATION CONTAINED IN THIS DRAWING IS THE SOLE PROPERTY OF WOODCRAFTERS. ANY REPRODUCTION IN PART OR AS A WHOLE WITHOUT THE WRITTEN PERMISSION OF WOODCRAFTERS IS PROHIBITED.		UNLESS OTHERWISE SPECIFIED DIMENSIONS ARE IN MM. AND [INCHES] TOLERANCES ARE + 0.039 [1] - 0.039 [1] SCALE:1:13		DRAWN Kadir S.	NAME Kadir S.	DATE 10/3/16	 SIZE DWG. NO. A Base_Sink_Cabinet_36in	SHEET 1 OF 1 REV: 1
CHECKED Kadir S.		ENG APPR. V. Sanchez				10/3/16		