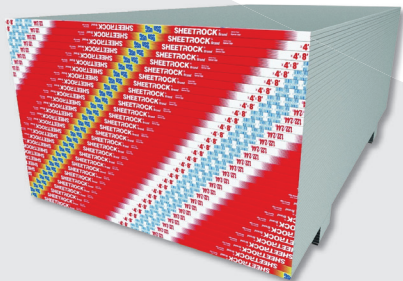


USG SHEETROCK® BRAND GYPSUM PANELS



DESCRIPTION

Quality 1/4 in., 3/8 in. and 1/2 in. wall and ceiling panels for interior applications

- Quick installation and decoration
- Resistant to cracking and warping
- Dry construction
- Score and snap easily
- Meet or exceed ASTM C1396, *Standard Specification for Gypsum Board*
- Achieved GREENGUARD Gold Certification and qualifies as a low VOC emitting material (meets CA 01350)

INTENDED FOR

Available in 1/4 in., 3/8 in. and 1/2 in. thicknesses, USG Sheetrock® Brand Gypsum Panels are manufactured with a core comprised of fire-resistant gypsum encased in 100% recycled face and back papers. The natural finish face paper is folded around the long edges to protect the core and the ends are cut square and even. The long edges of the panels are tapered, allowing joints to be reinforced and concealed with USG Sheetrock® Brand joint treatment systems.

- Non-fire-rated single-layer wall and ceiling applications
- New residential, commercial, or repair and remodel construction
- Wood or steel framing
- 1/4 in. panels are recommended as a base layer for improving sound control in double-layer steel- and wood-stud partitions, and for use over old wall and ceiling surfaces with short radii
- 3/8 in. panels are recommended in double-wall systems over wood framing, and in repair and remodeling
- 1/2 in. panels are recommended for single-layer applications in new residential construction

LIMITATIONS

1. Avoid exposure to sustained temperatures exceeding 125 °F (52 °C).
2. Avoid exposure to excessive, repetitive or continuous moisture before, during and after installation. Eliminate sources of moisture immediately.
3. Non-load-bearing.
4. Must be stored off the ground and under cover in accordance with Gypsum Association's *Handling and Storage of Gypsum Panel Products* (GA-801-07). Sufficient risers must be used to support the entire length of the gypsum board to prevent sagging.

INTERIOR INSTALLATION, FINISHING AND DECORATING

INSTALLATION

Maximum Frame Spacing Drywall Construction

Direct Application	Panel Thickness ¹	Location	Application Method ²	Maximum Frame Spacing OC
Single-layer	3/8 in. (9.5 mm)	Ceilings ³	Perpendicular ⁴	16 in. (406 mm)
		Sidewalls	Perpendicular or parallel	16 in. (406 mm)
	1/2 in. (12.7 mm)	Ceilings	Perpendicular ⁵	24 in. (610 mm)
			Parallel ⁴	16 in. (406 mm)
		Sidewalls	Perpendicular or parallel	24 in. (610 mm)
			Parallel ⁴	16 in. (406 mm)
Double-layer	1/4 in. (6.4 mm)	Ceilings	Perpendicular	16 in. (406 mm)
		Sidewalls	Perpendicular or parallel	16 in. (406 mm)
	3/8 in. (9.5 mm)	Ceilings ⁶	Perpendicular	16 in. (406 mm)
		Sidewalls	Perpendicular or parallel	24 in. (610 mm) ⁷
	1/2 in. (12.7 mm)	Ceilings	Perpendicular or parallel	24 in. (610 mm) ⁷
		Sidewalls	Perpendicular	24 in. (610 mm) ⁷

INTERIOR INSTALLATION, FINISHING AND DECORATING CONT.

FINISHING AND DECORATING

PRODUCT INFORMATION

See usg.com for the most up-to-date product information.

GREENGUARD Certified products are certified to GREENGUARD standards for low chemical emissions into indoor air during product usage. For more information, visit ul.com/gg.

CAUTION

Dust may cause irritation to eyes, skin, nose, throat and upper respiratory tract. Cut and trim with a utility knife or hand saw to minimize dust levels. Power tools must be equipped with a dust collection system. Wear eye, skin and respiratory protection if necessary. If eye contact occurs, flush thoroughly with water for 15 minutes. If irritation persists, call a physician. Do not swallow. If swallowed, call a physician. For more information call Product Safety: 800 507-8899 or see the SDS at usg.com.

KEEP OUT OF REACH OF CHILDREN

TRADEMARKS

The trademarks USG, FIRST COAT, SHEETROCK, TUFF-HIDE, IT'S YOUR WORLD. BUILD IT., the USG logo, the design elements and colors, and related marks are trademarks of USG Corporation or its affiliates. The trademarks IBC and INTERNATIONAL BUILDING CODE are trademarks of International Code Council, Inc.

NOTE

Products described here may not be available in all geographic markets. Consult your USG Company sales office or representative for information. The information in this document is subject to change without notice. USG Corporation assumes no responsibility for any errors that may inadvertently appear in this document.

NOTICE

We shall not be liable for incidental and consequential damages, directly or indirectly sustained, nor for any loss caused by application of these goods not in accordance with current printed instructions or for other than the intended use. Our liability is expressly limited to replacement of defective goods. Any claim shall be deemed waived unless made in writing to us within thirty (30) days from date it was or reasonably should have been discovered.

SAFETY FIRST!

Follow good safety and industrial hygiene practices during handling and installation of all products and systems. Take necessary precautions and wear the appropriate personal protective equipment as needed. Read Safety Data Sheets and related literature on products before specification and/or installation.

800 USG.4YOU
800 (874-4968)
usg.com



Notes:

- 1/4 in. panels are recommended as a base layer for improving sound control in double-layer steel- and wood-stud partitions, and for use over old wall and ceiling surfaces with short radii. 3/8 in. panels are recommended in double-wall systems over wood framing, and in repair and remodeling. 1/2 in. panels are recommended for single-layer applications in new residential construction.
- Long edge position relative to framing.
- 3/8 in. panels are not to be applied to ceilings where the gypsum board supports insulation.
- Not recommended if water-based texturing material is to be applied.
- Maximum frame spacing is 16 in. if water-based texturing material is to be applied.
- Adhesive must be used to laminate 3/8 in. panels for double-layer ceilings.
- Maximum frame spacing 16 in. OC if fire rating required.

For high-quality finishing results, USG recommends USG Sheetrock® Brand finishing products.

Painting products and systems should be used that comply with recommendations and requirements in Appendices of ASTM C840. For priming and decorating with paint, texture or wall covering, follow manufacturer's directions for materials used. Gypsum Association's *Recommended Specification for Levels of Gypsum Board Finish* (GA-214) should be referred to in order to determine the level of finishing needed to ensure a surface properly prepared to accept the final decoration.

All surfaces, including applied joint compound, must be thoroughly dry, dust-free and not glossy. Prime with USG Sheetrock® Brand First Coat™ Primer or with an undiluted, interior latex flat paint with high-solids content. Allow to dry before decorating.

To improve fastener concealment where gypsum panel walls and ceilings will be subjected to severe artificial or natural side lighting, or will be decorated with a gloss paint (eggshell, semigloss or gloss), the gypsum panel should be skim coated with joint compound. This equalizes suction and texture differences between the drywall face paper and the finished joint compound before painting. As an alternative to skim coating, or when a Level 5 finish is required, use USG Sheetrock® Brand Tuff-Hide™ Primer-Surfacer.

For more information, refer to USG literature *Finishing & Decorating Gypsum Panels White Paper* (J2010).

PRODUCT DATA

Thickness	USG Sheetrock® Brand Gypsum Panels		
	1/4 in. (6.4 mm)	3/8 in. (9.5 mm)	1/2 in. (12.7 mm)
Lengths	8-16 ft. (2438-4877 mm)	8-16 ft. (2438-4877 mm)	8-16 ft. (2438-4877 mm)
Width*	4 ft. (1219 mm)	4 ft. (1219 mm)	4 ft. (1219 mm)
Weight*, nominal	1.2 lb./sq. ft. (5.9 kg/sq. m.)	1.4 lb./sq. ft. (6.8 kg/sq. m.)	1.6 lb./sq. ft. (7.8 kg/sq. m.)
Edges	Tapered	Tapered	Tapered
Packaging	Two panels per bundle	Two panels per bundle	Two panels per bundle
Surface-burning characteristics per ASTM E84	Flame spread: 15 Smoke development: 0 Classification: Class A	Flame spread: 15 Smoke development: 0 Classification: Class A	Flame spread: 15 Smoke development: 0 Classification: Class A

Notes:

- Other sizes available by special order. Check with your local USG representative for availability.
- Represents approximate weight for design and shipping purposes. For specific product weight in your area, contact your local USG representative or call the Customer Service Center at 800 950-3839.

COMPLIANCE

- Meet or exceed ASTM C1396 specifications
- Classified as a Class A Interior Finish Material per Section 803.1 of the International Building Code® (IBC®)
- Achieved GREENGUARD Gold Certification and qualifies as a low VOC emitting material (meets CA 01350)

SUBMITTAL APPROVALS

Job Name	
Contractor	Date

Manufactured by
United States Gypsum Company
550 West Adams Street
Chicago, IL 60661

WB1473-USA-ENG/rev. 6-17
© 2017 USG Corporation and/or
its affiliates. All rights reserved.
Printed in U.S.A.

USG
IT'S YOUR WORLD. BUILD IT.®