

kobiworks



CATALYST

Frameless Double Sliding Door



Questions?

Customer Support: **+1 909-276-7014**
Operation Hours: **8am-5pm Mon-Fri**
PST

Complicated Stuff?

cs@kobiworks.com



General Information



Threshold for the **CATALYST** model has to be at least **3-1/4"** wide for the entire shower to fit.

Out Of Plumb tolerance is 1/4" which can be adjusted on the rollers.



Note:

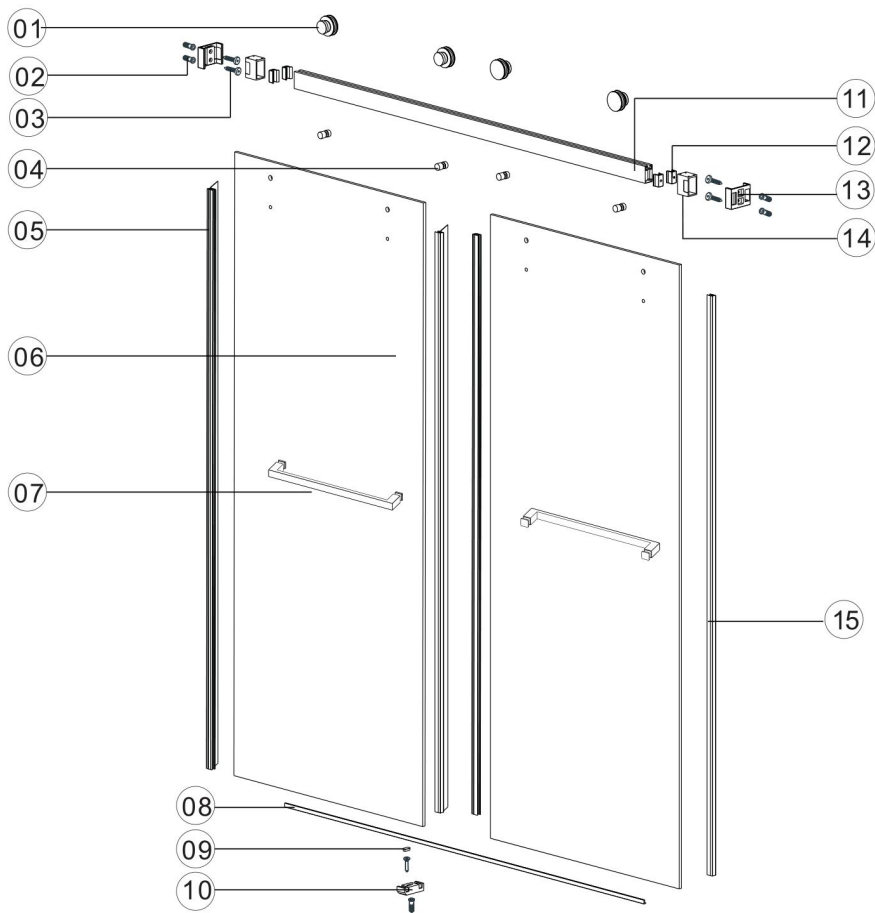
- Installation of this shower door requires the threshold to be drilled (1 hole), contact the manufacturer of the base in regards to any questions related drilling holes into their products.
- Recommend using waterproof, mildew-resistant silicone caulk.
- Recommend caulking each drilled holes to waterproof further.
- Professional Installation Recommended.
- Minimum two installers required.




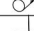





Summary:







1. Measuring the opening space.
2. Punch the holes by template or by height.
3. Install wall brackets.
4. Install header bar.
5. Apply the top rollers on the glass.
6. Mount one glass on the header bar.
7. Place the guide block between one of the glass and make sure the glass is straight then punch and screw the guide block in place.
8. Install the towel bar or handle.
9. Apply the pvc seals.
10. Silicone or apply the threshold.



Diagram



ITEM	PARTS	DIAGRAM	QTY
1	Roller		4
2	Wall plugs Ø6		5
3	Screw St4x30		5
4	Anti jumping knob		4
5	Plastic seal		2
6	Sliding door		2
7	Towel bar		2
8	Anti-splash threshold		1
9	Floor guide cover cap		1

ITEM	PARTS	DIAGRAM	QTY
10	Floor guide		1
11	Rail		1
12	Anti-collision block		4
13	Wall mount bracket		2
14	Guide rail bracket		2
15	Door seal		2

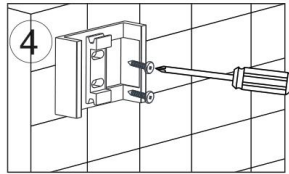
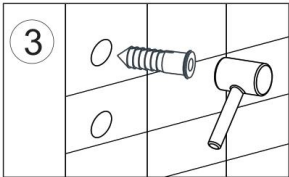
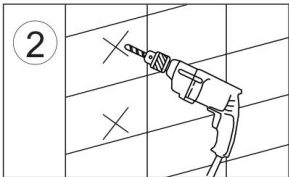
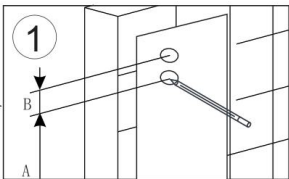
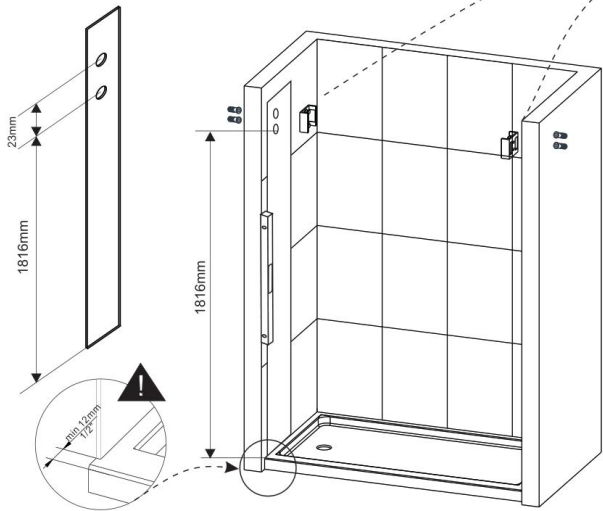
Step 1.

Using the provided drilling template, mark the holes and drill the holes using a drill bit in your case. Mount the wall brackets.

Please make sure the template is placed level, making sure the header bar location will match the glass in case of given a wrong measurement.

For hole locations, please read and compare the locations on the chart.

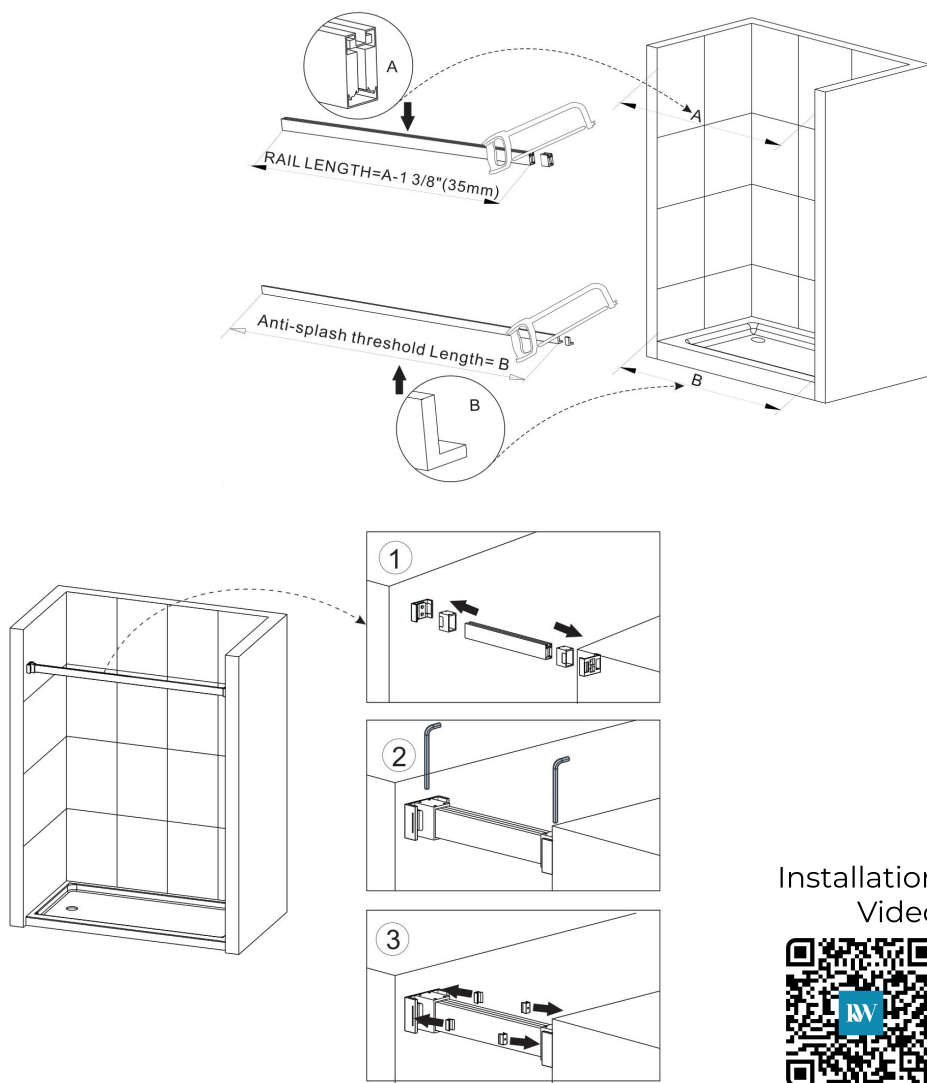
Product Height	A	B
60"	55 1/2"	Add 7/8"
66"	61 1/2"	
72"	67 1/2"	
76"	71 1/2"	
79"	74 1/2"	



Step 2.

Cut the header bar to your top-opening minus $1\frac{3}{8}"$.

Cut the splash threshold to your bottom-opening width.



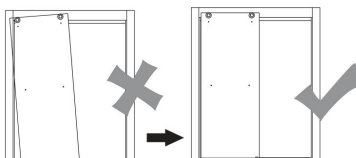
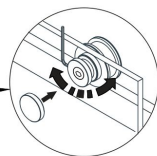
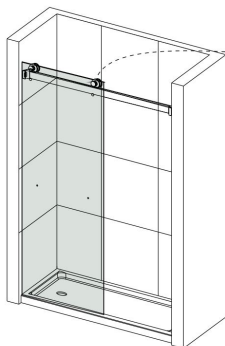
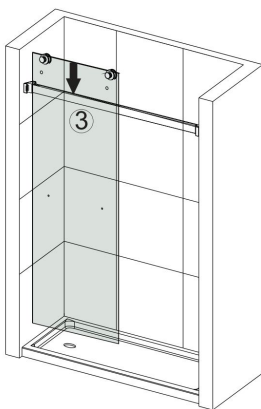
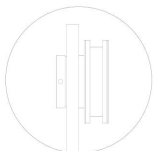
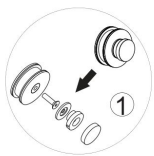
Installation
Video



Step 3.

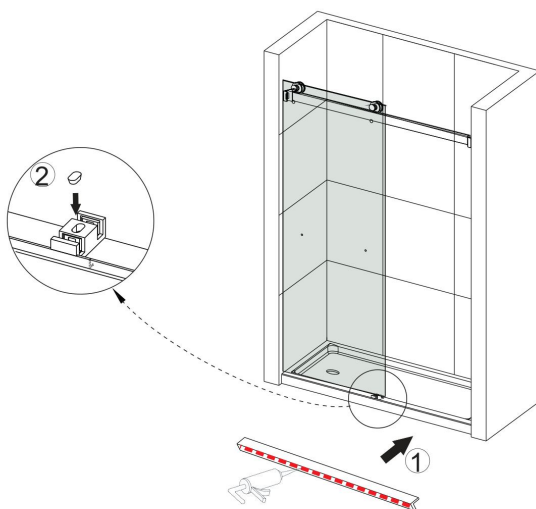
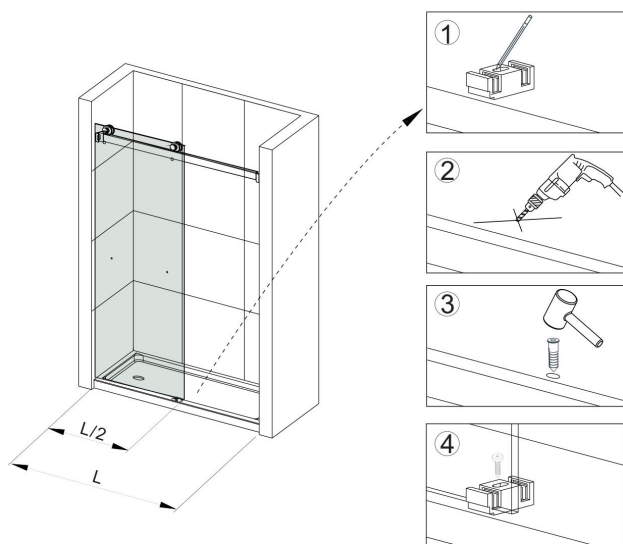
Mount the rollers on the glass and mount it on the header bar. If everything goes well, the glass should be easy to slide.

The rollers has an integrated 1/4" plumb adjustability function as well. Please adjust to your opening.



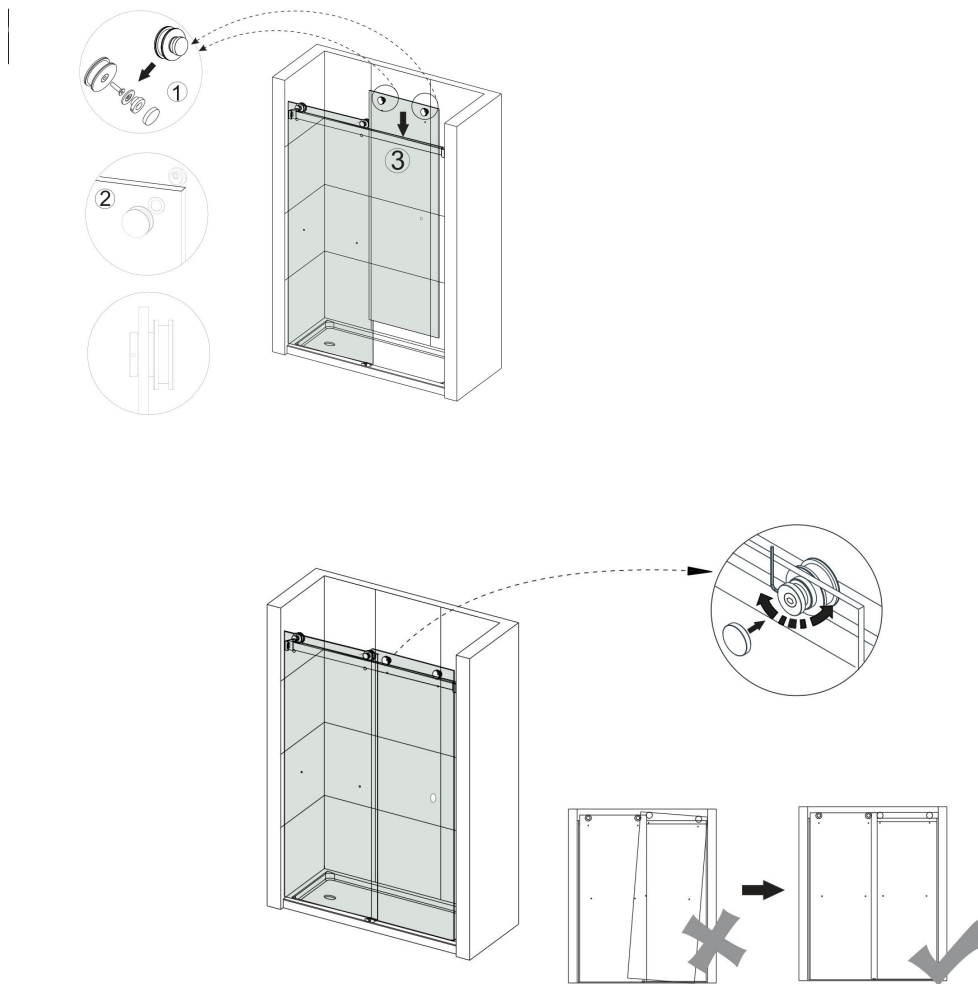
Step 4.

Place the floor guide on the center where both glass will be able to meet and prevent them from jumping off. Punch a hole and secure it with a screw.



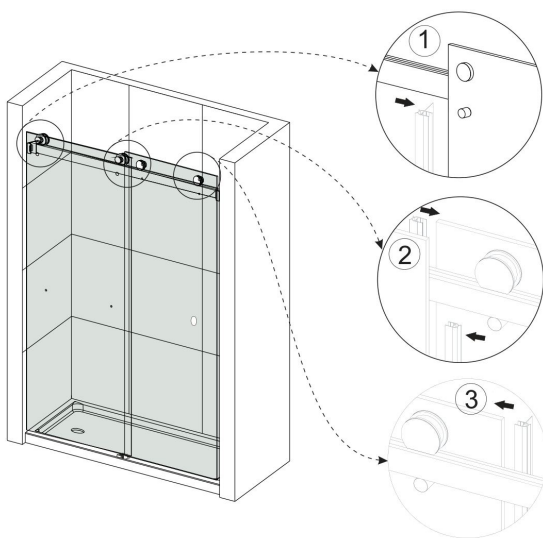
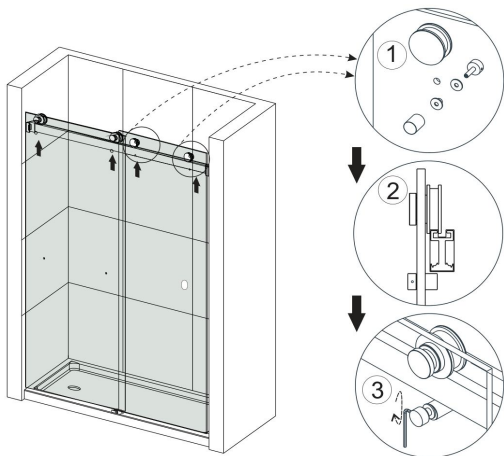
Step 5.

Mount the rollers on the secondary glass and mount it on the header on the inside; as mentioned before the rollers have a 1/4" plumb adjustability function as well. Please adjust to your wall.



Step 6.

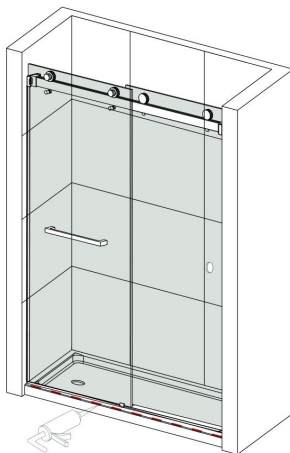
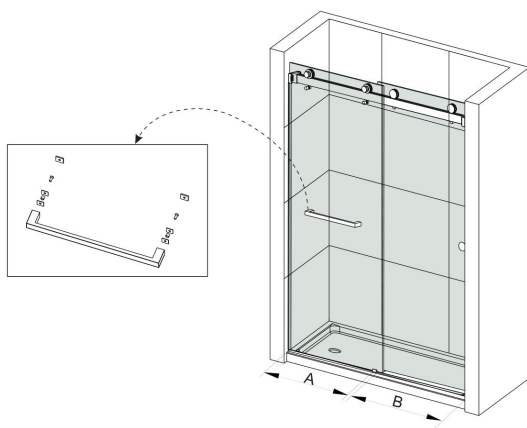
Mount the anti-jump knobs on both doors to prevent them from jumping. And apply the PVC strips onto the door. The strips are separated into 2 of 2 types, two of the wide strips should meet in the center and the thin one should be the one hitting the wall when closed.



Step 7.

Mount the towel bars or the handle onto the door. Make sure it's tight to prevent the handle from jumping on application of force.

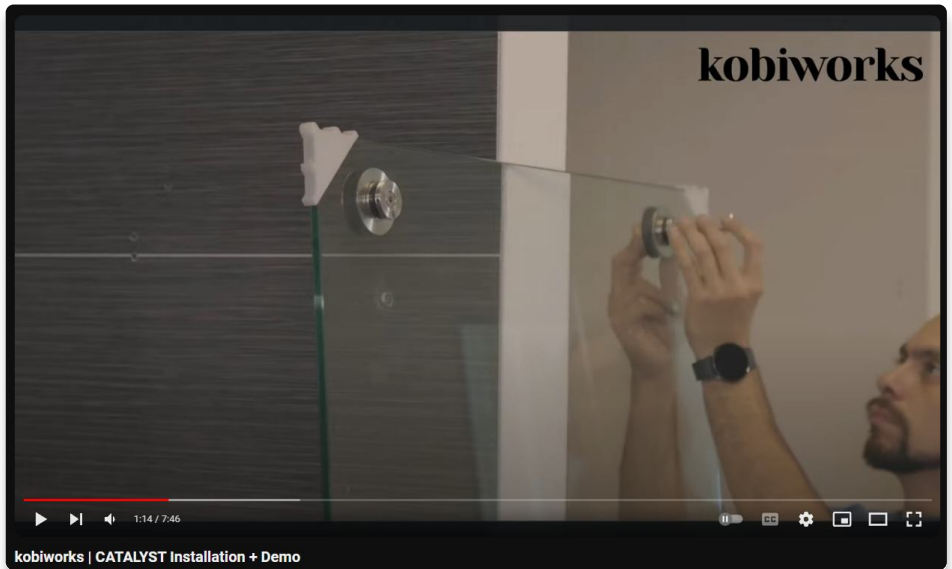
Last step is to apply the anti-splash threshold with silicone onto the bottom of the track guide.



24 HOURS



Watch out! We have an installation video on YouTube too!



Additional Resources

Website: <https://kobiworks.com>

Address: 1265 S. Johnson Dr, City Of Industry, CA 91745



Questions?

Customer Support: **+1 909-276-7014**

Operation Hours: **8am-5pm Mon-Fri**
PST

Complicated Stuff?

cs@kobiworks.com



