



# TECHNICAL DATA SHEET

2400 Boston Street | Suite 200 | Baltimore, MD | 21224

## DAP® ECLIPSE™ Rapid Wall Repair Patch

### PRODUCT DESCRIPTION

DAP® ECLIPSE™ Rapid Wall Repair Patch is a unique and innovative drywall repair solution that is perfect for completing permanent repairs on damaged walls and ceilings. This specially formulated, self-adhesive patch allows you to finish your project faster. It is easy to apply and mess-free allowing you to patch and paint immediately without the need for spackling or sanding. This all-in-one, mess free solution not only provides a permanent, long-lasting repair but is also stronger than drywall itself making it perfect for areas that may see reoccurring impact, such as behind a door. It is as simple as patch, paint, and finish. For interior use only.



PACKAGING	COLOR	UPC
4 – 2 Inch Repair Patch	Clear	0 70798 09162 7
1 – 4 Inch Repair Patch	Clear	0 70798 09164 1
1 – 6 Inch Repair Patch	Clear	0 70798 09166 5

### KEY FEATURES & BENEFITS

- DAP’S FASTEST, STRONGEST & THINNEST DRYWALL REPAIR SOLUTION
- Stronger Than Drywall Itself\*
- Superior Impact Resistance
- All-In-One, Mess-Free
- No Spackling, Sanding or Tools Required
- Finish Project Faster
- Paint Immediately & Finish in Minutes
- Permanent, Long-Lasting
- Won’t peel or lose adhesion over time
- Ideal for repairing damage on drywall wall and ceiling

\*6-inch patch is 4X Stronger and 4-inch patch is 2X Stronger than drywall itself



# TECHNICAL DATA SHEET

2400 Boston Street | Suite 200 | Baltimore, MD | 21224

## SUGGESTED USES

Ideal for completing permanent repairs on damaged walls and ceilings.

- **DAP Eclipse 2-Inch Rapid Wall Repair Patch:** repairs damage up to 1 inch in diameter and is ideal for small repairs such as nail holes, nail pops, screw holes, anchor damage and cable cord removal damage
- **DAP Eclipse 4-Inch Rapid Wall Repair Patch:** repairs damage up to 2 inches in diameter and is ideal for medium repairs and everyday wall damaged caused by moving furniture, roughhousing, or relocating towel racks or toilet paper holders
- **DAP Eclipse 6-Inch Repair Patch:** repairs damage up to 3 inches in diameter and is ideal for larger repairs and specifically designed to withstand doorknob impact

## FOR BEST RESULTS

Make sure to follow the preparation instructions prior to completing the repair (prepping the drywall surface is one of the most important steps to achieving professional results). The smoother your drywall surface is prior to patching, the smoother your finished repair will be.

After removing the protective layer utilizing the pop-up tab, apply two additional thick coats of paint.

Using a primer coat will increase paint adhesion and improve dry time.

Do not apply when temperatures are below 40°F.

Not for exterior use or on wet or damp surfaces.

## APPLICATION

### 1. PREP



**Prep:** Push in damaged or rough edges to the inside of the wall and sand drywall damage and surrounding area smooth using sandpaper. Using a dry or damp cloth, clean the surface to be repaired to remove any dirt, dust, and debris, making sure you have a smooth, dust-free surface. If you use a damp cloth, make sure the entire surface is dry before applying Eclipse Rapid Wall Repair Patch.

### 2. PEEL



**Peel:** Using the easy-to-remove slit, remove the patch from the back, white carrier sheet (like removing a sticker) exposing the entire adhesive surface of the patch.



# TECHNICAL DATA SHEET

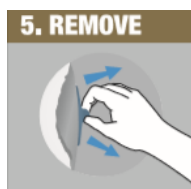
2400 Boston Street | Suite 200 | Baltimore, MD | 21224



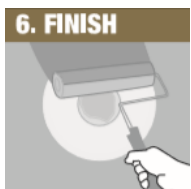
**Place:** Holding the outer edges of the patch, position the grey center circle of the patch over the center of the damage and completely smooth and adhere the patch to the surrounding drywall using your hand. Press firmly against drywall to ensure adhesion but only press where the patch is in contact with the drywall. Do not push through the damaged area and do not remove the DAP pop-up tab or protective layer until after first coat of paint.



**Paint:** Paint immediately with a high-quality paint roller and interior latex paint. Recommend painting with light pressure and applying copious amount of paint. **NO SPACKLING OR SANDING NECESSARY.**



**Remove:** After first coat of paint is applied and surrounding drywall is dry, remove the clear protective layer by pulling the pop-up tab.



**Finish:** Apply two additional thick coats of paint for a smooth and invisible repair. DAP Eclipse can also be used for textured walls & ceilings with use of aerosol spray textures or textured paint rollers\*

\*If using DAP Eclipse Rapid Wall Repair Patches on textured walls, skip step 4 and move directly to step 5 by removing the protective layer immediately after patching the damaged surface. Then apply texture using aerosol spray textures or textured paint rollers to match existing wall surface.



# TECHNICAL DATA SHEET

2400 Boston Street | Suite 200 | Baltimore, MD | 21224

## TYPICAL PHYSICAL & CHEMICAL PROPERTIES

Vehicle	Transparent film
Application & Service Temperature	55°F- 90°F
Shelf Life	24 months
Freezing	Freeze/Thaw stable 5 cycles at 0°F
Dry Time	See paint manufacturer recommendations for dry time. The paint will dry slower on the patch than the surrounding drywall.

## CLEAN UP & STORAGE

Store patches inside in a cool, dry place away from extreme heat or cold.

## SAFETY

See product label and Safety Data Sheet (SDS) for health and safety information. You can request an SDS by visiting our website at [dap.com](http://dap.com) or by calling 888-DAP-TIPS.

## WARRANTY

Limited Warranty: If product fails to perform when used as directed, within one year of date of purchase, call 888-DAP-TIPS, with your sales receipt and product container available, for replacement product or sales price refund. DAP Products, Inc. will not be responsible for incidental or consequential damages.

## COMPANY IDENTIFICATION

**Manufacturer:** DAP Products Inc., 2400 Boston Street, Baltimore, Maryland 21224

**Usage Information:** Call **888-DAP-TIPS** or visit [dap.com](http://dap.com) & click on "Ask the Expert"

**Order Information:** 800-327-3339 or [orders@dap.com](mailto:orders@dap.com)

**Fax Number:** 410-558-1068

**Also, visit the DAP website at [dap.com](http://dap.com)**