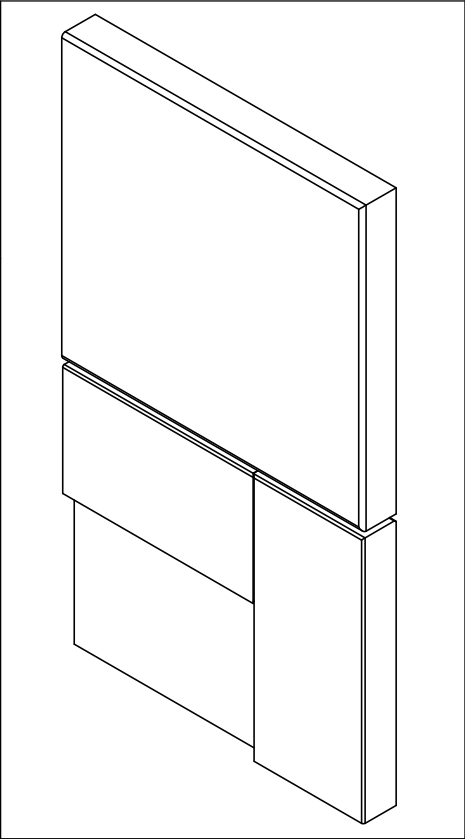
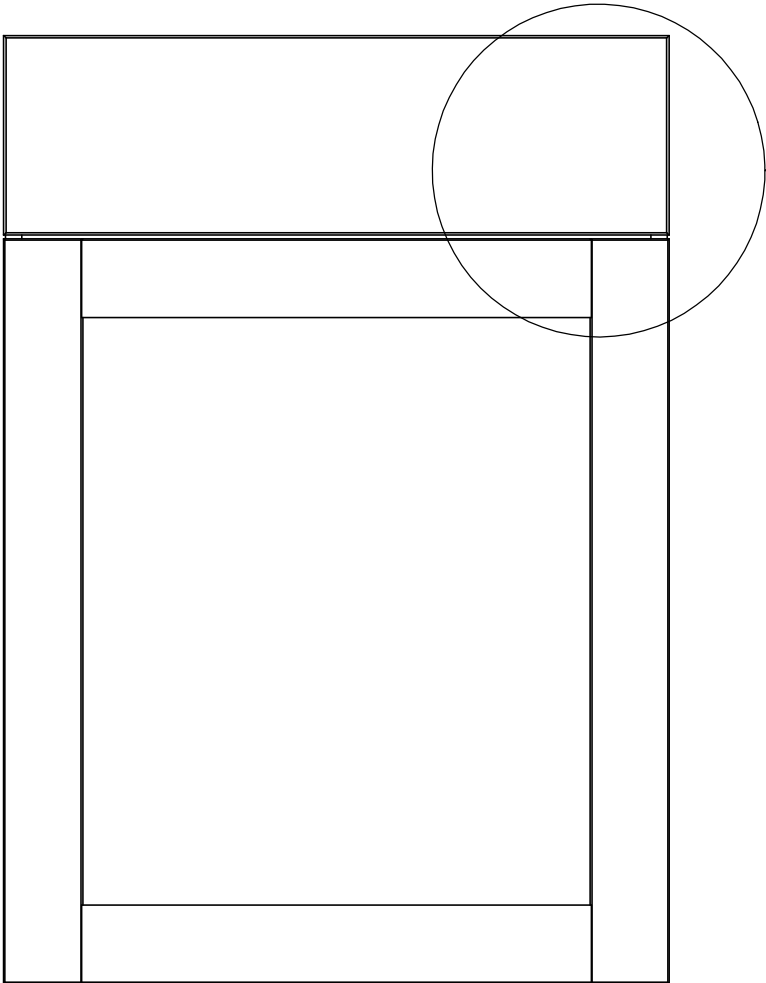



Item ID	Front Thickness [in] mm	Door Thickness [in] mm
CM2135B-DK	[.75] 19	[.75] 19

This profile belongs to CM2135B-DK



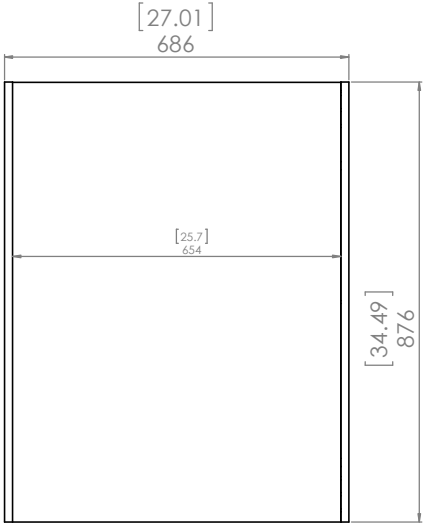
Detailed View

<b>Profile: Cambridge Dusk</b>		
<small>           PROPRIETARY AND CONFIDENTIAL            THE INFORMATION CONTAINED IN THIS DRAWING IS THE SOLE PROPERTY OF WOODCRAFTERS. ANY REPRODUCTION IN PART OR AS A WHOLE WITHOUT THE WRITTEN PERMISSION OF WOODCRAFTERS IS PROHIBITED.         </small>	<small>           UNLESS OTHERWISE SPECIFIED            DIMENSIONS ARE IN MM AND [INCHES]            TOLERANCES ARE            +.039[1]-.039[1]            SCALE:1:2         </small>	

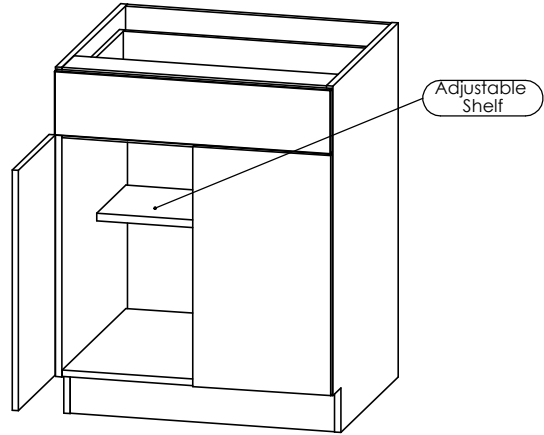
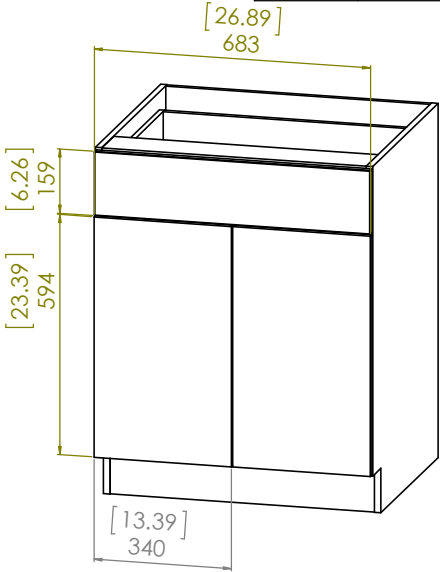
Item ID	Shelf Thickness [in] mm	Shelf Length and Width [in] mm	Depth "X" [in] mm
BT2735B-BT	[.75] 19	[25.59x10.57] 650x268.50	[24.7] 626.5
BT2735B-WH	[.75] 19		[24.5] 622.5
BT2735B-RC	[.75] 19		[24.7] 626.5
CM2735B-Dk	[.75] 19		[24.7] 626.5
CM2735B-KG	[.75] 19		[24.5] 622.5
EH2735B-GB	[.75] 19		[24.7] 626.5

Description					
Kitchen Base Cabinet with Soft Close Full Extension Drawer 27W x 34.5H					
REV	ECO#	Description	REV'D BY DATE	CHK'D BY DATE	APRV'D BY DATE
1		Removed back cleats and MDF backing and replaced them with a full back of PB 1/2in	ASG 7/25/18	ASG 7/25/18	ASG 7/25/18

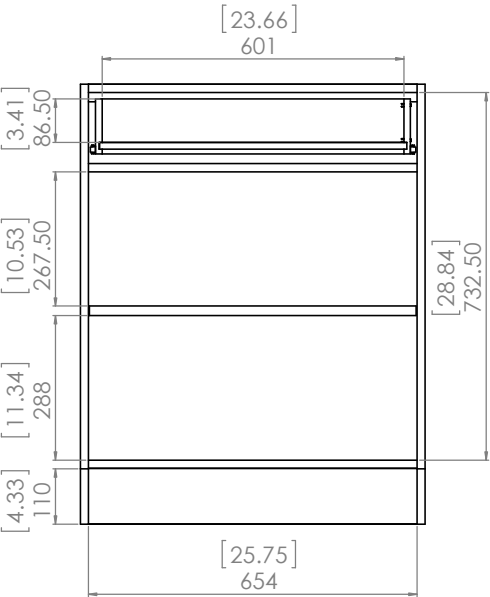
Full Back 1/2in  
654x876



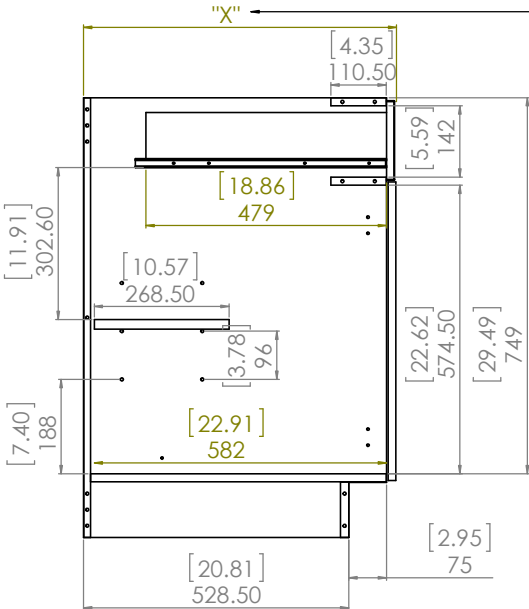
Back View



Isometric View



Front View  
(front door  
and drawer  
removed)



Depth "X" depends on  
door profile

Side View  
(left panel  
removed)

NAME	SIGNATURE	DATE	MATERIAL
Mark Flores		10/30/17	
DRAWN	CHK'D	APPV'D	MFG
WEIGHT:		SCALE:1:5	
UNLESS OTHERWISE SPECIFIED		DIMENSIONS ARE IN mm AND (INCHES)	
TOLERANCES ARE +/- .10(0.039)		SCALE:1:5	
PROPRIETARY AND CONFIDENTIAL		THE INFORMATION CONTAINED IN THIS DRAWING IS THE SOLE PROPERTY OF WOODCRAFTERS. ANY REPRODUCTION IN PART OR AS A WHOLE WITHOUT THE WRITTEN PERMISSION OF WOODCRAFTERS IS PROHIBITED.	
Base_Cabinet_27in		SHEET 1 OF 1	

