

Tundra®



PLUMBING

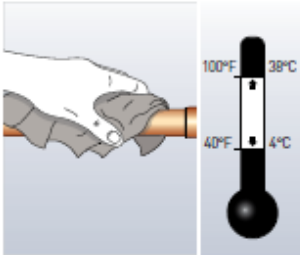


HEATING

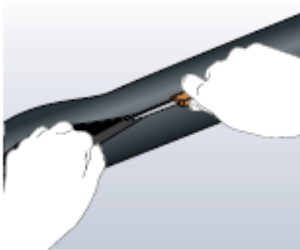


AIR CONDITIONING

TUNDRA INSTALLATION TIPS



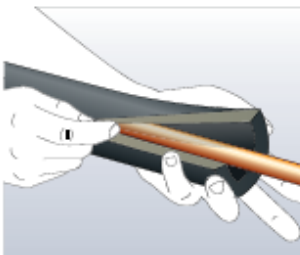
1. Clean all dust, dirt, oil and water from pipework using denatured alcohol where necessary. Install Tundra when ambient temperature is between 40°F (4°C) and 100°F (38°C).



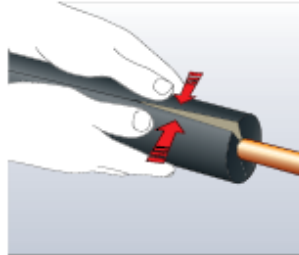
2. With a sharp, non-serrated knife slit the tube along the entire length. When slitting the tube take care not to cut through opposite side of wall.



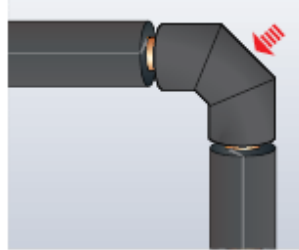
3. Place the slit tube onto the clean pipe; apply a thin, even film of Armacell 520 adhesive to the two cut edges using a short bristle brush. Apply the adhesive along the tube length. Alternate 6-8" on both sides to maintain even tackiness.



4. Follow the instructions on the adhesive can.

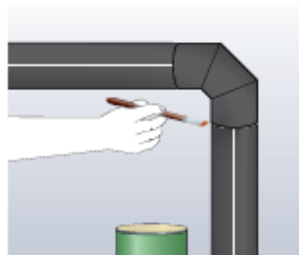


5. Free the seams from the pipe where applicable, align the edges and press the seam detail with firm, even pressure to finish.



6. For soldered or welded pipes, insulate the fittings first followed by the straight sections.

Note: Tight bends in pipes should be insulated with PE pre-fabricated fittings (Tee's and Elbows), rather than sliding the tube around elbows.



 **armacell®**

www.armacell.us