



ALUMINUM GUTTER SYSTEMS

Read through these directions prior to installation

Installation Instructions

GET READY! - TOOLS NEEDED

- Ladder
- Level
- Tin Snips
- Hack Saw
- String
- Pliers
- Screwdriver
- Hammer
- Tape Measure
- Safety Glasses

STEP 1 - INSPECTION

Remove the old gutter and inspect the fascia board for damage. Repair or replace any damage if necessary.

STEP 2 - DOWNPIPE LAYOUT

Identify where the downspout(s) will be located.

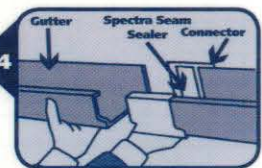


STEP 3

Use a chalk line or guide string to mark the slope of the gutter. On the non-downspout end, tack the line close to the roofline. At the downspout end, you want to tack the line slightly lower, at an angle of 1 inch for every 40 feet. This will allow water to flow to the downspout. Mark the line and remove. Repeat if necessary.

STEP 4 - ASSEMBLE THE GUTTER

Make sure the downspout is in the proper location. All end caps, end pieces, joiners, slip joint connectors need to be secured with screws. Seal all the areas where the different pieces come together and where fasteners protrude into the gutter.



STEP 5

Hang the Gutter.

Decide on which hanger system to use to support the gutter. One (1) hanger system is to be used every 24 inches.



Screw & Ferrule

Insert Ferrule into top part of the gutter. Drill the screw through the gutter and ferrule and into the fascia board. SEE PACKAGE INSTRUCTIONS.



Snap Lock Fascia Bracket

Nail onto fascia board aligning the top of the bracket with the chalk line. SEE PACKAGE INSTRUCTIONS.



Hidden Hanger w/screw

Roll the hanger under the front lip of the gutter and snap the back into place. Drill the screw through the back of the gutter and into the fascia board. SEE PACKAGE INSTRUCTIONS.



Hidden Hanger

Roll the hanger under the front lip of the gutter and snap the back into place. Drive a nail or screw through the backside of the gutter and into the fascia board. SEE PACKAGE INSTRUCTIONS.



Spike & Ferrule

Insert Ferrule under the front line of the gutter. Use a hammer to drive the spike through the gutter and ferrule and into the fascia board. SEE PACKAGE INSTRUCTIONS.



Roof Hanger w/strap

Use this only when there is no fascia board. SEE PACKAGE INSTRUCTIONS.

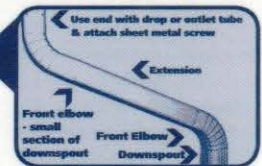
STEP 6 - HOW TO HANDLE CORNERS

If you need to turn a corner on your house, a box miter is used. Miter is installed to gutter with a slip joint connector or joiner - see package for instructions.



STEP 7 - ASSEMBLE THE DOWNSPOUTS & ELBOWS

The downspout and elbows are designed with one end smaller than the other. The parts are joined by fitting the larger end of one over the smaller end of the other and a screw is used to hold them together. The large end should always face up. Two elbows are used to connect the gutter to the downspout. An extension piece may be needed. Cut and place between the elbows to make the downspout fit flat on the wall. Place an elbow (front or side facing) at the bottom of the downspout to direct water away from the house foundation.



STEP 8 - ATTACH THE DOWNSPOUTS & ELBOWS

Place top elbow onto outlet, fasten or mount to wall with Downspout Bands- two (2) for every 10 feet of down pipe. Downspout Band is wrapped around 3 sides of downspout and fastened with a screw and secured to wall. Go back and secure top elbow to outlet with screws.

