

Tuscany®

**2-DOOR
LAUNDRY CABINET KIT**



OWNER'S MANUAL

QL112
672-5162

Rev. 20200522

Table of Contents

Safety Information	2	Installing the Strainer	8
Warranty		Mounting the Utility Sink	9
One Year Limited Warranty	3	Placement	9
Warranty Claim Procedure	3	Drainage	9
Pre-Installation		Supply Line	9
Tools/Materials Required	4	Maintenance	
Parts Required	4	Cartridge Replacement	9
Package Contents	5	Care and Cleaning	
Installation		Utility Sink	10
Installing the Cabinet Feet	6	Cabinet	10
Installing the Handles	6	Service Parts	11
Installing the Faucet	7		

Safety Information

READ AND SAVE THESE INSTRUCTIONS

1. Unpack and inspect this product for chips, scratches, cracks, dents, and scuff marks. Do not install this product if any damages or defects are identified.
2. Use this product only in the manner intended by the manufacturer. If you have any questions, contact the manufacturer.
3. Installation work and plumbing must be done by qualified person(s) in accordance with all applicable codes and standards.
4. Protect the entire surface during installation.



DANGER: Always wear safety goggles and gloves in order to avoid personal injury.

Warranty

ONE YEAR LIMITED WARRANTY

A thorough inspection must be made before installation and any damage must be promptly reported. We will not be liable for failures or damage that could have been discovered or avoided by proper inspection and testing prior to installation.

We warrant this product to be free from defects in materials or workmanship for one (1) year from the date of purchase. Proof of purchase (original sales receipt) from the original consumer purchaser must be made available to us for all warranty claims.

This warranty is non-transferable and shall be voided if the unit is removed from its initial installation or if it is not installed following the manufacturer's instructions. It does not apply in the event of product damage due to the use of other than genuine replacement parts, (Replacement parts may be obtained by e-mail at cs@conglomkb.com or by calling 1-888-449-9194 between 8:30 am - 5:00 pm EST) installation error, abuse, misuse or improper care and maintenance (whether performed by a plumber, contractor, service provider or member of the purchaser's household). The warranty excludes damage due to aggressive air or water conditions, harsh or abrasive cleaners and/or materials.

Under no circumstance shall we be held liable for personal injury or property damage resulting from improper installation or use of this product. We will not be held liable for inconvenience caused by loss of use of this product, costs incurred for labour or materials, removal and installation of replacement units, or any other incidental or consequential damages. Costs relating to obtaining access for repair or replacement are the responsibility of the user.

Our obligation shall be limited to the repair or replacement of a unit (at our discretion) that may prove, by our sole examination, to be defective under normal use and service during the warranty period.

Any failure of this product that is not traceable to a defect in material or workmanship is not covered by this warranty. These non-warrantable items include, but are not limited to:

- Improper installation not in accordance with manufacturer's instructions.
- Dents and/or scratches incurred during shipping, handling, or installation.
- Change in colour or finish due to chemical usage.
- Damage caused by failure to follow care and cleaning guidelines, including damage caused by the use of abrasive cleaners.
- Alterations made to the unit by the purchaser or installer.
- Damage caused by accidental impact, fire, flood, freezing, and normal wear.
- Bends and warping caused by forced connections, over-tightened fittings, and inadequate support during installation.
- Damage caused by use of chlorine-based cleaners.

This warranty does not extend to commercial and institutional installation or use.

WARRANTY CLAIM PROCEDURE

If a claimable defect occurs or replacement parts are needed, please contact our customer service team at cs@conglomkb.com or 1-888-449-9194 (8:30 am - 5 pm, EST, Monday - Friday).

Before you make your call, please ensure that you have:

- Model number or description.
- Proof of sale.
- Details regarding the defect and/or part number.
- Name(s) and address(es) of the owner and/or installer.

Pre-Installation

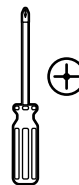
TOOLS/MATERIALS REQUIRED (NOT SUPPLIED)



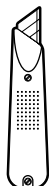
Adjustable
wrench



Needle nose
pliers



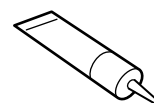
Phillips
screwdriver



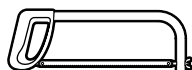
Utility knife



Pipe wrench



Sealant



Hacksaw



Carpenter's level



Hex key



Safety gloves



Safety goggles

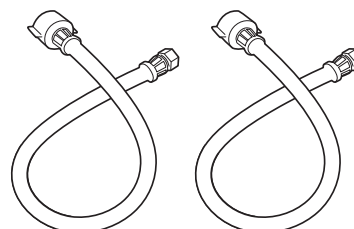
PARTS REQUIRED (NOT SUPPLIED)



Tail Pipe



P-Trap

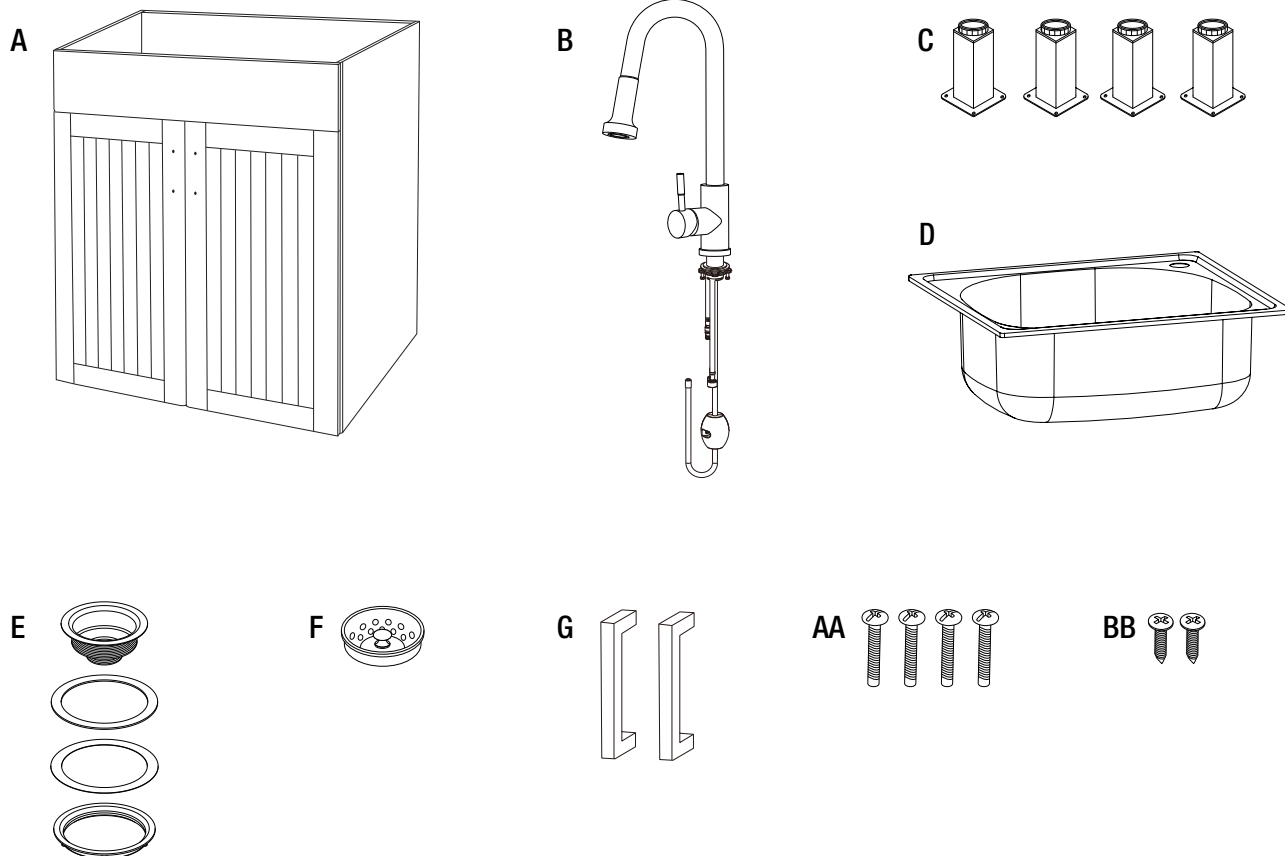


Supply Lines

Pre-Installation (continued)

PACKAGE CONTENTS

Carefully check the utility cabinet for damage and/or missing parts prior to installation. If there is any damage or if you are missing parts, do not proceed with the installation. Report damage and/or missing parts immediately to our customer service team at cs@conglomkb.com or 1-888-449-9194 (Service available in English and French, Monday - Friday from 8:30 am - 5:00 pm EST). Please do not dispose of packaging before you are satisfied with your new utility cabinet.



Part	Description	Quantity
A	Cabinet	1
B	Faucet	1
C	Cabinet legs	4
D	Utility sink	1
E	Strainer assembly	1
F	Strainer basket	1
G	Door handle	2
AA	Handle screws	4
BB	Cabinet Leg Screws	16

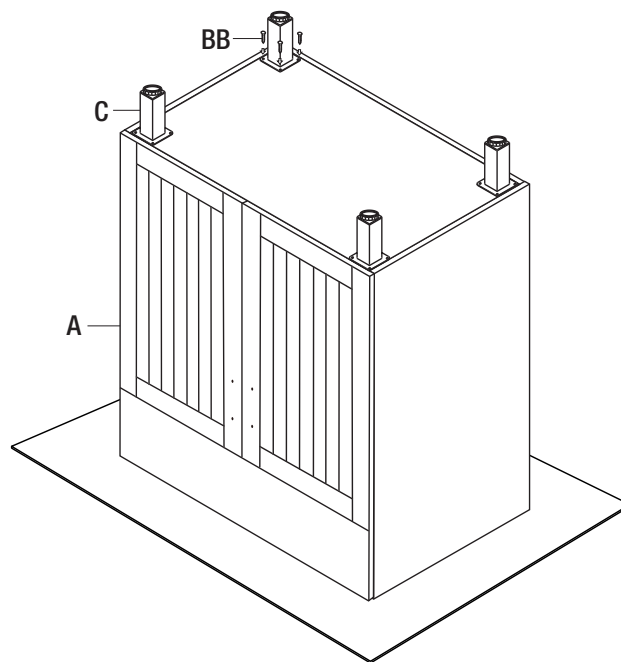
Installation

CABINET FEET INSTALLATION



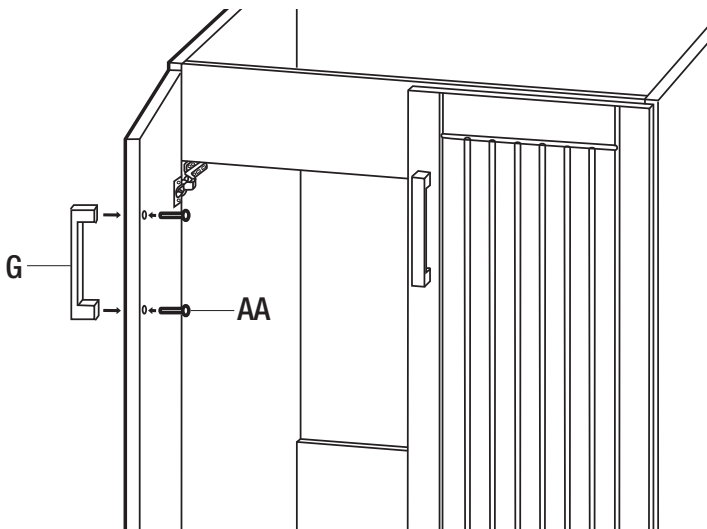
CAUTION: Do not rest or bump the leveling feet on the side as this may cause them to detach or break.

- Remove the cabinet (A) and place it on a soft, protective surface.
- Attach each cabinet leg (C) to the bottom of the cabinet (A) using four of the provided screws (BB).
- Gently rotate the cabinet (A) right side up.
- Place a carpenter's level on top of the cabinet, then adjust each leveling foot until the cabinet is level.



DOOR HANDLE INSTALLATION

- Insert the door handle screws (AA) into the pre-drilled holes on each door.
- Attach the door handle (G) and hand tighten the door handle screws (AA). Do not overtighten.

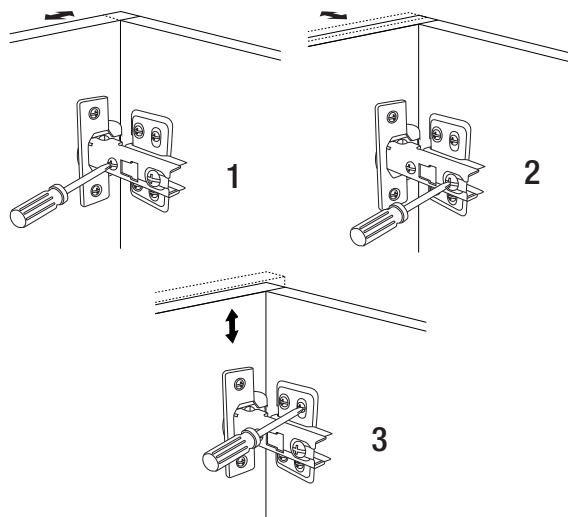


Installation (continued)

DOOR POSITION ADJUSTMENT

If the doors need to be repositioned, the hinges can be adjusted to ensure a precise fit with the cabinet.

1. The lateral adjustment screw adjusts the door orientation from left to right.
2. The horizontal adjustment screw adjusts the door orientation from front to back.
3. The vertical adjustment screw adjusts the orientation up or down.



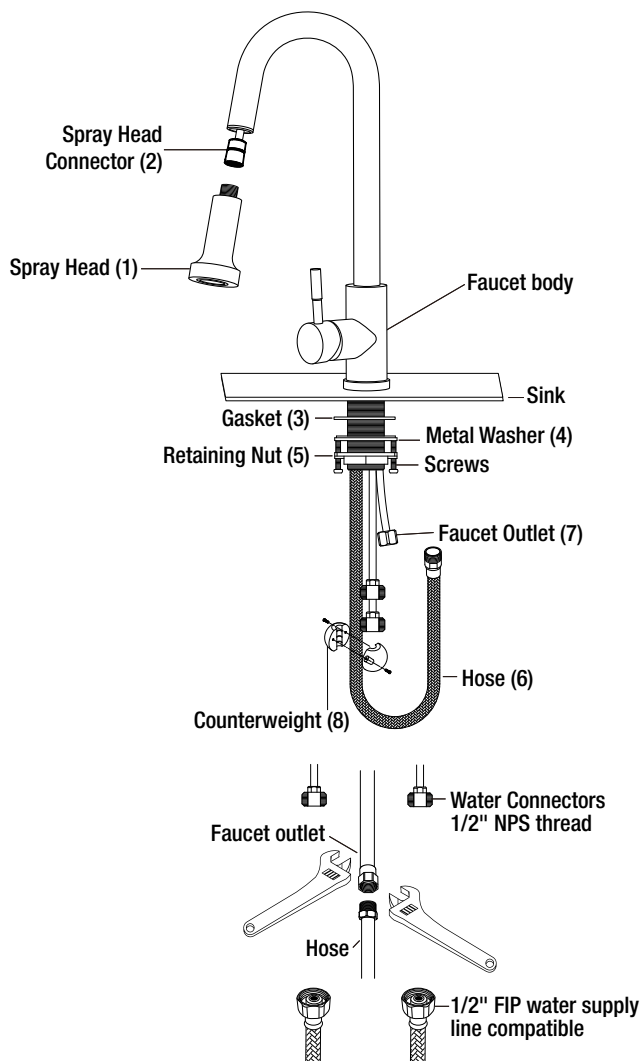
INSTALLING THE FAUCET

- Connect the spray head (1) to the spray head connector (2).
- Remove the gasket (3), metal washer (4), and retaining nut (5) from the faucet.
- Install the faucet through the hole in the sink.
- From underneath, secure the faucet to the sink with the gasket (3), metal washer (4), and retaining nut (5).
- Tighten the retaining nut (5) by hand until it is snug. Use a wrench to tighten it down. Gently tighten the two screws on the retaining nut. Do not over tighten.
- Hand-tighten the hose (6) to the faucet outlet (7). Tighten the fittings using two wrenches. Hold the faucet outlet (7) steady with a wrench while turning the hose fitting with another wrench until it is snug.

NOTE:

Failing to use two wrenches can damage the faucet. Do not overtighten.

- Push the spray head (1) into the faucet neck. Install the counterweight (8) a couple of inches from the bottom of the hose on the side closest to the spray head (1). There should be no slack in the hose and it should retract freely.
- Connect the water supply lines (not supplied) to the faucet.
- This faucet is equipped with standard 1/2" NPS male thread connectors that are compatible with standard 1/2" FIP water supply lines.



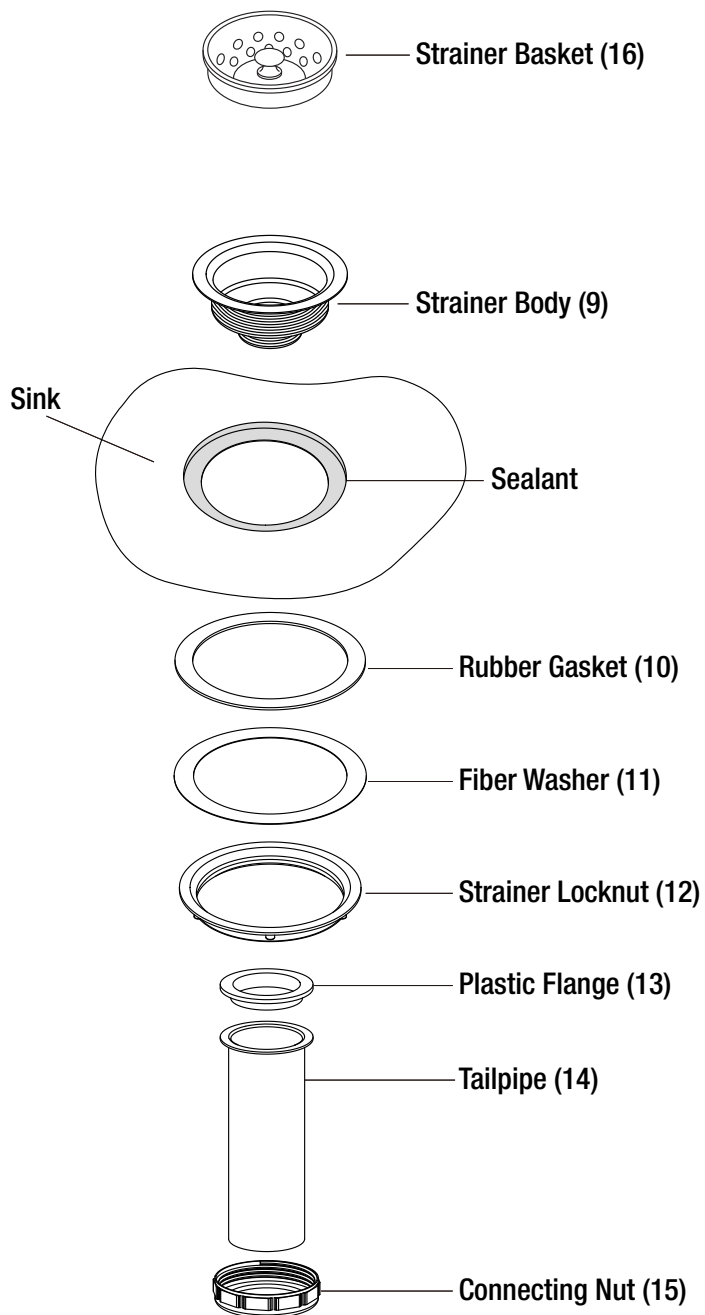
Installation (continued)

INSTALLING THE STRAINER

- Apply plumbing putty or silicone sealant to the top side of the drain opening.
- Insert the strainer body (9) into the drain opening and press it down until it is evenly seated.
- Assemble the rubber gasket (10), fiber washer (11) and strainer locknut (12) onto the strainer body (9) from underneath the sink. Hand tighten the strainer locknut (12) until it is snug. Do not overtighten.
- Insert the plastic flange (13) into the flange-end of the tailpipe (14) (not supplied) then secure the tailpipe to the strainer body using the connecting nut (15). Tighten the connecting nut (15) until it is snug. Do not overtighten.
- Remove excess sealant from around the drain opening.

NOTE:

The tail pipe is not supplied.



Installation (continued)

MOUNTING THE UTILITY SINK

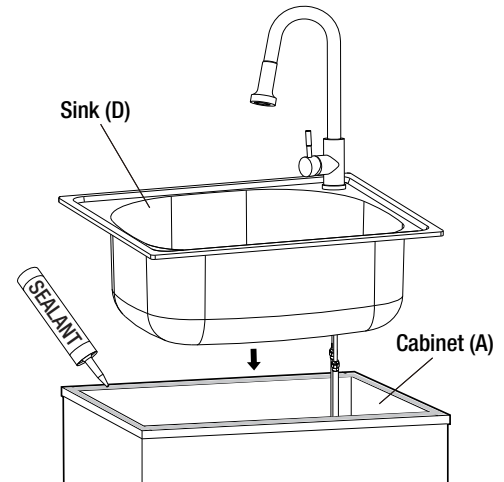
- Carefully place a bead of sealant all around the top of the cabinet (A).
- Ease the sink (D) into the cabinet (A). Ensure that it is placed evenly and is centered on the cabinet (A). Wipe off any excess sealant. Use masking tape to hold the sink (D) in place until the sealant dries.

PLACEMENT

Push the cabinet (A) against the wall. If required, level it by adjusting the four leveling legs and checking the alignment of the sink (D) using carpenter's level.

IMPORTANT:

- *Secure the cabinet to the wall using hardware best suited for your wall type. Failing to do so could result in property damage or personal injury.*
- *Use silicone sealant to seal the sink to the wall and any adjacent surfaces to keep those surfaces dry. Failing to do so could result in moisture damage.*



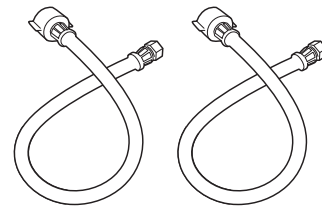
DRAINAGE

The tailpipe (not supplied) previously installed to the drain can now be connected to your household plumbing. In some cases, your household plumbing will have to be modified to ensure proper drainage. If so, please consult a licensed plumber to complete needed modifications.

SUPPLY LINES (NOT INCLUDED)

Connect the supply lines to your home's water supply as per manufacturer's instructions.

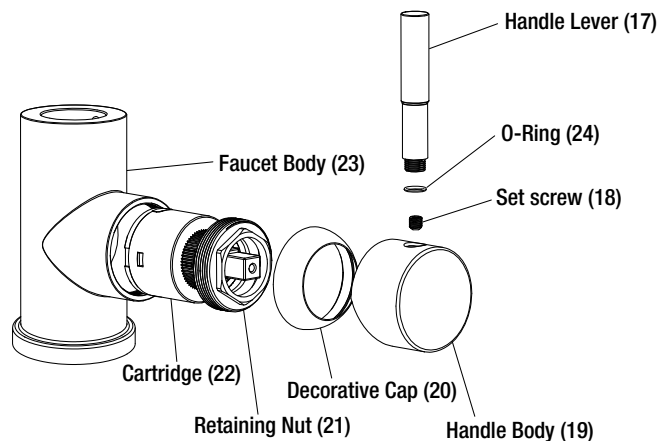
Open the hot and cold water supply valves and check to make sure they have been installed to appropriate inlet ports. Check for leaks. Run hot and cold water uninterrupted for about one minute to remove any residue from the lines.



Maintenance

CARTRIDGE REPLACEMENT

- Turn off the water supply to the faucet.
- Unscrew the handle lever (17). Loosen the set screw (18) with the hex key and remove the handle body (19).
- Gently unscrew the decorative cap (20) and retaining nut (21).
- Pull the cartridge (22) out of the faucet body (23) and replace it with a new ceramic cartridge. Ensure new cartridge is seated properly with the locating pins in appropriate place.
- Secure the cartridge in place using the retaining nut (21).
- Gently tighten the retaining nut (21) using a wrench. Do not overtighten.
- Reinstall the decorative cap (20). Slide the handle body (19) back onto the cartridge and make sure it rotates freely. Secure the handle body (19) in place using the set screw (18) and reinstall the handle lever (17).
- Turn the water supply to the faucet back on.
- Operate the faucet to make sure everything works correctly and check for leaks.



Care and Cleaning

Your sink is manufactured with the highest grade stainless steel and will provide you many years of enjoyment with the proper care.

SINK

Do
<ul style="list-style-type: none">- After use, always rinse your sink with tap water to dilute and remove deposits.- Towel dry after use whenever possible to prevent water spots. Should water spots occur, clean with a mild solution of vinegar and water followed by a thorough rinse.- Use liquid soap, a general household cleaner, or a weak solution of vinegar and water for regular cleaning.- Only use plastic scouring pads recommended for use in stainless steel sinks, and only use them in the bowl of the sink. Scrub in the direction of the satin finish lines.
Do not
<ul style="list-style-type: none">- Do not allow any food, detergent, soap or grease to dry or sit for extended periods of time on the surface of the sink.- Never use abrasive cleaning products, as they will dull and scratch the finish.- Do not use scouring pads on the deck, as they will dull the finish.- Never use steel wool pads, as they will leave iron particles on the sink, which will cause corrosion.- Never leave steel or cast iron pans in your sink for extended periods of time, as this can cause corrosion.- Never use chlorine-based cleaners in your new sink, they could lead to rust spots and discolouration. If you must use them, rinse sink thoroughly with fresh water immediately after use. If any chemicals or glue make contact with the sink during installation, wipe clean and rinse thoroughly with fresh water.

CABINET

Do
<ul style="list-style-type: none">- Remove dust and dry dirt with a soft, damp cloth.- Clean grease, oil, paint and ink stains with isopropyl (rubbing alcohol). Immediately rinse with water after stain removal.
Do not
<ul style="list-style-type: none">- Do not allow your cabinet surface to come into contact with products such as acetone (nail polish remover), nail polish, dry cleaning solution, lacquer thinners, gasoline, pine oil, etc.- Use caution when using sharp instruments that may fall and scratch the surface.

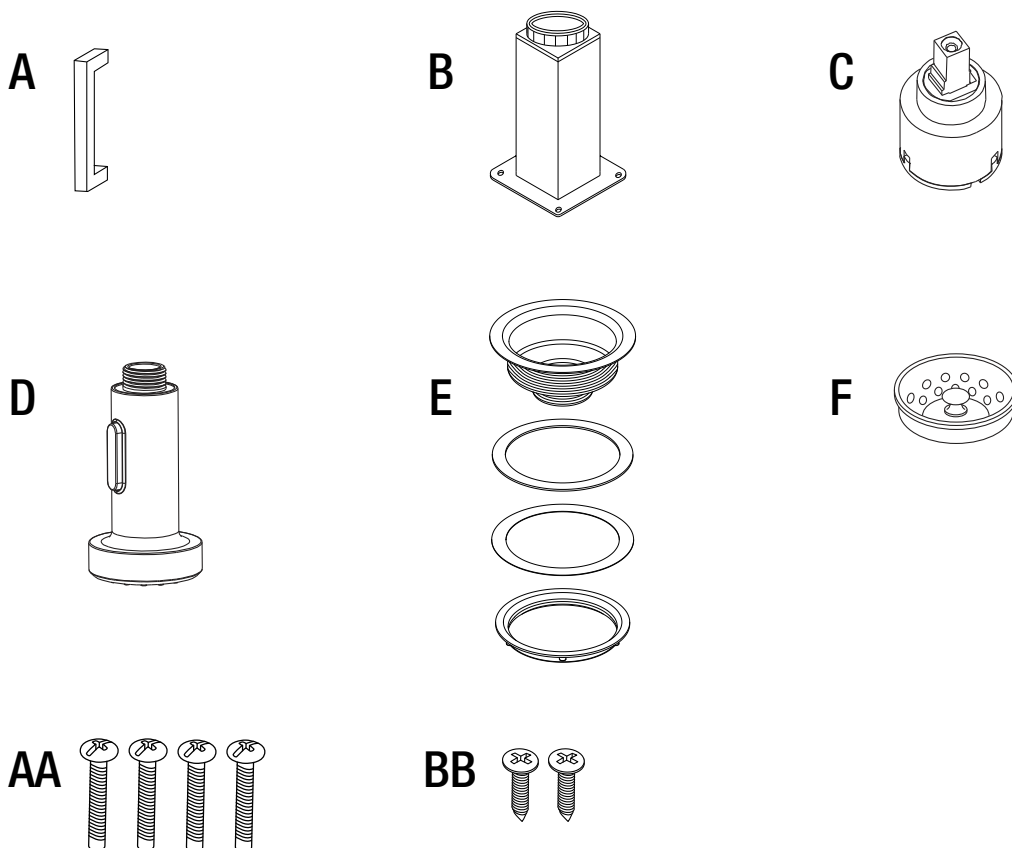
SCRATCH, SPOT, AND BLEMISH REMOVAL AND SURFACE RESTORATION:

Little rust spots and blemishes that periodically appear in the sink are typically the result of the steel interacting with the chemicals found in the vast spectrum of substances that sinks are commonly exposed to. They may also get transferred from other objects placed or left in the sink. Scratches are the result of regular wear and tear.

To remove scratches, spots, and blemishes from the sink, rub them with a non-metallic scouring pad (e.g. Scotch-Brite®) combined with a mild abrasive cleaner (e.g. Vim® or Barkeeper's Friend®). Always rub the surfaces in the direction of the grain of the steel. When finished, rinse the sink with water and dry it with a towel to allow the sink to form a protective outer layer. This procedure can also be used to renew all of the surfaces of the sink.

Service Parts

If you are missing parts or require replacement parts, please contact our customer service team at cs@conglomkb.com or 1-888-449-9194 (Service available in English and French, Monday - Friday from 8:30am - 5pm EST). Identify the required part(s) and have the part number(s) ready.



Part	Description	Code	Quantity
A	Door Handle	QHL133	2
B	Cabinet Legs	QHL139	4
C	Ceramic Cartridge	QHL201	1
D	Sprayer Head	QHL200	1
E	Strainer Assembly	QHS150	1
F	Strainer Basket	QHS101	1
AA	Door Handle Screws	QHL104	4
BB	Cabinet Leg Screws	QHL106	16

Questions, problems, missing pieces?
Before returning to the store, please contact customer service
at *cs@conglomkb.com* from 8:30 am to 5 pm, EST, Monday - Friday

1-888-449-9194

Keep this manual for future use.

