



InstantFit (UL Type-A) T5

24T5HO/46-850/IF35/P/DIM 10/1

MasterClass, LED, T5, 24 W, 5000 K, 3500 lm, 50000 hour(s)

The InstantFit TLED lamps provide hassle-free installation with simple lamp-for-lamp replacements. They deliver what we promise, with at least 40% energy savings, flicker-free performance, and the life you would expect. Other lamps claim compatibility but only InstantFit (UL Type-A) has been proven to work with over 200 ballasts and drivers, delivering even light output, with proven energy savings and a long average lifetime. End users will be delighted being under these comfortable and high quality InstantFit lamps with no visible flicker and optimized optics. Energy managers will enjoy the InstantFit lamps too as they can count the savings delivered by our lamps. To enjoy more energy savings, the InstantFit lamps can be paired with the Advance TLED drivers to create a Type C system.

Product data

General Information		Luminous Efficacy (rated) (Nom)	
Cap-Base	G5	145.00 lm/W	
Nominal lifetime	50,000 hour(s)	Color Consistency	<5
Switching Cycle	50,000	Color rendering index (CRI)	82
Lighting Technology	LED	LLMF At End Of Nominal Lifetime (Nom) 70 %	
Light Technical		Operating and Electrical	
Color Code	850 [CCT of 5000K]	Line Frequency	40000-80000 Hz
Beam Angle (Nom)	140 degree(s)	Input Frequency	40000-80000 Hz
Luminous Flux	3,500 lm	Power Consumption	24 W
Color Designation	Daylight	Lamp Current (Max)	600 mA
Correlated Color Temperature (Nom)	5000 K	Lamp Current (Min)	400 mA
		Wattage Equivalent	54 W

InstantFit (UL Type-A) T5

Starting Time (Nom)	0.5 s
Warm-up time to 60% light	0.5 s
Power Factor (Fraction)	0.9
Voltage (Nom)	39-64 V
UL Type	UL Type A

Temperature

T-Case Maximum (Nom)	113 °F
----------------------	--------

Controls and Dimming

Dimmable	Yes
----------	-----

Mechanical and Housing

Bulb Finish	Frosted
Bulb Material	Plastic
Product Length	47-1/4 inch
Bulb Shape	T5
Net Weight (Piece)	0.375 lb

Approval and Application

Energy Saving Product	Yes
-----------------------	-----

Approval Marks	UL certificate RoHS compliance DLC compliance
Energy Certifications	DLC Standard
EU RoHS compliant	Yes
Ambient temperature range	-4 °F to 113 °F

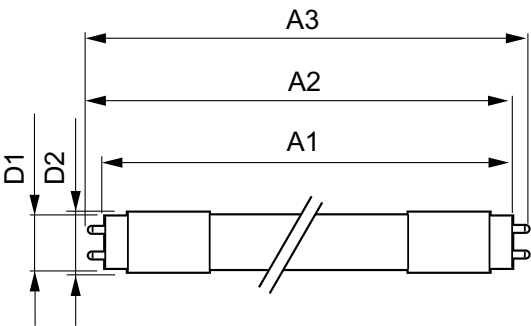
Application Conditions

can it be used in closed luminaires	Yes
-------------------------------------	-----

Product Data

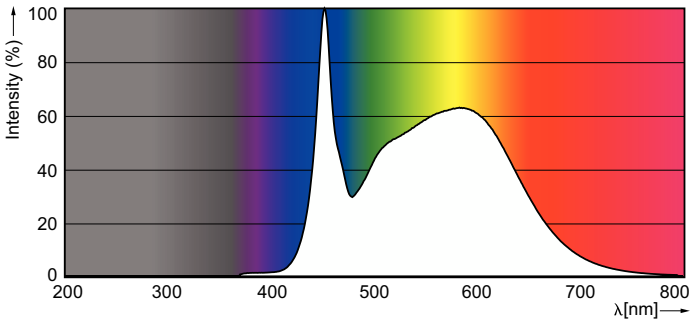
Order product name	24T5HO/46-850/IF35/P/DIM 10/1
Full product name	24T5HO/46-850/IF35/P/DIM 10/1
Order code	467159
Material Nr. (12NC)	929001284004
Numerator - Quantity Per Pack	1
EAN/UPC - Product/Case	046677467159
Numerator - Packs per outer box	10
EAN/UPC - Case	50046677467154

Dimensional drawing

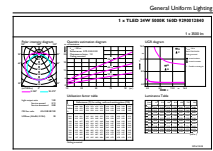


Product	D1	D2	A1	A2	A3
24T5HO/46-850/ IF35/P/DIM 10/1	5/8 inch	3/4 inch	45-3/16 inch	45-1/2 inch	45-3/4 inch

Photometric data



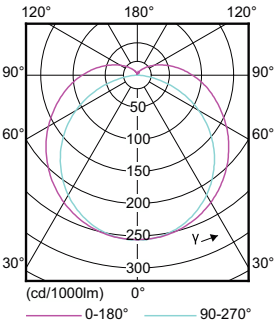
Spectral Power Distribution Colour - 24T5HO/46-850/IF35/P/DIM 10/1



General uniform lighting - 24T5HO/46-850/IF35/P/DIM 10/1

InstantFit (UL Type-A) T5

Photometric data



Light Distribution Diagram - 24T5HO/46-850/1F35/P/DIM 10/1

