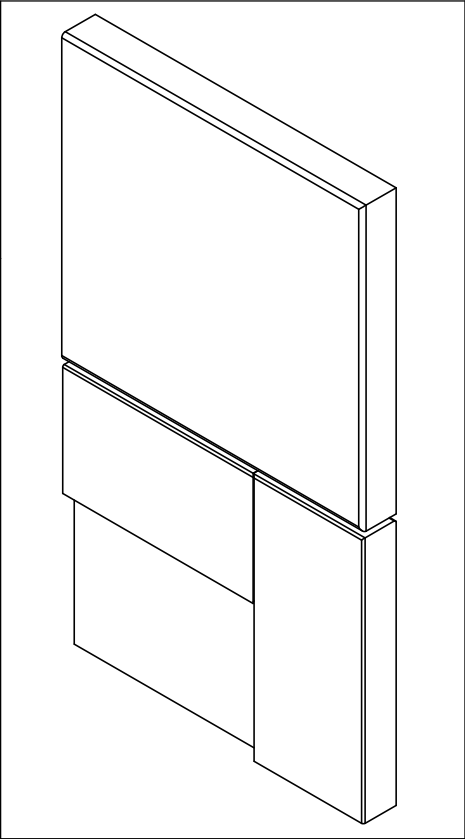
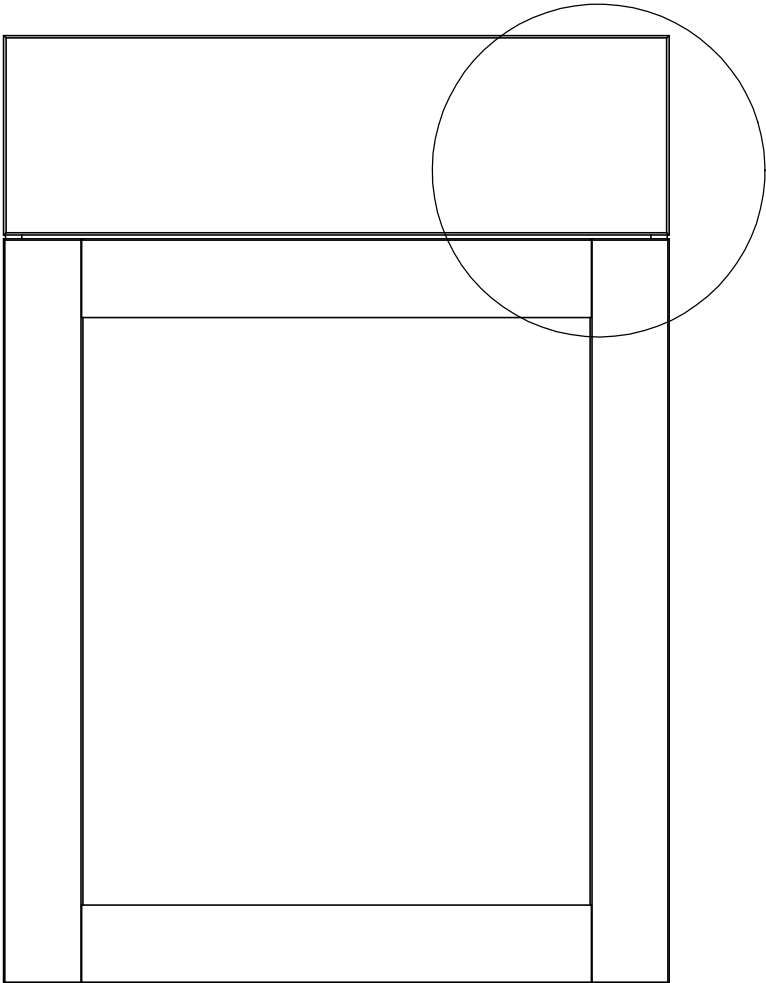



Item ID	Front Thickness [in] mm	Door Thickness [in] mm
CM2135B-DK	[.75] 19	[.75] 19

This profile belongs to CM2135B-DK

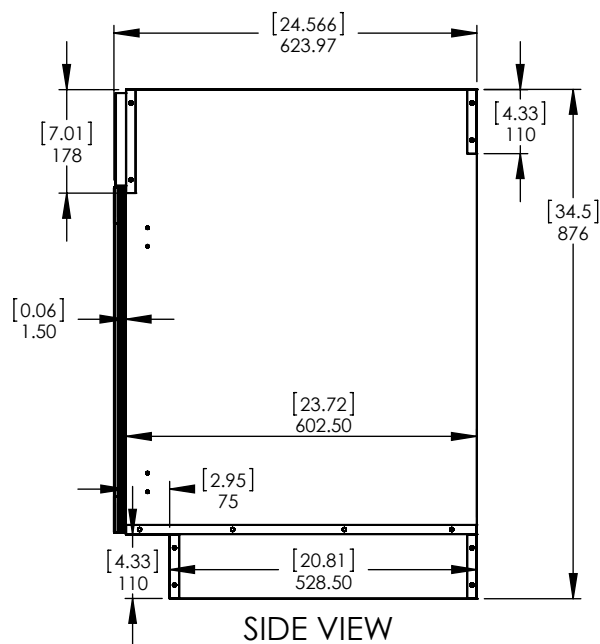


Detailed View

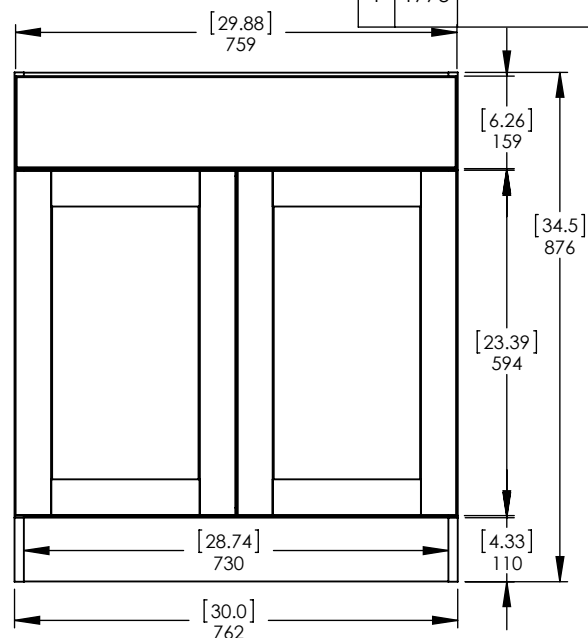
<b>Profile: Cambridge Dusk</b>		
<small>           PROPRIETARY AND CONFIDENTIAL            THE INFORMATION CONTAINED IN THIS DRAWING IS THE SOLE PROPERTY OF WOODCRAFTERS. ANY REPRODUCTION IN PART OR AS A WHOLE WITHOUT THE WRITTEN PERMISSION OF WOODCRAFTERS IS PROHIBITED.         </small>	<small>           UNLESS OTHERWISE SPECIFIED            DIMENSIONS ARE IN MM AND [INCHES]            TOLERANCES ARE            +.039[1]-.039[1]            SCALE:1:2         </small>	

Item ID	Description
CM3035S-DK	Kitchens - Cambridge Sink Base Cabinet with False Drawer Front in Dusk 30in W x 24.625 D x 34.5 H

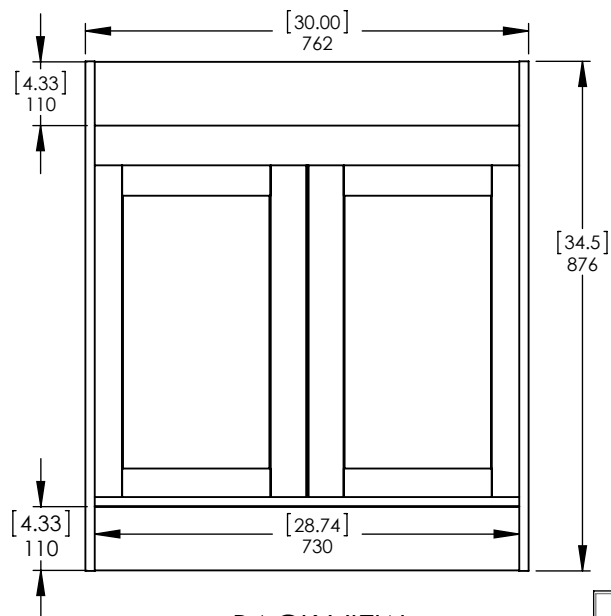
Rev	ECO #	Description	REV'D BY DATE	CHK'D BY DATE	APRV'D BY DATE
0		New Release	KISM 10/10/16	KISM 10/10/16	KISM 10/10/16
1	1773	Change of position on back lower cleat (729mm)	RR 8/29/17	RR 8/29/17	RR 8/29/17



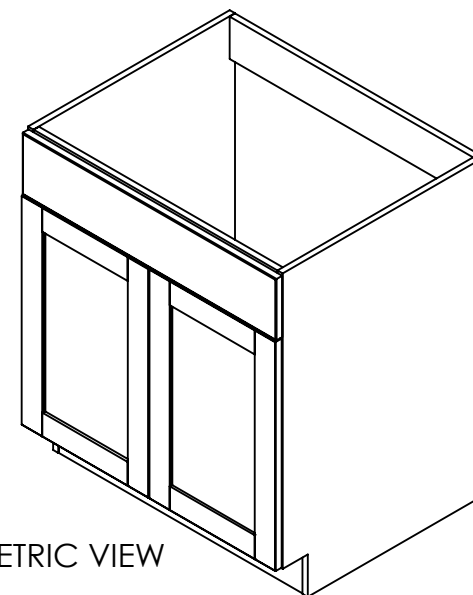
SIDE VIEW



FRONT VIEW



BACK VIEW



ISOMETRIC VIEW

**PROPRIETARY AND CONFIDENTIAL**

THE INFORMATION CONTAINED IN THIS DRAWING IS THE SOLE PROPERTY OF WOODCRAFTERS. ANY REPRODUCTION IN PART OR AS A WHOLE WITHOUT THE WRITTEN PERMISSION OF WOODCRAFTERS IS PROHIBITED.

**UNLESS OTHERWISE SPECIFIED**

DIMENSIONS ARE IN MM. AND [INCHES]

TOLERANCES ARE  
+ 0.039 [1] - 0.039 [1]

SCALE:1:13

	NAME	DATE
DRAWN	Kadir S.	10/3/16
CHECKED	Kadir S.	10/3/16
ENG APPR.	V. Sanchez	



SIZE DWG. NO. **A** Base\_Sink\_Cabinet\_30in

SHEET 1 OF 1

REV: **1**