

Combination Service Entrance Devices

Solar-Ready, Semi flush, Ring Type



APPLICATION

Leviton's Solar-Ready Meter-Load Center Combination Panels, also called "All-in-Ones", are Electric Utility Service Equipment Requirements Committee (EUSERC) and California Title 24¹ compliant.

The panels feature an award-winning installation design that makes them the ideal solution for integrating alternative energy sources into any residential system.

FEATURES AND BENEFITS

- In compliance with standards UL 67, UL 50, UL 50E, UL869A, EUSERC - SEC. 300, NEMA type 3R
- Semi flush, Underground feed/Overhead feed capable²
- 5th jaw accessory available at 9 o'clock or 6 o'clock position
- Factory installed main breaker in main breaker catalogs
- Solar-ready for future installations
- Provision for two field-install CTs
- Powder coated
- Tin Plated Copper bussing on all models for superior quality and conductivity
- Up to 225A bussing for solar photovoltaic (PV) backfeed

THE LEVITON LOAD CENTER ADVANTAGE

Easy Installation

Allows for all wiring at rough-in³, without any circuit breakers present. Our all plug-on design increases efficiency and provides room for hands to move and work freely.

Safer

The only GFCI circuit breaker on the market that exceeds UL requirements⁴ for ground-fault protection, helping to ensure the safety of residents. Other load centers may allow users to reset GFCI circuit breakers leaving them with unprotected power.

Optional Smart

Wi-Fi[®] or Ethernet connection options for remote monitoring, tripping and firmware updates for each circuit in the home.

¹ California Title 24, Section 110.10

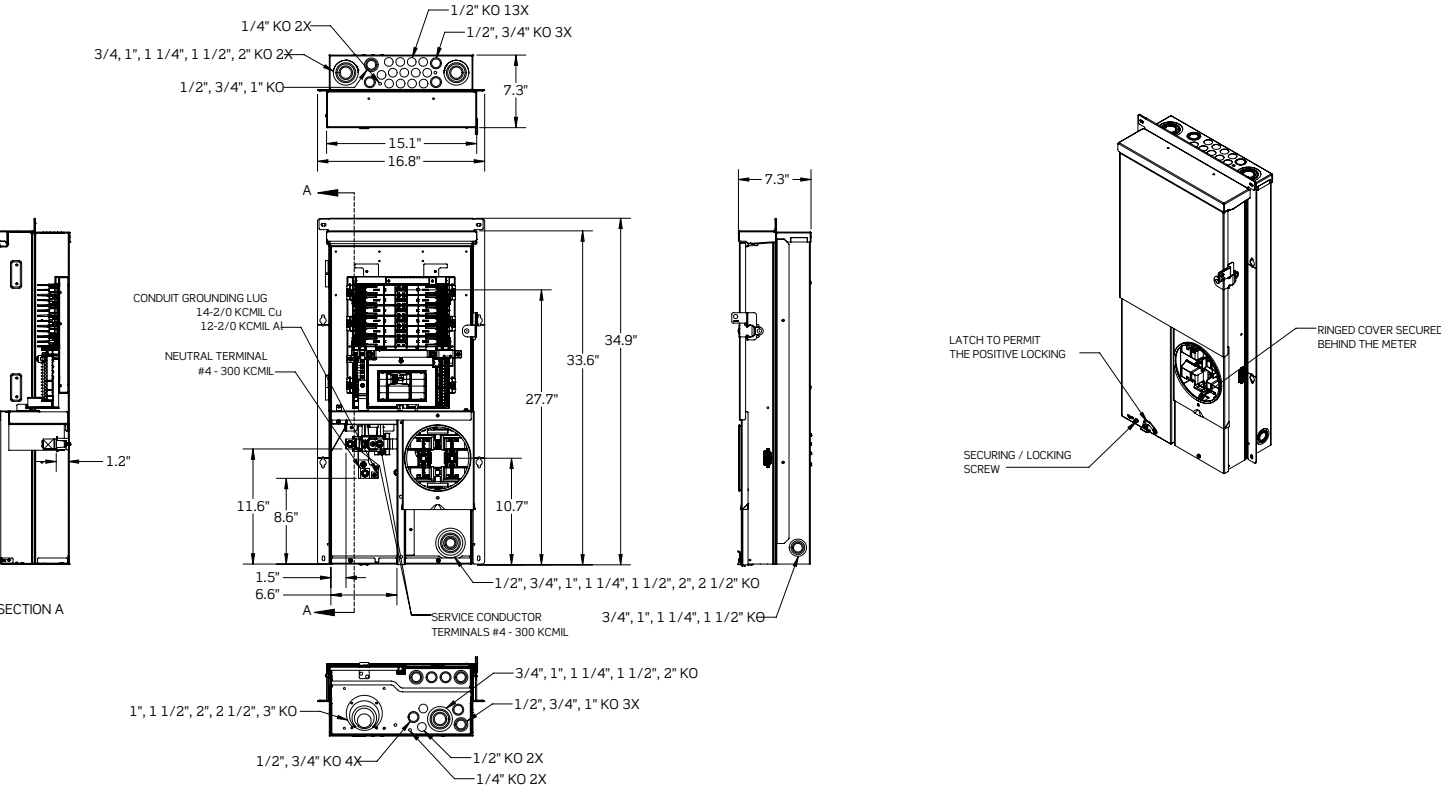
² OH Service Application requires the use of the applicable Overhead Tunnel Kit

³ For applications up to 60A when using copper wire; or 50A when using aluminum wire

⁴ The UL943 standard exempts GFCI circuit breakers from detecting and warning when the trip solenoid and/or switching semiconductor fails in the "open" state, rendering the GFCI circuit breaker incapable of tripping in response to a fault condition, resulting in complete loss of GFCI protection.

PRODUCT SPECIFICATIONS

DIMENSIONAL DRAWINGS



CAT NO LP120-SR

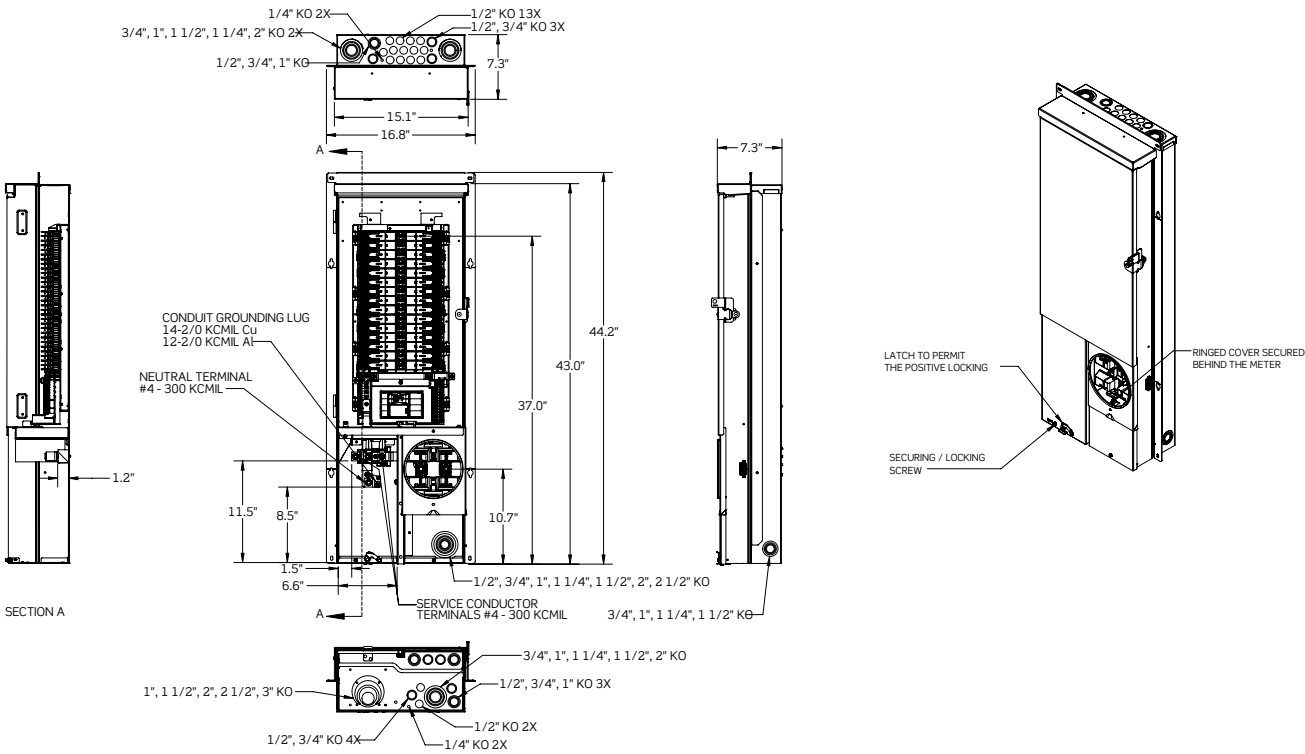
Ordering Information

Maximum Ampacity	Catalog Number	Enclosure Material	Service Application	Phase	Number of Jaws	Types of Bypass	Type of Cover	Opening for Underground Conduit	EUSERC Reference Drawing Number	Number of Branch Breaker Positions
Over/Under Semi-Flush Construction										
125	LP112-SR	Galvanized Steel	UG/OH ²	Single	4	None	Ring Type	3" Maximum	301	12
200	LP120-SR	Galvanized Steel	UG/OH ²	Single	4	None	Ring Type	3" Maximum	301	12
Main Lugs Only										
200	LP120-SRL	Galvanized Steel	UG/OH ²	Single	4	None	Ring Type	3" Maximum	301	12

² OH Service Application requires the use of the Overhead Tunnel Kit (LOTK1)

PRODUCT SPECIFICATIONS

DIMENSIONAL DRAWINGS



CAT NO LP320-SR

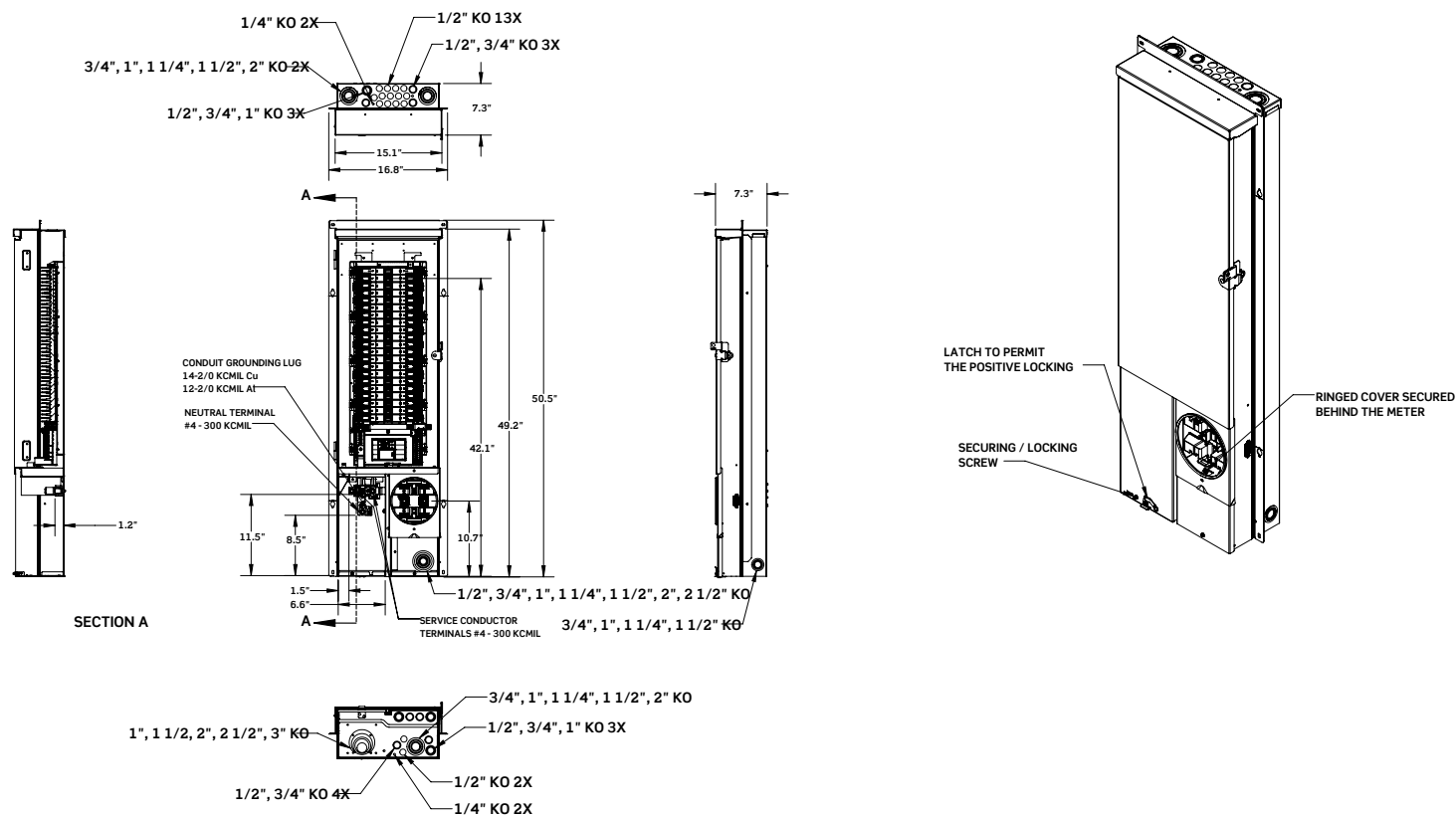
Ordering Information

Maximum Ampacity	Catalog Number	Enclosure Material	Service Application	Phase	Number of Jaws	Types of Bypass	Type of Cover	Opening for Underground Conduit	EUSERC Reference Drawing Number	Number of Branch Breaker Positions
125	LP312-SR	Galvanized Steel	UG/OH ²	Single	4	None	Ring Type	3" Maximum	301	30
200	LP320-SR	Galvanized Steel	UG/OH ²	Single	4	None	Ring Type	3" Maximum	301	30

² OH Service Application requires the use of the Overhead Tunnel Kit (LOT3)

PRODUCT SPECIFICATIONS

DIMENSIONAL DRAWINGS



CAT NO LP420-SR

Ordering Information

Maximum Ampacity	Catalog Number	Enclosure Material	Service Application	Phase	Number of Jaws	Types of Bypass	Type of Cover	Opening for Underground Conduit	EUSERC Reference Drawing Number	Number of Branch Breaker Positions
200	LP420-SR	Galvanized Steel	UG/OH ²	Single	4	None	Ring Type	3" Maximum	301	40
225	LP422-SR	Galvanized Steel	UG/OH ²	Single	4	None	Ring Type	3" Maximum	301	40

² OH Service Application requires the use of the Overhead Tunnel Kit (LOT4)



Leviton Manufacturing Co., Inc.

201 North Service Road, Melville, NY 11747-3138
 Telephone: 1-800-323-8920 • FAX: 1-800-832-9538
 Tech Line: 1-800-824-3005
 Mon-Fri 8am-10pm EST, Saturday 9am-7pm EST

Visit our Website at: www.leviton.com/loadcenter

© 2020 Leviton Manufacturing Co., Inc. All rights reserved.