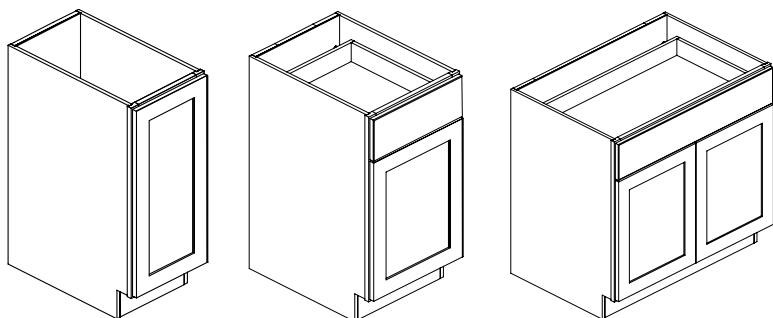


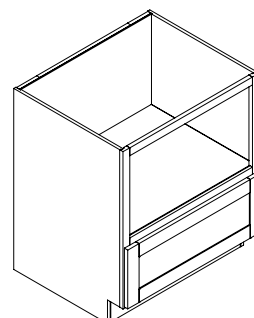
HAMPTON BAY[®]

USE AND CARE GUIDE

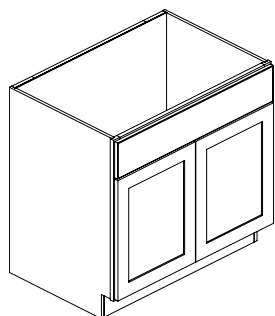
STANDARD BASE CABINETS



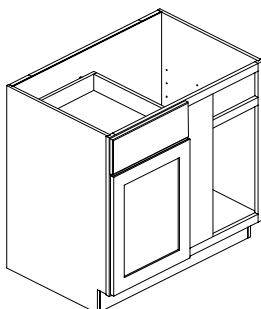
MICROWAVE BASE CABINET



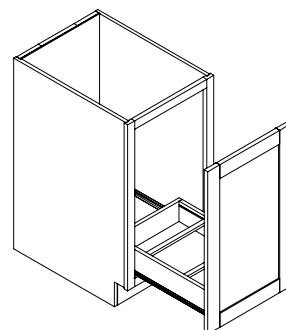
SINK BASE CABINET



BLIND BASE CABINET



TRASH CAN



Questions, problems, missing parts? Before returning to the store,
call Hampton Bay Customer Service
8 a.m. – 7 p.m., EST, Monday – Friday, 9 a.m. – 6 p.m., EST, Saturdays

1-855-HD-HAMPTON
HAMPTONBAY.COM

THANK YOU

We appreciate the trust and confidence you have placed in Hampton Bay through the purchase of this Cabinet. We strive to continually create quality products designed to enhance your home. Visit us online to see our full line of products available for your home improvement needs. Thank you for choosing Hampton Bay!

Table of Contents

Table of Contents2

Safety Information.....2

 CALIFORNIA RESIDENTS.....2

 MINNESOTA RESIDENTS2

Warranty2

Introduction to CLICKREADY Technology3

Pre-Assembly4

 BEFORE YOU BEGIN.....4

 PEOPLE REQUIRED4

 TOOLS REQUIRED4

 HARDWARE INCLUDED4

Pre-Assembly5

 PACKAGE CONTENTS.....5

Pre-Assembly 6

 PACKAGE CONTENTS (CONTINUED).....6

Cabinet Assembly 7

Cabinet Assembly (Continued) 9

Drawer Assembly 11

Cabinet Assembly (Continued) 13

Before Putting in Use 17

Blind Base Cabinet Installation 18

Care and Cleaning 18

Safety Information

Please read and understand these instructions before you begin this assembly.

CALIFORNIA RESIDENTS



WARNING: This product can expose you to chemicals including Formaldehyde (GAS), which is [are] known to the State of California to cause cancer. For more information go to WWW.P65Warnings.ca.gov/products.

MINNESOTA RESIDENTS

IMPORTANT HEALTH NOTICE

SOME OF THE BUILDING MATERIALS USED IN THIS HOME (OR THESE BUILDING MATERIALS) EMIT FORMALDEHYDE. EYE, NOSE, AND THROAT IRRITATION, HEADACHE, NAUSEA AND A VARIETY OF ASTHMA-LIKE SYMPTOMS, INCLUDING SHORTNESS OF BREATH, HAVE BEEN REPORTED AS A RESULT OF FORMALDEHYDE EXPOSURE. ELDERLY PERSONS AND YOUNG CHILDREN, AS WELL AS ANYONE WITH A HISTORY OF ASTHMA, ALLERGIES, OR LUNG PROBLEMS, MAY BE AT GREATER RISK. RESEARCH IS CONTINUING ON THE POSSIBLE LONG-TERM EFFECTS OF EXPOSURE TO FORMALDEHYDE.

REDUCE VENTILATION MAY ALLOW FORMALDEHYDE AND OTHER CONTAMINANTS TO ACCUMULATE IN THE INDOOR AIR. HIGH INDOOR TEMPERATURES AND HUMIDITY RAISE FORMALDEHYDE LEVELS. WHEN A HOME IS TO BE LOCATED IN AREAS SUBJECT TO EXTREME SUMMER TEMPERATURES, AN AIR-CONDITIONING SYSTEM CAN BE USED TO CONTROL INDOOR TEMPERATURE LEVELS. OTHER MEANS OF CONTROLLED MECHANICAL VENTILATION CAN BE USED TO REDUCE LEVELS OF FORMALDEHYDE AND OTHER INDOOR AIR CONTAMINANTS.

IF YOU HAVE ANY QUESTIONS REGARDING THE HEALTH EFFECTS OF FORMALDEHYDE, CONSULT YOUR DOCTOR OR LOCAL HEALTH DEPARTMENT.

Warranty

Contact the Customer Service Team at 1-855-HD-HAMPTON or visit [www. Hamptonbay.com](http://www.Hamptonbay.com).

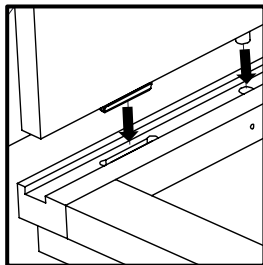
CLICK READY™ 101

Introduction to **CLICKREADY** Technology

Powered by **OVVO**

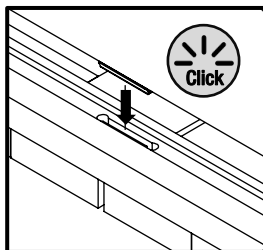


This cabinet uses **PERMANENT** Ready to Assemble (RTA) technology that **CANNOT** be disassembled. You must carefully review instructions and ensure proper alignment during assembly.



All connectors and dowels must line up when assembling cabinet.

Quantity of connectors/dowels depends on the cabinet type and size.



There will be a “clicking” sound when the connectors lock together properly.

BEFORE INSTALLATION, ENSURE ALL CONNECTORS ARE LOCKED IN PLACE AND SEATED.

Pre-Assembly

BEFORE YOU BEGIN

Compare all parts with the Hardware Included and Package Contents sections. If any part is missing or damaged, do not assemble this product. Contact Customer Service.

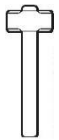
Assemble the cabinet on a soft surface such as carpet or the cardboard container of this product.

PEOPLE REQUIRED

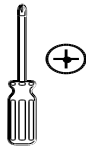


BASE CABINETS with a width greater than or equal to 27" , CORNER WALL CABINET, LAZY SUSAN CABINET, PANTRY, OVEN CABINET require two people to assemble.

TOOLS REQUIRED



Rubber
mallet

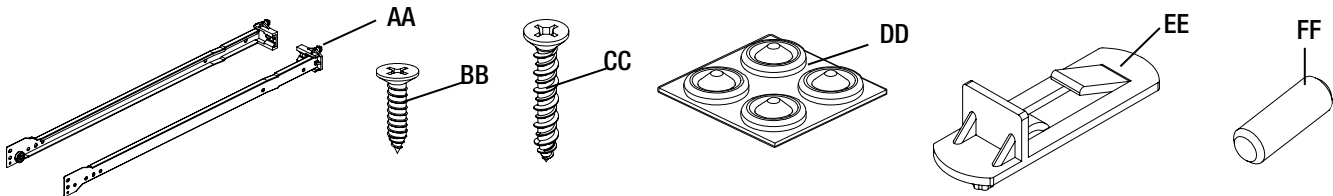


Phillips
screwdriver

HARDWARE INCLUDED



NOTE: Hardware not shown to actual size.



* *Extras quantity is provided based upon your cabinet size/type*

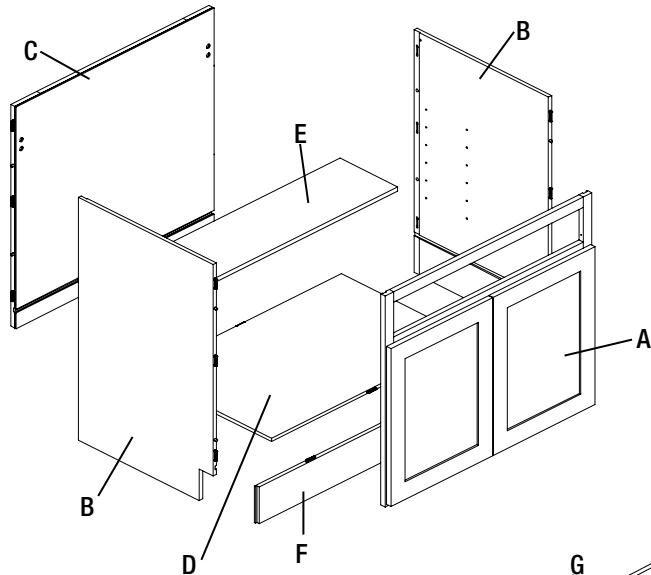
* *9 in. Base cabinets do not have a drawer.*

Part	Description	Qty. (Vanity) Sink Base	Qty. Standard Base, Blind Base	Qty. Microwave Base	Qty. Trash can
AA	Cabinet Glides	0	1	1	1
BB	M4 x 15 mm Screws (silver)	0	2	2	2
CC	#8 x 1 in. Screws (yellow)	0	4	4	8
DD	Silicone Pads	4	6-8	4	4
EE	Shelf Pin	0	4	0	0
FF	Wooden dowel	2	2	2	2

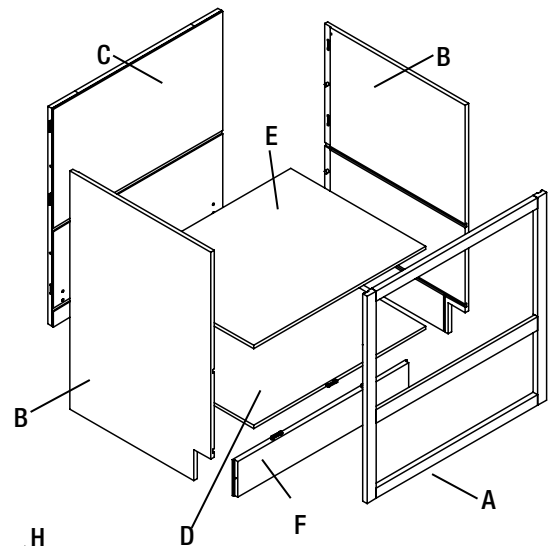
Pre-Assembly

PACKAGE CONTENTS

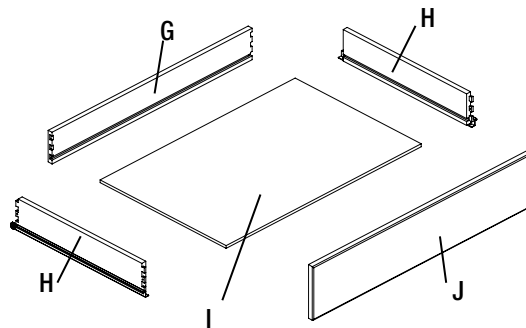
STANDARD/BLIND/SINK BASE CABINET CABINET



MICROWAVE BASE CABINET CABINET



DRAWER



Part	Description	Qty. Sink Base, Vanity Sink Base	Qty. Standard Base, Blind Base	Qty. Microwave Base
CABINET				
A	Face Frame and Doors	1	1	1
B	Side Panel	2	2	2
C	Back Frame	1	1	1
D	Bottom Panel	1	1	1
E	Shelf/Support shelf	0	1	1
F	Toe Kick	1	1	1

**** Sink base, Vanity sink base has no shelf.**

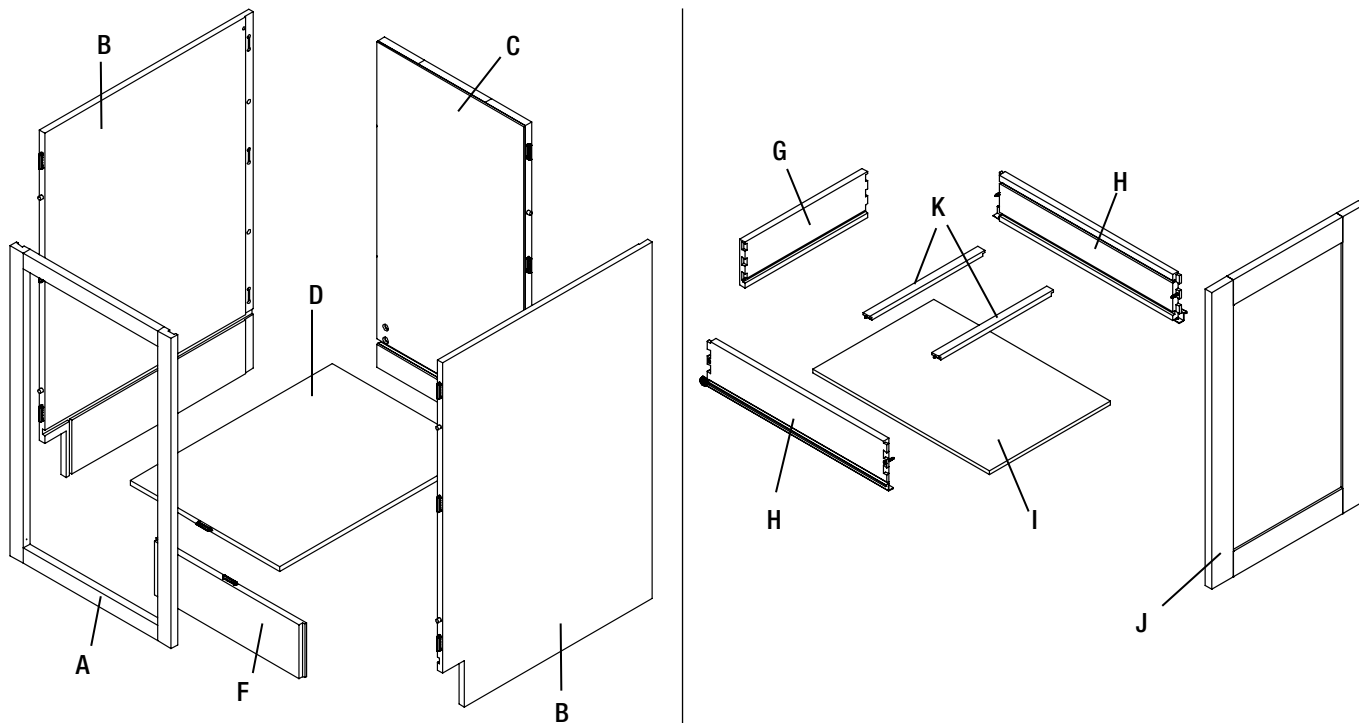
DRAWER				
G	Drawer Back	0	1	1
H	Drawer Side	0	2	2
I	Drawer Bottom	0	1	1
J	Drawer Front	0	1	1

*** 9 in. Base cabinets, Sink base, Vanity sink base do not have a drawer.**

Pre-Assembly

PACKAGE CONTENTS (CONTINUED)

TRASH CAN



Part	Description	Single trash can
CABINET		
A	Face Frame	1
B	Side Panel	2
C	Back Panel	1
D	Bottom Panel	1
E	Shelf/Support shelf	0
F	Toe Kick	1
DRAWER		
G	Drawer Back	1
H	Drawer Sides	2
I	Drawer Bottom	1
J	Drawer Front	1
K	Bin holders	2

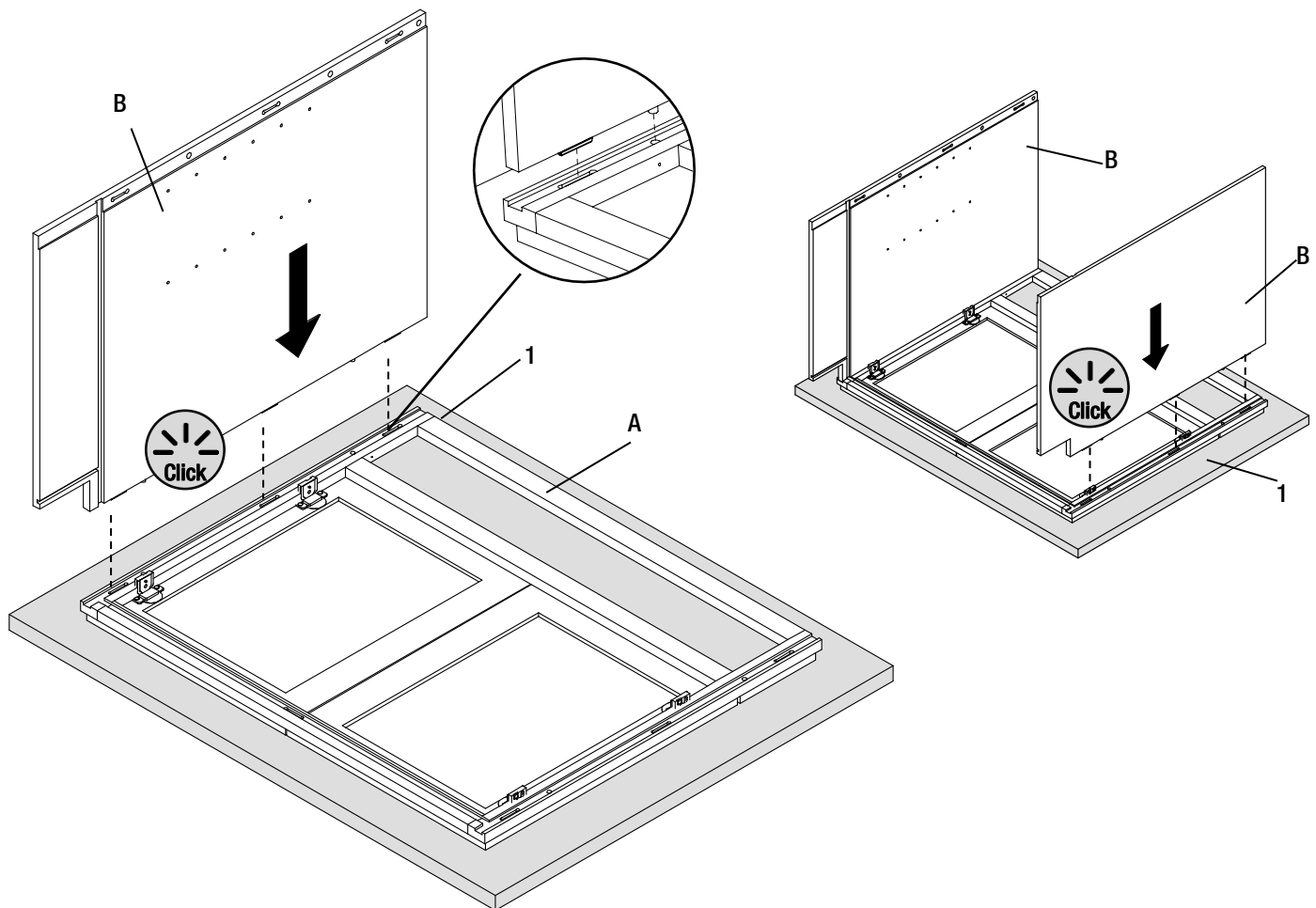
Cabinet Assembly

1 Attaching the side panels into the face frame

- Start by placing the face frame (A) flat on a smooth surface that will not scratch or damage the face of the cabinet, such as a towel or piece of cardboard (1) from the packaging.
- Install the two side panels (B) into the mating grooves on the face frame (A) by: aligning the wooden dowels & male connectors on side panel (B) to the holes & female connectors on face frame (A).
- Use both hands to firmly press the side panels (B) down at all locations with connectors to ensure they lock together tightly.



IMPORTANT: There will be a “clicking” sound when the connectors lock together properly.



Cabinet Assembly

2 Attaching the bottom panel for all cabinets and attaching support shelf for Microwave Base only.

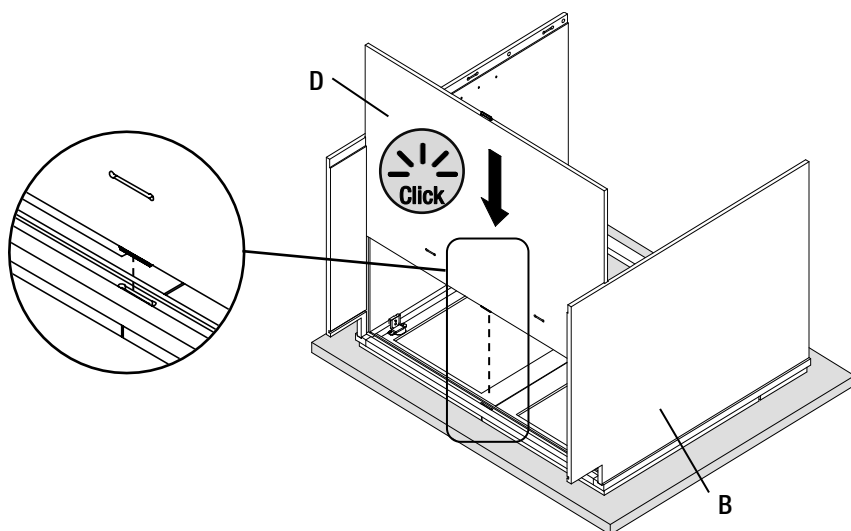
- Slide the bottom panel (D) (*and support shelf (E) for Microwave cabinet only) into grooves in the sides (B). Use both hands to firmly press the panel (D) down at all locations with connectors to ensure they lock together tightly.



NOTE:

- Make sure the female connector at the bottom panel (D) is facing out.
- (D) has the connectors on panel while (E) has no connector.

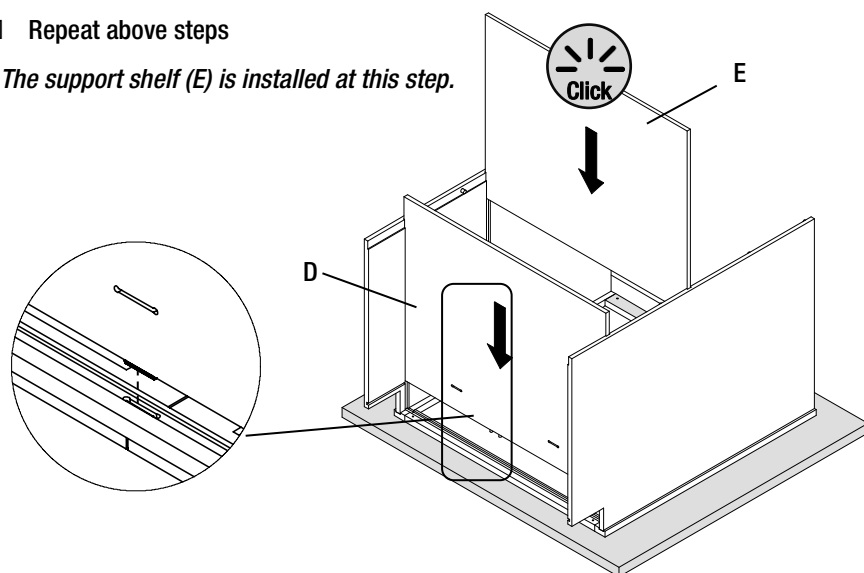
STANDARD/BLIND/SINK BASE CABINET/TRASH CAN


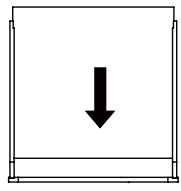
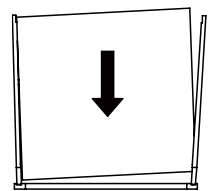


MICROWAVE BASE CABINET ONLY

- Repeat above steps

* The support shelf (E) is installed at this step.



 SLIDING PANEL	
The bottom (top/middle) panel slides vertically.	The bottom (top/middle) panel slides unevenly and tilting.
	
✓ RIGHT	✗ WRONG

Cabinet Assembly (Continued)

3 Attaching the back panel to the bottom panel/support shelf

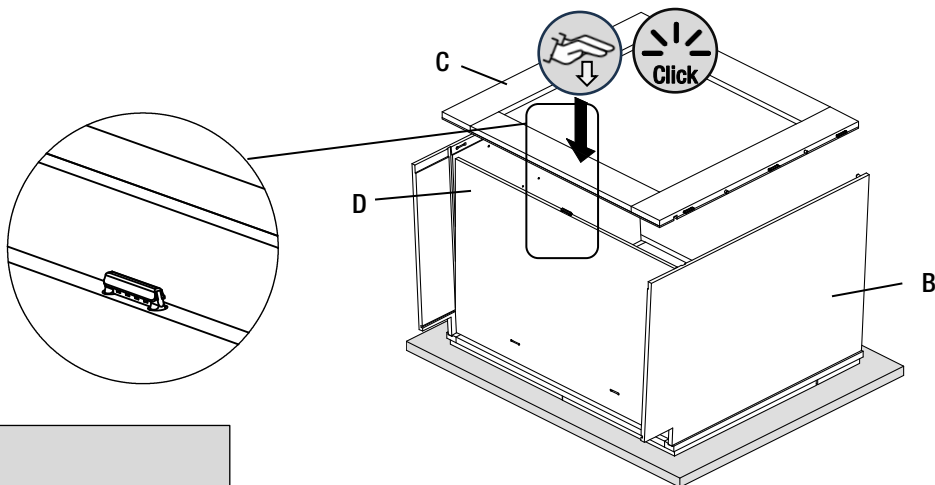
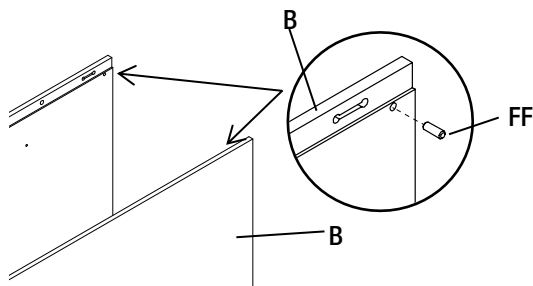
STANDARD/BLIND/SINK BASE CABINET/TRASH CAN

- ☐ Install the Wooden dowels (FF) into the pre-drilled hole in side panels (B) as shown. It helps hold the other end on the back panel. *It can be removed after assembly is completed.*



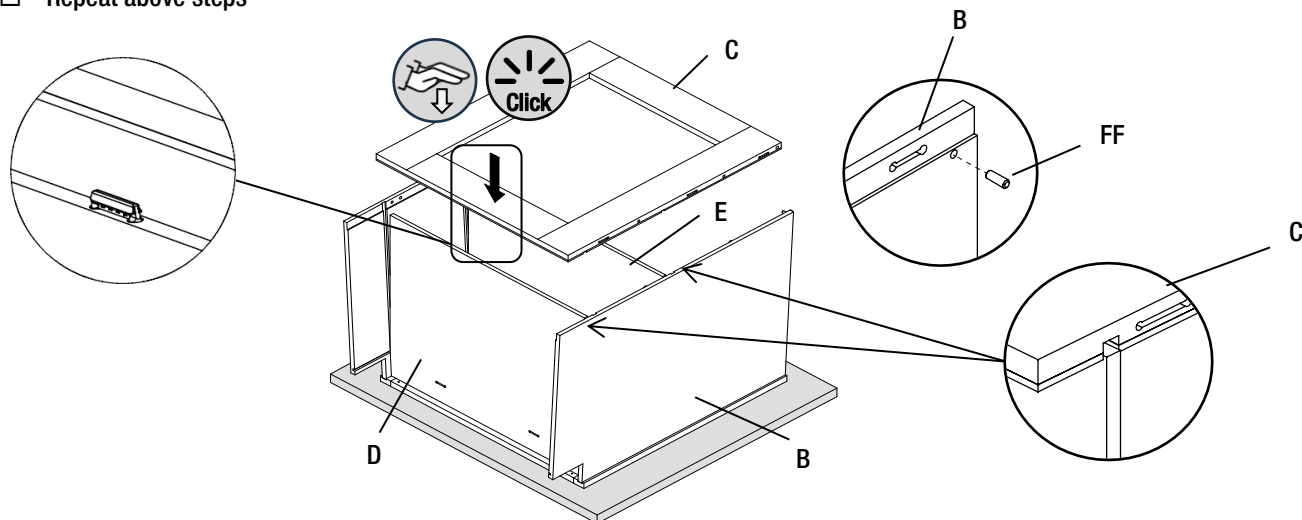
NOTE: 9" Base cabinet doesn't need the wooden dowels, you can skip above step

- ☐ Flex outwards 2 side panels (B) slightly then place mating groove on the back panel (C) to the bottom panel (D) (*and support shelf (E) only for Microwave Base only*) as shown.
- ☐ Aligning the female connectors on back panel (C) to the male connectors on bottom panels (D).
- ☐ Use both hands to firmly press the back panel (C) down at all locations with connectors to ensure they lock together tightly.



MICROWAVE BASE CABINET ONLY

- ☐ Repeat above steps



Cabinet Assembly (Continued)

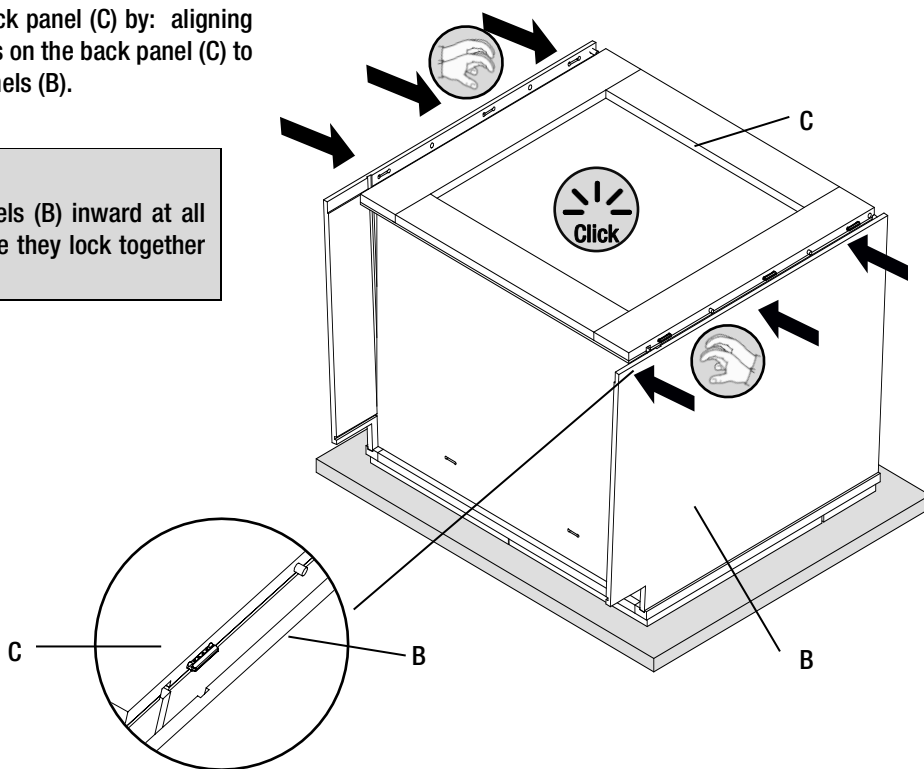
4 Attaching the side panels to bottom panel.

- Install the two side panels (B) to the back panel (C) by: aligning the wooden dowels & female connectors on the back panel (C) to the holes & male connectors on side panels (B).



IMPORTANT

Use hands to grab the 2 side panels (B) inward at all locations with connectors to ensure they lock together with (C) tightly.

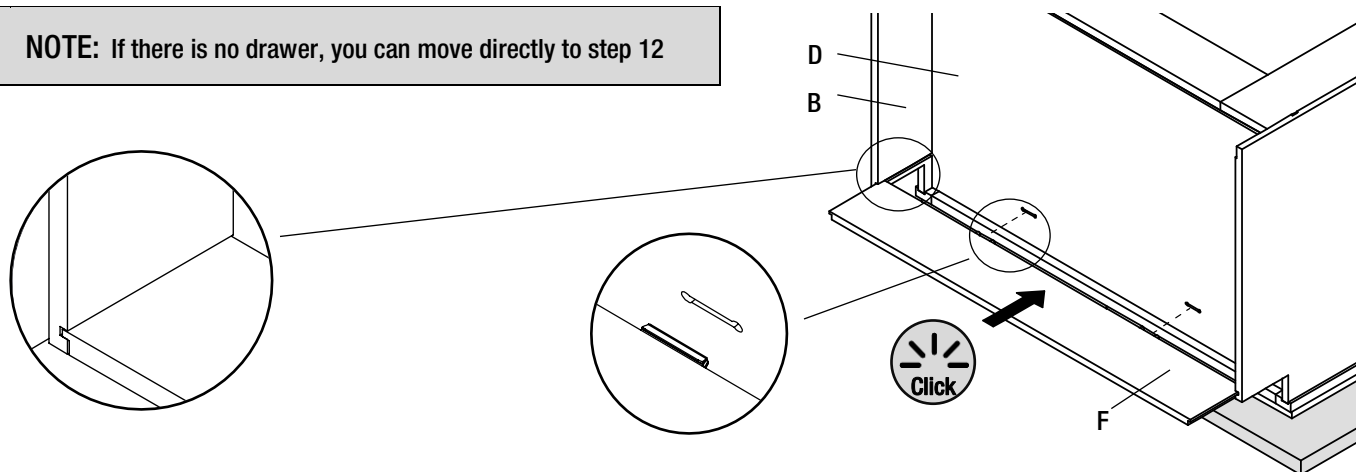


5 Attaching the toe kick

- Slide the toe kick (F) into grooves in sides (B), make sure the male connector on toe kick (F) is aligned with female connector on the bottom panel (D).
- Use both hands to firmly press toe kick (F) to ensure connectors they lock together tightly.





NOTE: If there is no drawer, you can move directly to step 12

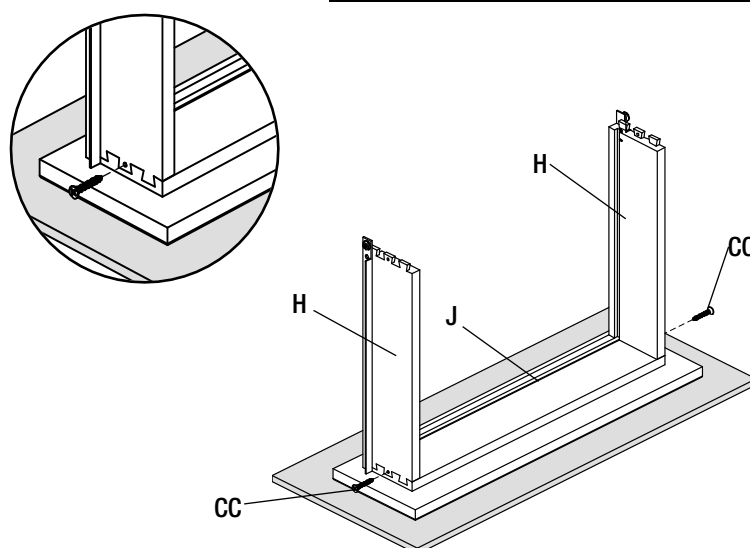
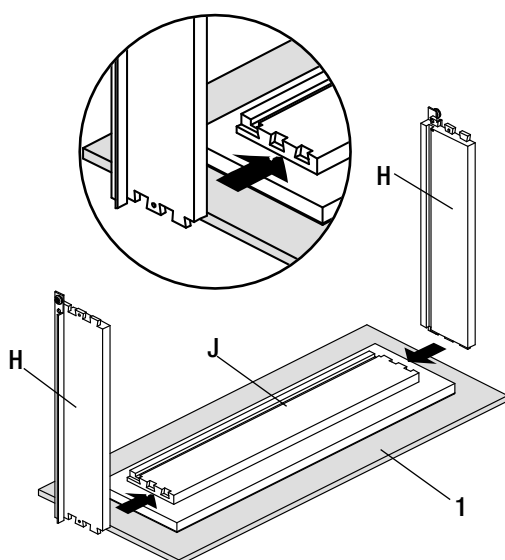


Drawer Assembly

6 Attaching the drawer sides

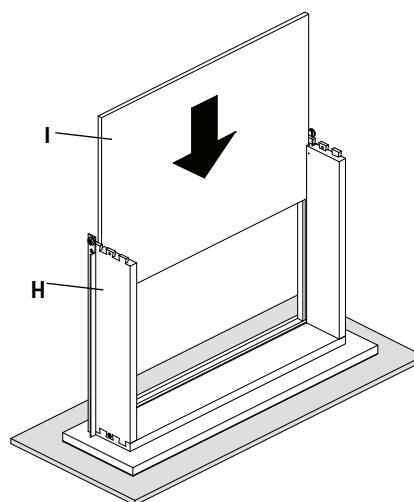
- ☐ Place the drawer front (J) face down on a smooth surface that will not scratch or damage the face of the drawer, such as a towel or piece of cardboard (1) from the packaging.
- ☐ Use a rubber mallet to tap the drawer sides (H) into place on the drawer front (J).
- ☐ Insert a screw (CC) into the countersunk holes on each side, and partially tighten.

⚠ WHICH SCREW ?	
	
CC- #8 x 1 in. Screws (yellow)	BB- M4 x 15 mm (silver)
✓ RIGHT	✗ WRONG



7 Attaching the drawer bottom

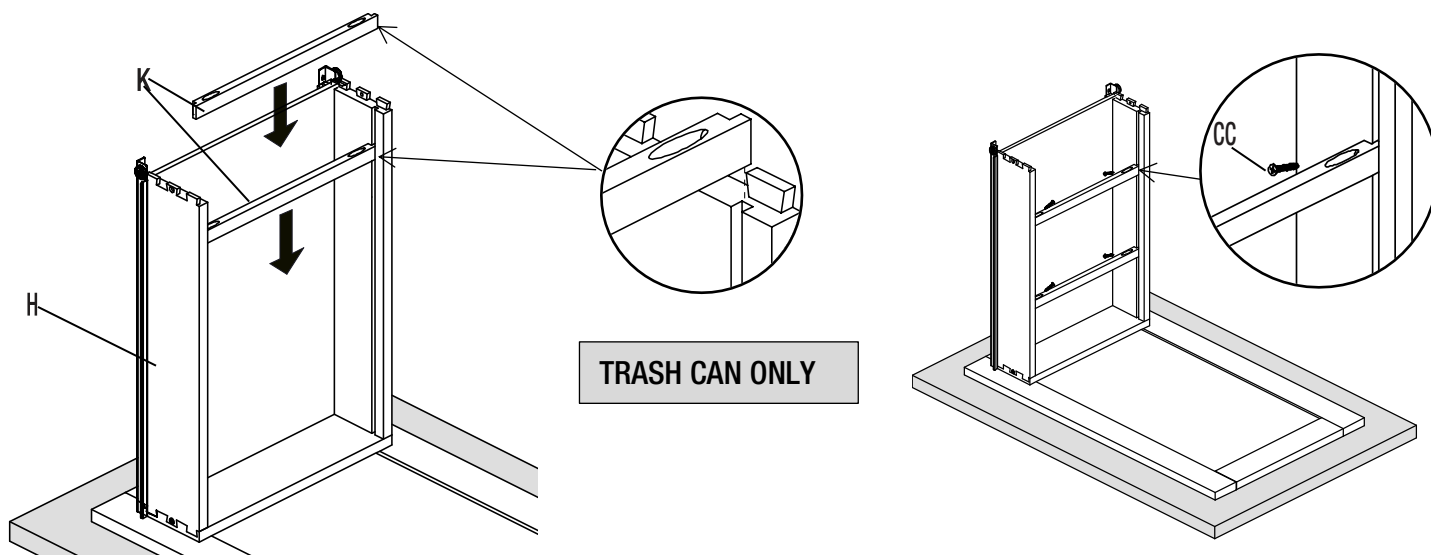
- ☐ Slide the drawer bottoms (I) into the grooves on the sides of the drawer assembly.



Drawer Assembly

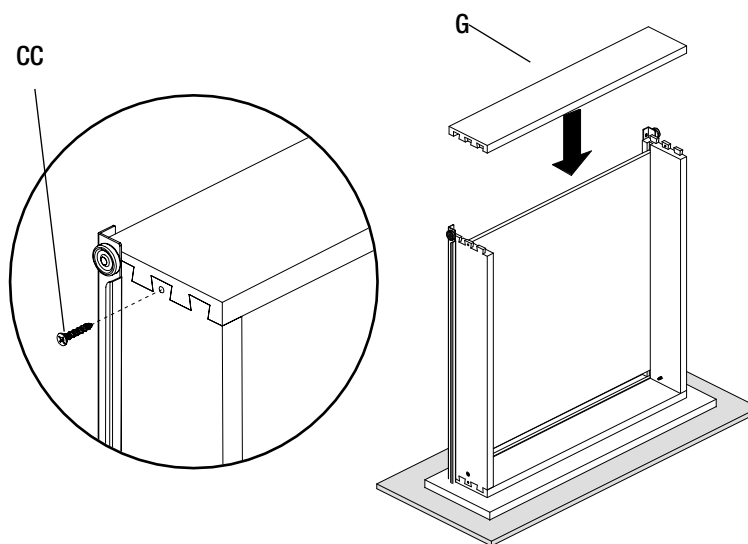
8 Attaching the Bin holder (For trash can only)

- ☐ Slide Bin holders (K) into grooves on the drawer sides (H).
- ☐ Align Bin holders' position to desired trash can location. Secure 2 Bin holders with sides by 4 screws (CC)



9 Attaching the drawer back (For all cabinet)

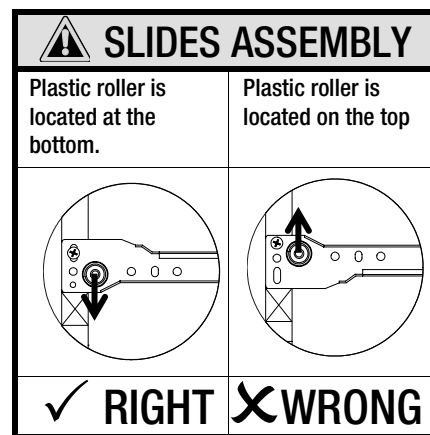
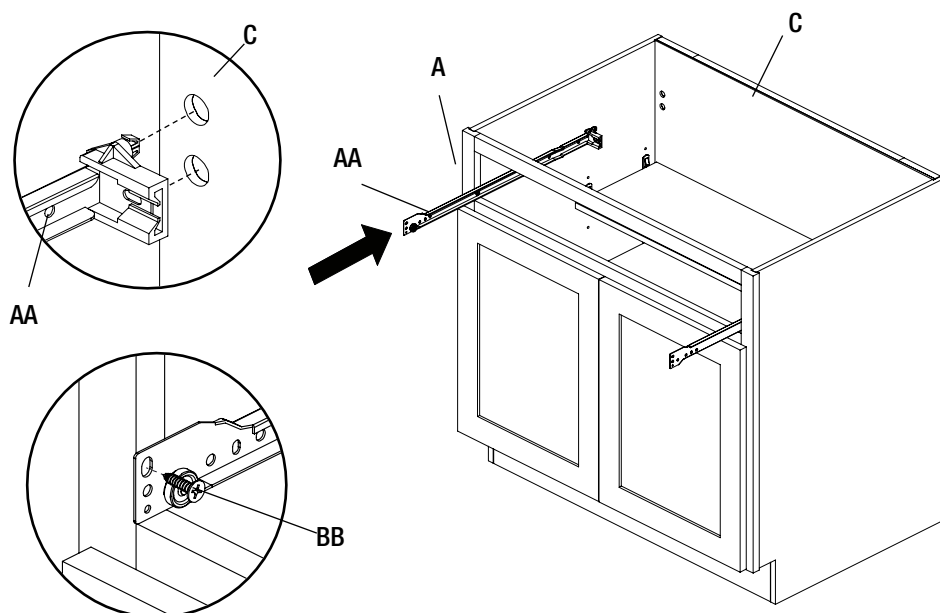
- ☐ Use a rubber mallet to tap the drawer back (G) into place. To fit the drawer back on, drawer sides will have to flex outwards slightly.
- ☐ Insert two more screws (CC) into the countersunk holes on each side. Fully tighten all four screws.



Cabinet Assembly (Continued)

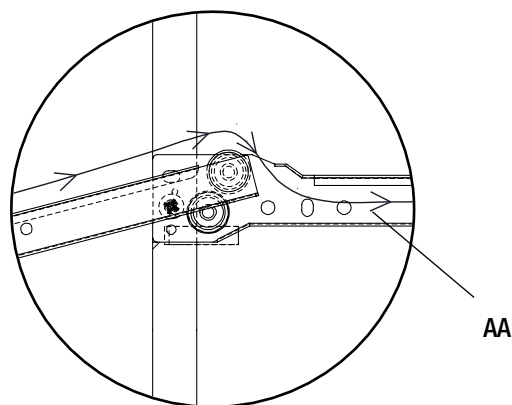
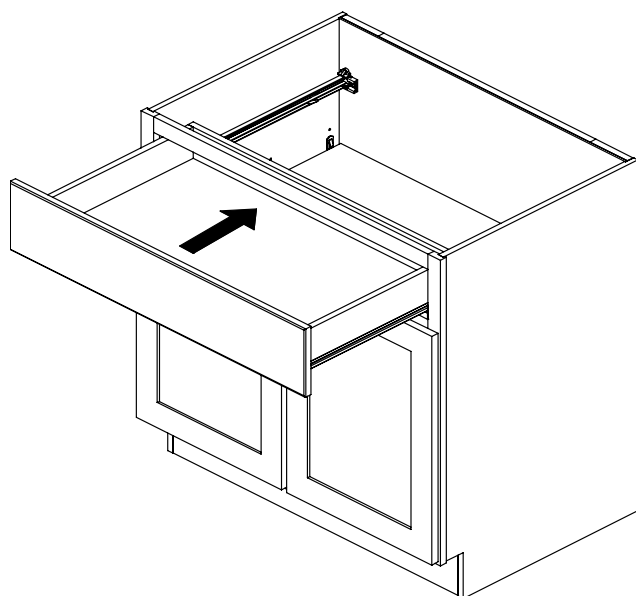
10 Attaching the cabinet glides

- Install the cabinet slides (AA) into the pre-drilled hole on the back panel (C) and secure with screws (BB) to the pre-drill hole on face frame (A)



11 Installing/Removing the drawer

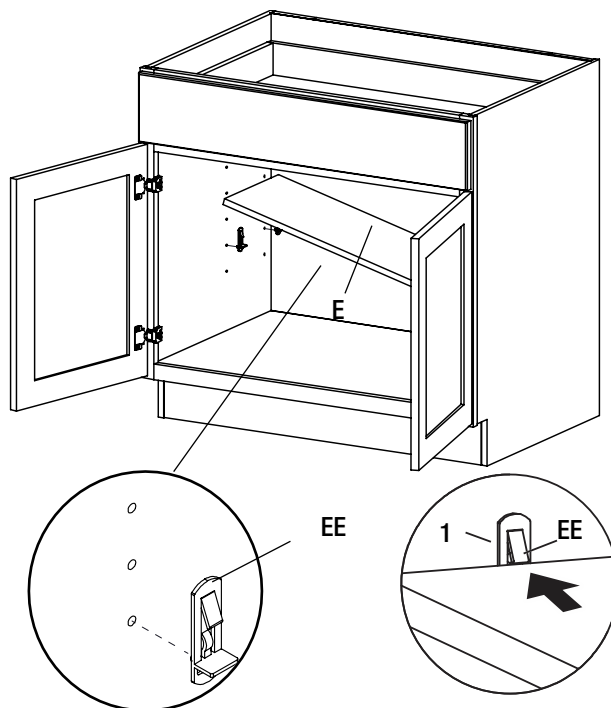
- Align the drawer slides with the slides on cabinet (AA) then slide in the direction of the arrow into position.
- Do it in the opposite direction of the arrow to remove the drawer.



Cabinet Assembly (Continued)

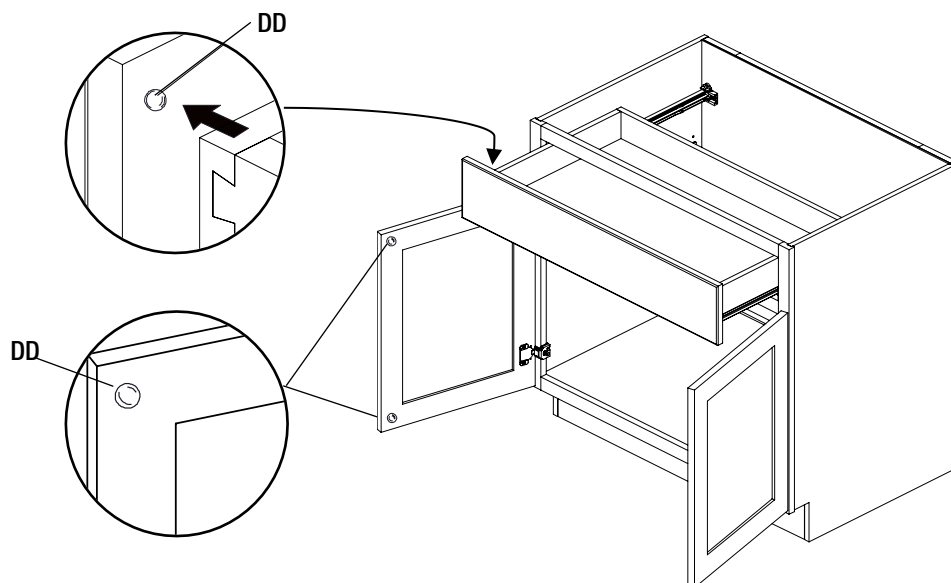
12 Installing the shelves

- ☐ Insert the shelf pins with pre-drilled holes on each side panel.
- ☐ Tilt the shelf (E) to fit inside the face frame and snap over the shelf pins (EE).
- ☐ To remove the shelf, push the tabs (1) on the shelf pins and lift the shelf.



13 Attaching silicone pads

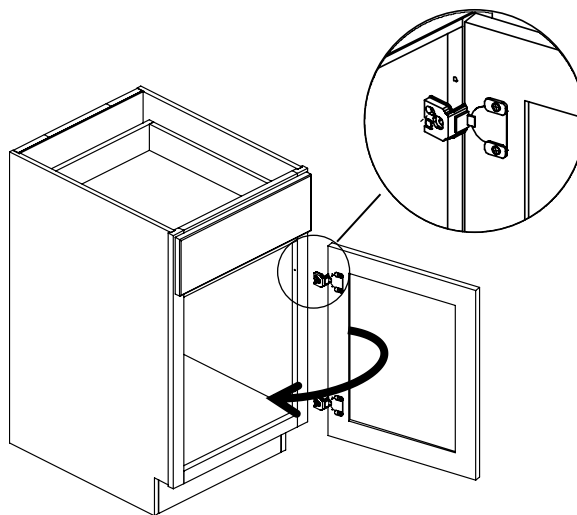
- ☐ Peel and stick 2 silicone pads (DD) onto the inside corners of each door and 4 silicone pads (DD) onto the inside corners of each drawer.



Cabinet Assembly (Continued)

14 (OPTIONAL) Reversing the door position.

- ☐ You can remove and reposition the door to the other side of the face frame at any time using the pre-drilled holes. For pre-drilled holes that are not used, you can cover them up using a wax pencil or touch-up paint pen.



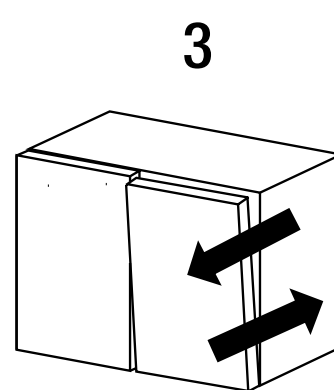
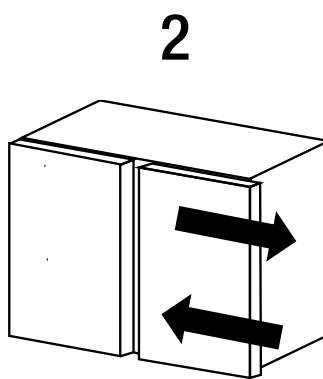
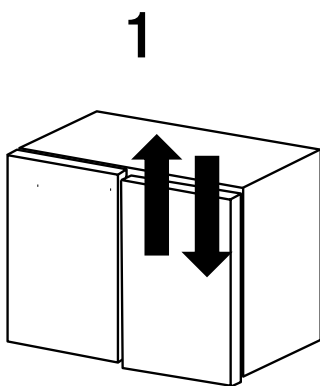
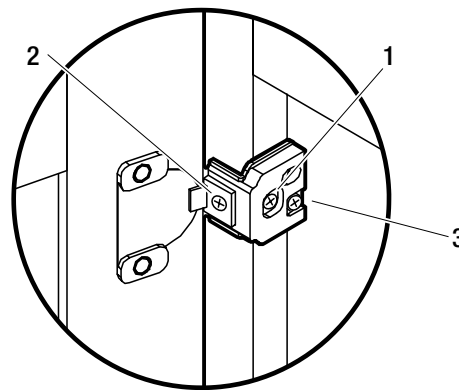
15 (OPTIONAL) Adjusting the door.

- ☐ Door hinges are 6-way adjustable.
- ☐ Up or down adjustment – Loosen screw 1, align the door, and tighten screw 1.



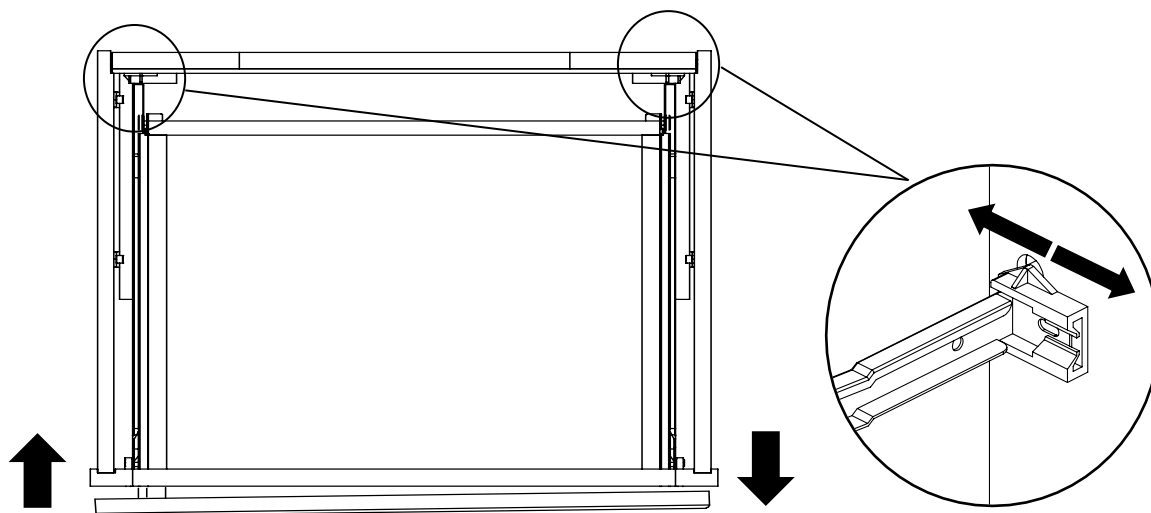
NOTE: It is critical that you do NOT overtighten screw 1.

- ☐ Left or right adjustment – Turn screw 2 clockwise or counterclockwise.
- ☐ In or out adjustment – Turn screw 3 clockwise or counterclockwise.

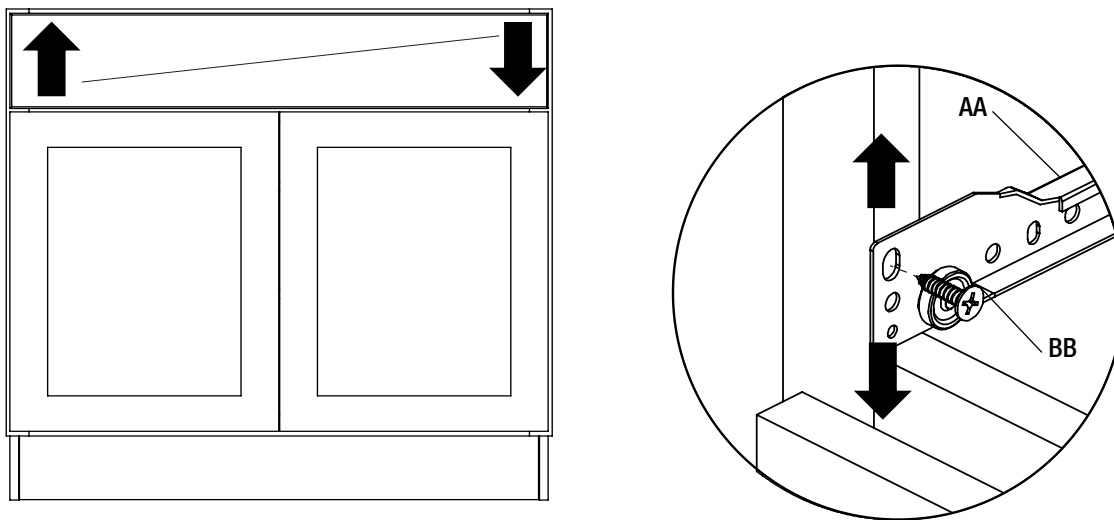


16 (OPTIONAL) Adjusting the drawer face.

- Adjust the drawer face in/out by shifting the Cabinet Glides (AA) to the left or right as shown.



- Adjust the drawer face up or down by loosening the screw (BB) and shifting the Cabinet Glides (AA) upward/downward, then secure it back in place by tightening the screw (BB) as shown.



Before Putting in Use

1 Check before putting in use

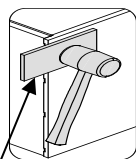


IMPORTANT:

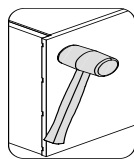
- Before putting in use, use a rubber mallet and wooden pad to tap all locations with connectors to ensure they lock together tightly.
- The wooden pad helps avoid damaging the product.



CONNECTION CHECK



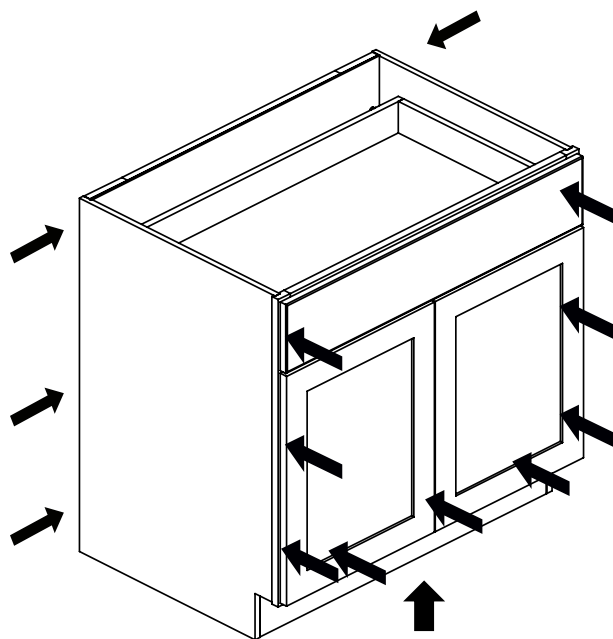
Wooden pad



RIGHT



WRONG

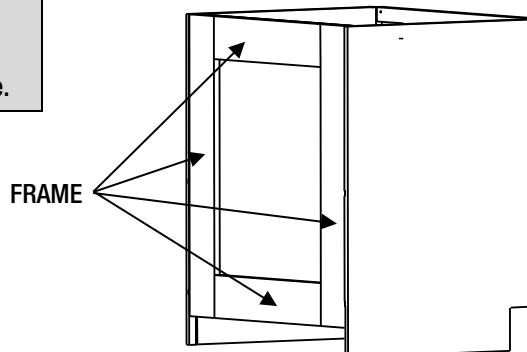


2 Attach the cabinet to the wall.



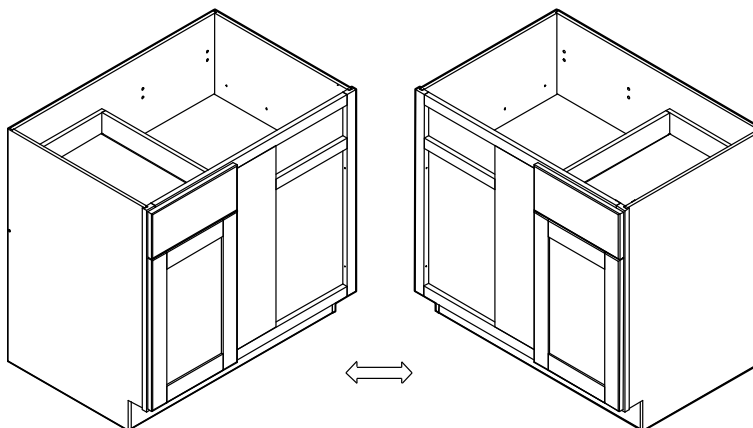
IMPORTANT:

When attaching cabinet to the wall, making sure that it is attached to the "frame" of the back panel as shown beside.

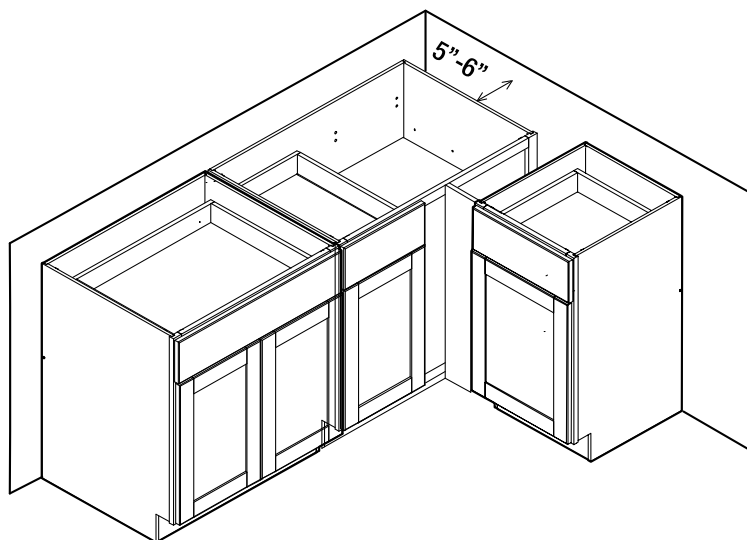


Blind Base Cabinet Installation

- Drawer, door, cover panel can be switched between Left/Right by removing the screws of the slides, hinge, cover panel, then assembling them on the other side and screwing them back.



- The blind corner needs to be installed approximately 5"-6" away from the wall to prevent the drawer and door of the corner unit from interfering with adjacent cabinets.
- Leave 5-6" space between the corner unit and another unit on the opposite side and fill it with a filler such as F630 (not provided).



Care and Cleaning

- For normal spills, a damp cloth is sufficient. Dry the surface immediately.
- Doors can be cleaned with most general-purpose household cleaners.
- Do not use caustic agents and/or abrasive scrubbers, or oven cleaners.
- Cabinets can be cleaned with a damp sponge or cloth using soapy water, or most general-purpose household cleaners. Do not use any abrasive cleaner or scrubbers.
- Do not allow liquids to remain on the surface for long periods of time.

HAMPTON BAY[®]

Questions, problems, missing parts? Before returning to the store,
call Hampton Bay Customer Service
8 a.m. – 7 p.m., EST, Monday – Friday, 9 a.m. – 6 p.m., EST, Saturday

1-855-HD-HAMPTON

HAMPTONBAY.COM

Retain this manual for future use.