

HOM4080M200PCVP

Load center, Homeline, 1 phase, 40 spaces, 80 circuits, 200A convertible main breaker, PoN, NEMA1, value pack



Main

Product Type	Load Center value pack
Marketing Trade Name	Homeline
Load Center Type	Main breaker
Rated Current	200 A
Number of Spaces	40
Number of Circuits	80
Enclosure Rating	NEMA 1 indoor
Cover Type	Combination flush/surface cover
Electrical Connection	Lugs
Included Options	Circuit breaker 1) 2P 200 A 120/240 V AC main supply ready assembled Circuit breaker 3) 1P 20 A 120/240 V AC Circuit breaker 2) 2P 30 A 120/240 V AC

Complementary

Short Circuit Current Rating	22 kA
Number of Tandem Breakers	40
Number of Phases	1 phase
Rated Operational Voltage	120/240 V AC
Wire Size	AWG 4...250 kcmil aluminium/copper
Wiring Configuration	3-wire
Cover Finish	Gray baked enamel
Busbar Material	Tin plated aluminium busbar
Enclosure Material	Welded sheet steel
Surface Finish	Baked enamel Gray
Box Number	12
Height	39.37 in (1000 mm)
Width	14.25 in (362 mm)
Depth	3.74 in (95 mm)

Environment

Ambiant Air Temperature for Operation	23 °F (-5 °C) 104 °F (40 °C)
Product Certifications	UL E-6294

Ordering and shipping details

Category	00185 - MISC. HOM LOAD CENTERS
Discount Schedule	DE3C
GTIN	00785901977513
Nbr. of units in pkg.	1
Package weight(Lbs)	39.7 lb(US) (18.01 kg)
Returnability	Yes
Country of origin	US

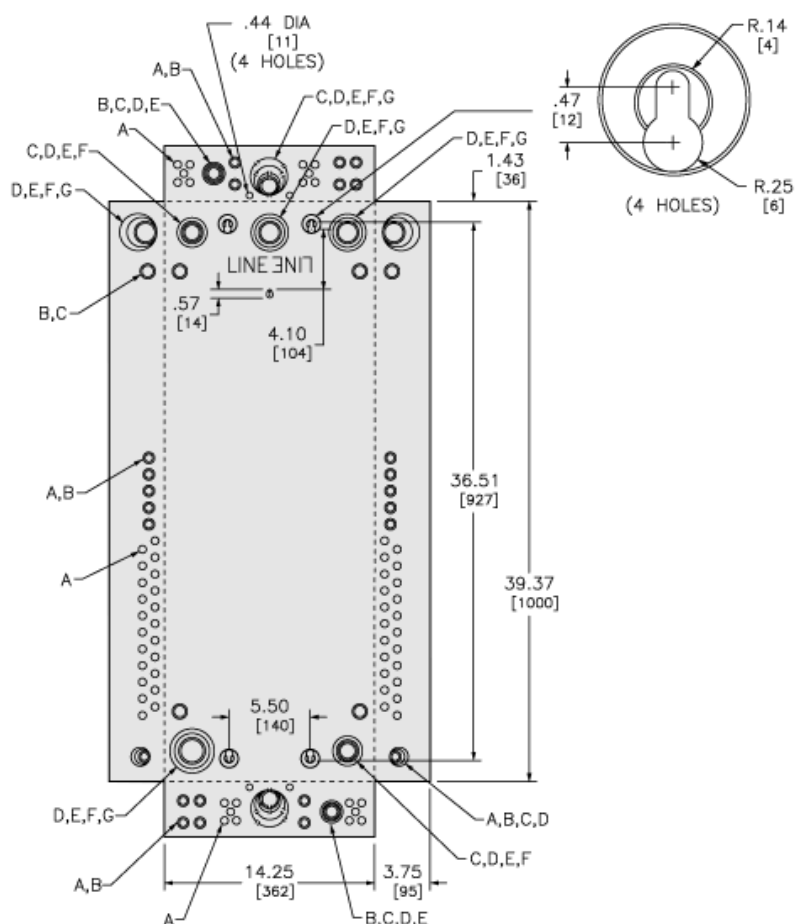
Packing Units

Unit Type of Package 1	PCE
Package 1 Height	5.71 in (14.5 cm)
Package 1 width	16.30 in (41.4 cm)
Package 1 Length	42.20 in (107.2 cm)
Package 2 Weight	670.00 lb(US) (303.907 kg)

Offer Sustainability

Sustainable offer status	Green Premium product
California proposition 65	WARNING: This product can expose you to chemicals including: Lead and lead compounds, which is known to the State of California to cause cancer and birth defects or other reproductive harm. For more information go to www.P65Warnings.ca.gov
REACH Regulation	REACH Declaration
REACH free of SVHC	Yes
EU RoHS Directive	Compliant EU RoHS Declaration
Toxic heavy metal free	Yes
Mercury free	Yes
RoHS exemption information	Yes
China RoHS Regulation	China RoHS Declaration
Environmental Disclosure	Product Environmental Profile

Approximate Dimensions and Knockout Sizes



KNOCKOUTS							
SYMBOL	A	B	C	D	E	F	G
IN	.50	.75	1.00	1.25	1.50	2.00	2.50
MM	13	19	25	32	38	51	64

in.
[mm]

Connections and Wiring Diagrams

