

# kobiworks



## SERENITY

Frameless Single Sliding Door



### **Questions?**

Customer Support: **+1 909-276-7014**  
Operation Hours: **8am-5pm Mon-Fri**  
**PST**

### **Complicated Stuff?**

[cs@kobiworks.com](mailto:cs@kobiworks.com)



# General Information



Threshold for the **SERENITY** model has to be at least **2-5/8"** wide for the entire shower to fit.

Out Of Plumb tolerance is 1/4" which can be adjusted on the rollers.



## Note:

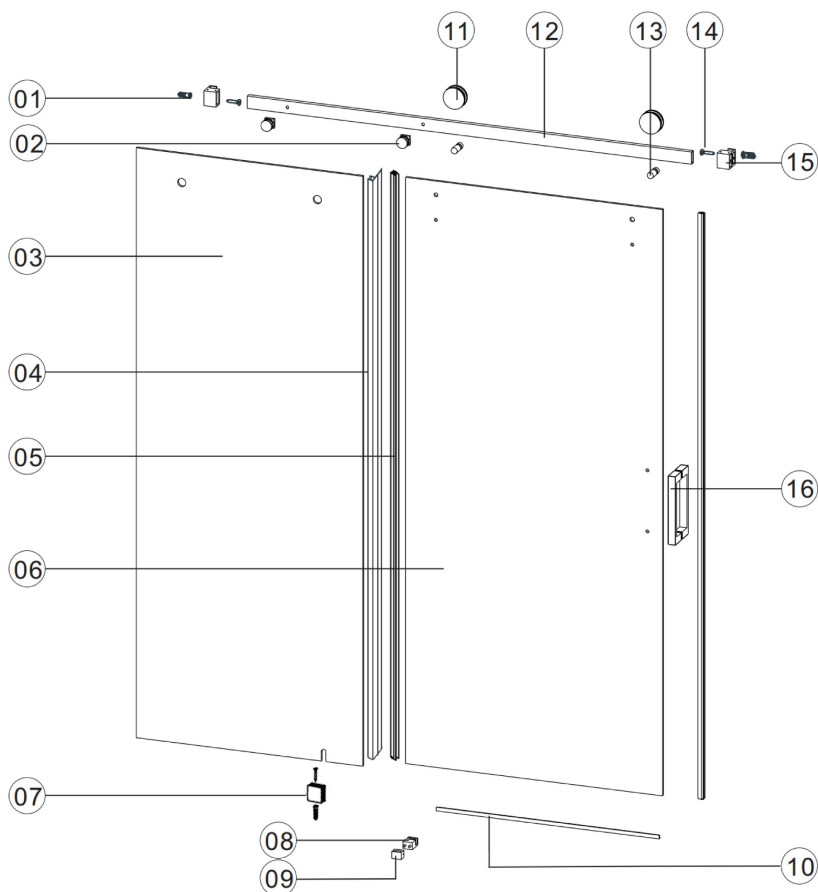
- Installation of this shower door requires the threshold to be drilled ( 1 hole ), contact the manufacturer of the base in regards to any questions related drilling holes into their products.
- Recommend using waterproof, mildew-resistant silicone caulk.
- Recommend caulking each drilled holes to waterproof further.
- Professional Installation Recommended.
- Minimum two installers required.

## Summary:

1. Measuring the opening space.
2. Punch the holes by template or by height.
3. Install wall brackets.
4. Install header bar.
5. Mount the fixed panel and install it with the clamp.
6. Lock the fixed panel with the bar by using the glass fastener ( ITEM 3 )
7. Mount the guide block on the fixed panel.
8. Mount the glass door with the rollers on, on the inside or outside, it's reversible.
9. Apply the PVC seals on both ends.
10. Install the threshold with silicone.



# Diagram



ITEM	PARTS	DIAGRAM	QTY
1	Wall plugs Ø6		3
2	Track holder for fixed panel		2
3	Fixed panel		1
4	Fixed panel seal		1
5	Door seal		2
6	Sliding door		1
7	Wall mount bracket		1
8	Floor guide for fixed glass		1

ITEM	PARTS	DIAGRAM	QTY
9	Floor guide for door glass		1
10	Anti-splash threshold		1
11	Roller		2
12	Rail		1
13	Anti jumping knob		2
14	Screw St4x20		3
15	Guide rail bracket		2
16	Back to back door pull		1

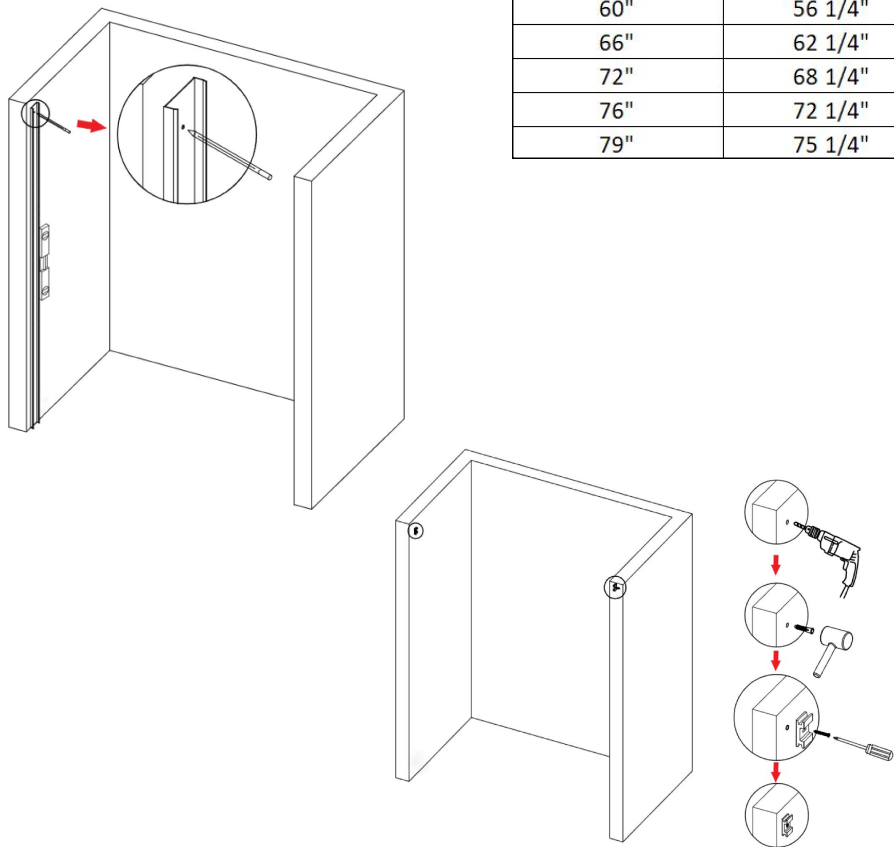
**Step 1.**

Using the provided drilling template, mark the holes and drill the holes using a drill bit in your case. Mount the wall brackets.

Please make sure the template is placed level, making sure the header bar location will match the glass in case of given a wrong measurement.

For hole locations, please read and compare the locations on the chart.

Product Height	A
60"	56 1/4"
66"	62 1/4"
72"	68 1/4"
76"	72 1/4"
79"	75 1/4"

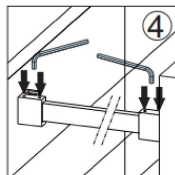
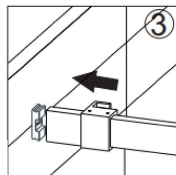
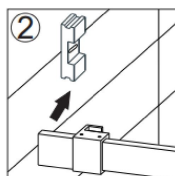
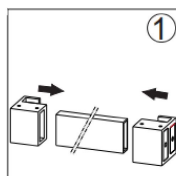
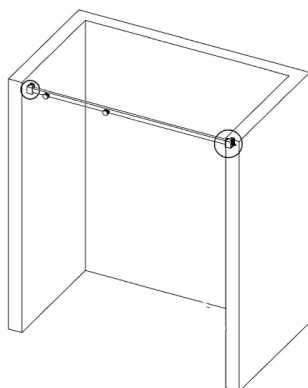
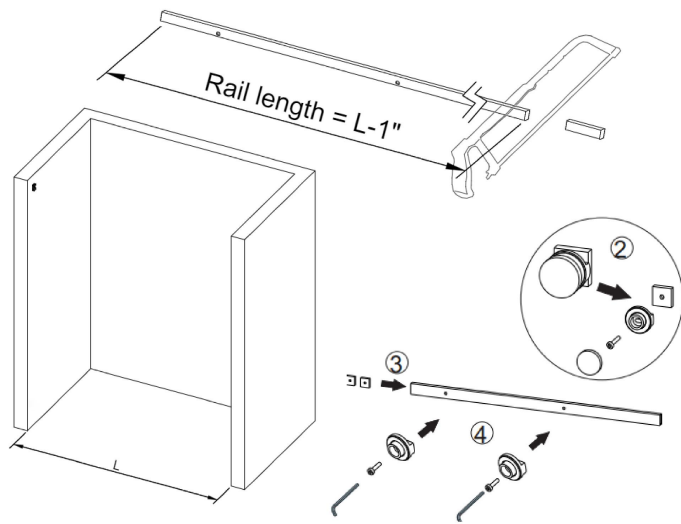


## Step 2.

Cut the header bar to your top-opening minus 1".

Mount the bracket afterwards.

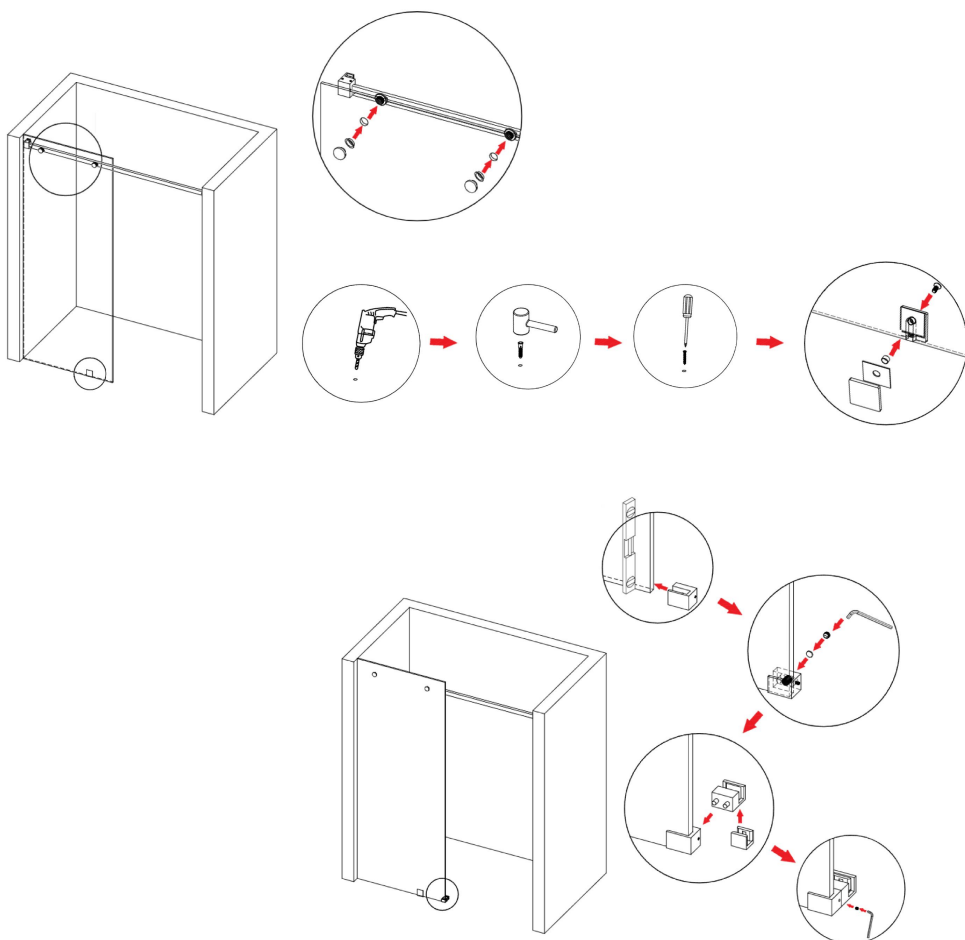
Installation  
Video



### Step 3.

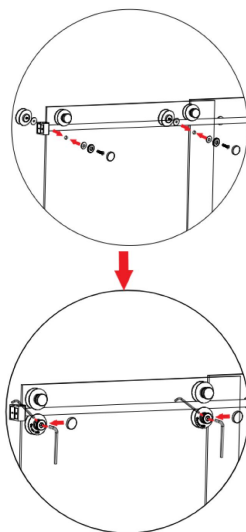
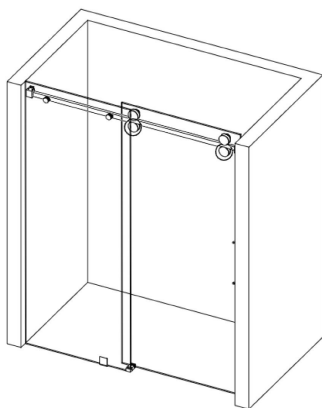
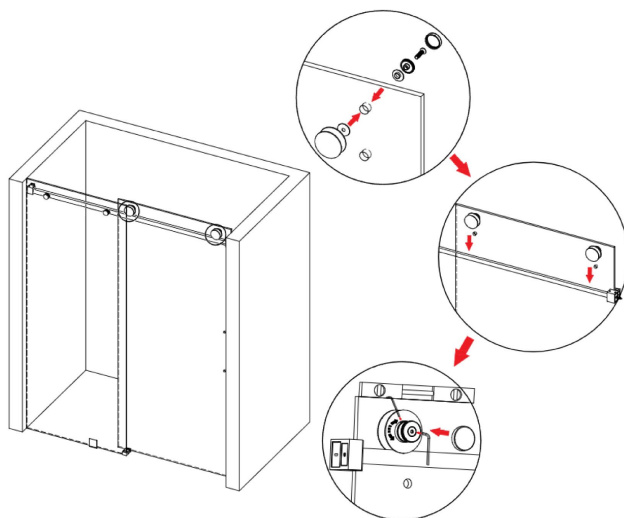
Mount the fixed panel glass and secure it on the header bar. Mark the clip, drill the hole for the clip then install the clip as well on a plumb fixed panel.

After that's done, install the guide block onto the fixed panel.



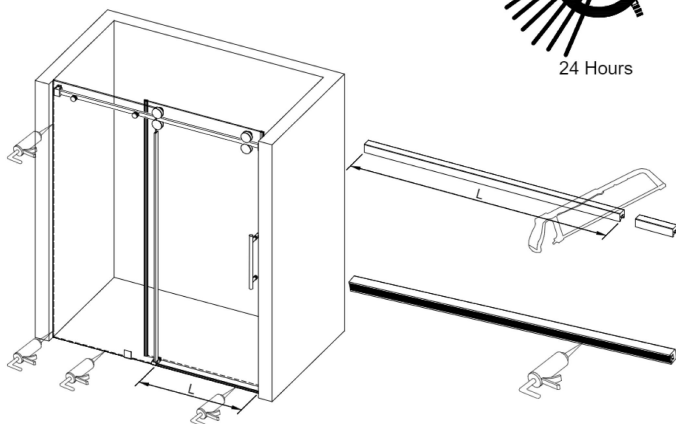
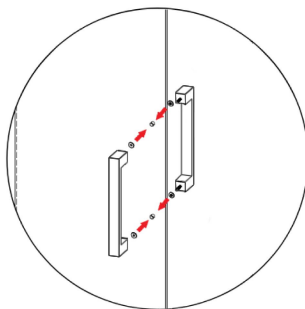
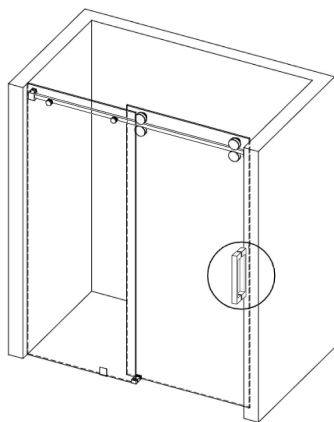
## Step 4.

Mount the rollers on the glass, and mount the glass on the header bar. Our rollers can adjust up to 1/4" out-of-plumb walls.



## Step 5.

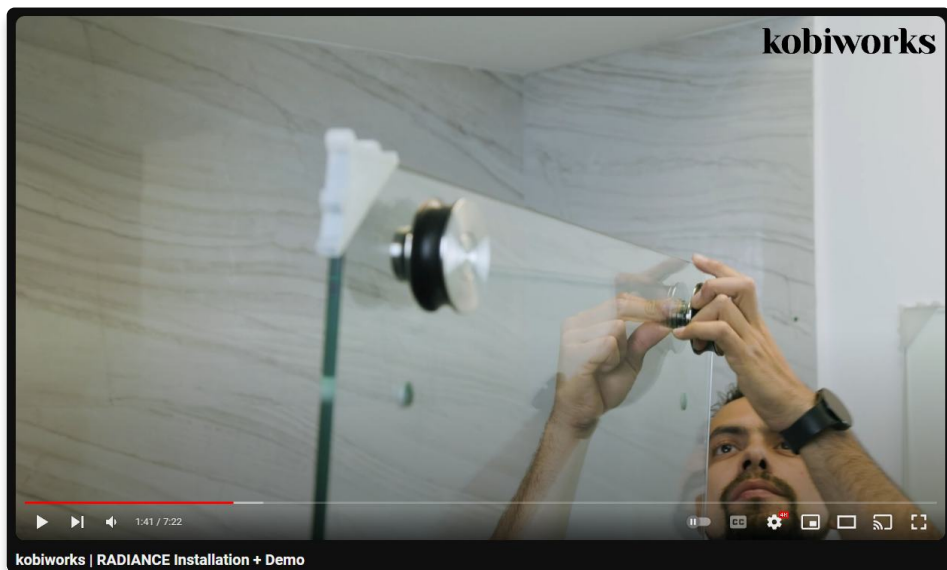
Mount the the handle and PVC on both ends. Install the threshold to the length of your opening with silicone.







**Watch out!** We have an installation video on YouTube too!



### Additional Resources

Website: <https://kobiworks.com>

Address: 1265 S. Johnson Dr, City Of Industry, CA 91745



#### Questions?

Customer Support: **+1 909-276-7014**

Operation Hours: **8am-5pm Mon-Fri**  
**PST**

#### Complicated Stuff?

[cs@kobiworks.com](mailto:cs@kobiworks.com)



