

kobiworks



FUSION

Framed Double Sliding Door



Questions?

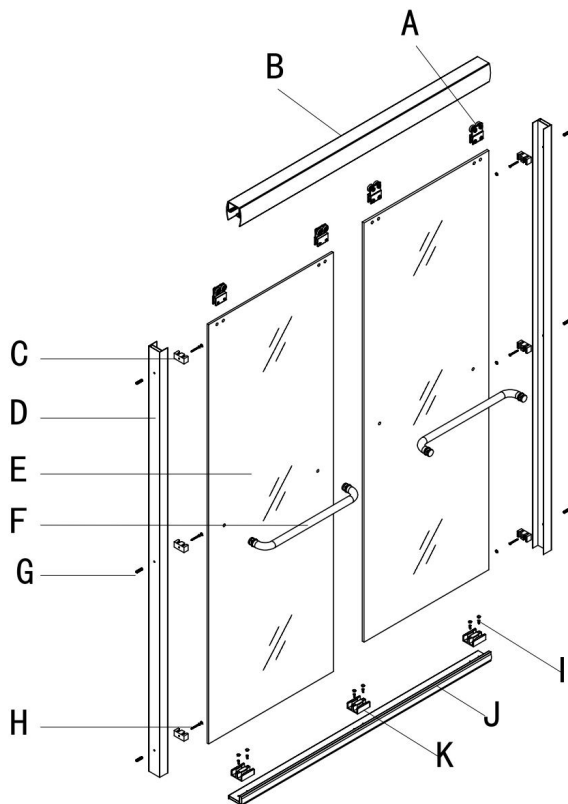
Customer Support: **+1 909-276-7014**
Operation Hours: **8am-5pm Mon-Fri**
PST

Complicated Stuff?

cs@kobiworks.com



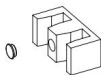
Diagram



A: x4pcs



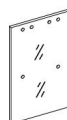
B: x1pc



C: x6pcs



D: x2pcs



E: x2pcs



F: x2pcs



G: x6pcs



ST4X40

H: x6pcs

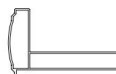


ST4X10

I: x6pcs



J: x3pcs



K: x1pc

General Information



Threshold for the **FUSION** model has to be at least **2"** wide for the entire shower to fit.

Out Of Plumb tolerance is 1/4" is recommended so the unit closes correctly.



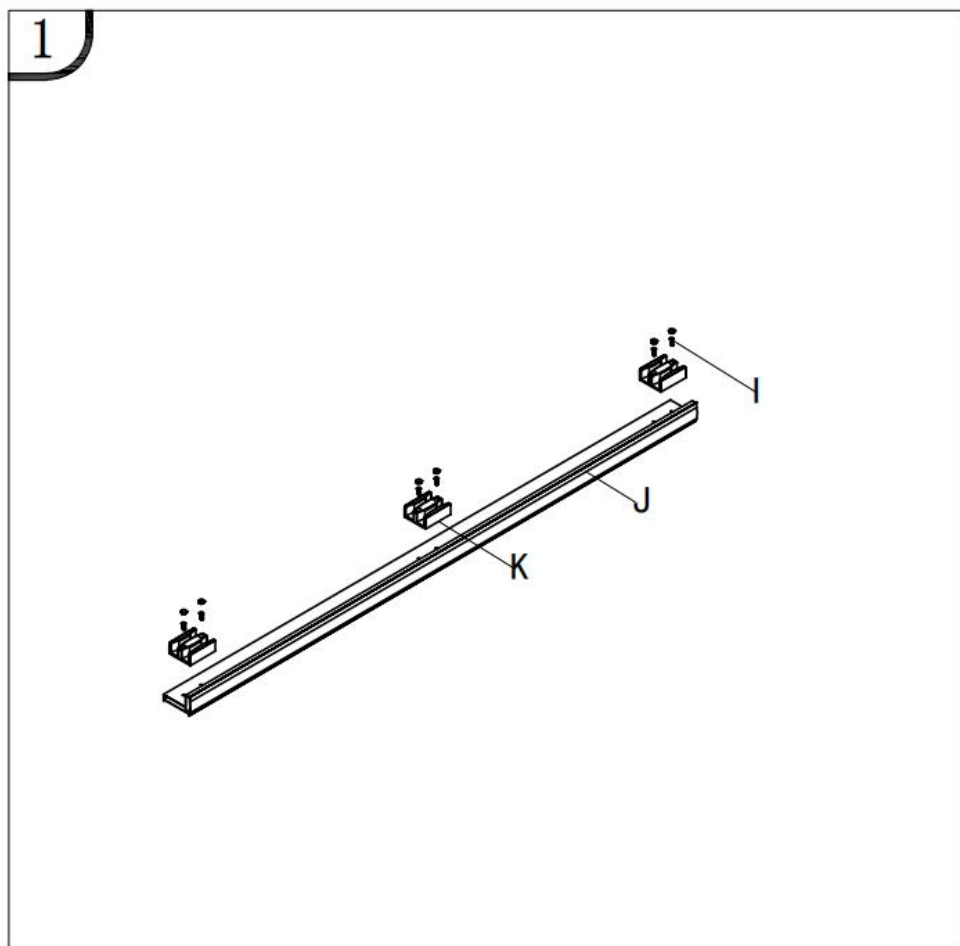
Note:

- Installation of this shower door requires the threshold to be drilled (1 hole), contact the manufacturer of the base in regards to any questions related drilling holes into their products.
- Recommend using waterproof, mildew-resistant silicone caulk.
- Recommend caulking each drilled holes to waterproof further.
- Professional Installation Recommended.
- Minimum two installers required.



Step 1.

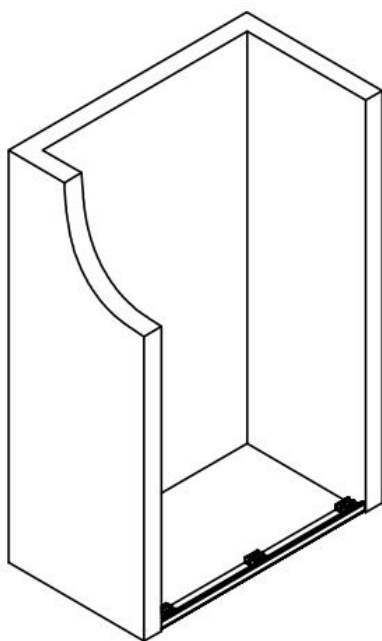
Cut the threshold to your bottom opening size. Mount the guiding brackets onto the threshold as shown on the image.



Step 2.

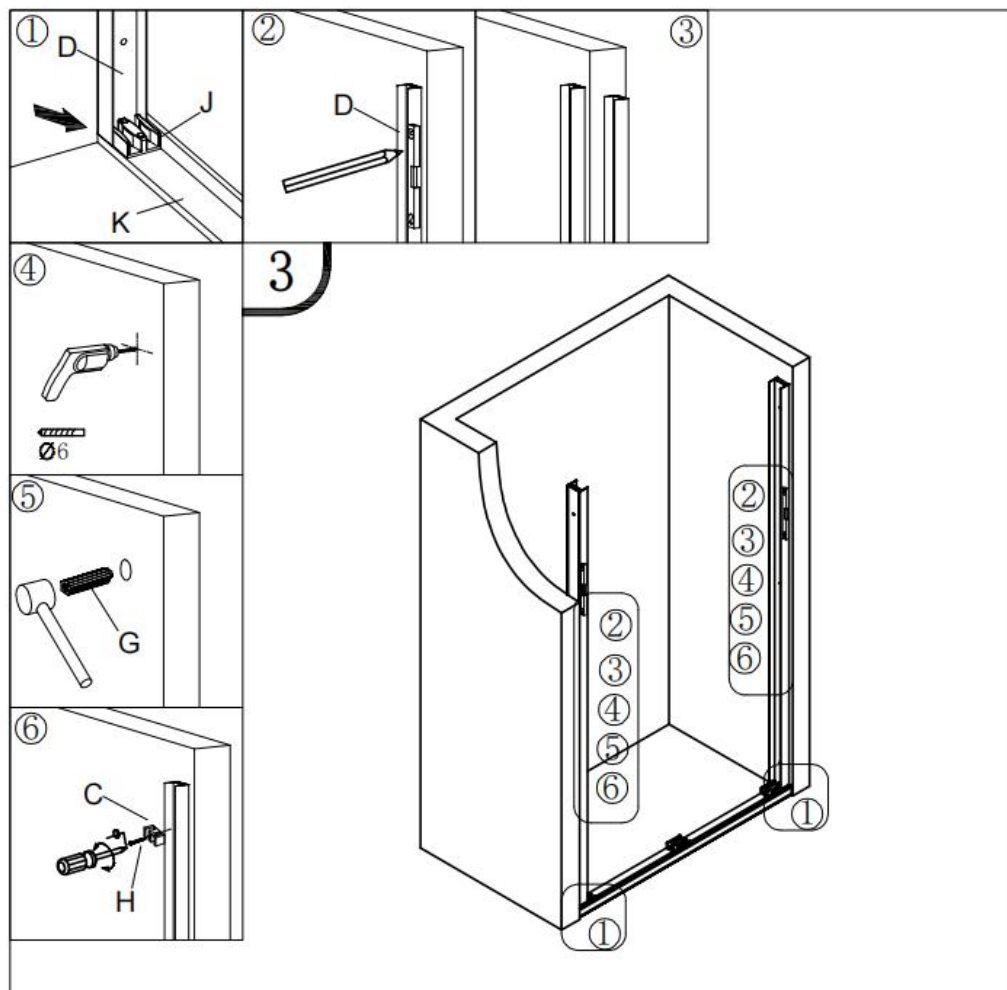
Install the threshold onto your opening.

2



Step 3.

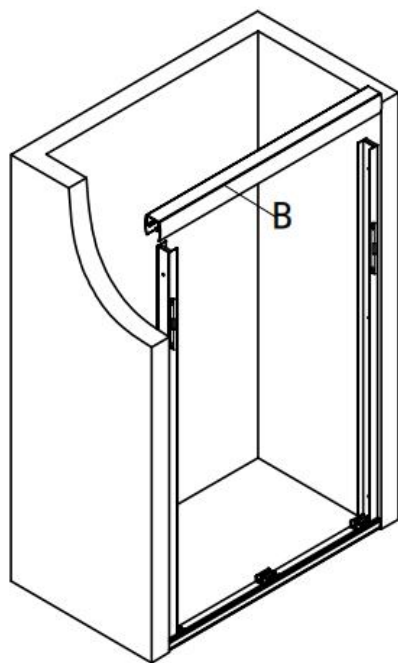
Mount the side sill, marking the holes to drill, making sure the sill is leveled properly, afterwards, remove the sill and drill the holes and secure it properly.



Step 4.

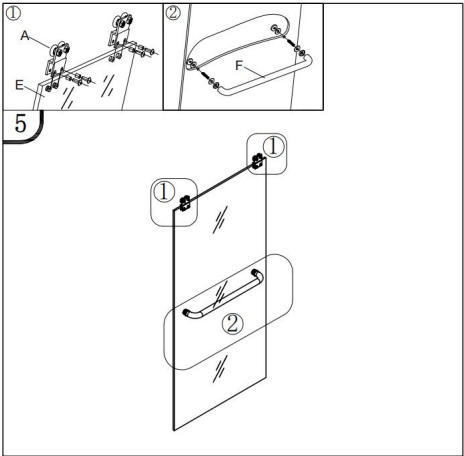
Mount the header cut to your top opening size.

4



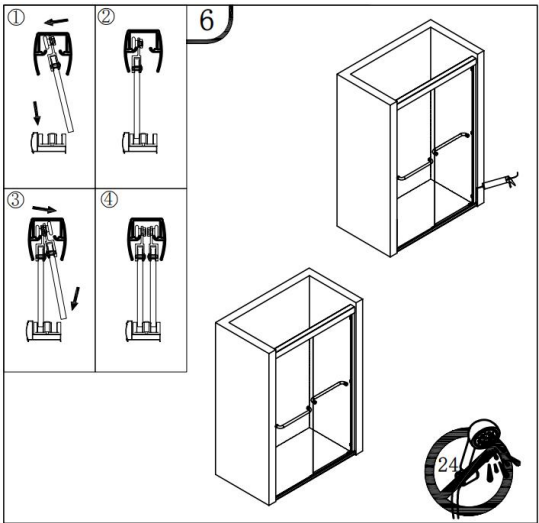
Step 5.

Mount the rollers and towel bar to the glass.



Step 6.

Mount the panels onto the header then silicone seal the edges.



Additional Resources

Website: <https://kobiworks.com>

Address: 1265 S. Johnson Dr, City Of Industry, CA 91745



Questions?

Customer Support: **+1 909-276-7014**

Operation Hours: **8am-5pm Mon-Fri**
PST

Complicated Stuff?

cs@kobiworks.com

