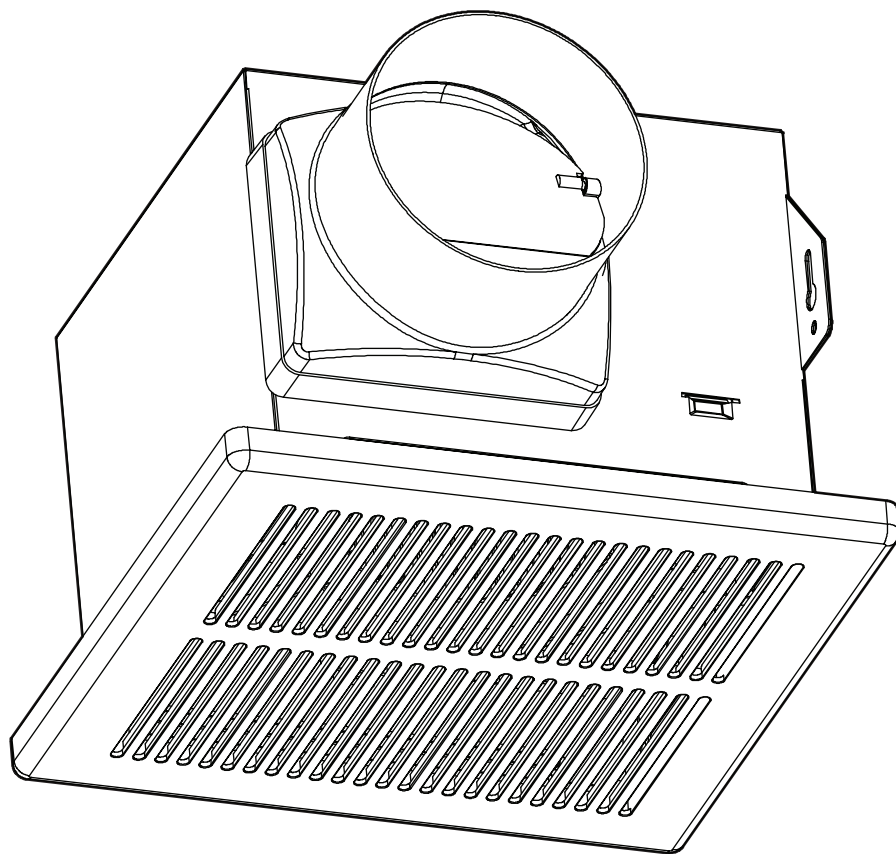




Item #1004 181 633
Model #BPT13-14HD

USE AND CARE GUIDE

READ AND SAVE THESE INSTRUCTIONS
80 CFM BATH FAN WITH HUMIDITY SENSOR



Questions, problems, missing parts? Before returning to the store,
call Hampton Bay Customer Service
8 a.m. - 7 p.m., EST, Monday – Friday, 9 a.m. – 6 p.m., EST, Saturday

1-855-HD-HAMPTON

HAMPTONBAY.COM

THANK YOU

We appreciate the trust and confidence you have placed in Hampton Bay through the purchase of this exhaust fan. We strive to continually create quality products designed to enhance your home. Visit us online to see our full line of products available for your home improvement needs. Thank you for choosing Hampton Bay!

Table of Contents

Safety Information	2
Warranty	3
Product Specifications	3
Typical Installation	3
Pre-Installation	4
Wiring Diagrams	4
Quick Connector Instructions	4
Planning Installation	4
Tools Required	5
Package Contents	5

Installation - New Construction	6
Installation - Existing Construction	8
Ventilation Fan Operation	11
Care and Maintenance	12
Troubleshooting	12

Safety Information

PLEASE READ AND UNDERSTAND THIS ENTIRE MANUAL BEFORE ATTEMPTING TO ASSEMBLE, OPERATE OR INSTALL THE PRODUCT.

1. Always disconnect the power supply prior to servicing the fan, motor or junction box.
2. Follow all local building, safety and electrical codes as well as NEC (National Electrical Code) and OSHA (Occupational Safety and Health Act).
3. Electric Service supply must be 120 volts, 60 hertz.
4. This product must properly connect to the grounding conductor of the supply circuit.
5. Do not bend or kink the power wires.
6. Do not use this fan with any solid state control device, such as a remote control, dimmer switch, or certain timers. Mechanical timers are not solid state devices.
7. Do not install in a ceiling with insulation greater than R40.
8. Duct work should be installed in a straight line with minimal bends.
9. Duct work size must be the same size as the discharge and should not be reduced. Reducing the duct size may increase fan noise.
10. If this unit is to be installed over a tub or shower, it must be marked as appropriate for the application. When the fan is going to install in the bathroom, the fan and the tub need to be more than 1.0 meter between each other, the fan required to install at the other side of the tub in ceiling. Acceptable for use over a bathtub or shower when installed in a GFCI protected branch circuit.



WARNING: TO REDUCE THE RISK OF FIRE, ELECTRIC SHOCK, OR INJURY TO PERSONS, OBSERVE THE FOLLOWING:

Use this unit in the manner intended by the manufacturer. If you have any questions. Please call customer service.



WARNING: Before servicing or cleaning unit, switch power off at service panel and lock the service disconnecting means to prevent power from being switched on accidentally. When the service disconnecting means cannot be locked, securely fasten a prominent warning device, such as a tag, to the service panel.



WARNING: Installation work and electrical wiring must be done by a qualified person(s) in accordance with all applicable codes and standards, including fire-rated construction.



WARNING: Sufficient air is needed for proper combustion and exhausting of gases through the flue (chimney) of fuel burning equipment to prevent backdrafting. Follow the heating equipment manufacturer's guideline and safety standards such as those published by the National Fire Protection Association (NFPA), and the American Society for Heating, Refrigeration and Air Conditioning Engineers (ASHRAE) and local code authorities.



WARNING: When cutting the ceiling, do not damage electrical wiring and other hidden utilities.



WARNING: Ducted fans must always be vented to the outdoors.



CAUTION: For general ventilating use only. Do not use to exhaust hazardous or explosive materials and vapors.



CAUTION: Not for use in cooking areas.



CAUTION: To reduce the risk of injury to persons, install the fan at least 7.6 ft. (2.1 m) above the floor.

Warranty

LIMITED LIFETIME WARRANTY

WHAT IS COVERED

If this product fails due to a defect in materials or workmanship at any time during the first THREE years of ownership, the manufacturer will replace it free of charge, postage-paid at their option. This warranty does not cover products that have been abused, altered, damaged, misused, cut or worn. This warranty does not cover use in commercial applications. Use only manufacturer-supplied genuine warranty repair replacement parts to repair this fan. Use of non-genuine repair parts will void your warranty. The manufacturer **DISCLAIMS** all other implied or express warranties including all warranties of merchantability and/or fitness for a particular purpose. As some states do not allow exclusions or limitations on an implied warranty, the above exclusions and limitations may not apply. This warranty gives you specific legal rights, and you may have other rights that vary from state to state.

This warranty is limited to the replacement of defective parts only. Labor charges and/or damage incurred during installation, repair, replacement as well as incidental and consequential damages connected with the above are excluded. Any damage to this product as a result of neglect, misuse, accident, improper installation or use other than the purpose **SHALL VOID THIS WARRANTY**. Shipping costs for return product as part of a claim on the warranty must be paid for by the customer.

Contact the Customer Service Team at 1-855-HD-HAMPTON or visit www.HAMPTONBAY.com.

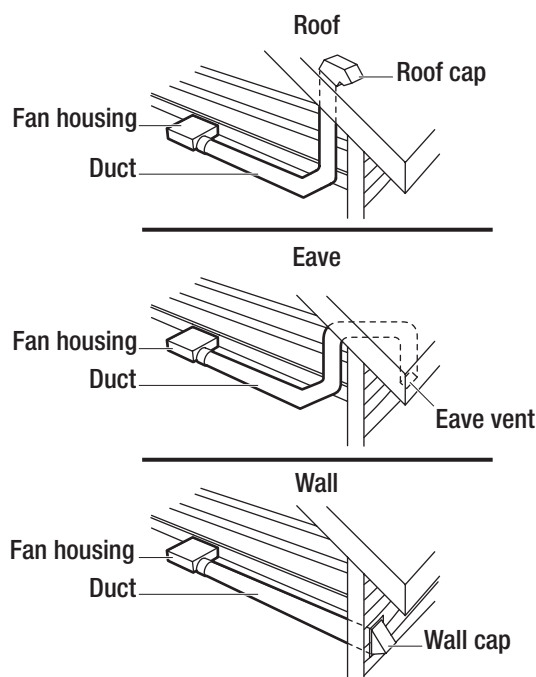
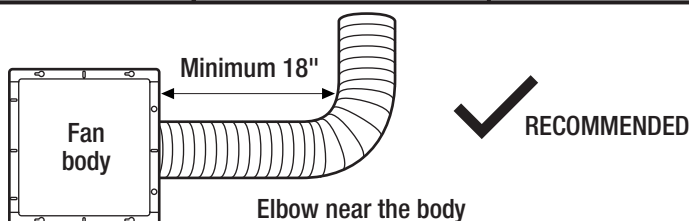
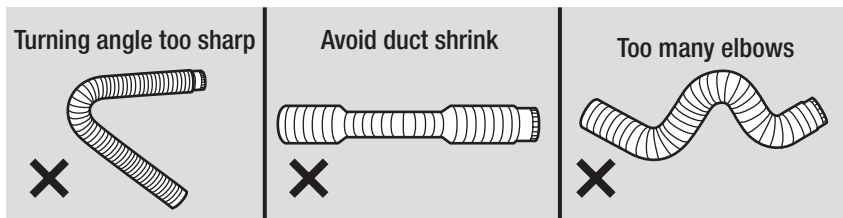
Product Specifications

Airflow: 80 CFM	Power consumption: 22 W
120 V, 60 Hz	Weight: 5.0 lbs.
Duct diameter: 4 in.	Ceiling Opening Dimension Requirements:
Sound output: 1.5 Sones	7.6 in. (L) x 7.3 in. (W) x 6.2 in. (H)

Typical Installation

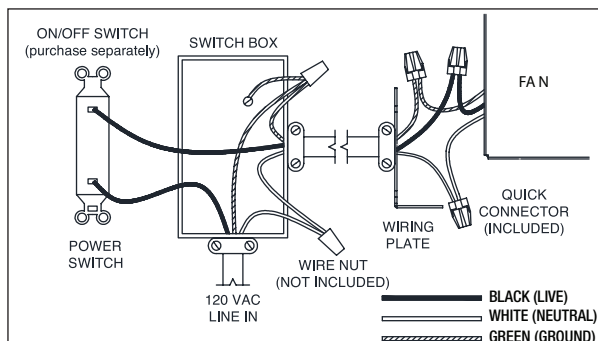
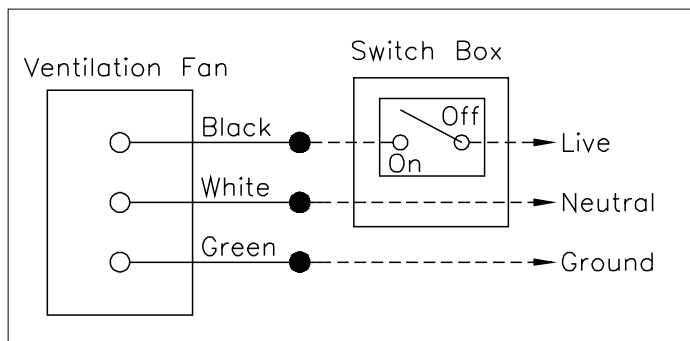
The ducting from this fan to the outside of the building has a strong effect on the air flow, noise and energy use of the fan. Use the shortest, straightest duct routing possible for best performance, and avoid installing the fan with smaller ducts than recommended. Insulation around the ducts can reduce energy loss and inhibit mold growth. Fans installed with existing ducts may not achieve their rated air flow.

Do not install ventilation fan in areas where the duct work will require configuration as shown.



Pre-Installation

WIRING DIAGRAMS



QUICK CONNECTOR INSTRUCTIONS

To be sold only with installation instructions.



WARNING: Wiring must comply with all applicable electrical codes. Turn OFF power before removing or installing connectors.



WARNING: COPPER TO COPPER ONLY. Do not use Aluminum wire.

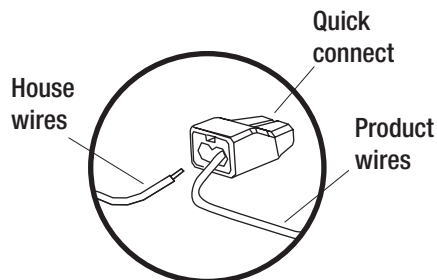


CAUTION: Accessory part (quick connector) should meet installation instructions below.

NOTICE: The connector is reusable on solid wires of the same wire gage or smaller. Do not reuse the connector on stranded wires.

NOTICE: Important wire information. Maximum temperature rating 105°C (221°F). 600 volts maximum for building wire and 1000 volts maximum for building wire and 1000 volts maximum in signs and lighting fixtures. The acceptable wire range includes: Solid: 12-18 AWG.

- Strip wires 3/8 in. - 1/2 in.
- Grip the wire firmly and push the stripped end of the wire into the open port of the connector. Use only one conductor per port.
- Verify the stripped end of the wires is fully inserted to the back of the connector.



PLANNING INSTALLATION

Before beginning installation of the product, make sure all parts are present. Compare parts with the package contents list and hardware contents. If any part is missing or damaged, do not attempt to install the product.



WARNING: Turn off electricity at breaker box before beginning installation.

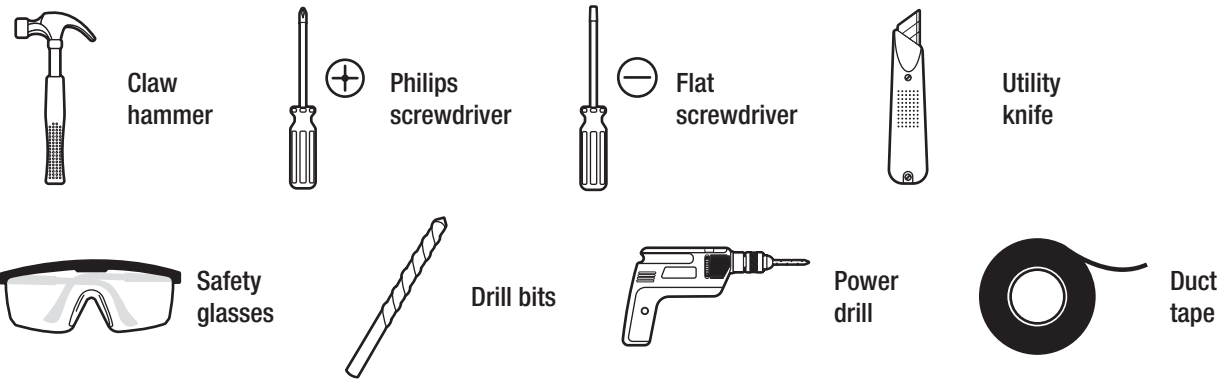


NOTE: Installation may vary depending on how the previous bath fan was installed. Supplies necessary for the installation of your bath fan are not all included. However, most are available at your local home improvement or hardware store.

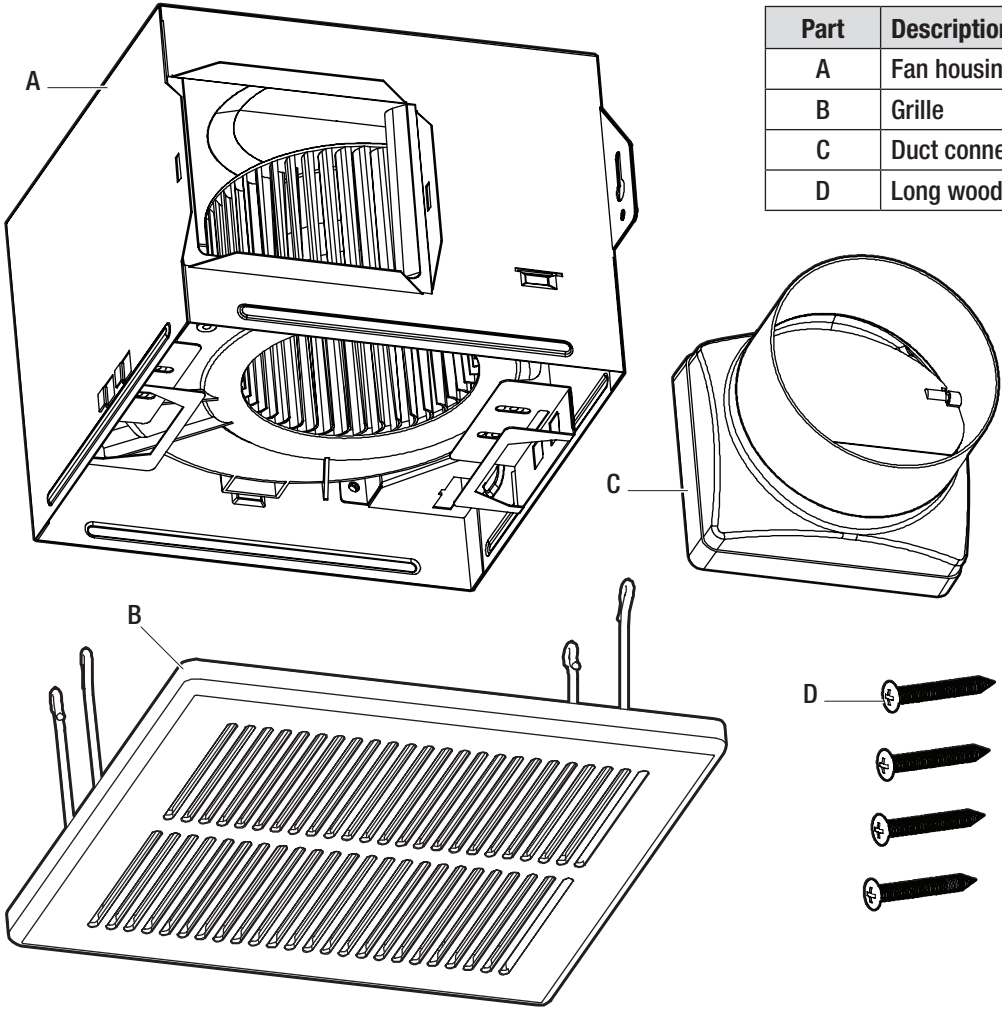
1. Carefully remove the unit from the carton.
2. Check the area above the installation location to be sure that wiring can run to the planned location, that duct work can be run and the area is sufficient for proper ventilation.
3. Inspect duct work and wiring before proceeding with installation.
4. Before installation, provide inspection and future maintenance access at a location that will not interfere with installation work.
5. You may need the help of a second person to install this fan; one person on the attic side and one on the room side.

Pre-Installation (continued)

TOOLS REQUIRED



PACKAGE CONTENTS



Part	Description	Quantity
A	Fan housing	1
B	Grille	1
C	Duct connector	1
D	Long wood screws (M4 x 30 mm)	4

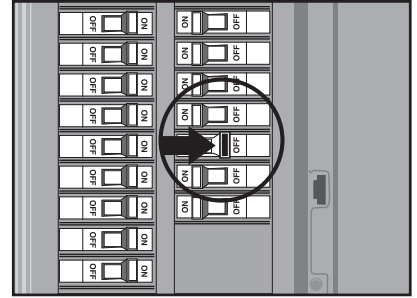
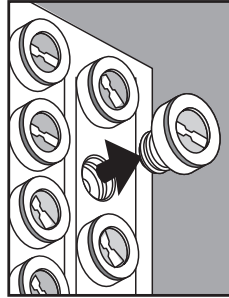
Installation - New Construction



CAUTION: Make sure power is switched off at service panel before starting installation.

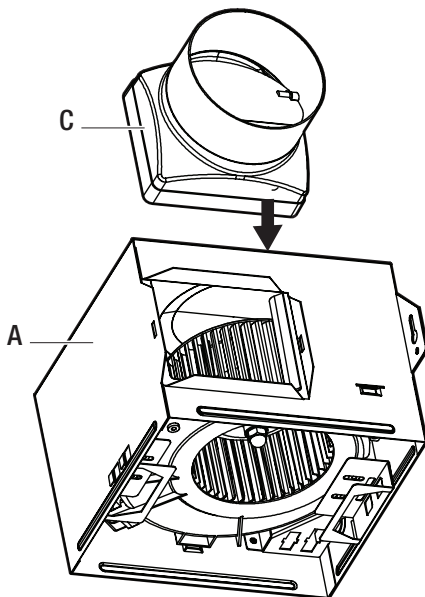


NOTE: Ceiling mount only.



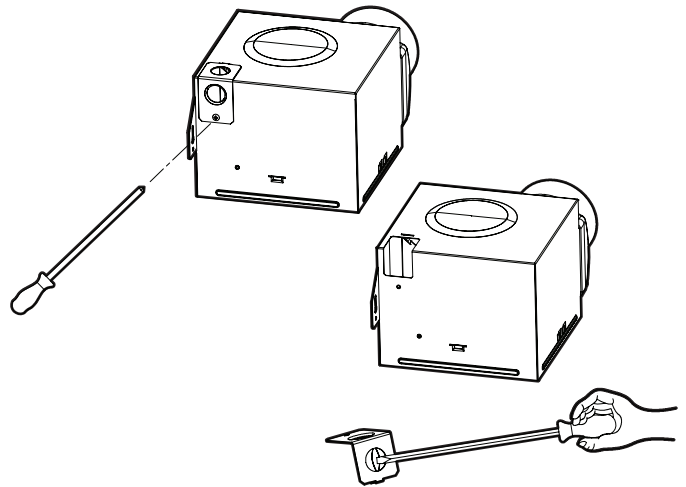
1 Attaching the duct connector

- Attach duct connector (C) to the fan housing (A) as shown in the drawing.



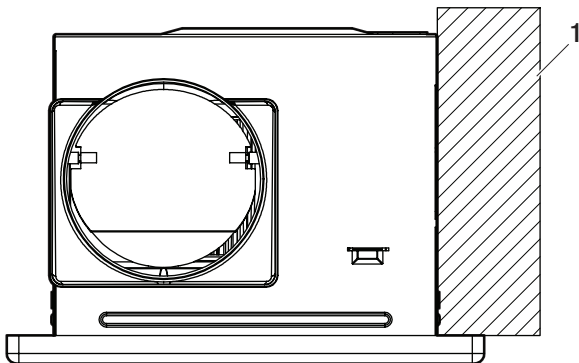
2 Removing the wiring box housing

- Remove the wiring box cover from the fan housing with a Phillips head screwdriver (not included).
- Remove the wiring knockout from the wiring box cover with a flathead screwdriver (not included).



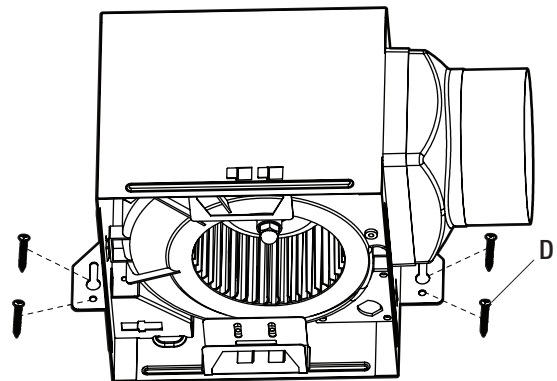
3 Placing the fan housing

- Place the fan housing next to a ceiling joist or wall stud. The fan housing should be level and perpendicular to the joist or stud (1).



4 Mounting the fan housing

- Mount the fan housing to the joist using four long wood screws (D) where indicated.



Installation - New Construction (continued)

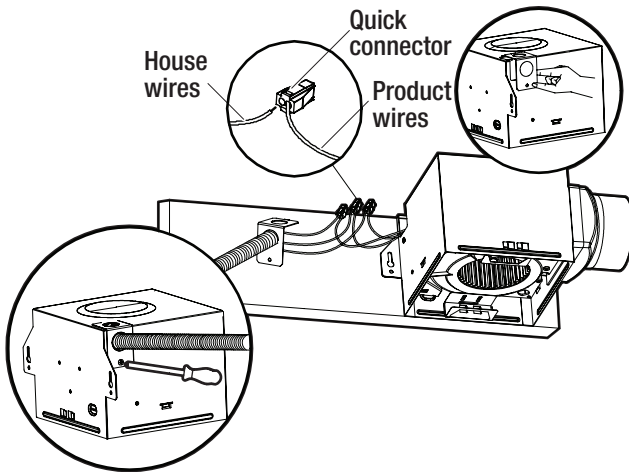
5 Connecting the house and fan wires

- Pull the wire through the hole and into the junction box (not included). Using a quick connector, secure 120 VAC house wiring from the wall switch to the fan as shown in the wiring diagram. 14AWG is the smallest conductor that shall be used for branch-circuit wiring.



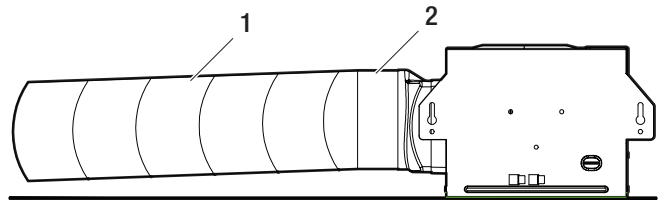
CAUTION: Make sure power is switched off at service panel before starting installation.

- Push the wires back through the hole. Reattach the wiring box cover.



6 Installing the duct

- Install a circular 4 in. duct (not included) and secure it with duct tape or clamps (neither included).
- Finish ceiling work. The ceiling hole should be aligned with the edge of the fan housing.

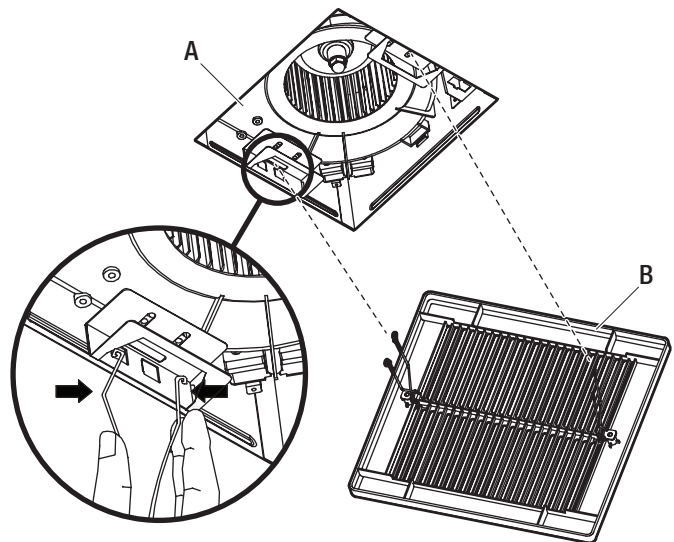


7 Installing the grille

- Pinch the mounting springs on the grille (B) and insert them into the narrow rectangular slots inside the fan (A). Push the grille (B) up toward the ceiling.
- Turn on electricity at the breaker box after finishing installation.



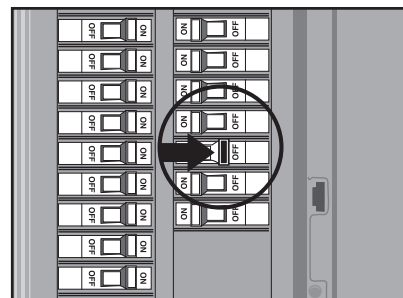
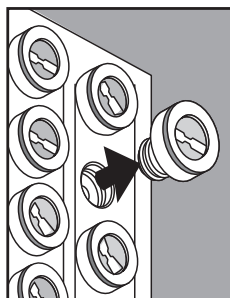
NOTE: Make sure the mounting spring is properly loaded into the fan slots.



Installation - Existing Construction

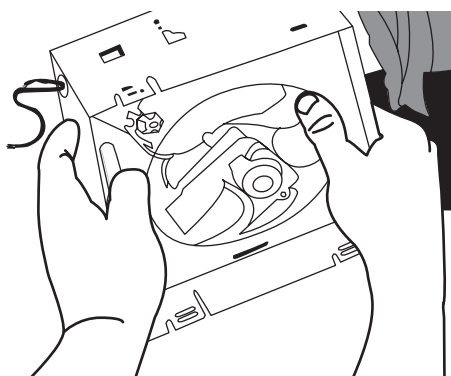


CAUTION: Make sure power is switched off at service panel before starting installation.



1 Removing the existing fan

- Remove the old fan from the ceiling.



2 Measuring the ceiling opening

- Measure the opening to assure it is large enough to accommodate the new fan body (A) (7.60 in. x 7.30 in.).

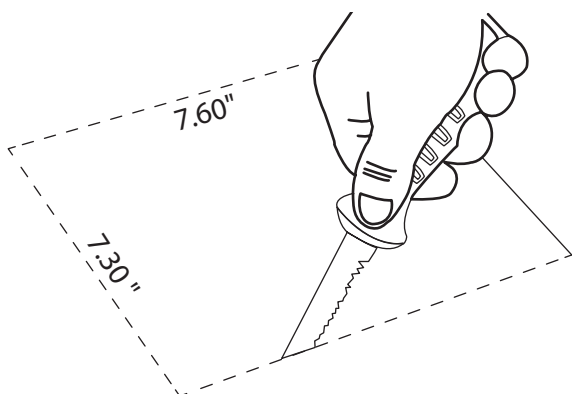


NOTE: 7.30 in. side of opening should be flush with the joist.



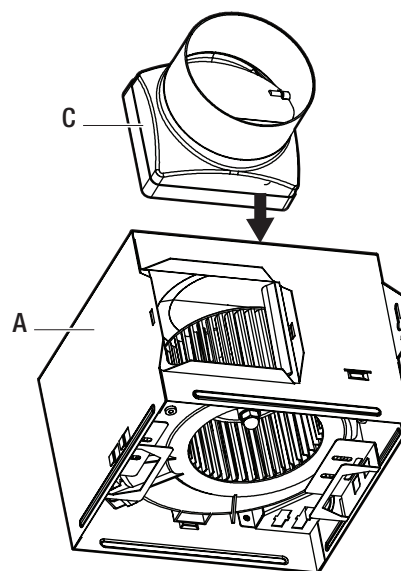
3 Enlarging the opening (optional)

- If this fan is not replacing an old fan, be sure to cut a 7.60 in. x 7.30 in. opening for the fan body (A).
- ENSURE THE 7.30 IN. SIDE OF THE OPENING IS FLUSH WITH THE JOIST FOR INSTALLATION FROM BELOW.



4 Attaching the duct connector

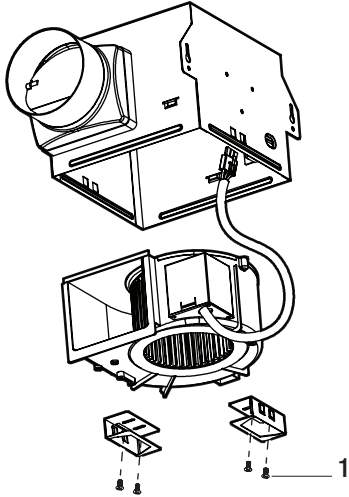
- Attach duct connector (C) to the fan housing (A) as shown in the drawing.



Installation - Existing Construction (continued)

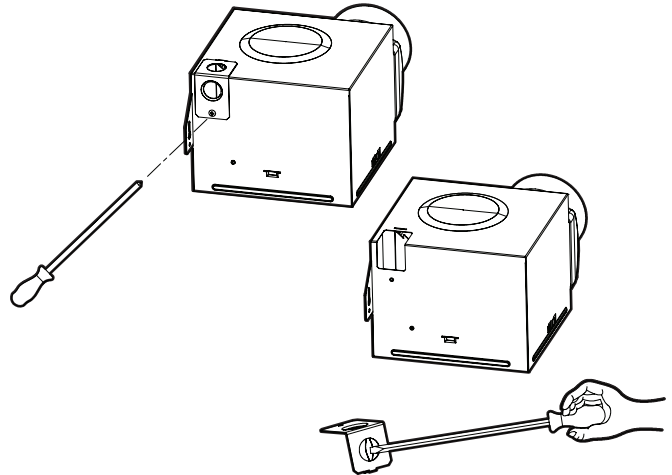
5 Removing the fan motor assembly

- Remove the four screws (1) that hold the fan motor assembly in place. Remove the fan motor assembly from the fan housing. Unplug the fan power unit.



6 Removing the wiring box housing

- Remove the wiring box cover from the fan housing with a Phillips head screwdriver (not included). Remove the wiring knockout from the wiring box cover with a flathead screwdriver (not included).



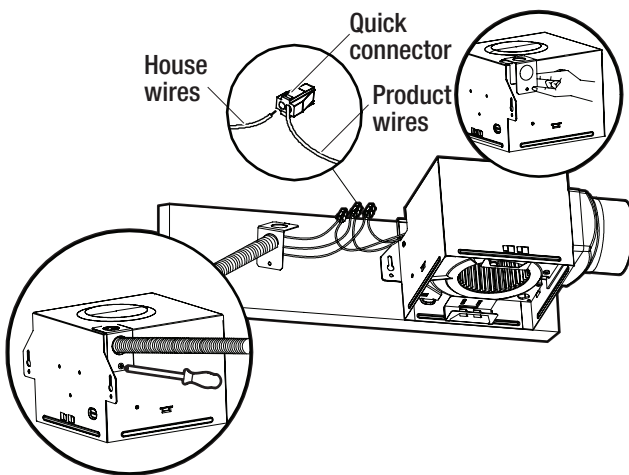
7 Connecting the house and fan wires

- Pull the wire through the hole and into the junction box (not included). Using a quick connector, secure 120 VAC house wiring from the wall switch to the fan as shown in the wiring diagram. 14AWG is the smallest conductor that shall be used for branch-circuit wiring.



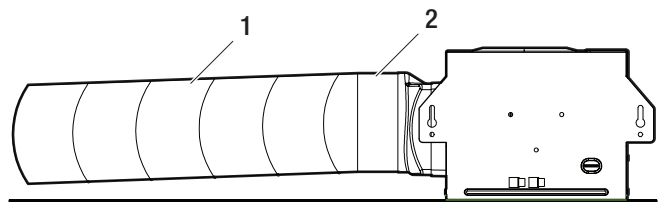
CAUTION: Make sure power is switched off at service panel before starting installation.

- Push the wires back through the hole. Reattach the wiring box cover.



8 Installing the duct

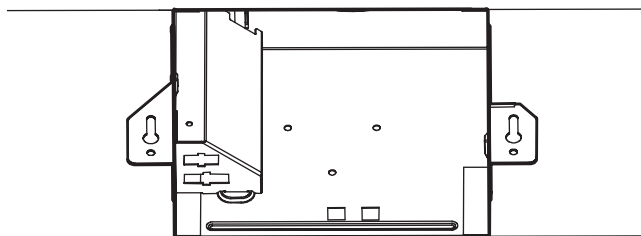
- Install a circular 4 in. duct (not included) (1) and secure it with duct tape or clamps (neither included) (2).
- Finish ceiling work. The ceiling hole should be aligned with the edge of the fan housing.



Installation - Existing Construction (continued)

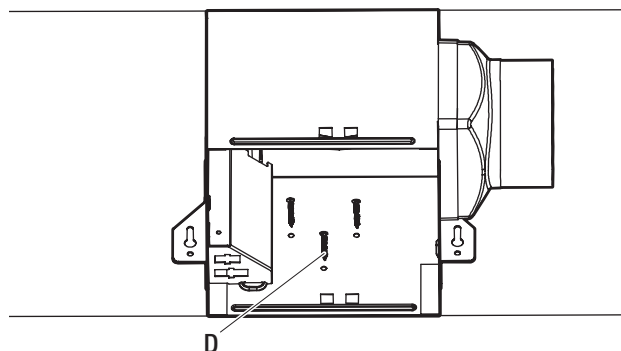
9 Inserting the fan housing

- Insert the fan housing through the existing hole in the ceiling. The fan housing should be level and perpendicular to the joist or stud.



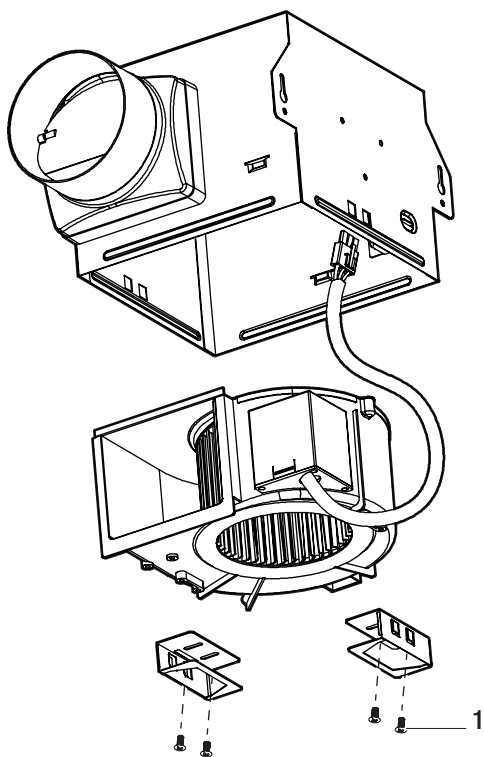
10 Mounting the fan housing to the joist

- Mount the fan housing to the joist using three long wood screws (D) where indicated by arrows inside the fan housing.




11 Reattaching the motor assembly

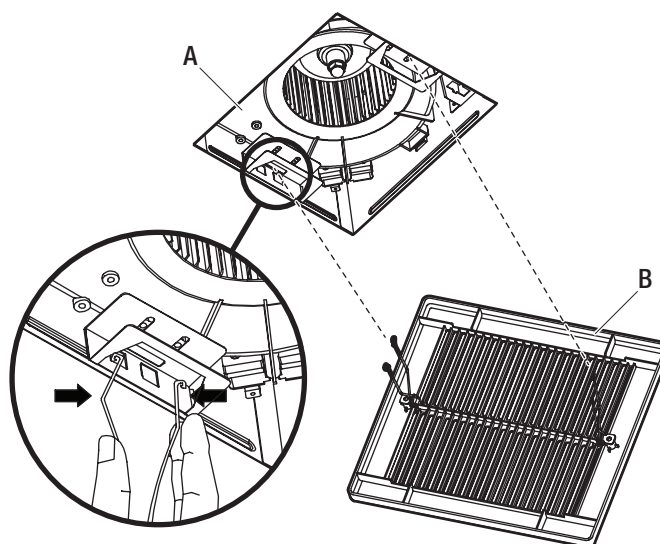
- Plug the motor assembly back into the power unit. Reattach the motor assembly using the four screws (1) removed in step 5.



12 Installing the grille

- Pinch the mounting springs on the grille (B) and insert them into the narrow rectangular slots inside the fan (A). Push the grille (B) up toward the ceiling.
- Turn on electricity at the breaker box after finishing installation.

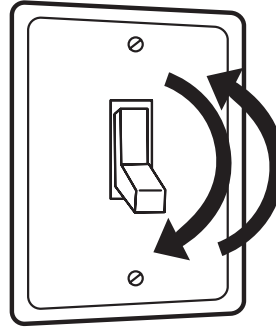
 **NOTE:** Make sure the mounting spring is properly loaded into the fan slots.



Ventilation Fan Operation

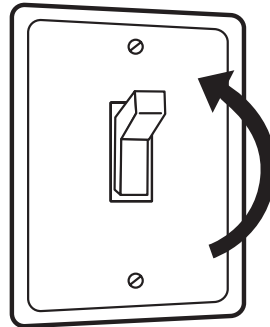
1 Turning the fan on

- Cycle the wall on/off switch to the ON position. The LED indicator light in the fan is RED. The fan will run continuously in this mode.



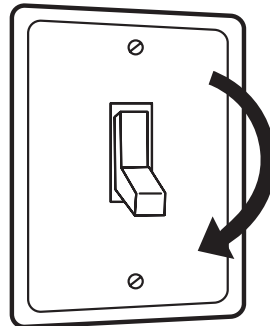
2 Humidity sensing mode (Green LED)

- Move the wall on/off switch to the OFF position, then back to the ON position twice within 10 seconds. The LED indicator light in the fan is GREEN. The fan will automatically turn on when the humidity level in the room goes above 60% and will automatically turn off when humidity level in the room is below 60%.



3 Turning the fan off

- Move the wall switch to the OFF position to turn the fan off.



FAN OPERATING MODES

Fan Mode	Humidity Level	LED Color	Wall Switch Position
1. Manual Mode	No requirement	Red	ON
2. Humidity Sensing Mode	Less than or equal to 60%	Green	Toggle switch from ON to OFF, then back to ON within 10 seconds
	Greater than 60%	Green	

Care and Maintenance



WARNING: Disconnect power supply before servicing.

- ☐ See SAFETY INFORMATION before proceeding. Routine maintenance should be done at least once a year.
- ☐ Never use solvents, thinner or harsh chemicals for cleaning the fan.
- ☐ Do not allow water to enter the motor.
- ☐ Do not immerse metal parts in water.

Troubleshooting

Problem	Solution	
The fan seems louder than it should.	The CFM is too great.	Be sure the CFM rating on the fan matches the square footage of your room.
	The damper is damaged or not working properly.	Check the damper to ensure it is opening and closing properly. If the damper has become damaged, please call Customer Service.
	The bend in the duct is too close to the fan discharge.	Be sure you do not have any sharp bends in the duct closer than 18 in. to the fan discharge.
	The fan discharge is reduced to fit a smaller duct.	Use the recommended size ducting to reduce fan noise.
	The fan body is not attached securely.	Be sure the fan is securely attached to the ceiling joists.
The fan keeps running even though the house humidity level is lower than 60% RH.	The sensor tolerance is +/- 10% RH.	Continue to let the fan run since it is good to keep venting the house and the electric bill is minimal. When the humidity is below the set point, the fan stops running.
	Outdoor humidity is back drafting into the fan.	
The fan is not clearing the room.	There is insufficient airflow intake in the room.	Be sure a door or window is slightly ajar or opened to allow airflow. The fan is not able to draw air out of the room without enough airflow to draw from.
	There is insufficient CFM.	Be sure the CFM rating on the fan matches the requirements for your room size.

NOTE: Using a tissue is not the correct method for determining if the fan is operating properly. If the fan clears steam from the room within approximately 15 minutes of completing your shower, then the fan is operating properly.



Questions, problems, missing parts? Before returning to the store,
call Hampton Bay Customer Service
8 a.m. – 7 p.m., EST, Monday – Friday, 9 a.m. – 6 p.m., EST, Saturday

1-855-HD-HAMPTON

HAMPTONBAY.COM

Retain this manual for future use.