

Smart toilet Smart Cleaner

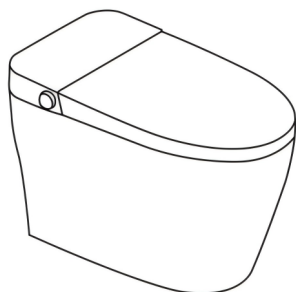
Operating Instructions

Product specification

Contents

First of all, we would like to express our sincere thanks to you for purchasing our products!

Please read this manual carefully before use so as to use the product correctly.



Safety Precautions	-----	1
Name Of Each Component	-----	3
Packing List	-----	3
<hr/>		
Product Installation		
• Installation Method	-----	4
• Confirmation Before Use	-----	5
<hr/>		
Use Of The Product		
• Instructions For Use	-----	6
<hr/>		
Cleaning And Maintenance Methods		
• Sprinkler Cleaning	-----	7
• Filter Screen Cleaning	-----	7
• Removal Method Of Toilet Cover	-----	8
<hr/>		
Troubleshooting	-----	9
Product Standard	-----	10
Product Warranty Card	-----	11

1

Safety Precautions

The contents shown here are related to user safety. Please use the product correctly after reading the instructions.



WARNING

Indicates that serious injury or death may result if you ignore the signs here



ATTENTION

Indicates that human injury or property damage may be caused by misoperation in disregard of the signs here in



- ◆ For the following people (children, elderly, patients, weak skin, people taking sleeping pills, drinkers, extremely tired people), please set the seat temperature at low gear if they use it for a long time.

※ Avoid cold burns caused by prolonged use



- ◆ Be sure to connect the ground wire.
- ※ If it is not connected properly, electric shock is likely to occur, danger of electric leakage
- ※ If there is no ground terminal, please entrust electrical installation company



- ◆ Do not power on without water, and do not use power other than the information on the nameplate.

※ Liable to cause fire



- ◆ Please do not flush into the toilet, newsprint, diaper pad, sanitary napkins and other easily blocked articles.



- ◆ Please do not disassemble, repair or modify this product without permission.

※ It is easy to cause fire or electric shock and cause human injury.
 ※ It must be repaired by professional personnel.



- ◆ Do not touch the power socket with wet hands.

※ Risk of electric shock



- ◆ Do not use loose power sockets; do not scratch, damage, process, bend, stretch, crimp, bind, bear weight, or squeeze excessively.

※ Easy to cause electric shock or fire



- ◆ Please do not hit the ceramic with heavy objects.

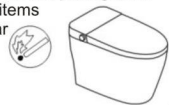
1

Safety Precautions



- ◆ The upper cover, seat ring and seat cover of the whole machine are plastic products. Please do not put cigarette butts and other items with ignition near these parts.

※ Prone to fire



- ◆ Do not use dry cloth or toilet paper to wipe the plastic parts of the upper cover, seat ring and seat cover of the whole machine.

※ Easy to cause surface scratch



- ◆ In case of lightning, please unplug the power supply.

※ Accident prone or malfunction



- ◆ When cleaning and maintaining plastic parts, please do not use unsuitable cleaning agents (bleach, benzene, paint thinner, decontamination powder, cresol, etc.).

※ Fragmentation or corrosion of plastic parts

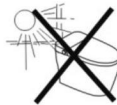


- ◆ Do not use this product in environments below 0°C.



- ◆ Please prevent direct sunlight, or close the heater and heater to the toilet.

※ Can cause the plastic to discolor.

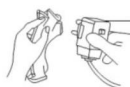


- ◆ In order to prevent damage caused by freezing at night when freezing may occur, please take anti-freezing measures.



- ◆ Please clean the dust on the power plug regularly. Clear remove the power plug and wipe it with a dry cloth.

※ Poor insulation may cause fire



- ◆ When used by persons with physical, perceptual or intellectual disability or lack of experience and common sense (including children), this product should be used under the supervision of a special person. Patients with heart disease should use it with caution.



- ◆ Do not allow children to play with this product.

1

Safety Precautions



- ◆ The installation height of socket shall be above 0.8m from the ground, and shall be as far away as possible from the places easily splashed by water.



- ◆ Do not connect this product to water source other than tap water (ensure water source is clean).

※ May cause skin inflammation, or cause electric shock and fire due to internal corrosion of machinery.

2

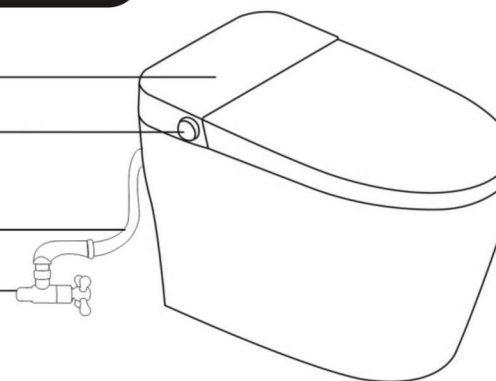
Name Of Each Component

Display screen

Knob (key)

Hose

Angle valve



Note: Subject to the physical object

3

Packing List

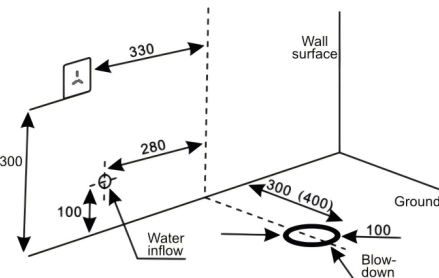
Serial number	Name	Quantity	Remarks
1	Complete machine	One tower	
2	Angle valve	One only	
3	Hose	One strip	
4	Instructions for use	One book	
5	Remote control	One set	
6	Flange ring	One individual	Battery included

Installation Method

① Confirmation of installation environment

1. Before installation, confirm that the wall surface and floor tiles of the toilet have been completed, and the drain pipes, water channels and circuits have been reserved, as shown in the figure. According to the actual pit distance of toilet, select corresponding toilet (300mm pit spacing, 400mm pit spacing). Inlet pressure range: 0.15Mpa (dynamic) - 0.75Mpa (static); inlet water temperature: 4°C -35°C.

2. Install the inlet valve on the wall surface 100mm away from the ground and 280 mm away from the left side of the center of the drain outlet.



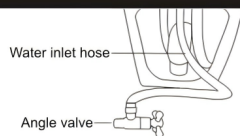
Note: Please use the special water inlet valve attached with this product to install the water outlet pipe. If the user has installed the inlet valve, remove it.

② Install toilet pan

1. Apply a layer of glass glue on the upper and lower end faces of the flange ring and place it on the drain outlet, align the pipe opening at the bottom of the toilet bowl with the flange ring, and gently place the toilet bowl horizontally on the ground from top to bottom.
2. Apply a layer of glass glue also to the connection between the bottom of the toilet and the ground.

③ Water connection

1. Connect the corner valve of the accessory to the wall joint.
2. Connect the water inlet hose to the angle valve.



④Installation precautions

1. Please install the product according to the instructions, otherwise electric shock, fire, personal injury and other damages may occur.
2. Please avoid installation in wet and easily immersed bathroom. Do not spray the product directly with water to prevent damage caused by water.
3. Before installing this product, please confirm whether the power of this product matches with the power socket and power cord wiring.
4. The new hose assembly attached with the appliance shall be used, and the old hose assembly shall not be reused.

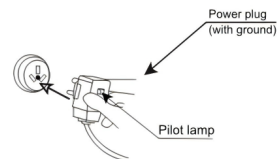
5

Confirmation Before Use

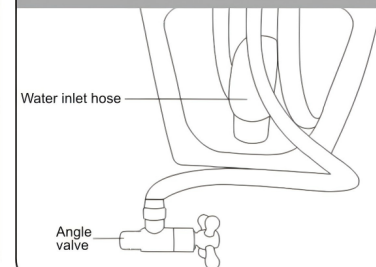
Before using the smart toilet for the first time, please confirm the following items.

① Confirm that the power plug is inserted into the socket

- Plug the power plug into the socket for leakage protection the indicator light of the device is on.



② Confirm that the inlet valve is open

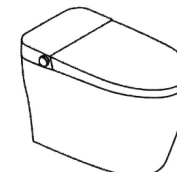


③ Display message confirmation

- Confirm that the toilet display is on.
- Confirm whether the water temperature is on, and press the water temperature adjustment button on the remote control to turn on the water heating.
- Confirm whether the seat temperature is on, and press the seat temperature adjustment button on the remote control to turn on the seat ring heating.

④ Confirm each function

1. Check whether the nozzle and its water pipe are leaking: wipe all parts of the water pipe and check with absorbent paper.
2. Check whether the spray bar self-cleaning (when the human body is not seated), buttocks washing, women's use, drying and automatic deodorization are normal when the human body is seated, water potential, water temperature, seat temperature, whether the air temperature regulation is normal, and the damping structure is no normal.



※ When checking the functions of cleaning, female use, drying and automatic deodorization, it is necessary to confirm that the seat sensing is started. When the buttocks are washed and used by women, cover the front end of the spout with hands to block the spray water to avoid splashing or random spraying.



WARNING

- Do not use a power source other than the information on the nameplate.
- Please conduct wiring according to relevant regulations.

6

Instructions For Use

Seating sensor

The seat ring is equipped with a seat sensor, when the seat is not seated within the effective sensing range of the sensor, the sensor will not work, and many functions such as hip cleaning and female cleaning will not start automatically.

- ※ Please adjust the water temperature according to the temperature of the four seasons.

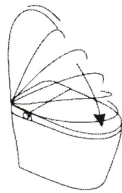
Energy saving function

The following measures can effectively save energy:

- ※ Please close the seat cover after use.
- ※ The seat temperature and water temperature should not be set to high level blindly, but should be adjusted so as not to affect the comfort level.
- ※ Use a device with power saving features.
- ※ Please cut off the power supply when you go out for a long time.

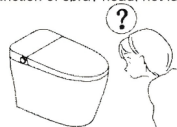
Slowly close the seat ring and cover

The machine is equipped with a damping and gentle lowering system, which can avoid the impact sound when closing the seat ring and seat cover.



There is water flowing out around the nozzle

Before and after cleaning or during self-cleaning of spray bar, there is water overflow around spray head, which is normal in structure and belongs to self-cleaning function of spray head, not fault.



- ※ In addition to the above circumstances, if there is excessive water flow, close the water inlet valve, pull out the power plug from the socket, and contact the shop to solve the problem.

7

Cleaning And Maintenance Methods

Note: During cleaning and maintenance, please turn off the power supply and confirm that the power indicator on the toilet cover panel is off.

Cleaning Of The Outside Of The Machine

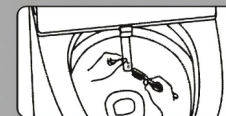
- ※ When cleaning, the power plug must be unplugged first to avoid contact with the plug or water entering the socket.
- ※ When cleaning this product, please wipe it with soft cloth dipped in water. If it still can't be wiped off, wet it with soft cloth and then wipe it with detergent (neutral).
- ※ Do not use unsuitable detergent (banana water, bleaching water, benzene, diluent, decontamination powder, cresol, etc.), can not be directly washed with water or shower head spray wash, to avoid fire caused by short circuit.
- ※ It is recommended to wipe with a wet cloth to prevent static electricity. The product is easy to absorb dust due to static electricity, which makes the product dirty and black and difficult to clean.

▲ A The toilet cover can also be removed from the ceramic body to facilitate cleaning of the part between the toilet cover and the ceramic body (see page 08).

Sprinkler Cleaning

- ※ Nozzle cleaning needs to be done with power on. When a person is not seated, press the remote control "nozzle cleaning" button, and the nozzle will automatically stretch out and stay for 60 seconds.

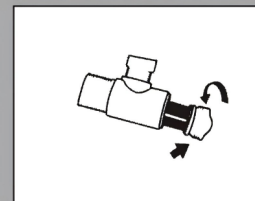
- ※ Use a soft toothbrush to clean the nozzle, during which time you can press the Stop key.



Filter Screen Cleaning

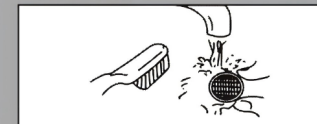
After using the smart toilet for a long time, if you feel that the spray intensity of the sprinkler head or the flushing intensity of the toilet is weakened, please clean the filter screen in the following order. (Washing cycle depends on local water quality)

1. Close the filter angle valve and stop the water supply.
2. Rotate and take out the filter screen from the angle valve.



- ※ A small amount of water will flow out at this time. Please put a basin and other containers under it.

3. Use a small brush and water to wash the dirt attached to the filter screen.



4. Place the filter screen into the angle valve according to the original direction, and then tighten it to ensure it is firm.
5. Open the filter angle valve to supply water to the original position.
6. Finally, please do a trial run.

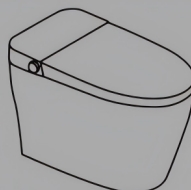
- Be sure to close the inlet valve when removing the filter screen.
- When installing the filter screen, please tighten the water supply hose, otherwise it may cause water leakage and indoor ponding.

7

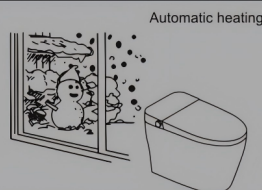
Cleaning And Maintenance Methods

Removal Method Of Toilet Cover

1. Unplug the power plug from the socket.
2. Close the water inlet valve and stop the water supply.
3. Hold both ends of the toilet cover with both hands and lift it up forcefully to separate the toilet cover from the ceramic body.
4. Place the toilet cover lightly on the ceramic body and clean the ceramic body.
5. After cleaning, hold both ends of the toilet cover and cover it on the ceramic body from top to bottom. After placing it to the bottom, a "click" sound indicates that the installation is complete.
6. After fixing, gently shake the toilet cover to the left and right, and confirm whether it is locked firmly.
7. Insert the power plug into the socket and open the water inlet valve to fill the water.



General Freeze Prevention Measures



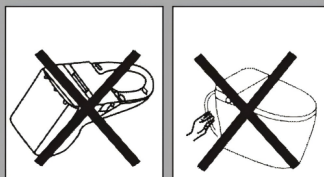
Automatic heating

In cold winter, the smart toilet will be damaged and leaked due to water freezing in order to prevent freezing, please perform the following operations. Do not remove the plug, plug it into the power socket and turn on the power.

※ In order to prevent freezing, the control system will detect indoor temperature below 5 degrees, automatic heating once.

ATTENTION

1. Please do not pull the power cord or toilet water supply hose.
※ Can cause breakage or water leakage.
2. When removing the toilet cover for cleaning, please handle it carefully.
※ It can cause water leakage and malfunction.
3. Do not turn the toilet cover upside down without unplugging the power supply. In addition, do not place directly on the ground.
※ Can cause surface scratches and failures.



8

Troubleshooting

Please check the following items before entrusting maintenance services

Product location or function	Phenomenon	Inspection items	Exclusion method	
Body	Doesn't work at all	Whether the power is not turned on?	Please turn on the power	
		Whether the power plug is plugged in properly?	Please plug in the power plug again	
		Power failure or not?	Check again after power supply is restored	
Hip Wash Cleaning for women	Sprinkler fails to discharge water	Whether the inlet valve is open?	Please open the inlet valve	
		Stop water or not?	Please stop the cleaning function and wait for the water supply to resume and check again	
		Check whether the nozzle is blocked by foreign matters?	Please clean the nozzle and remove foreign matters	
		Check whether the sensor is sensing?	Readjust the sitting position and confirm that the sensor works properly	
	Weak cleaning	Whether to set the intensity to a weak level?	Reset cleaning intensity	
		Whether the water inlet channel is smooth?	Please clean the inlet filter	
	Water cut off midway	Set whether the cleaning time has expired. The cleaning time of this machine is 120 seconds.	Please wait 3 minutes before starting the cleaning function.	
		Is the sensor sensitive?	Readjust your sitting position and confirm that the sensor is working properly	
	low water temperature	Is the water temperature setting low?	Please press the "Water Temperature" button to adjust the water temperature	
	Warm air temperature is low	Is the air temperature set to low temperature?	Please press the "Air Temperature" button to adjust the air temperature	
warm air drying	Warm air stops midway	Whether to automatically stop the drying time	Please activate the drying function again	
		Is the sensor sensitive?	Readjust your sitting position and confirm that the sensor is working properly	
Seat heating	The seat temperature is not enough	Is the seat temperature set to low level?	Please press the "seat temperature" button to adjust the seat temperature	
		Is energy saving turned on?	Readjust the seat temperature	
Buzzer abnormal alarm	The water temperature icon flashes and the buzzer alarms.	Unplug the power plug and reconnect the power supply. If the fault persists, please cut off the power supply and contact the manufacturer or local maintenance agency.		
	The seat temperature icon flashes and the buzzer alarms.			
	All indicators flash and the buzzer alarms	Turn off the power, check whether the water supply is outage, and then turn on the power again after the water supply is restored.		
	Water leaks from the body	Turn off the water valve to stop the water supply, check the water supply, check whether the water supply pipe is damaged, and contact the manufacturer or local maintenance agency.		
error indication	Indicates component failure status through the number of flashes of the night light or the display			
	Water temperature sensor failure:	Flash 1 time E1	Seat temperature sensor failure:	Flash 2 times E2
	Drying fan failure:	Flash 3 times E3	Instant hot module communication failure:	Flash 4 times E4
	Ambient temperature sensor failure:	Flash 5 times E5	Instant thermal module overheating protection:	Flash 6 times E6
	Water heater failure:	Flash 7 times E7	Cleaning water shortage fault:	Flash 8 times E8
	Instant hot module strong current failure:	Flash 9 times E9		

Power cord replacement instructions: If the power cord is damaged, please contact the product manufacturer for repair and replacement.

Name		
Nominal voltage		The information on the nameplate shall prevail
Rated power		The information on the nameplate shall prevail
Wire length		1.5m
Water supply pressure		0.15Mpa (dynamic pressure) ~ 0.75 Mpa (static pressure) (1.5~7.5 kg/cm ²)
Cleaner	Washing water volume	The maximum flow rate of buttock cleaning is 0.75L/min
		Maximum cleaning flow for women is 0.85L/min
	Water pressure regulation	Four levels each for hip cleaning and women's cleaning, controlled by computer
	Temperature adjustment	4th adjustment (no heating, approx. 34 ± 1°C, approx. 37 ± 1°C, approx. 40 ± 1°C)
	Maximum power	1600W
	Security apparatus	Water temperature sensor, overheating block, temperature fuse
Seat	Maximum power	50W
	Buffering function	Slowly and gently lower the toilet seat and lid when opening and closing
	Temperature adjustment	4th adjustment (no heating, approx. 34 ± 2°C, approx. 37 ± 2°C, approx. 40 ± 2°C)
	Security apparatus	Seat temperature sensor, temperature fuse
Drying	Maximum power	300W
	Temperature adjustment	Gear 4 regulation (no heating, approx. 45 ± 5°C, approx. 50 ± 5°C, approx. 55 ± 5°C)
	Security apparatus	Fan locked-rotor protection, overheating protection, temperature fuse
Rinsing mode		Jet siphon
Ambient temperature		5~45°C

Implementation criteria: GB4706.1-2005 GB4706.53-2008 GB25502-2017
 Note: When the water pressure is lower than 0.2Mpa, it is recommended that the user install booster pump, otherwise it may affect your normal use.

Product Warranty Card

Thank you for purchasing our products. In order to protect your rights and interests, we guarantee as follows: Please contact the purchasing department or our after-sales service department when you find quality problems.

Product	Intelligent Toilet	Product Model	
Date Of Purchase		Serial Number	
Customer Name		Term Of Service	Effective From The Date Of Purchase
Contact Address			
Maintenance Record	Fault And Treatment	Date Of Repair	Maintenance Personnel

User retention coupon

Matters related to product guarantee

- * Please fill in the product warranty carefully when purchasing this product and keep it properly.
- * Within 30 days from the date of purchase, if the product is found to have quality problems under normal use, the company will be responsible for replacement after being certified by the company's technical personnel.
- * During the warranty period, the company will repair for you for free if there are any faults under normal use mentioned in the operating instructions, precautions and labels.
- * For services within the scope of paid maintenance services incurred during the warranty period, maintenance fees will be charged as appropriate.

Paid maintenance services

- * Failure and damage caused by improper use or human after installation.
- * Failure caused by unauthorized disassembly or modification.
- * Faults caused by natural disasters such as fire, typhoon, flood, earthquake, lightning and abnormal voltage.
- * Move the machine to install according to the customer's requirements.
- * The service life of consumable parts is exhausted.
- * The product has been repaired by technicians not recognized by the company.
- * Malfunctions and injuries caused by use outside ordinary homes (e.g. public places).

Please fill in the warranty card information completely, tear off the "user receipt" and send it back to the company, otherwise you will not enjoy the warranty policy!

User Name		Contact Number	
Contact Address			
Purchase Store		Date Of Purchase	
Product Model		Degree Of Satisfaction	<input type="radio"/> Satisfied <input type="radio"/> Generally <input type="radio"/> Not satisfied
Serial Number		Customer Signature	

User retention coupon