



Lyric® Workstation

top-/under-mount single-bowl kitchen sink
K-RH23374-4PC

Features

- Accessories stack and slide to enhance food prep and cleanup.
- Includes two-piece colander set and large acacia wood cutting board.
- 36" minimum base cabinet width.
- Single bowl.
- 9" depth provides generous workspace.
- Three faucet holes with one accessory hole to the right.
- Handcrafted, tightly angled fabricated corners maximize basin space.
- SilentShield® sound-absorption technology offers quieter performance.
- Optional K-21616 sink rack (sold separately).
- Strainer not included.

Material

- Handcrafted from 18-gauge stainless steel.
- Colander set is dishwasher safe.

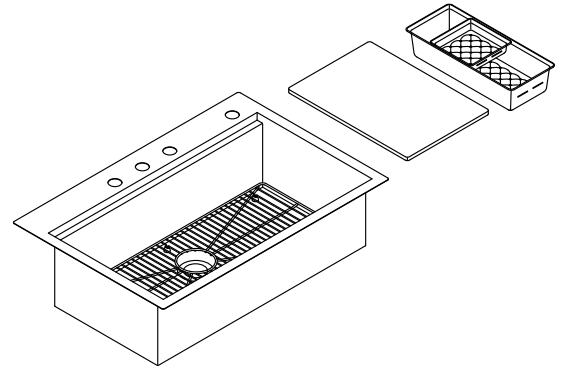
Installation

- Top-mount or under-mount.
- Accessories slide on sink ledges when sink is top-mounted.
- Cutting board slides across the countertop when sink is under-mounted.

Included Components

Additional Components:

21614-CH1
23379-NA



Codes/Standards

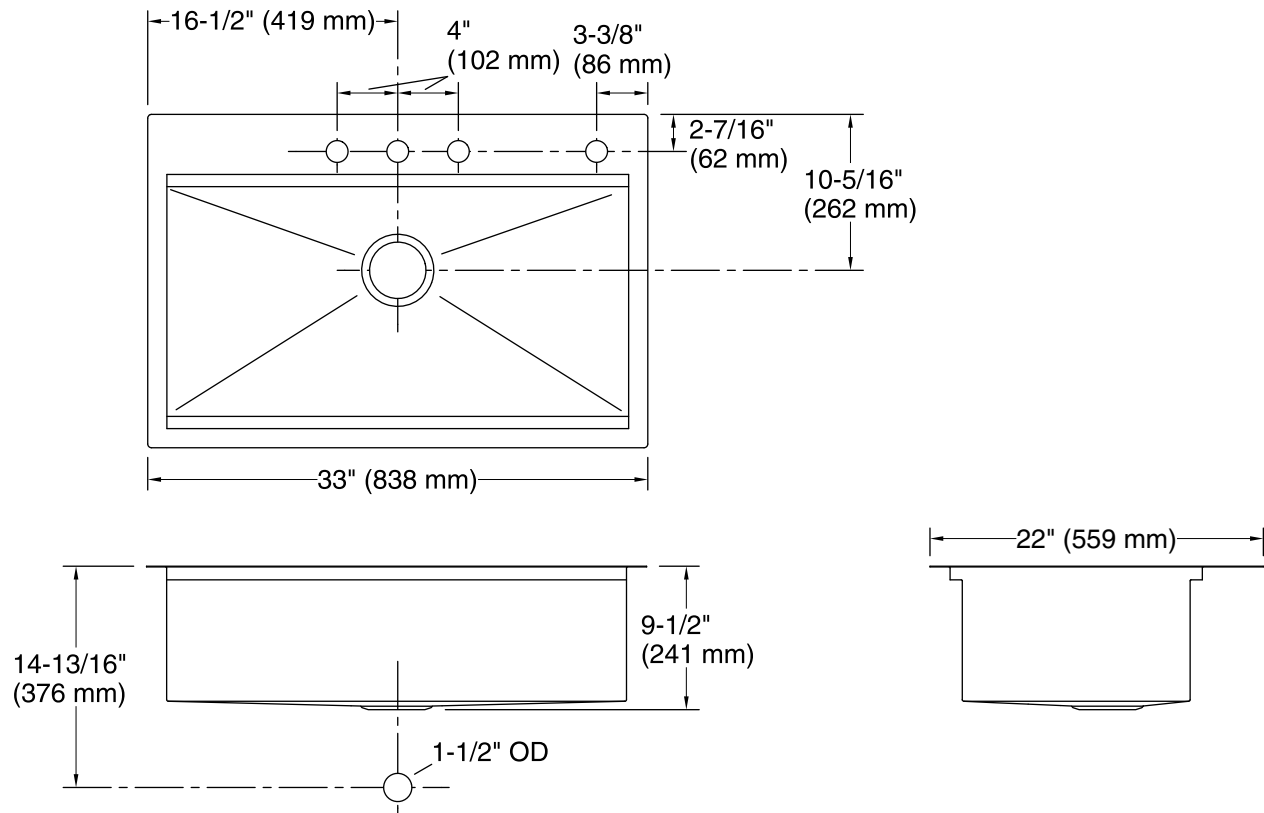
ASME A112.19.3/CSA B45.4

Lifetime Limited Warranty for KOHLER® Stainless Steel Sinks

See website for detailed warranty information.



Lyric® Workstation
top-/under-mount single-bowl kitchen sink
K-RH23374-4PC



Technical Information

All product dimensions are nominal.

Bowl configuration: Single

Installation: Top-mount, Under-mount

Min. base cabinet width: 36" (914 mm)

Bowl area (Only): Length: 30-1/4" (768 mm)
Width: 15" (381 mm)
Bowl depth: 9-3/16" (233 mm)
Water depth: 9-3/16" (233 mm)

Number of deck holes: 4

Faucet hole spacing: 8" (203 mm)

Faucet hole(s): 1-7/16" (37 mm)

Soap/Lotion hole: 1-7/16" (37 mm)

Drain hole: 3-3/4" (94 mm)

Template: Top-mount/Under-mount, 1130821-7,
required, included

Notes

Install this product according to the installation instructions.

NOTICE: Countertop manufacturer or cutter must use the cut-out template provided with the product, or a current one provided by Kohler Co. (call 1-800-4-KOHLER). Kohler Co. is not responsible for cutout errors when the incorrect cut-out template is used.