



HYBRID RESILIENT PLANK FLOORING

GENERAL INSTRUCTIONS

Preparing the floor: For best results, installation must be performed on a stable, flat, dry and dust-free clean surface. Subfloor flatness tolerance is 3/16 in (4.7 mm) over 10 ft (3.04 m) and should not slope more than 1 in (2.5 cm) per 6 ft (1.82 m) in any direction. Cabinetry should be installed first, then the flooring.

Acclimation: The installation of this flooring does not require acclimation if product is stored and installed in a temperature range of 50 °F - 100 °F (10 °C - 37.7 °C). If storage temperatures are outside of this range, flooring should be acclimated for 12 hours. Post installation temperature range can be between -25 °F to 160 °F.

Color variations: Slight shade variations may occur during manufacturing. For best results, it is recommended to mix several cartons to properly blend the shade.

Installation guidelines: Product is intended for interior installations only and in temperature controlled homes and rooms. Do not install over carpet, or in saunas, seasonal porches, camping trailers, boats, and RVs. homedepot.com/lifeproof • 1-714-685-7568



MANUFACTURER'S REQUIRED MINNESOTA DISCLOSURE – IMPORTANT HEALTH NOTICE:

SOME OF THE BUILDING MATERIALS USED IN THIS HOME (OR THESE BUILDING MATERIALS) EMIT FORMALDEHYDE. EYE, NOSE, AND THROAT IRRITATION, HEADACHE, NAUSEA AND A VARIETY OF ASTHMA-LIKE SYMPTOMS, INCLUDING SHORTNESS OF BREATH, HAVE BEEN REPORTED AS A RESULT OF FORMALDEHYDE EXPOSURE. ELDERLY PERSONS AND YOUNG CHILDREN, AS WELL AS ANYONE WITH A HISTORY OF ASTHMA, ALLERGIES OR LUNG PROBLEMS, MAY BE AT GREATER RISK. RESEARCH IS CONTINUING ON THE POSSIBLE LONG-TERM EFFECTS OF EXPOSURE TO FORMALDEHYDE. REDUCED VENTILATION MAY ALLOW FORMALDEHYDE AND OTHER CONTAMINANTS TO ACCUMULATE IN THE INDOOR AIR. HIGH INDOOR TEMPERATURES AND HUMIDITY RAISE FORMALDEHYDE LEVELS. WHEN A HOME IS TO BE LOCATED IN AREAS SUBJECT TO EXTREME SUMMER TEMPERATURES, AN AIR-CONDITIONING SYSTEM CAN BE USED TO CONTROL INDOOR TEMPERATURE LEVELS. OTHER MEANS OF CONTROLLED MECHANICAL VENTILATION CAN BE USED TO REDUCE LEVELS OF FORMALDEHYDE AND OTHER INDOOR CONTAMINANTS. IF YOU HAVE ANY QUESTIONS REGARDING THE HEALTH EFFECTS OF FORMALDEHYDE, CONSULT YOUR DOCTOR OR LOCAL HEALTH DEPARTMENT.



IMPORTANT:

This Lifeproof flooring is intended for a floating installation only. Do not glue, nail or attach in any other way to your existing subfloor. Cabinets and kitchen islands should be installed prior to the flooring.



CAUTION:

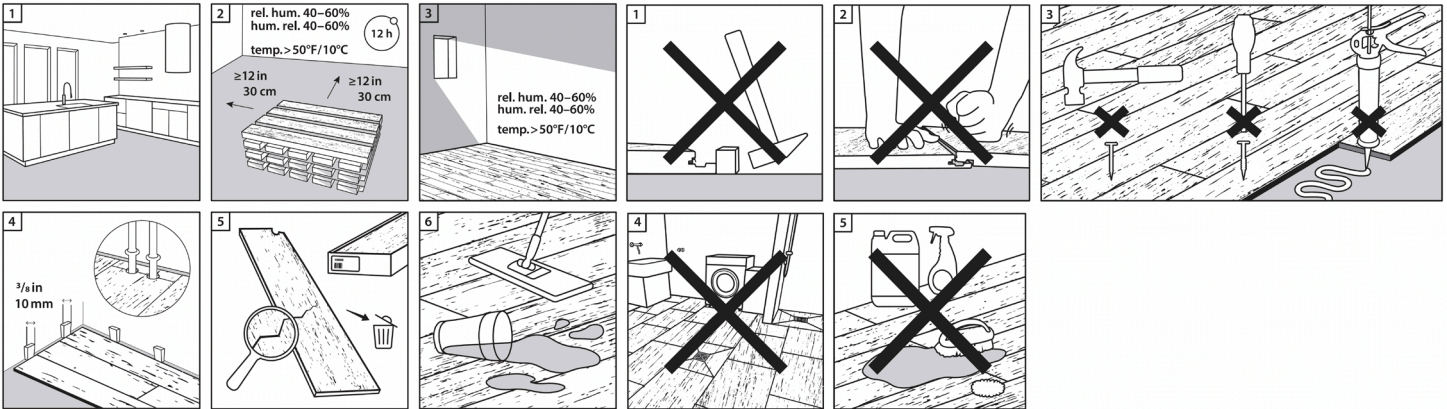
- Use safety glasses and gloves when cutting flooring planks. Flooring planks will create wood dust; always cut the product in a well ventilated area
- Never tap flooring planks during installation
- Never use tools designed for other flooring installation systems
- Never wax, polish, or use abrasive cleaners on this flooring
- This flooring product is not suitable for use in areas where the floor is prone to continuous moisture, such as but not limited to, steam rooms and saunas. Do not install in rooms that have floor drains or sump pumps

WARRANTY

This flooring product comes with a manufacturer Limited Wear Warranty. The warranty applies to the original purchaser of the flooring. It warrants the original purchaser that the finish surface will not wear through for the duration of the stated warranty from the date of

purchase. Contact our Customer Service Team at 1-714-685-7568 to request a written copy which provides detailed terms of coverage and limitations.

DO'S AND DONT'S



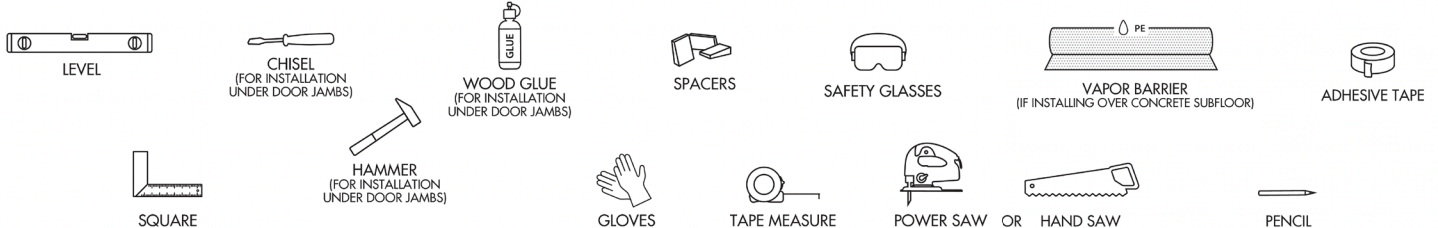
DO'S

1. DO install cabinets and kitchen islands before installing floor.
2. DO acclimate unopened boxes of flooring for 12 hours before installation if it was stored in temperatures outside of the stated range (50 °F - 100 °F).
3. DO install in climate-controlled environment - min. 50 °F (10 °C); Min. RH: 40-60%.
4. DO leave a 1/2 in (12.7 mm) expansion space around entire perimeter of installation and any vertical objects. Use spacers to assist.
5. DO inspect every plank for damage before installing it.
6. DO remove spills immediately.

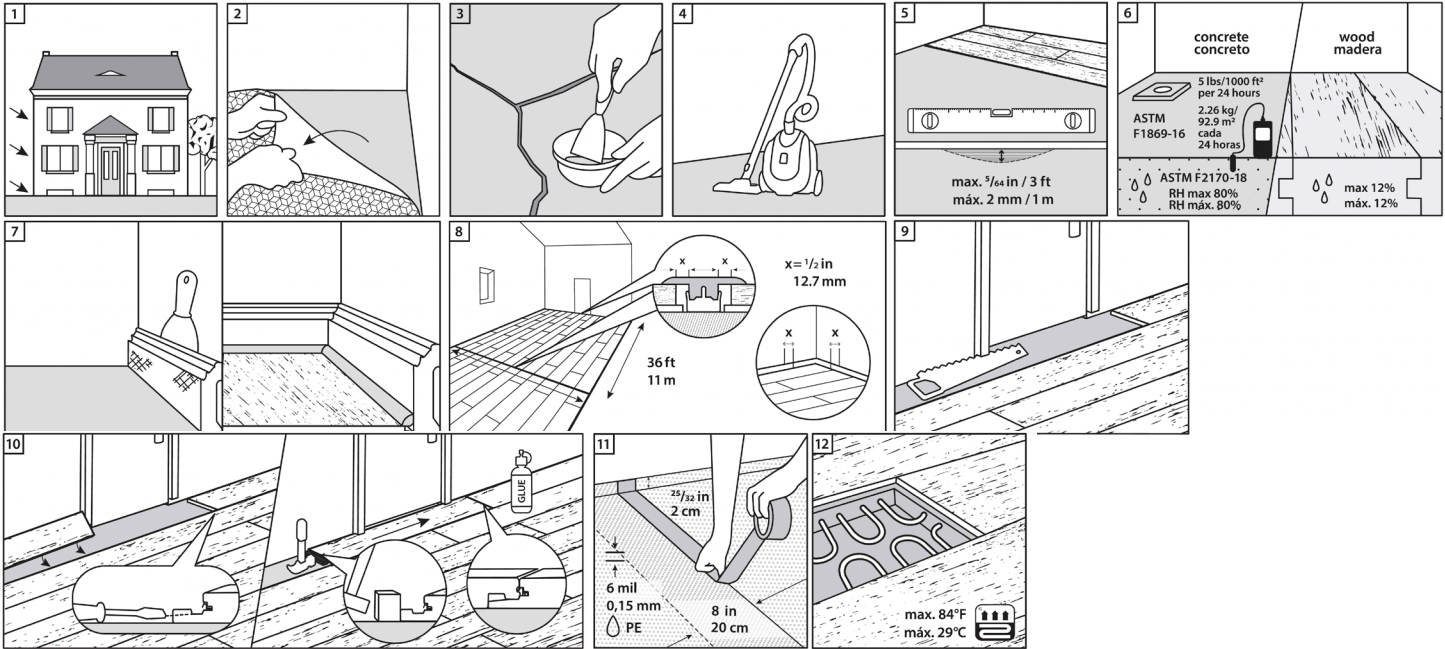
DONT'S

1. DO NOT use a tapping block or other tapping tools to install this floor. Tapping this product will damage it. Use of a block is allowed only when installing modified planks as described in step #10 of the Installation Preparation section of this guide.
2. DO NOT use excessive force to connect planks together. If planks are not connecting easily, check for damage or debris in the locking mechanism.
3. DO NOT glue, nail or attach flooring in any way to your subfloor.
4. DO NOT use excessive liquid when cleaning.
5. DO NOT use abrasive cleaning solutions, lacquers, polishes, waxes or detergent based cleaners.

REQUIRED TOOLS AND SUPPLIES

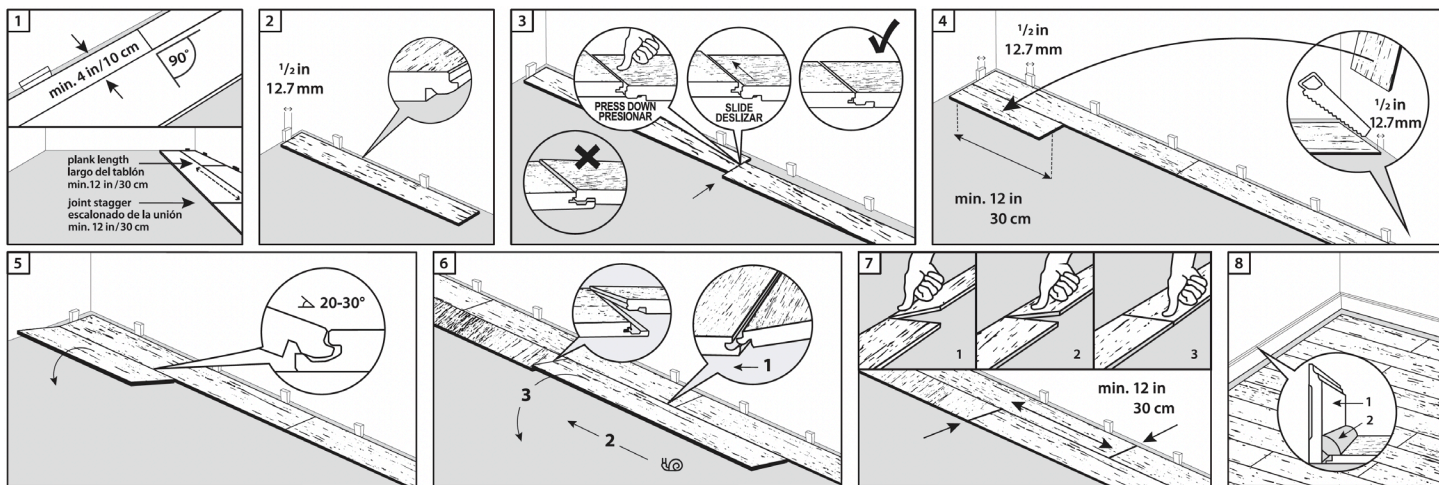


INSTALLATION PREPARATION



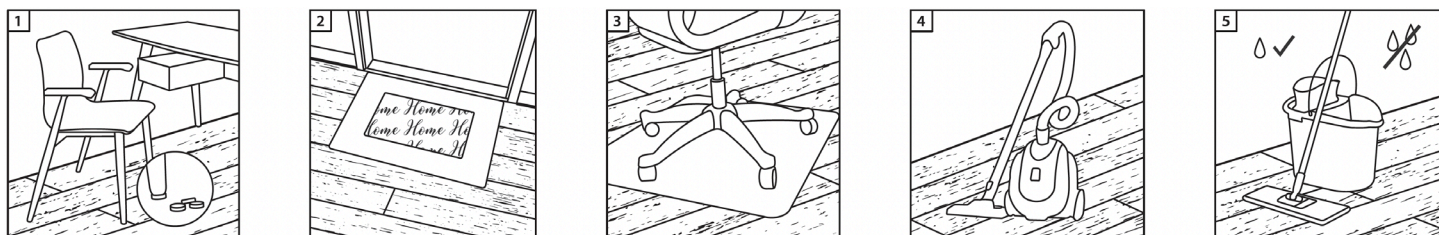
1. This product is designed for use in dry interior climate controlled rooms and can be installed above, on, or below grade.
2. Remove carpet, carpet pad and carpet tack before installation. Remove wood subfloors installed over concrete. Remove heavily cushioned surfaces (eg. cushion-vinyl). DO NOT remove previously installed flooring that contains asbestos.
3. Ensure subfloor is structurally sound. Repair all squeaks and creaks.
4. Clean subfloor before installation to ensure it is free of debris.
5. Subfloor must be flat to 5/64 in per 3 ft (2 mm/m). Sand/grind raised areas and fill depressed areas with leveling compound.
6. Perform a subfloor moisture test before installing floor. Wood subfloors moisture cannot exceed 12%. Concrete subfloor moisture emissions cannot exceed 5.0 lbs/1000 ft² (2.26 kg/92.9 m²) per 24 hours (calcium chloride test – ASTM 1869) or must be less than 80% RH (in situ probe test – ASTM F2170).
7. Remove baseboards and trim if desired. If not removing baseboards use quarter round mouldings to conceal expansion space once installation is complete.
8. Installation length or width cannot exceed 36 ft (11 m). If your installation exceeds the length/width requirements use T-moldings. Use T-moldings to separate installation rooms/areas.
9. Undercut door jambs so flooring planks and underlay fit under it. Make sure to leave 1/2 in (12.7 mm) expansion space under the door jamb.
10. When installing under door jambs or other locations that prevent angling planks during assembly, carefully trim the vertical section of the plank's groove so planks can be connected by horizontally sliding them together. Place a small bead of wood-glue on the trimmed plank's groove to hold planks together. CAUTION!! Lightly tapping against a block as shown may help slide modified planks under door jambs. This method should only be used when installing modified planks as described in this step.
11. If installing over concrete subfloor, install vapor barrier. Overlap vapor barrier edges by 8 in (20 cm) and seal with adhesive tape.
12. Flooring can be installed over hydronic radiant heat systems only and must have a minimum of 1/2 in (12 mm) separation from the product. Maximum operating temperature should never exceed 84 °F (29 °C). The systems must be in operation for a minimum 3 weeks prior to installation of flooring. Ensure subfloor meets moisture content requirements.

ASSEMBLY INSTRUCTIONS



1. Check the wall you are installing against to ensure it is straight. If it is not, cut the long edge of the first row to fit wall irregularities. Minimum plank width for first and last rows must be 4 in (10 cm). Minimum plank length for first and last planks in a row should be 12 in (30 cm). Plank joints must be offset by minimum 12 in (30 cm).
2. Select a starting corner and work from left to right. Place long-edge tongue of first plank against wall using 1/2 in (12.7 mm) spacer.
3. Place second plank so its short edge tongue overlaps the first plank's short edge groove by half the width of the plank. Press down on the second plank to engage the locking mechanism (there should be no height differences between the two planks). Slide the second plank horizontally towards the wall until the two planks' long edges are aligned.
4. Continue in this manner to complete the row. Cut the last plank to fit and remember to leave 1/2 in (12.7 mm) expansion space between it and the wall. Use the remainder of the last plank to start the next row provided it is longer than 12 in (30 cm). Plank joints must be offset by a minimum of 12 in (30 cm).
5. To connect the first plank of the second row, insert its long edge tongue into the first row's long edge groove at a 20°-30° angle - then slowly lower it to lock planks together.
6. Install remaining planks by first connecting their long edge tongue to the previous row's long edge groove as described above, but before lowering the plank, slide it to the left so that its short edge tongue is overlapping the previous plank's short end groove.
7. Lower the plank so the two short edges will fit into each other, then apply pressure on the short end to lock the planks together.
8. Once your installation is complete, remove all spacers and install finishing trim.

CLEANING AND CARE



1. Use protective felt pads under all furniture feet.
2. Place mats and area rugs at main entrances to minimize abrasive debris.
3. Use protective mats under wheeled office-type chairs.
4. Dust mop or vacuum with a hard surface attachment to remove dust, loose dirt or debris.
5. If necessary, use a water-based flooring cleaner. Lightly mist cleaner onto floor surface and wipe up immediately.
6. This flooring is waterproof, but care should be taken whenever the potential for moisture is present.
7. If using a steam cleaner, use on the lowest setting and avoid leaving it in the same spot for prolonged periods.

WET AREAS:

Do not install in saunas, swimming pool areas and other similar extreme wet areas. It is recommended when installing in a wet area such as a kitchen, bathroom, laundry room or entryway, to seal all expansion spaces with 100% flexible silicone caulk. NOTE: Do not use acrylic-based caulks.