

Features

- Featuring durable, beautiful water-based finishes that are better for the environment.
- Wall-hung design offers a clean, streamlined look.
- Solid wood drawers with dovetail construction.
- Soft-close undermount drawer slides for smooth opening.
- Two full-extension 21" (533 mm) deep drawers, plus split-interior center drawer, provide ample storage.
- Customize your storage with optional accessories such as electrical outlets, drawer organizers, and containers (sold separately).
- Coordinates with K-33568 Lodern 11" (279 mm) and K-27939 Lodern 15" (381 mm) cabinet pulls (sold separately).
- Combines with Silestone® prefabricated quartz vanity tops, backsplashes, and side splashes, and KOHLER sinks (sold separately).

Material

- Solid wood, plywood, and moisture-resistant MDF.
- The nature of wood grain can cause variations in stain depth. Our expert craftspeople hand-apply the stain to blend these variations.

Installation

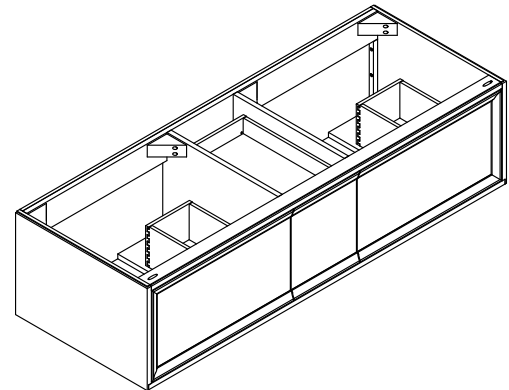
- Professional installation recommended.

Recommended Products/Accessories

- K-33568 11" drawer pull
- K-28255 Silestone® quartz 61" vanity top with rectangle cutouts
- K-28265 Silestone® quartz 61" backsplash
- K-27939 15" drawer pull (Qty 2)
- K-2882 Undermount bathroom sink (Qty 2)

Optional Products/Accessories

- K-28256 Silestone® quartz 61" vanity top with oval cutouts
- K-28257 Silestone® quartz 61" top w/Carillon® Rectangle cutouts
- K-28266 Silestone® quartz side splash
- K-2881 Undermount bathroom sink (Qty 2)
- K-7799 Vessel bathroom sink (Qty 2)
- K-99682 General storage package for KOHLER Tailored® vanities
- K-99683 Makeup storage package for KOHLER Tailored® vanities
- K-99684 Drawer divider package for KOHLER Tailored® vanities
- K-99566 In-drawer electrical outlets for vanities
- K-23736 Furniture polish
- K-99676 Filler strip for KOHLER Tailored® vanities



Codes/Standards


None Applicable

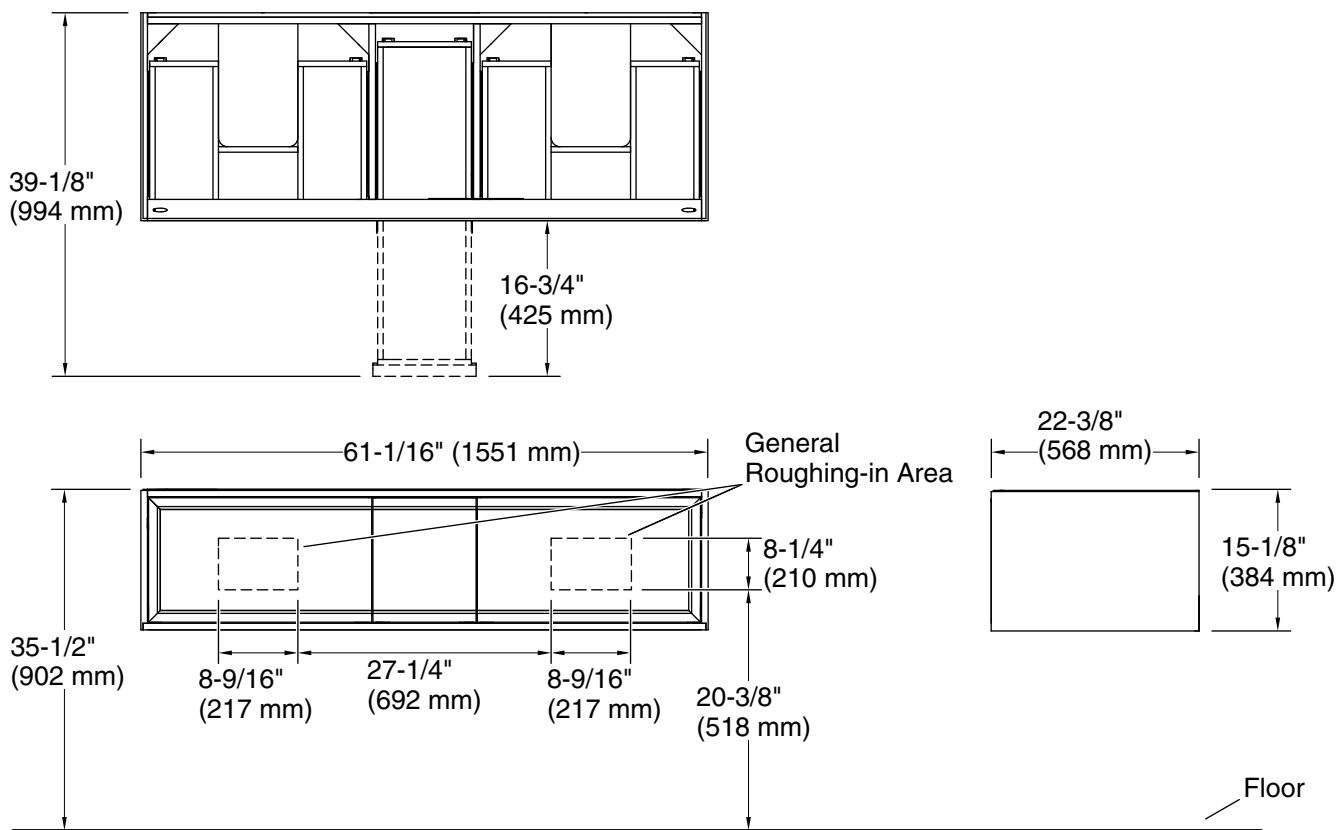
KOHLER® One-Year Limited Warranty

See website for detailed warranty information.

Available Colors/Finishes

Color tiles intended for reference only.

Color	Code	Description
	1WA	Linen White
	1WX	



Technical Information

All product dimensions are nominal.

Notes

Install this product according to the installation instructions.