

kobiworks



RADIANCE

Frameless Single Sliding Door



Questions?

Customer Support: **+1 909-276-7014**
Operation Hours: **8am-5pm Mon-Fri**
PST

Complicated Stuff?

cs@kobiworks.com



General Information



Threshold for the **RADIANCE** model has to be at least **2-5/8"** wide for the entire shower to fit.

Out Of Plumb tolerance is 1/4" which can be adjusted on the rollers.



Note:

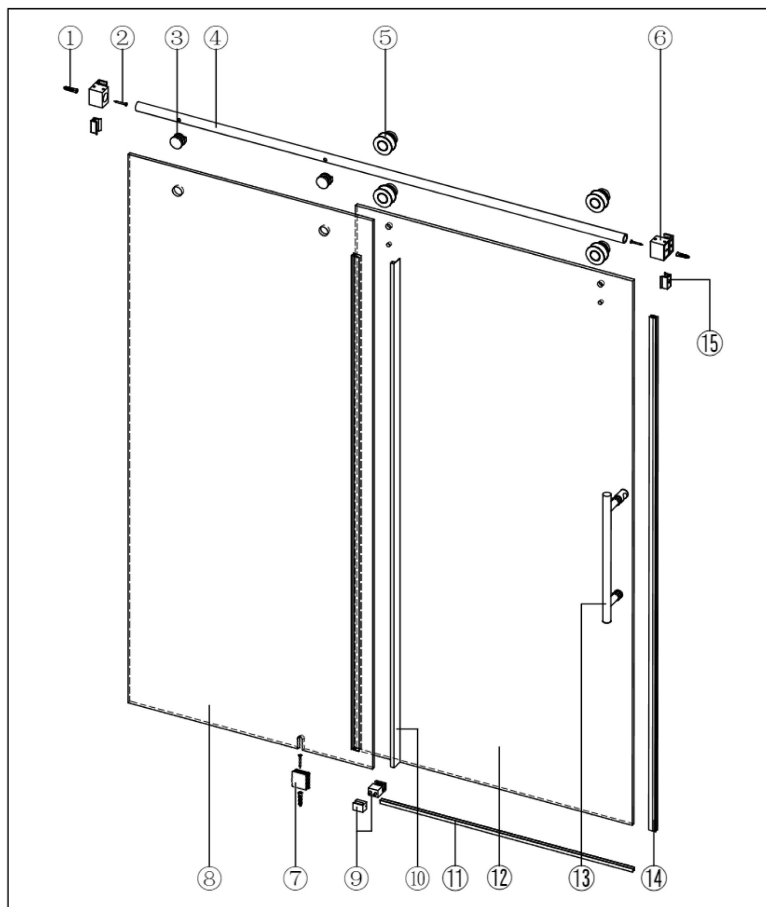
- Installation of this shower door requires the threshold to be drilled (1 hole), contact the manufacturer of the base in regards to any questions related drilling holes into their products.
- Recommend using waterproof, mildew-resistant silicone caulk.
- Recommend caulking each drilled holes to waterproof further.
- Professional Installation Recommended.
- Minimum two installers required.













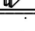
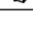
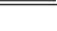
Summary:

1. Measuring the opening space.
2. Punch the holes by template or by height.
3. Install wall brackets.
4. Install header bar.
5. Mount the fixed panel and install it with the clamp.
6. Lock the fixed panel with the bar by using the glass fastener (ITEM 3)
7. Mount the guide block on the fixed panel.
8. Mount the glass door with the rollers on, on the inside or outside, it's reversible.
9. Apply the PVC seals on both ends.
10. Install the threshold with silicone.



Diagram



NO.	Name	Picture	Qty	NO.	Name	Picture	Qty
1	8mm Wall plug		3	9	Guide block		1
2	screw ST5x40		3	10	Fixed panel seal		1
3	Glass fastener		2	11	Anti-splash threshold		1
4	Guide Rail		1	12	Sliding door		1
5	Roller (Ø55 or Ø70)		4	13	Handle		1
6	Wall bracket		2	14	Door seal		2
7	Wall mount bracket		1	15	Anti Collision Block		2
8	Fixed panel		1	16			

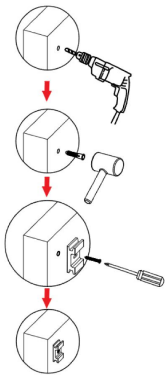
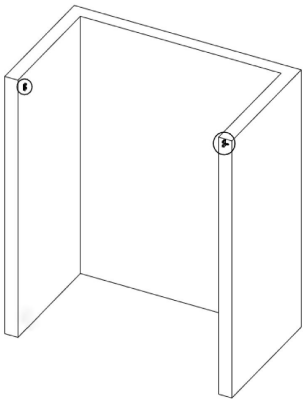
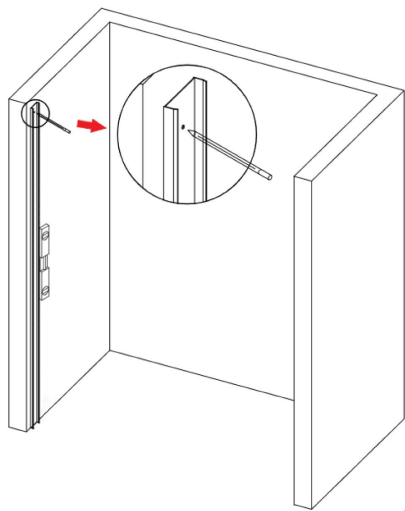
Step 1.

Using the provided drilling template, mark the holes and drill the holes using a drill bit in your case. Mount the wall brackets.

Please make sure the template is placed level, making sure the header bar location will match the glass in case of given a wrong measurement.

For hole locations, please read and compare the locations on the chart.

Product Height	A
60"	56 1/4"
66"	62 1/4"
72"	68 1/4"
76"	72 1/4"
79"	75 1/4"

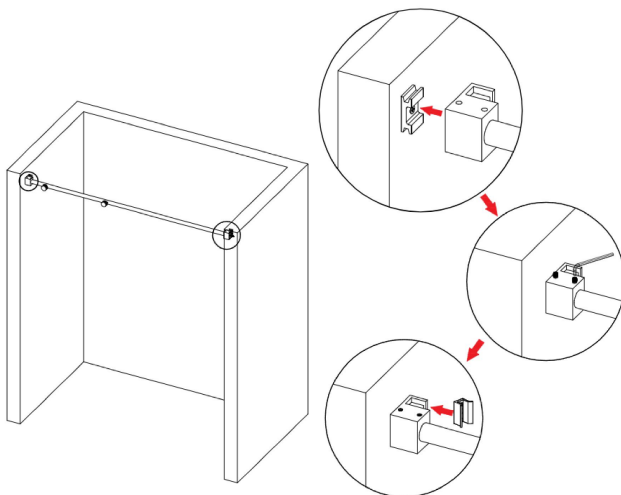
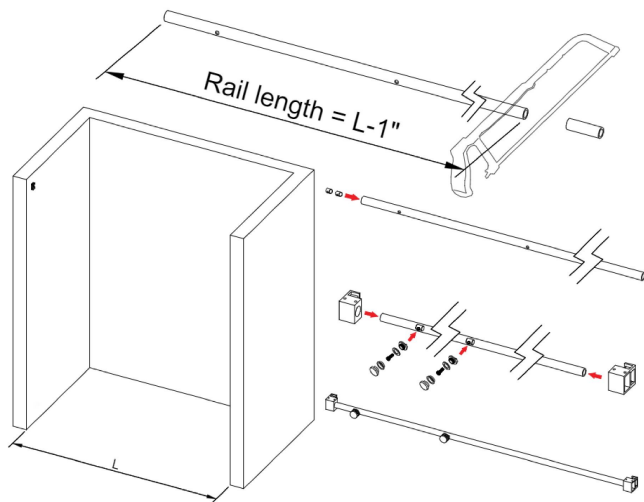


Step 2.

Cut the header bar to your top-opening minus 1".

Mount the bracket afterwards.

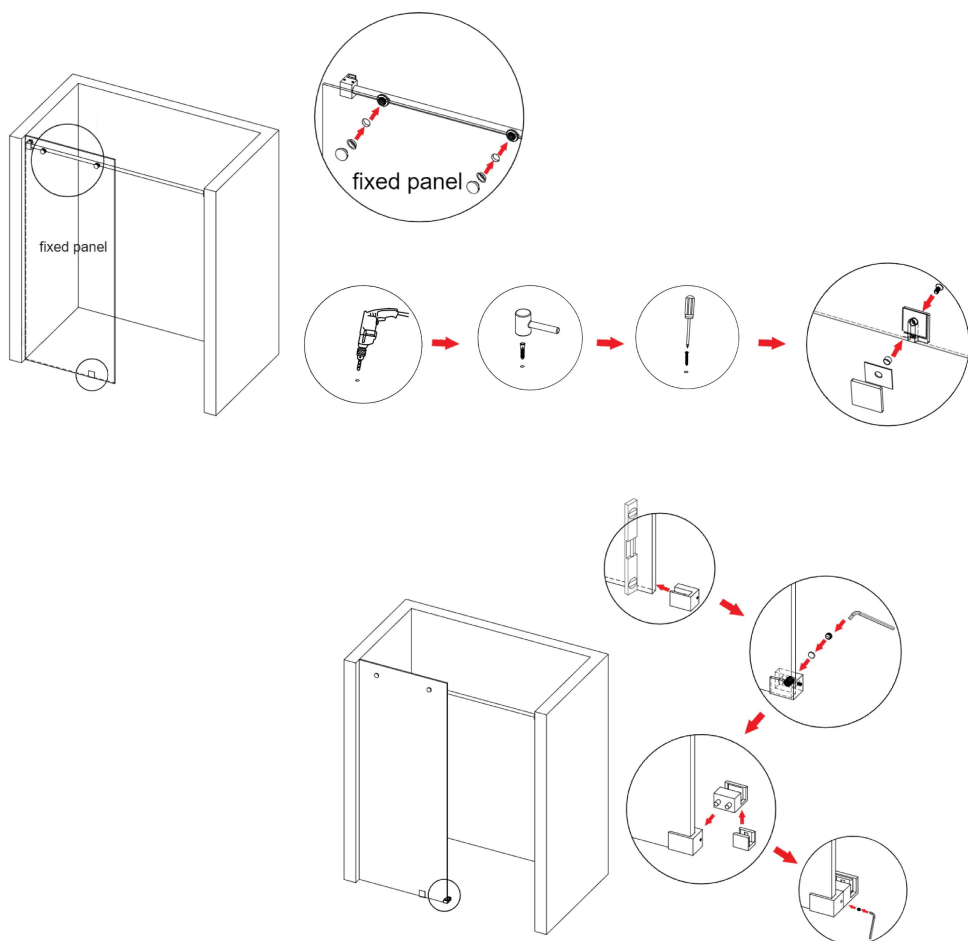
Installation
Video



Step 3.

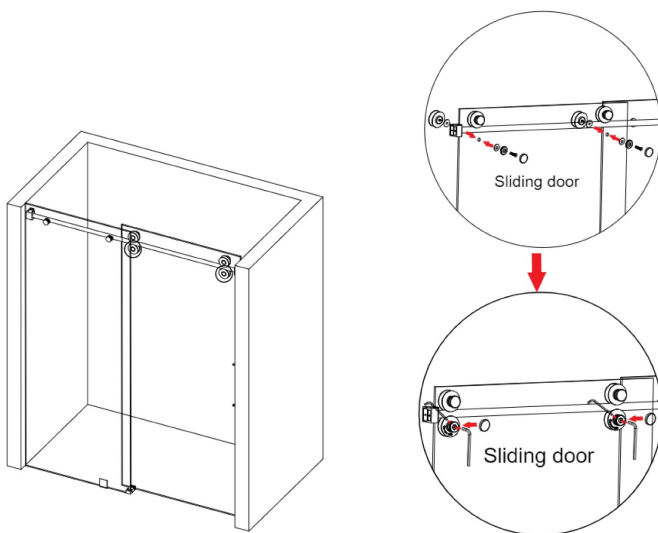
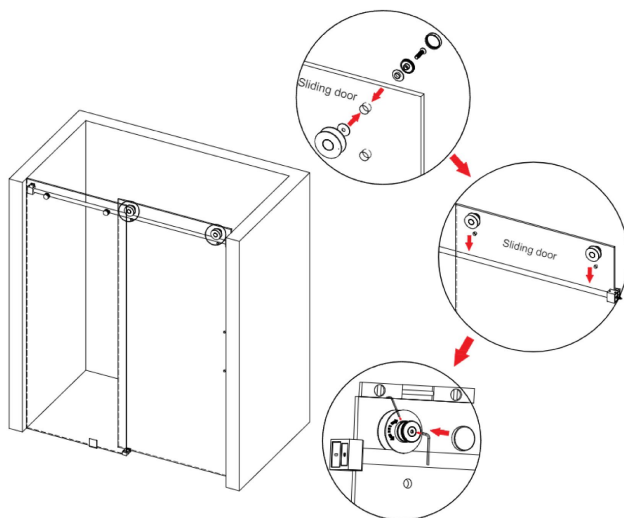
Mount the fixed panel glass and secure it on the header bar. Mark the clip, drill the hole for the clip then install the clip as well on a plumb fixed panel.

After that's done, install the guide block onto the fixed panel.



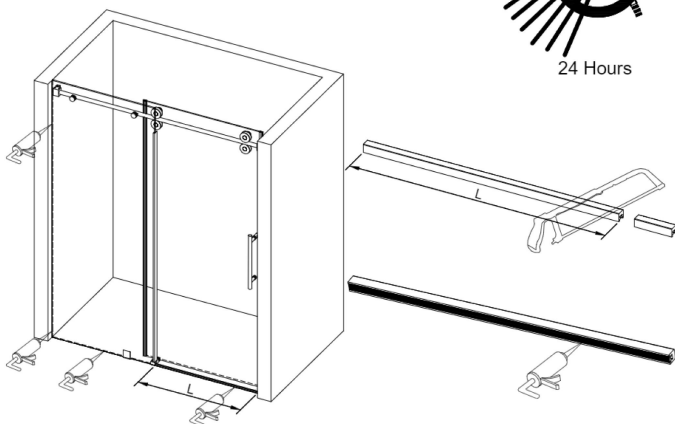
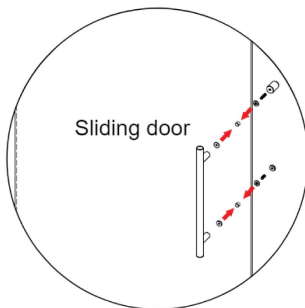
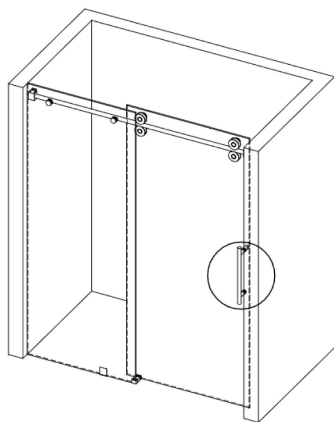
Step 4.

Mount the rollers on the glass, and mount the glass on the header bar. Our rollers can adjust up to 1/4" out-of-plumb walls.



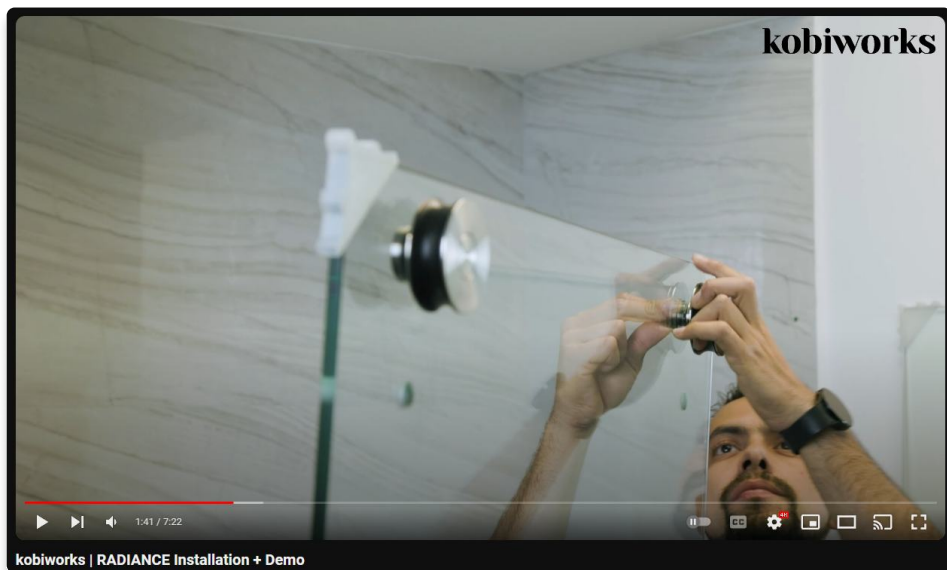
Step 5.

Mount the the handle and PVC on both ends. Install the threshold to the length of your opening with silicone.





Watch out! We have an installation video on YouTube too!



Additional Resources

Website: <https://kobiworks.com>

Address: 1265 S. Johnson Dr, City Of Industry, CA 91745



Questions?

Customer Support: **+1 909-276-7014**

Operation Hours: **8am-5pm Mon-Fri**
PST

Complicated Stuff?

cs@kobiworks.com



