



## Main

Marketing Trade Name	QO
Product	Enclosure
Enclosure Type	Weatherproof enclosure

## Complementary

Tightening Torque	35 lb.in, AWG 14...AWG 10, copper 35 lb.in, AWG 12...AWG10, aluminium 40 lb.in, AWG 8...AWG 4, aluminium/copper 50 lb.in, AWG 3...AWG 2, aluminium/copper Main lugs 50 lb.in, AWG 3...AWG 1, aluminium/copper
Rated Current	100 A
Number of Spaces	2
Max Short Circuit Current Rating	22 kA
Maximum Number of Single Pole Circuits	2
Maximum Number of Tandem Breakers	0
Number of Phases	1 phase
Wire Size	AWG 14...AWG 1 copper
Grounding Bar	Grounding bar (ordered separately)
Electrical Connection	Lugs
Wiring Configuration	3-wire
Busbar Material	Tin plated copper busbar
Enclosure Material	Welded galvanized steel
Cover Finish	Baked enamel Gray
Box Number	10R
Height	13.19 in (335 mm)
Width	6.93 in (176 mm)

## Environment

Enclosure Rating	NEMA 3R outdoor
Product Certifications	UL Listed

## Ordering and shipping details

Category	00005 - QO,Q2L 2P ENCL & BREAKERS
Discount Schedule	DE2A
GTIN	00785901051749
Nbr. of units in pkg.	1
Package weight(Lbs)	8.05 lb(US) (3.65 kg)
Returnability	Yes
Country of origin	MX

## Packing Units

Unit Type of Package 1	PCE
Package 1 Height	5.00 in (12.7 cm)
Package 1 width	14.50 in (36.83 cm)
Package 1 Length	7.90 in (20.066 cm)
Package 2 Weight	907.00 lb(US) (411.408 kg)

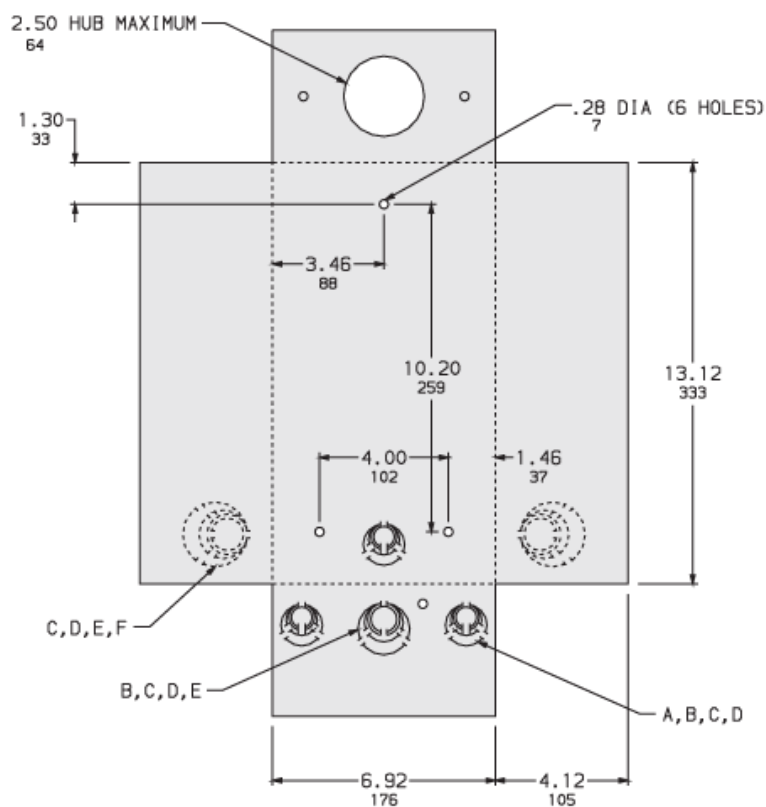
## Offer Sustainability

Sustainable offer status	Green Premium product
California proposition 65	WARNING: This product can expose you to chemicals including: Lead and lead compounds, which is known to the State of California to cause cancer and birth defects or other reproductive harm. For more information go to <a href="http://www.P65Warnings.ca.gov">www.P65Warnings.ca.gov</a>
REACH Regulation	<a href="#">REACH Declaration</a>
REACH free of SVHC	Yes
EU RoHS Directive	Compliant <a href="#">EU RoHS Declaration</a>
Toxic heavy metal free	Yes
Mercury free	Yes
RoHS exemption information	<a href="#">Yes</a>
China RoHS Regulation	<a href="#">China RoHS Declaration</a>
Environmental Disclosure	<a href="#">Product Environmental Profile</a>

## Contractual warranty

Warranty	18 months
----------	-----------

Approximate Dimensions



KNOCKOUTS						
SYMBOL	A	B	C	D	E	F
IN	.50	.75	1.00	1.25	1.50	2.00
MM	13	19	25	32	38	51

in.  
mm

Connections and Wiring Diagrams

QO2100BNRB



QO3100BNRB

