

Features

- Catalyzed conversion varnish provides a durable moisture-resistant finish
- Two doors and one drawer
- Frameless construction with full-overlay doors and drawer
- Three-way adjustable slow-close door hinges for easy cabinet access
- Full-extension 18" (457 mm) depth drawer with soft-close undermount slides for smooth opening
- Solid wood drawer with dovetail joint construction
- Wall-hung design offers a clean, streamlined look
- Customize your storage with optional accessories such as shelves, trays, drawer dividers, and medicine cabinets (sold separately)

Material

- Solid wood and veneers
- Wood is a living material, and its beauty is enhanced by natural variations in grain, color, and pattern. No two pieces of wood are exactly the same, and the color will change with age, temperature, and exposure to light
- The nature of wood grain can cause variations in stain depth. Our expert craftspeople hand-apply the stain to blend these variations

Required Products/Accessories

- K-20000 20-1/2" rectangular undermount bathroom sink
- K-27933 Drawer appliance organizer
- K-28255 Silestone® 61" quartz vanity top with two rectangular cutouts
- K-28265 Silestone® quartz 61" backsplash
- K-33586 Drawer organizer with lid
- K-33587 Divided drawer organizer
- K-33588 Makeup display tray and organizer
- K-5448 Bathroom Vanity Top - Back splash
- K-5451 Bathroom Vanity Top - Side Splash
- K-99565 Metal Vanity Legs
- K-99678-SH6 Shelf w/outlets for 60" KOHLER Tailored® vanities
- K-99679-SH6 Roll-out drawer for 60" KOHLER Tailored® vanities
- K-99681 Electrical outlets for KOHLER Tailored® vanities
- K-99682 General storage package for KOHLER Tailored® vanities
- K-99683 Makeup storage package for KOHLER Tailored® vanities
- K-99684 Drawer divider package for KOHLER Tailored® vanities
- K-99688 3" cabinet pull



Codes/Standards



EPA TSCA Title VI/CARB P2

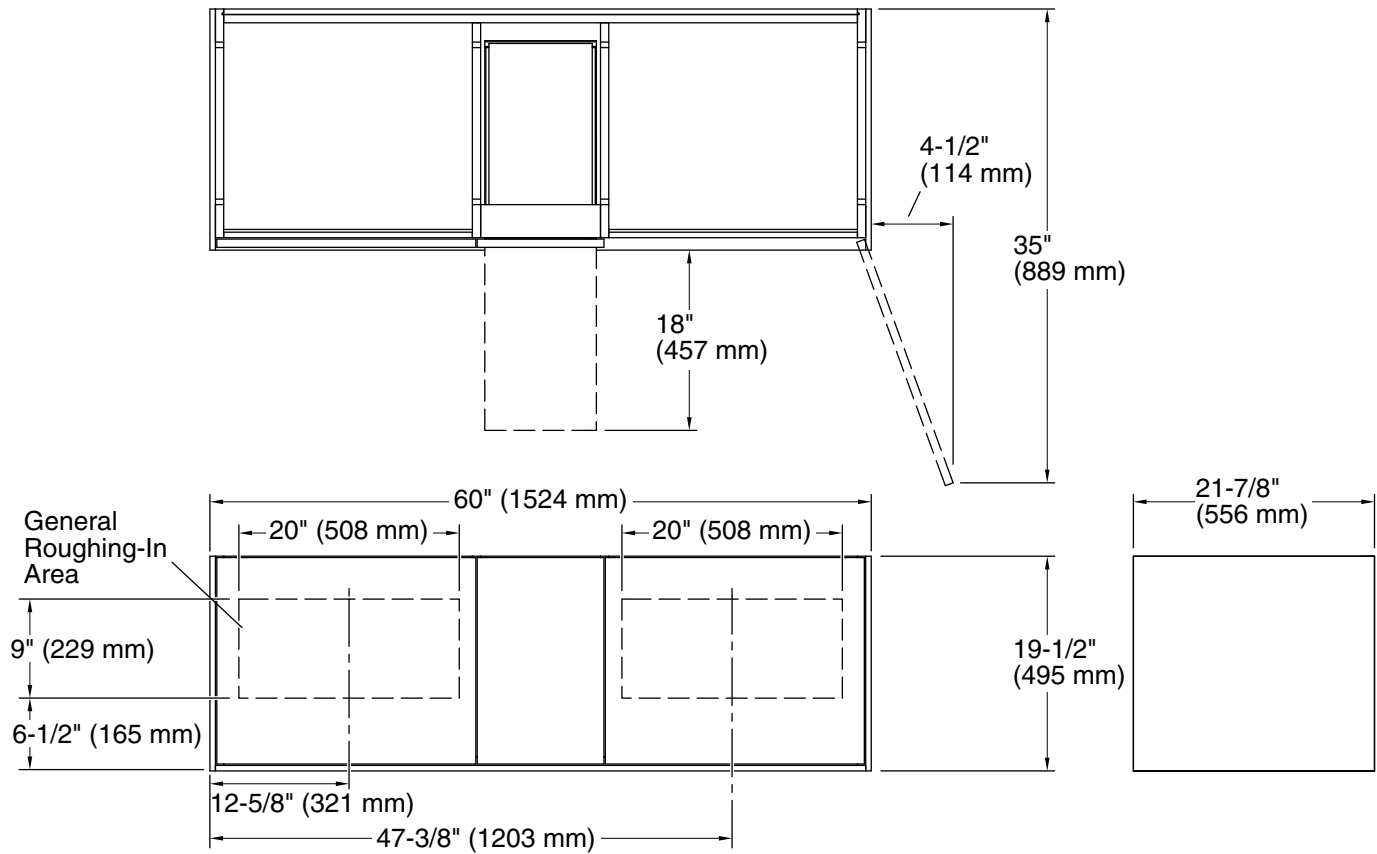
KOHLER® One-Year Limited Warranty

See website for detailed warranty information.

Available Colors/Finishes

Color tiles intended for reference only.

Color	Code	Description
	1WA	Linen White
	1WM	Walnut Flax



Technical Information

All product dimensions are nominal.

Vanity type: Wall-mount