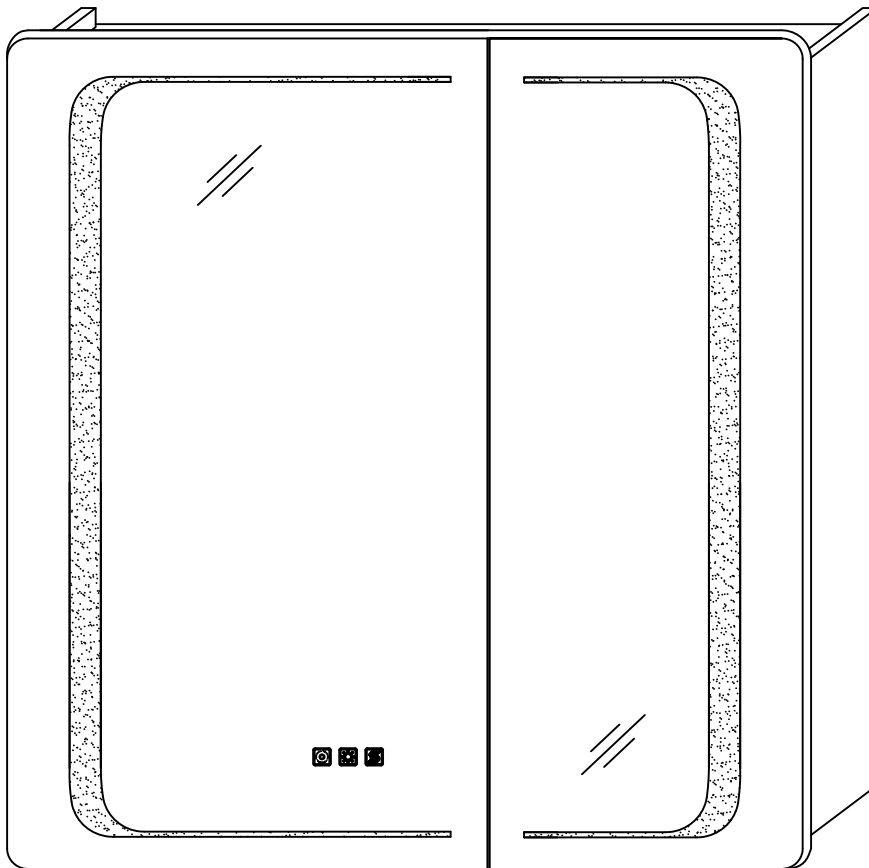


Installation and Operating Manual



W30" x H32"
W36" x H30"

INSTALLATION INSTRUCTIONS



WARNING AND SAFETY INSTRUCTIONS

Before installing your LED Medicine Cabinet fixture, please make sure that you carefully read through this instruction sheet, refer back to them during installation to ensure your product is fitted safely and correctly. Keep these instructions for future use.

WARNING Risk of Fire and Electric Shock

- All fittings must be installed in accordance with current IEE wiring regulations. If in doubt, consult a qualified electrician.
- Switch off the electrical supply at the main circuit board BEFORE installation and maintenance.
- Suitable for indoor use only. This product should be positioned well away from curtains and fabrics. Never cover the mirror.
- Regularly check the cord, the transformer and all other parts for damage, if any part is damaged the product should not be used.

INSTALLATION SAFETY

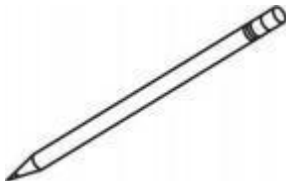

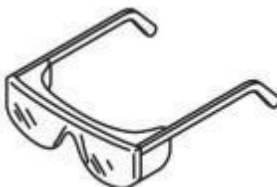



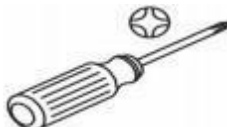
- Inspect the product immediately upon receipt for any possible damage during transportation or missing parts. Handle the product with care and protect against knocks to all sides and edges of the glass.
- Ensure there are no hidden pipes or cables in the wall before drilling.
- Wear suitable eye protection when drilling. Take care if drilling on tiled surfaces in case the drill slips.

CAUTION

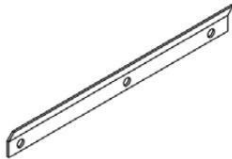
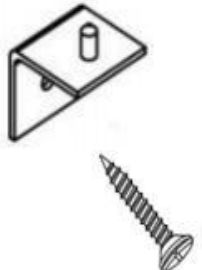







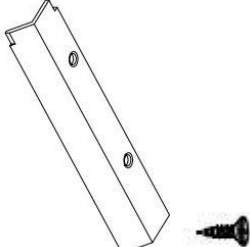
The light source of this product is non-changeable light diodes (LED). Do not disassemble the product, as the light diodes can cause damage to the eyes.

NOTE: The important safeguards and instructions that appear in this manual are not meant to cover all possible conditions and situations that may occur. It must be understood that common sense, caution and care are factors that can't be built into any product. These factors must be supplied by the person(s) caring for and operating the fixture. Do not install this fixture in hazardous locations.

REQUIRTOOLSED

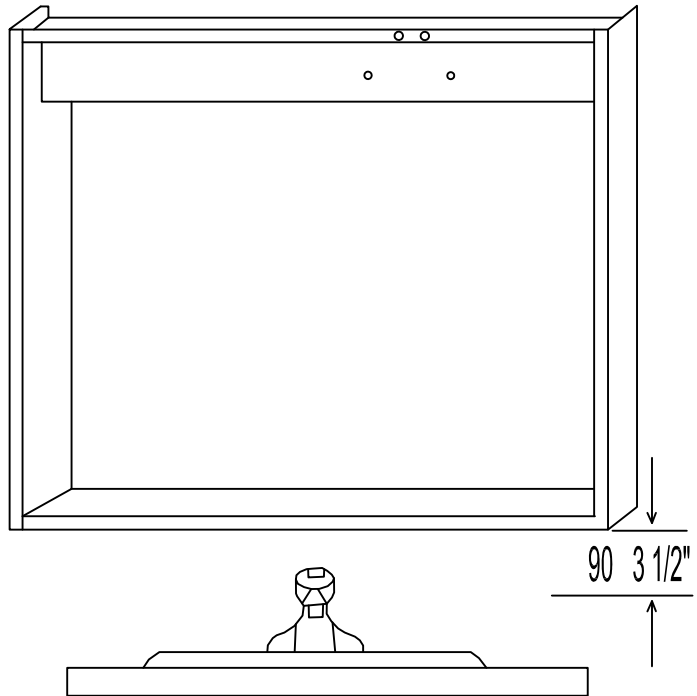
			
			

PARTS SUPPLIED

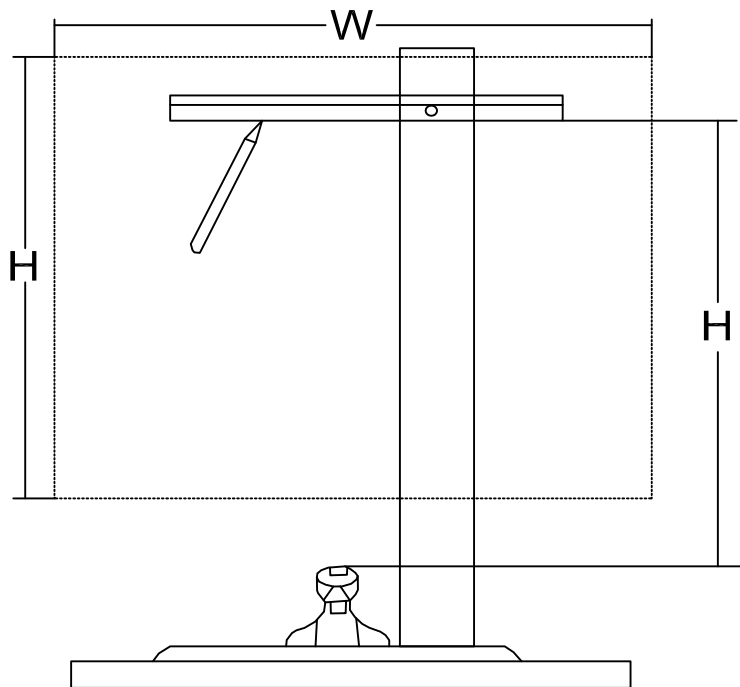
 Z-Bar X1	 Z-Hook x1 Matching screws x2	 Layer board supporting x4-8 for spare	 hinge cover x2-8	 Side panels x 2
 Wire caps x3	 Anchor x 5-9	 Round head screw x5-7	 Glass shelves x2-6	
				 Side panel lids x4 , Matching screws x10

Cabinet installation Instructions for Hanging Walls

Verify minimum clearances



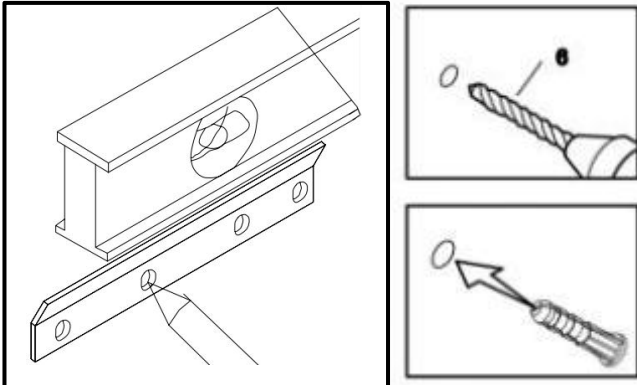
STEP1



STEP2

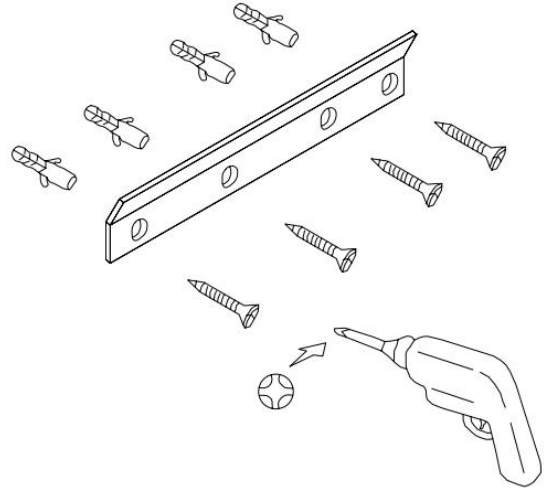
Cabinet installation Instructions for Hanging Walls

Mark hole locations on the wall. Drill holes Insert anchors where needed

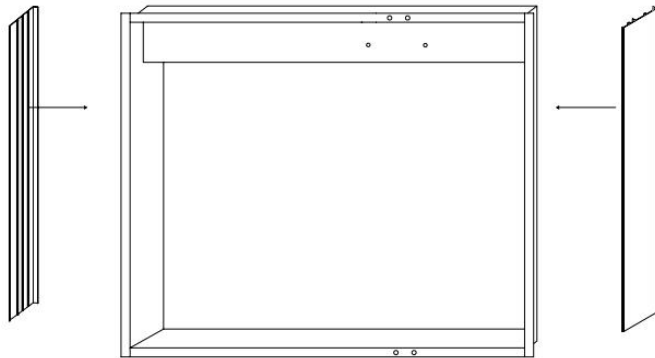


STEP 3

Secure the bar with round-head screws

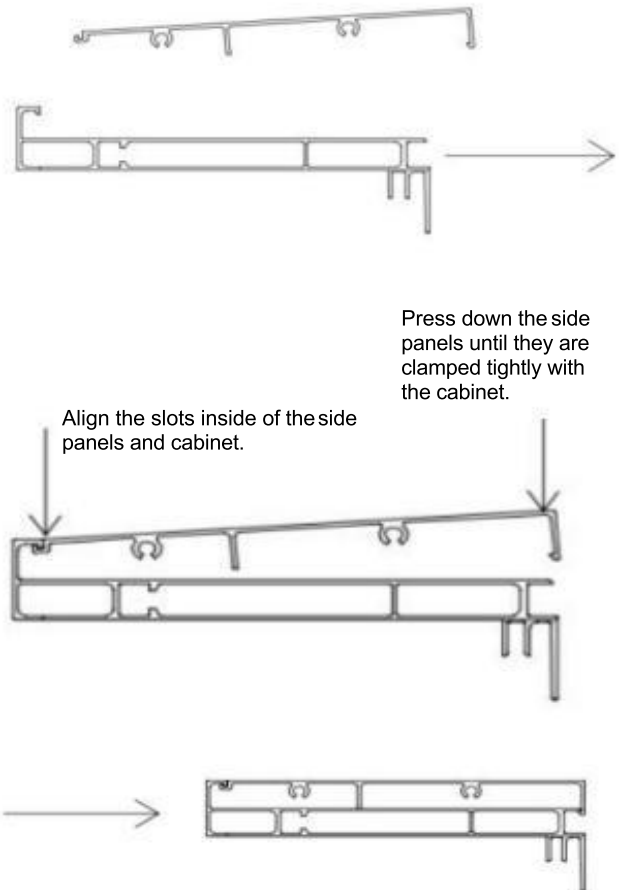


STEP 4



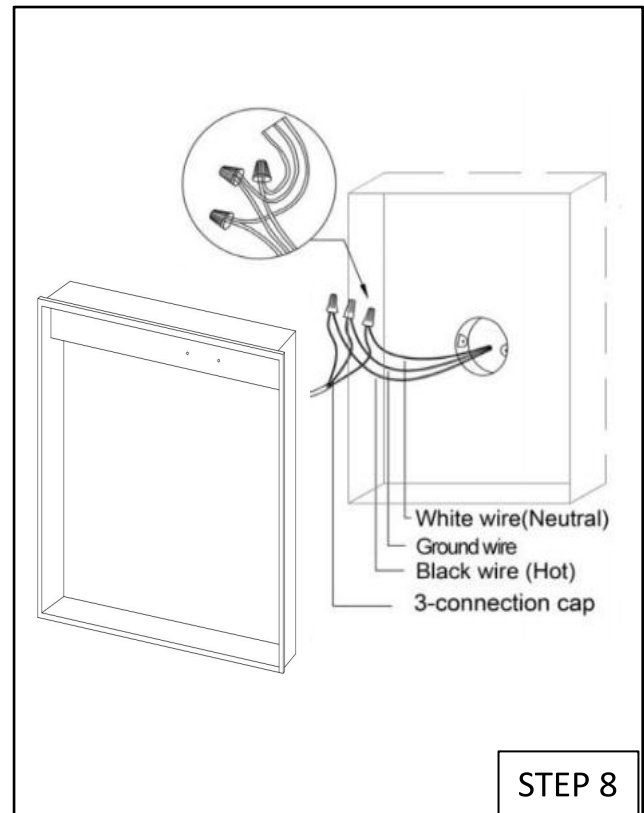
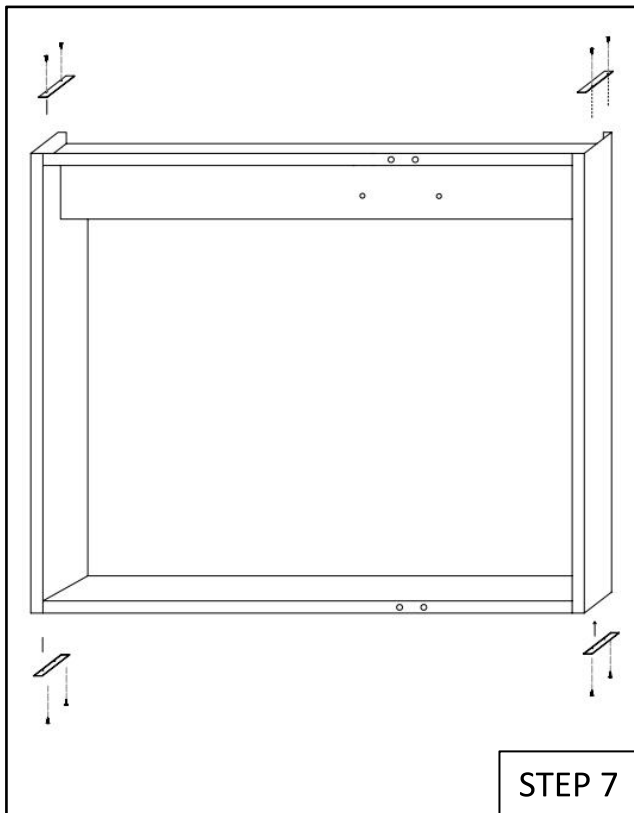
STEP 5

The side panels and cabinets are individually packaged , you need follow the STEP 5 to STEP 7 to install the side panels for hanging walls version,for embedded installation no need install the side boards.

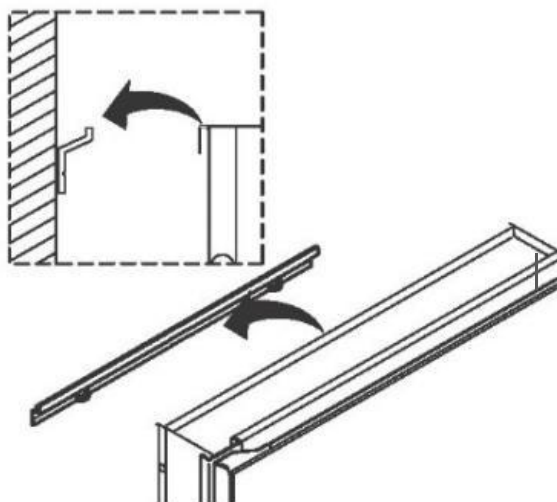


STEP 6

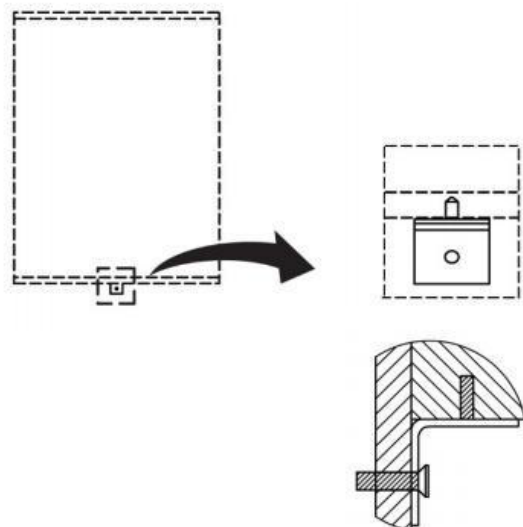
Cabinet installation Instructions for Hanging Walls



Lift the cabinet onto the mounting bar.
Ensure the hooks engage the bar.

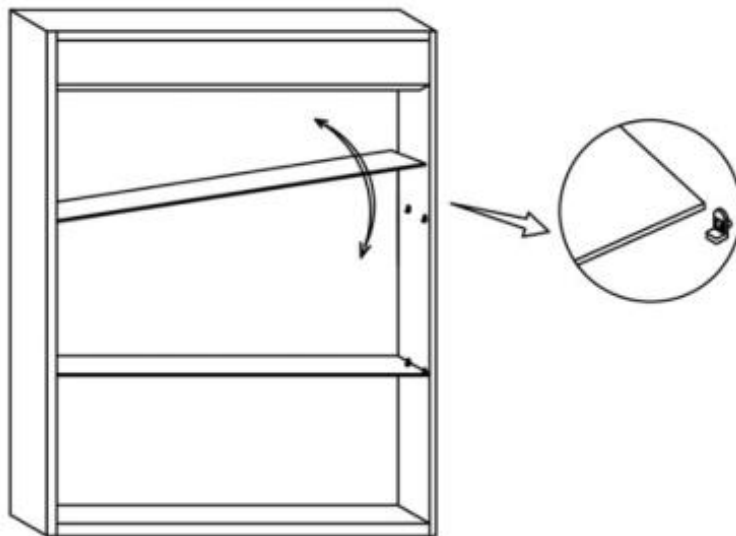


Place the support angle on the bottom of
the cabinet. Mark hole location on wall.
Drill hole. Insert anchor where needed.
Fixed the support angle by screw.



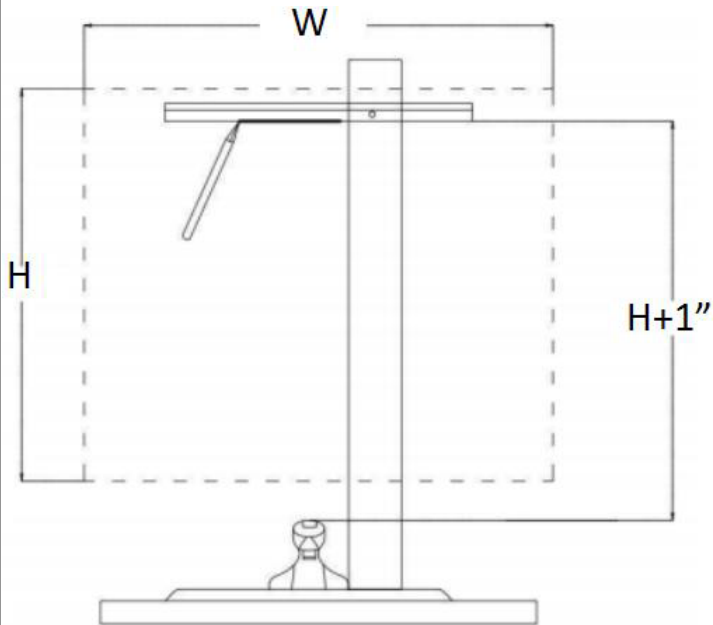
Cabinet installation Instructions for Hanging Walls

Insert the glass shelves between the layer board clips.

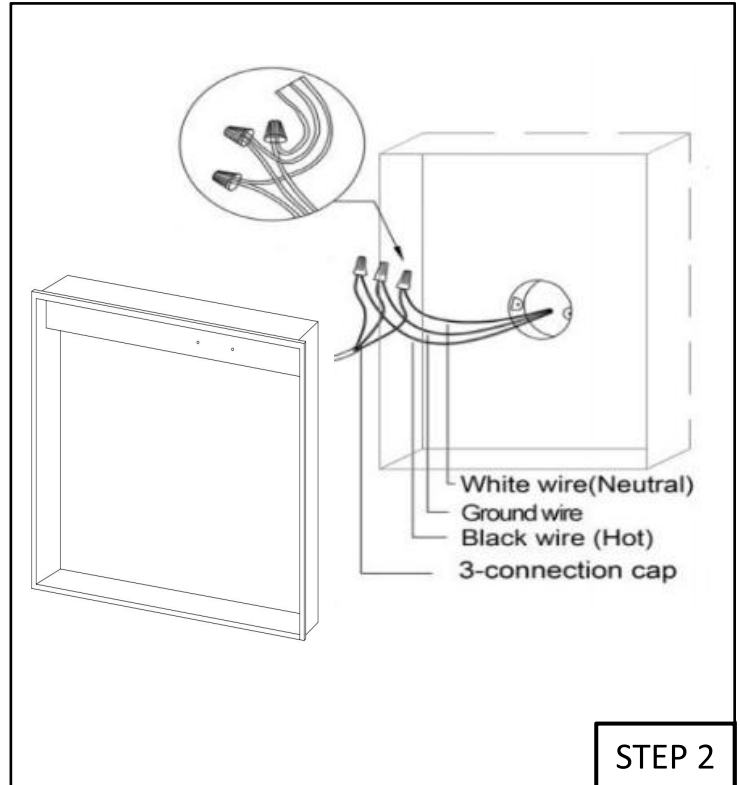


Cabinet embedded Installation Instructions

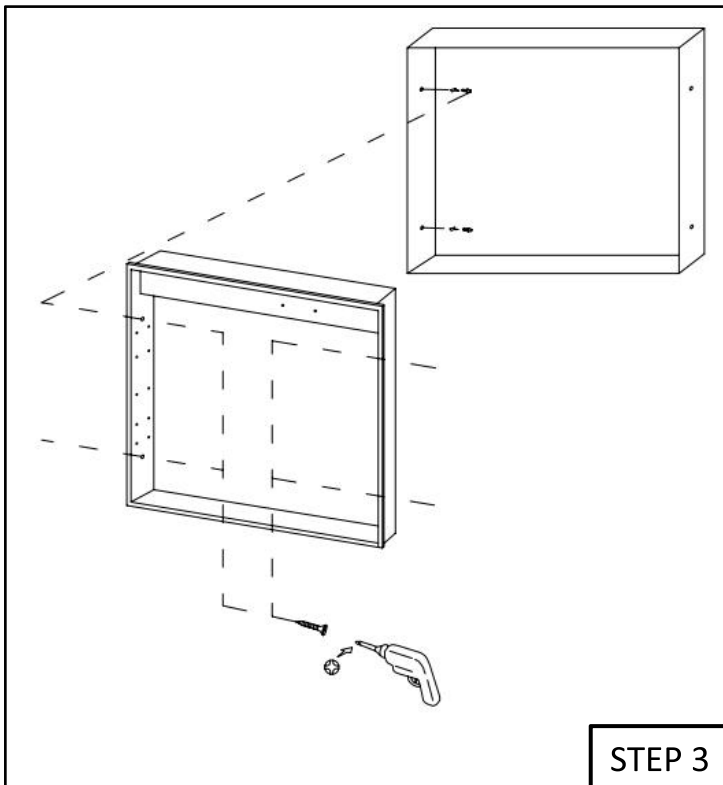
Determine the size of the opening



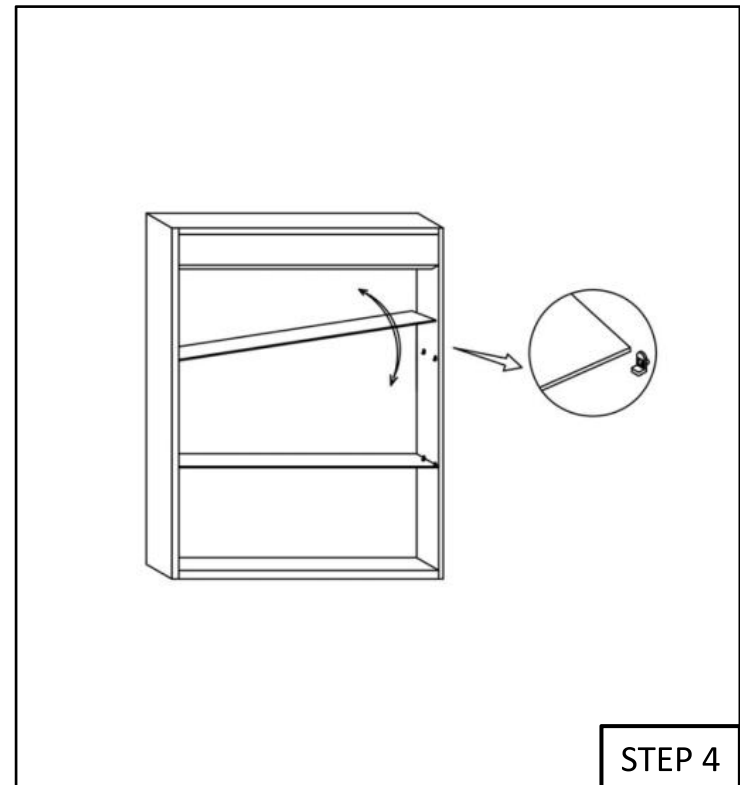
STEP 1



STEP 2



STEP 3



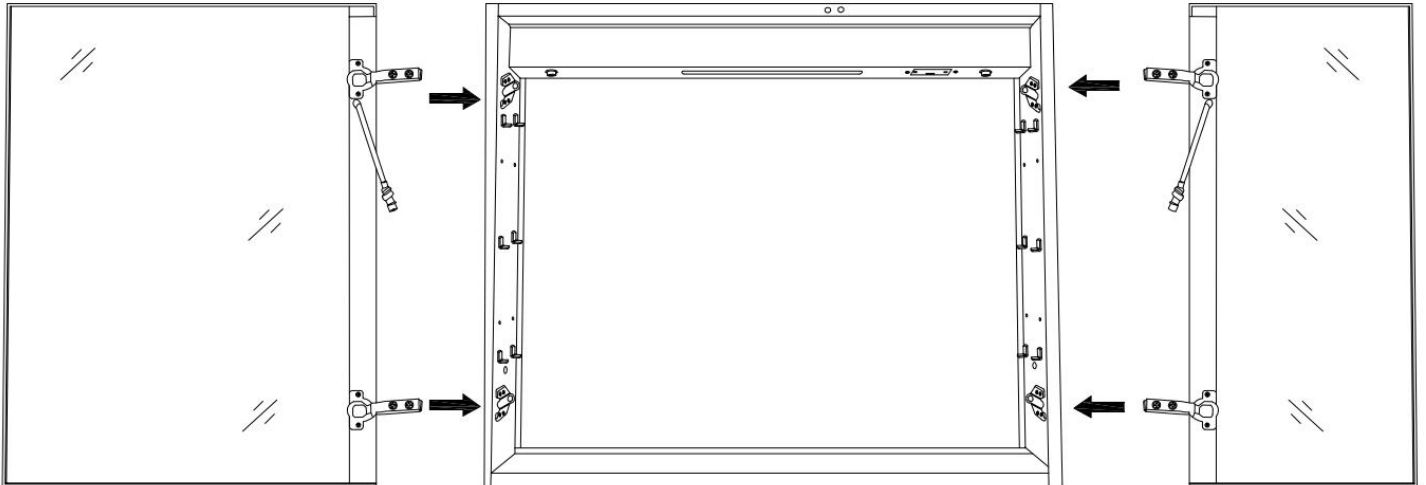
STEP 4

*All diagrams are for reference only. All model dimensions and proportion position will vary.

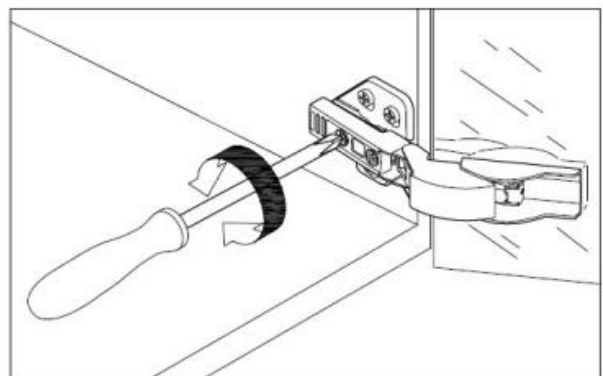
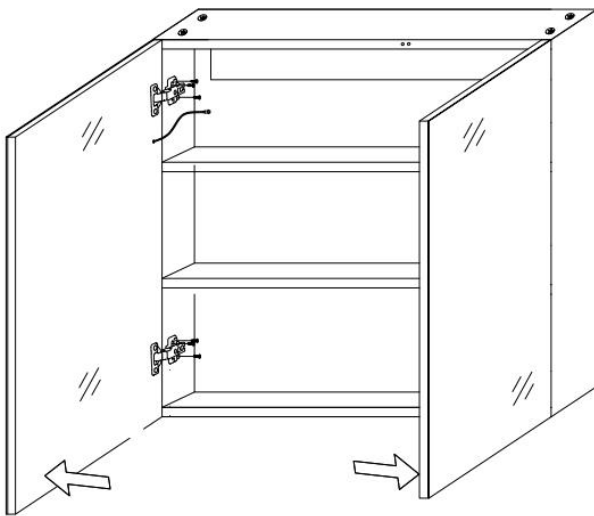
Instructions for assembling the doors and cabinet--

Suit for the items which doors and cabinet are separately packaging (considering the huge weight, we suggest installing the cabinet first, then assemble the door with cabinet as below steps)

1.Insert the hinges to the base ,then connect the doors with the cabinet

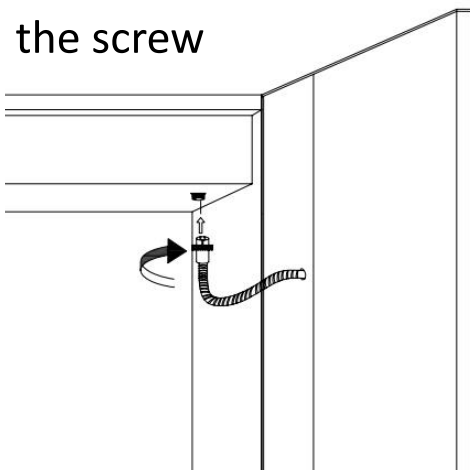


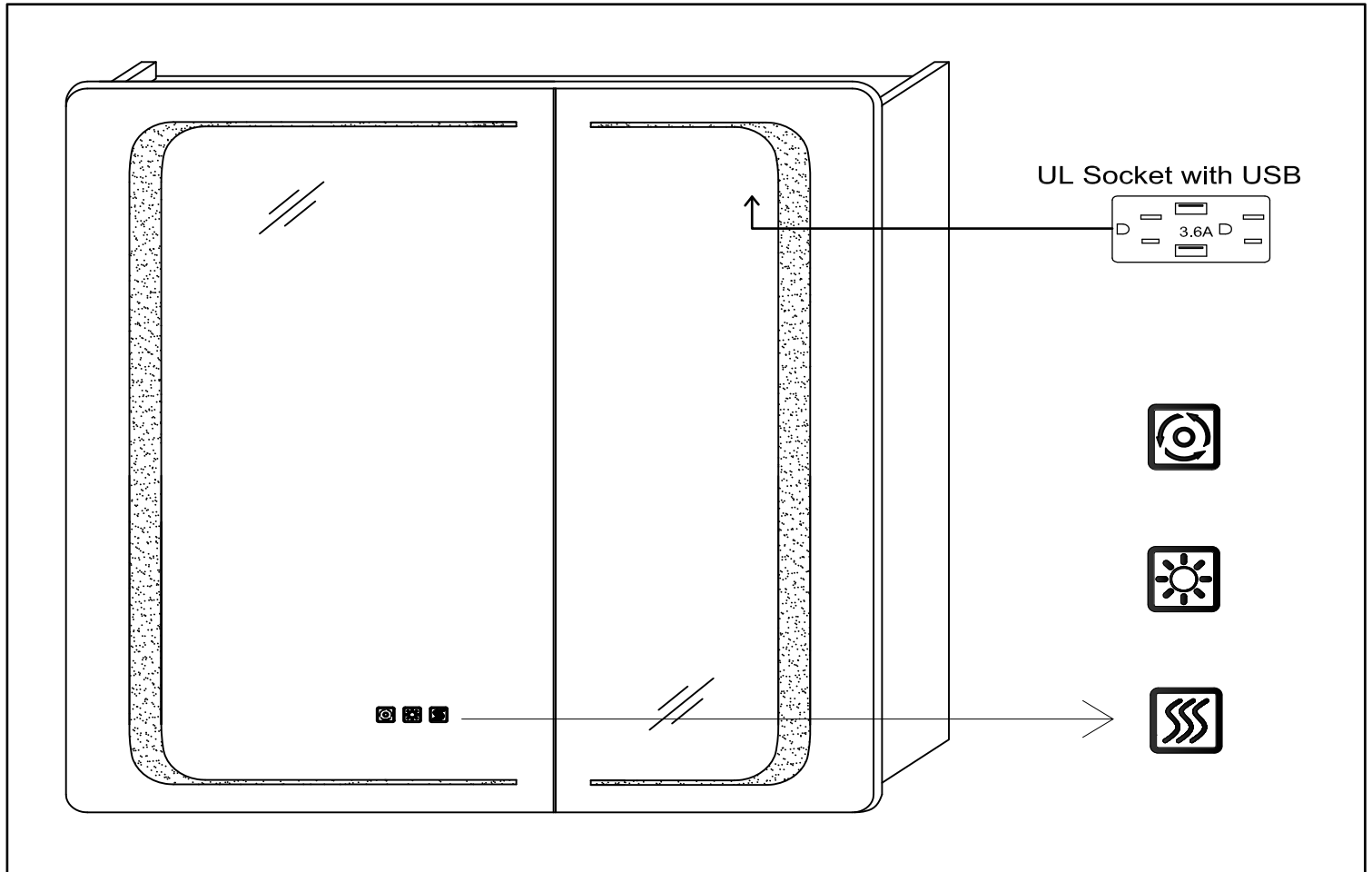
2.Adjust corresponding screws on the hinge to align the doors, ensure that gaps are even and the doors open and close smoothly



Adjust gap between door and cabinet

3.Insert the wire on the door into the terminal on the cabinet and tighten the screw





Manual to turn on/off light,dimming,CCT changing with touch switch



- Short - touch the button to turn on/off the mirror.
- Adjusting color temperatures (CCT) between warm white and cool white by long - touching the button for seconds.
- Finish setting by withdrawing your finger when the color reaches the one you need.
- Optional to be wired to wall switch by ON/OFF memory function.



- Short - touch the button to turn on/off the mirror.
- Long touching the button to adjust the brightness (Dimming).
- Finish setting by withdrawing your finger when the brightness reaches the one you need.



- Mirror begins to be warm and defog after pressing the defogger button.
- Press again to quit the anti - fog function.
- Long press button to turn on/off the blue backlight
- Note: The defogger will stop automatically after 60 minutes of continuous operation to prevent any damage caused by prolonged high temperature.

Sensor Light

- Inside Sensor Light

- The Sensor Light inside the cabinet will be Auto-on/off according to opening and closing of the cabinet door.
- Don't cover the light sensor

