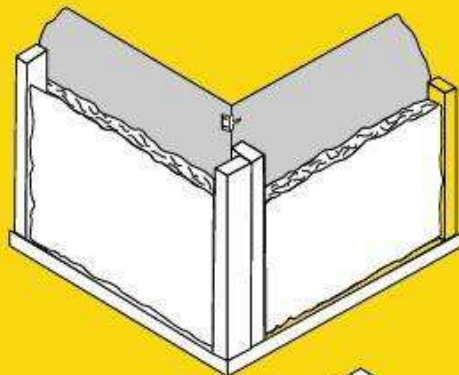
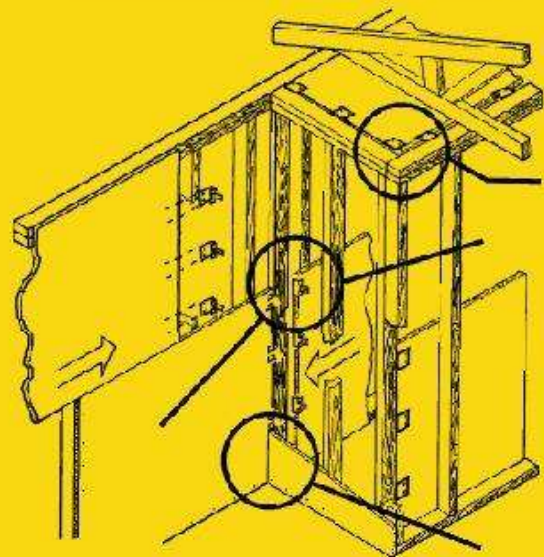
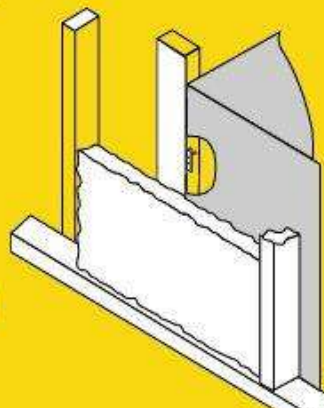


Reduces Truss Uplift
i.e. Ceiling Partition Separation
and also eliminates dead wood.



**2 Stud
Corners**



**Single Stud
Partition**

MATERIAL

A. Ceiling Back-Up 155 ft. @ \$.30/ft.	\$ 46.50
B. Partition intersections (30) 30 X 2 studs = 60 studs @ 2.50 ea.	150.00
C. Outside Corners (10) 10 studs X \$2.50/ea.	25.00
D. Nails - 750 16d @ \$.006/ea.	4.50

TOTAL MATERIAL SAVED \$226.00

LABOR

A. Ceiling Back-Up 155 ft. divided by 8' = 20 studs 20 studs X 4 man min./stud	80 min
B. Partition intersections (30) 60 studs X 8 man min./stud	480 min
C. Outside Corners (10) 10 studs X 8 man min./stud	80 min.
TOTAL LABOR SAVED (640 min. divided by 60 min.)	10.67 hrs.

Net Savings = \$439.40

* Construction cost savings are based on a floorplan of a typical 1,200 square foot home using 4 X 8 sheets.

5546 sq. ft. of drywall @ \$.01/sq. ft.	
to supply and install the corner-backs	\$ 55.46
NET MATERIAL SAVINGS	\$170.54
NET LABOR HRS SAVED @ \$20.00/HR.	\$213.40