



**VEVOR®**

## WORKBENCH BRACKET KIT

8 PCS  
4MM Steel  
Hardware Kit Included



### Workbench Corner Bracket Kit

The workbench corner brackets are rustproof, wear-resistant, and rock-solid with powder paint. The steel table brackets help you build your heavy-duty shop table. A hardware kit is included: a wrench, 35 sets of fixed bolts (12 cm), 35 sets of fixed bolts (6 cm), and 70 nuts.

- 5mm Sturdy Steel
- For 4 x 4 & 2 x 4 Lumber
- Competitive Details
- Easy To Assemble
- Versatile Uses

**VEVOR®**

### Tough Equipment & Tools, Pay Less

VEVOR is a leading brand that specializes in equipment and tools. Along with thousands of motivated employees, VEVOR is dedicated to providing our customers with tough equipment & tools at incredibly low prices. Today, VEVOR has occupied markets of more than 200 countries with 10 million plus global members.

### Why Choose VEVOR?

- Premium Tough Quality
- Incredibly Low Prices
- Fast & Secure Delivery
- 30-Day Free Returns
- 24/7 Attentive Service



### 4MM PREMIUM STEEL



- Not Easily Deform
- Strengthen Workbench Table

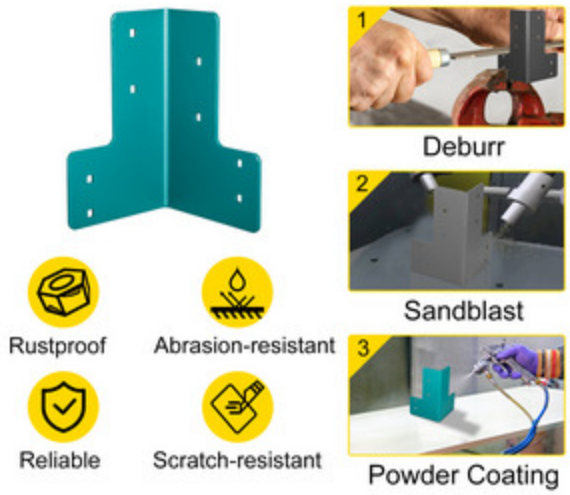


### FITS 4 X 4 & 2 X 4 LUMBER

### Fits 4 x 4 & 2 x 4 Lumber

The shop table brackets fit for 4x4" and 2 X 4" lumber. The pre-drilled holes deviate from each other for the avoidance of collision between bolts.

### HI-TEMP COATING & NO BURRS



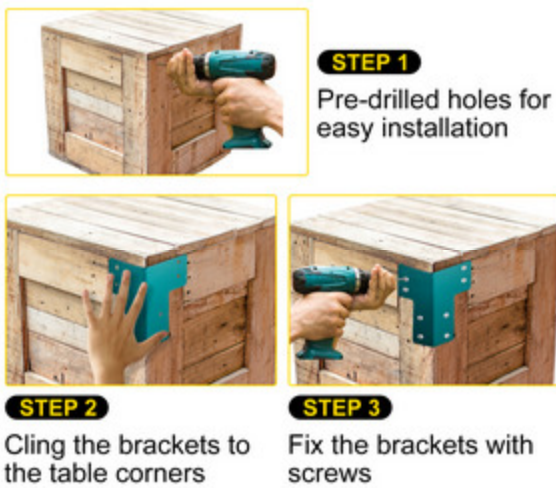
### Hi-Temp Coating & No Burrs

The brackets are through 3 processes: holes-drilling, deburring, sandblasting, and hi-temp powder coating, so they are all sleek, rustproof, scratch-resistant.

### 4mm Premium Steel

The 8 PCs corner brackets adopt 4mm thick premium steel, heavy-duty, and not easily deformed. They can effectively strengthen your table and ensures a long service time.

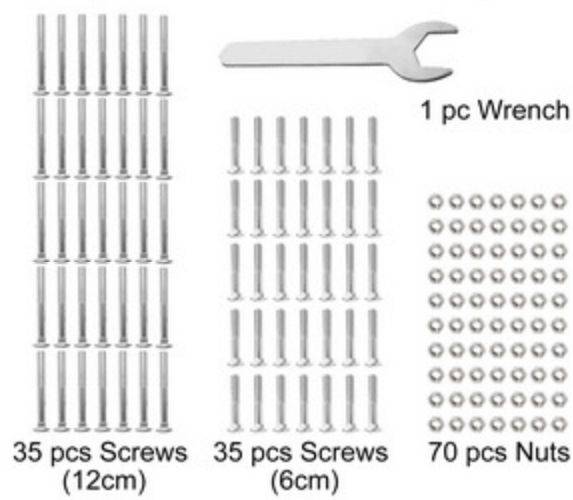
### EASY INSTALLATION



### Easy Installation

There are pre-drilled holes and a hardware kit for easy installation. You need to cling the brackets to the table corners and fix them with screws.

### ACCESSORIES INCLUDED



### Accessories Included

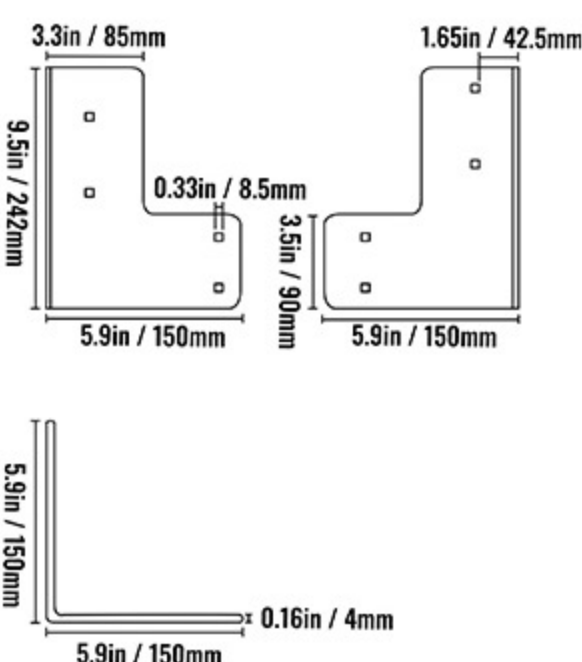
Don't worry about the installation. A hardware kit, including 35 pcs bolts (12 cm), 35 bolts (6 cm), 70 nuts, and a wrench, can help you fasten the brackets firmly and quickly.

### WIDE APPLICATION



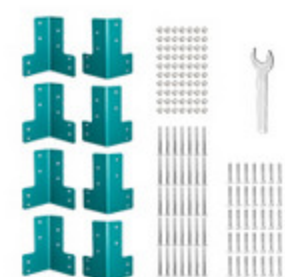
### Wide Application

The brackets can be used in many fields, such as workbenches, boxes, patio table, aquarium stand or barbecue tables, etc.



### Specifications

- Model: LJDZ-6714
- Material: Steel
- Color: Green
- Steel Thickness: 0.16"/4 mm
- Product Size: 7 x 7 x 10"/178 x 178 x 254 mm
- Fixation Holes Diameter: 0.43"/11mm
- Each Bracket Weight: 4.41lbs/2kg



### Package Content

- 8 x Workbench Corner Bracket
- 1 x Wrench
- 35 x 12 cm Bolts
- 35 x 6 cm Bolts
- 70 x Nuts