



CAUTION: ASBESTOS IN EXISTING FLOOR: Lifeproof product does not contain asbestos. Existing installed resilient flooring and asphaltic adhesive may contain asbestos fillers or crystalline silica. Do not sand, dry sweep, dry scrape, drill, saw, bead-blast, or mechanically chip or pulverize existing resilient flooring, backing, lining felt, asphaltic "cutback" adhesive or other adhesives. See "Recommended Work Practices for Removal of Resilient Floor Coverings" (rfci.com) for detailed information and instructions on removing all resilient covering structures.



WARNING: This product can expose you to formaldehyde gas which is known to the State of California to cause cancer. For more information, go to www.P65Warnings.ca.gov.



WARNING: Drilling, sawing, sanding or machining wood products can expose you to wood dust, a substance known to the State of California to cause cancer. Avoid inhaling wood dust or use a dust mask or other safeguards for personal protection. For more information go to www.P65Warnings.ca.gov/wood.



MINNESOTA STATUTE: "IMPORTANT HEALTH NOTICE. SOME OF THE BUILDING MATERIALS USED IN THIS HOME (OR THESE BUILDING MATERIALS) EMIT FORMALDEHYDE. EYE, NOSE, AND THROAT IRRITATION, HEADACHE, NAUSEA AND A VARIETY OF ASTHMA-LIKE SYMPTOMS, INCLUDING SHORTNESS OF BREATH, HAVE BEEN REPORTED AS A RESULT OF FORMALDEHYDE EXPOSURE. ELDERLY PERSONS AND YOUNG CHILDREN, AS WELL AS ANYONE WITH A HISTORY OF ASTHMA, ALLERGIES, OR LUNG PROBLEMS, MAY BE AT GREATER RISK. RESEARCH IS CONTINUING ON THE POSSIBLE LONG-TERM EFFECTS OF EXPOSURE TO FORMALDEHYDE. REDUCED VENTILATION MAY ALLOW FORMALDEHYDE AND OTHER CONTAMINANTS TO ACCUMULATE IN THE INDOOR AIR. HIGH INDOOR TEMPERATURES AND HUMIDITY RAISE FORMALDEHYDE LEVELS. WHEN A HOME IS TO BE LOCATED IN AREAS SUBJECT TO EXTREME SUMMER TEMPERATURES, AN AIR-CONDITIONING SYSTEM CAN BE USED TO CONTROL INDOOR TEMPERATURE LEVELS. OTHER MEANS OF CONTROLLED MECHANICAL VENTILATION CAN BE USED TO REDUCE LEVELS OF FORMALDEHYDE AND OTHER INDOOR AIR CONTAMINANTS. IF YOU HAVE ANY QUESTIONS REGARDING THE HEALTH EFFECTS OF FORMALDEHYDE, CONSULT YOUR DOCTOR OR LOCAL HEALTH DEPARTMENT."

Safety and Health Precautions

Power tools can be dangerous. Operate in strict accordance to manufacturer's operating instructions and safety precautions. Unsafe and improper use can cause serious injuries. Avoid inhalation and exposures to dust by mechanical means and by wearing personal protective equipment. Wear appropriate personal protective equipment (PPE) which includes NIOSH or OSHA-approved dust masks, safety goggles and work gloves.

Warranty

This flooring product comes with Limited Lifetime Residential and 5 years Light Commercial warranties. For the warranty to be effective, the flooring must be installed and maintained according to manufacturer's installation instructions and maintenance guide. The warranty applies to the original purchaser of the flooring for the duration of the stated warranty from date of purchase. It guarantees the original purchaser that (1) the finish surface will not wear through from normal foot traffic, and (2) the floor will resist damage due to moisture from general cleaning and water spills when removed within 24 hours. The warranty excludes damages resulting from outside the normal conditions including but not limited to: Scratches and dents from sharp objects, shoes with spikes and cleats, environmental conditions including excessive humidity or extreme temperatures, mold/ mildew, appliance leaks, natural disasters, Acts of God and damages which are generally covered by casualty insurance. For more detailed warranty terms, coverage and exclusions, please visit homedepot.com/homedecorators

Owner/Installer Responsibility

Quality Check

Perform Quality Check. You are allowed to open up to 4 boxes prior to installation for the purpose to carefully examine the color, finish and quality of each plank. DO NOT open more than 4 boxes. If you are dissatisfied with the material, you should contact the retailer prior to installation. Installation of the floor indicates the owner's acceptance of the Quality of the product.

Customer Support

To assure the warranty is not inadvertently voided, before proceeding with any activity that is not covered in this manual, please contact our Customer Support Team.

877-630-1800

The owner is advised to be at home during the installation for consultation/direction. The owner and installer should discuss installation and layout to maximize satisfaction. If this is not possible, consultation should be done prior to installation. Installers should be familiar with installation guidelines from National Wood Flooring Association (woodfloors.org). The owner/installer assumes all responsibility for product quality of completed installation.

Purchase flooring to be installed in one large area at the same time. Product purchased at a later time than the first purchase may vary beyond your expectations. Accessories, trims and moldings are manufactured to coordinate with the varied appearances of the floor planks. Any exact matches are coincidental. Non-matching accessories are not defective products.

This product is manufactured according to strict quality standards. In the event that defects are discovered in the field, the industry standards permit a defect tolerance not to exceed 5%. Order an additional 5% extra for cutting wastage and grading allowances (10% for diagonal installations).

During installation, inspect the planks continuously. Defects that can be seen from a standing position should be cut off or set aside. Installing defective plank implies acceptance of the product quality.

Clicking and squeaking noises are the result of interactions among flooring, joists and subfloor movements. When noises are detected during installation, discontinue installation and remove the causes.

Wood floors are natural products containing natural variations. Variations in color, tone, grain, mineral streaks, small knots and other characters are found from plank to plank. Similar variations exist between samples, pictures and purchased flooring. They are normal and it does not mean the product is defective.

Subfloor Requirements

CONCRETE SUBFLOORS

PHYSICAL CONDITIONS

- Have minimum rated strength of 3000 psi.
- Be level to within 1/4 in. in a 10 ft. span; slope 1 in. in 6 ft.; no bumps or low spots. High spots can be removed by grinding; depressions can be filled with patching compound formulated for use in floor installation.
- Be clean; no construction debris, soil, mud and any other objects on or adhering to the floor; if necessary, scrape and sweep away before the installation; no protrusions of nails, debris, metals should remain.
- New concrete slab must cure for at least 60 days. It must have a minimum 10 mil polyethylene sheet between the ground and the concrete.


- Be free from moisture related conditions which can damage the installed flooring.

CONCRETE MOISTURE

Test all concrete subfloors for moisture content and document the results. Visual checks are not reliable.

Perform tests at locations around exterior doorways, near walls containing plumbing, near foundation walls and in the center of the room. Minimum sample size is 3 samples per 1000 sq. ft. of area and one test for every additional 1000 sq. ft. thereafter. Moisture content should meet one of the following criteria:

- 5% when tested using Tramex Concrete Moisture Encounter.
- Less than 3 pounds per 1000 sq. ft. per 24 hours when using Calcium

	Installation Instructions For Assistance, Call: 1-877-630-1800 For latest revision, visit Homedepot.com/homedecorators	Product Description Engineered Hardwood Water Resistant Click lock/Click lock (Long side/Short side)	Grade Levels Above Grade On Grade Below Grade	Installation Method Floating Indoors Only	Warranty Lifetime Residential 5 Yrs. Light Commercial
---	---	---	---	--	---

Chloride test (ASTMF1869).

- 85% when using Relative Humidity Testing (ASTMF-2170).



Note: Concrete moisture content may be acceptable the time of the test. These tests do not guarantee a perpetual “dry” concrete slab. The concrete slab moisture content can vary at other times of the year. We are not responsible for moisture related damage to installed flooring.

WOOD SUBFLOOR

PHYSICAL CONDITIONS

The subfloor must be clean; no presence of construction debris, soil, mud and any other objects on or adhering to the floor; no protrusions of nails, debris, or metals should remain. If necessary, scrape and sweep the subfloor before the installation.

The subfloor must be structurally sound and stable; no movements or squeaks; no loose panels or loose nails; no signs of ply de-lamination or other damages. Repair all shortcomings before installation.

The subfloor must be flat; no visible bumps or low spots; the subfloor should be flat to within 1/4 in. in 10 ft. span; slope 1 in. in 6 ft. Test for moisture using a reliable moisture meter. Perform tests at locations around exterior doorways, near foundation walls, near walls containing plumbing lines and in the center of

Jobsite Conditions

GENERAL

Prior to installation, the installer must ensure that at the time of installation, the job site conditions including subfloor/substrate, ambient temperature and relative humidity, and all impacting variables will not negatively affect the floor. The manufacturer will decline responsibility for damages associated with improper installation or poor site conditions.

STORAGE CONDITIONS

Do not store flooring in uncontrolled environmental conditions. For example, garages and exterior patios are not acceptable areas to store flooring. Handle and unload flooring with care and store within the environmentally controlled site in which it is expected to perform.

Flooring stored on a concrete slab should be elevated at least 4 in. to allow air circulation under cartons. Do not allow boxes to bend, support as necessary. Stack box one on top of another.

EXISTING HOME CONDITIONS

Prior to and during installation, an existing home should have a consistent room temperature of 60°F-80°F and relative humidity (RH) of 35%-55%.

NEW CONSTRUCTION OR REMODEL CONDITIONS

All work involving water, such as pouring basement concrete floors, drywall and plasterwork, plumbing, etc. must be completed well in advance of the floor delivery. Ensure that the building is enclosed. Where building codes allow, permanent heating and/or air conditioning systems should be operating at least five days preceding installation and should be maintained during and after installation. If it is not possible for the permanent heating and/or air conditioning system to be operating before, during and after installation, a temporary heating and/or dehumidification system that simulates normal living (occupied) conditions can enable the installation to proceed until the permanent heating and/or

Preparation

TOOLS AND MATERIALS

Tape measure • Moisture meter (wood, concrete or both) • Chalk line & chalk • Non metal head hammer • Electric power saw • Carbide tipped saw blade for fine cut • NIOSH-designated dust mask • Hand saw or jamb saw • Eye protection • Straight edge Spacers • Pry Bar • Mallet • Broom • Color matched wood putty • Tapping block • Pull bar • Painters tape • 100% silicon caulk.

THINGS TO CONSIDER

- Make sure your work area is well lit. Good visibility ensures that color is consistent and that visually defective planks are detected and removed.
- Remove existing base, shoe molding or threshold carefully. They can be used to cover the 1/4 in. expansion gap left around the edge of the room.
- Prior to installation, arrange planks from several boxes to ensure even distribution of colors, shades and characteristics in the installed flooring.
- Accessories, trims and moldings are manufactured to coordinate with the varied appearances of the floor planks. Any exact matches are coincidental. Non-matching accessories are not defective products.

the room. Measure 20 locations per 1000 sq. ft. Moisture content of the subfloor should be less than 12%.

PLYWOOD OR ORIENTED STRAND BOARD (OSB) REQUIREMENTS

On truss/joist spacing of 16 in. (406 mm) O/C or less, the industry standard for single-panel subflooring is a minimum 5/8 in. (19/32 in., 15.1 mm) CD Exposure 1 plywood subfloor panels (CD Exposure 1) or 23/32 in. OSB Exposure 1 sub-floor panels, 4 ft. x 8 ft. sheets. Expansion gap between panels should be 1/8 in. (3 mm). If panels are not tongued and grooved and there is not sufficient spacing or is inadequate, cut in the required spacing with a circular saw. Do not cut in expansion space on tongue and groove panels.

PARTICLE BOARD OF FIBER BOARD

Allowed only for floating installation.

EXISTING FLOORS

Installation over existing floors requires the installer to ensure the existing floor meets the above subfloor requirements for either concrete or wood above.

Acceptable floor coverings include: solid hardwood, linoleum, terrazzo, ceramic tile and other “hard surface flooring.”

Unacceptable floor coverings include: carpet, needle punch felt, edge glued linoleum and other “soft and compressable flooring.”

air conditioning system is fully operational. Your job site should have a consistent temperature of 60°F-80°F and relative humidity (RH) of 35%-55%.

BASEMENT CONDITIONS

Whether floor is concrete slab or or bare ground, it must be dry. Ensure there is open vents year-round for proper air circulation and prevent moisture build up.

CRAWL SPACES CONDITIONS

Bare ground in the crawl spaces must be completely covered using 6 mil black polyethylene. Crawl space clearance between the earth and underside of joists should be no less than 18 in. and the perimeter of the vent area should be equal to 1.5% of the total square footage of the crawl space or as mandated by code.

RADIANT HEATED SUBFLOOR

This product can be installed over radiant heated subfloor with embedded heating elements. Heating system elements must be separated from the flooring by at least 1/2 in. distance. Heating system should be set at 70°F and run for 48 hours prior to and during the entire installation. The heating system should be run 48 hours after installation. Then it can be gradually increased over the course of 24 hours, until normal operating temperature is reached. Floor temperature should not exceed 85°F. Do not make abrupt changes in radiant heating temperatures.

MOISTURE BARRIER (concrete slab only)

it is recommended to use a moisture barrier to prevent moisture migration. A plastic film with a minimum thickness of 6 mil should be placed with a 4 –6 in. (101.6 –152 mm) overlapped seam, and taped with a suitable tape.

SOUND CONTROL UNDERLAYMENT

Sound control underlayment is recommended.

- If an underlayment is used, install it according to underlayment manufacturer instruction.
- The remainder of the last plank can be used as a starter board on the following rows. If possible, keep the minimum length of the first and last plank needs to be longer then the width of the material being installed.
- Using a shorter piece at undercut door jams will help when fitting flooring in place.
- Never hit the flooring directly with the tapping block and be careful not to fracture floor tongue and groove.
- During installation, inspect the planks continuously. Defects that can be seen from a standing position should be cut off or held out. Installing defective planks implies acceptance.
- Squeaking and clicking noises are the result of interactions among flooring, joists and subfloors when they move. Limiting the movements of the flooring system usually eliminates most of these noises. Sometimes, it is impossible to eliminate them completely and minor squeaking or clicking

noises are to be accepted as normal flooring phenomenon.

- Minor scratches can generally be repaired with the use of putty, stain or filler. It is an industry standard practice of flooring installation and it should be accepted as normal by the home owner.

EXPANSION GAP

Required gap width range is 3/8 in. It is required around the perimeter of the floor and between floor and all vertical obstructions. Do not place permanently mounted structures such as kitchen counter/cabinet on the installed floor.

TRANSITION MOLDING

Maximum continuous installation without transition molding is 40 lineal feet. Recommended at doorways or passageways 5 ft. wide or less.



Note: Floor areas interrupted by wall openings greater than 5 ft. wide, or interrupted by wall sections extending out of the wall, or floor areas which are not rectangular may experience buckling or gapping if there is excessive floor expansion or shrinkage.

ACCLIMATION

Minimum acclimation time is 48 hours. In open box, open plastic wrap. Elevate cartons from the floor by placing them on 2"X 2" lumber or equivalence. Place spacers (3/4" to 1" sticks) between each layer or cross stack the layers for maximum exposure to ambient conditions. Acclimation temperature range is 60°F-80°F and relative humidity (RH) of 35%-55%. Conditions in which the floor was acclimated should be maintained continuously thereafter.

Installation Procedures

DISASSEMBLING PLANKS

If you have to disassemble the planks or tiles during the installation, follow this procedure.

DISENGAGE THE LOCK

Carefully lift up the last row to disengage the lock. Depending on the size, more than one person may be required to accomplish this task (Fig.1).

SEPARATE THE ROW.

Separate the last row row by carefully pulling the row away from the row before it (Fig.2).

Disassemble the farthest plank by angling the short side up vertically and remove it (Fig. 2).

FLOOR INSTALLATION

FIRST ROW, FIRST PLANK

Place a spacer of required thickness to the left and in front of the panel, position the panel against the wall. As an option, you can place the spacers after you have completed 3 rows, you can easily position the flooring against the front wall and place the spacers between the wall and the planks (Fig.1)

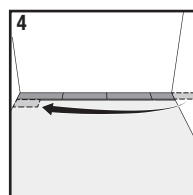
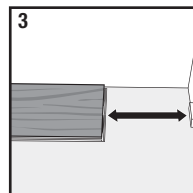
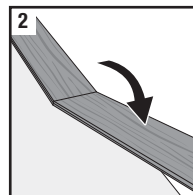
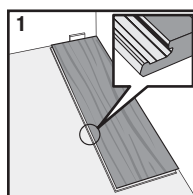
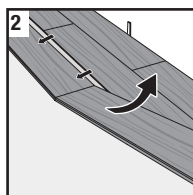
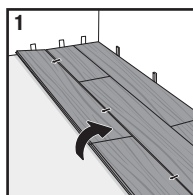
FIRST ROW, SECOND PLANK AND THE REST

Press the short end of the next plank at an angle to the first one, and then fold down (Fig.2)
Complete the first row in the same way.

At the end of the first row, put a spacer to the wall and measure the length of the last panel to fit (Fig.3)
Cut a full plank to size and install.
Save the remaining plank from the last cut as starting plank of the second row if it is more that 6 inches long. (Fig.4)

SECOND ROW, FIRST PLANK

First plank (min. length > 6 in.) Place the plank remain from first row here as shown in Fig 4. Put a spacer against the left wall.



Ensure the staggered joint distance i.e., minimum distance between short ends of panels in parallel rows shall be 6 inches or more (Fig 5).

Place the first plank and angle against the plank in the previous row, press forward and fold down at the same time.

Leave the plank in a somewhat up angled position when the planks start to lock (Fig.6). To make this further easier, a wedge with the suitable angle can be placed under the plank near the short side joint as support.

SECOND ROW, SECOND PLANK AND THE REST

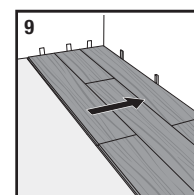
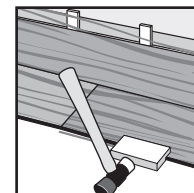
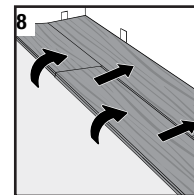
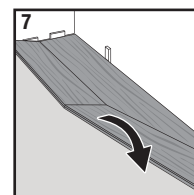
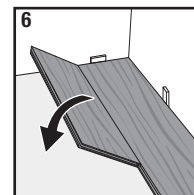
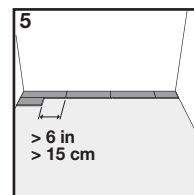
Place the short end of the plank at an angle against the previous installed plank and fold down to lock the short end joint (Fig.7)

Lift up the second row at a slight angle above the floor. Push the second plank long edge into the previous row groove and fold it partially down. Remove the wedges if any. Then fold the second row completely down to lock the joints (Fig.8).

Note: If there are tiny gaps between the planks at the joints, it can be removed with the help of a tapping block.

AFTER 2 - 3 ROWS

Adjust the distance to the front wall by placing spacers. Keep the spacers in position during the entire time of installation and remove once the installation is completed (Fig. 9).



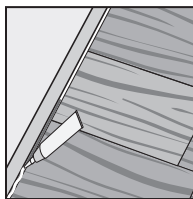
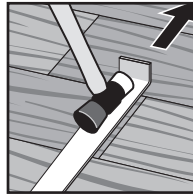
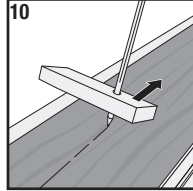
HOME DECORATORS COLLECTION	Installation Instructions For Assistance, Call: 1-877-630-1800 For latest revision, visit Homedepot.com/homedecorators	Product Description Engineered Hardwood Water Resistant Click lock/Click lock (Long side/Short side)	Grade Levels Above Grade On Grade Below Grade	Installation Method Floating Indoors Only	Warranty Lifetime Residential 5 Yrs. Light Commercial
--	---	---	---	--	---

Installation Procedures (Continued)

THE LAST ROW (and perhaps also first row). Minimum width 2 inches (50.8 mm). Place a spacer to the wall before measuring. Make a simple drawing tool (piece of wood with a hole) and mark the panel along the wall. Cut the panels lengthwise including the flexible tongues (Fig.10).

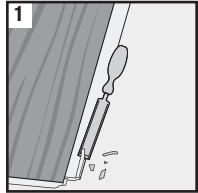
When there is not enough space to use a tapping block to lock the joints, use a pull bar.

WET AREAS
 Seal the parameter of the flooring and other gaps around vertical objects. Fill the expansion gap with compressable PE foam backer rod, then use 100% silicone caulk over it to seal the gap.

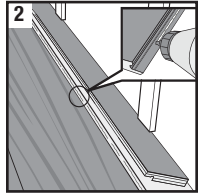


WHEN ANGLING IS NOT POSSIBLE

This situation usually occurs at door jamb undercut. Locate the groove side of the plank. Remove the raised part of groove with a chisel or grinder (Fig.1)




Apply beads of glue on the strip and push the panels horizontally together. Place some spacers between last board and the wall (Fig.2).



Finishing Touches

- Clean the floor.
- Use matching putty where necessary.
- Install or reinstall all wall trimpieces. Nail them through the wall, but not to the subfloor to avoid restricting the expansion gap.
- Install transition trimpieces. Nail them to the subfloor, not the flooring.
- At doorways, transitions should be used to protect the edges of the floor and to provide a decorative transition from one floor type to another.
- If the floor is to be covered, use a breathable material such as cardboard. Do not cover with plastic.

	Installation Instructions For Assistance, Call: 1-877-630-1800 For latest revision, visit Homedepot.com/homedecorators	Product Description Engineered Hardwood Water Resistant Click lock/Click lock (Long side/Short side)	Grade Levels Above Grade On Grade Below Grade	Installation Method Floating Indoors Only	Warranty Lifetime Residential 5 Yrs. Light Commercial
---	---	---	---	--	---

Care and Maintenance

DAILY MAINTENANCE

- Sweep dust mop or vacuum your floor regularly to remove any particles that could cause abrasion or scratch your floor. CAUTION: Vacuums with a beater bar or power rotary brush head can damage a floor and should never be used.
- Use a damp mop to remove spots and soil. Apply appropriate cleaning solution to the cleaning cloth / mop. Do NOT apply directly to the floor.
- For lightly soiled area, clean with distilled water.
- For moderately soiled area, use a mild solution of isopropyl alcohol and distilled water. Isopropyl alcohol is commonly referred to as rubbing alcohol and is sold in 50% to 70% concentrations. This product should be diluted by mixing one part alcohol and 2 parts distilled water.
- For tougher spots, use a higher concentration of isopropyl alcohol and distilled water.

Hint: For best results, clean the floor in the same direction of the planks. When the cleaning cloth/mop becomes soiled, rinse or replace it with a clean one. Rinse the floor thoroughly with damped mop and soak up residual water completely. Following up with a clean, dry cloth will remove residual streak marks and spots.

- Do not use chlorinated solvents.
- Do not use wax or varnish coating.
- Do NOT use a steam cleaner.
- Do not leave any amount of liquids (water, juice, soft drinks, spills, etc.) on the floor. Clean any wet spots immediately.
- Do not use steel wool or scouring powder which will scratch the floor.

BRANDED OF OFF-THE-SHELF FLOOR CARE PRODUCTS

If none of the above are effective and you choose to use a store bought product, test the product in a non-conspicuous area (i.e., closet, corner, or scrap pieces) for potential adverse side effects.

PREVENTATIVE MAINTENANCE

- Protect your floor when using a dolly for moving furniture or appliances. Protective sheets and/or plywood may be needed. Never slide or roll heavy furniture or appliances across the floor.
- Place protective pads beneath furniture legs and other heavy objects.
- Do not use rubber backed rugs.
- Minimize abrasive material and dirt by placing mats on both sides of exterior doors and by using area rugs in high-traffic areas.
- Rearrange furniture and rugs periodically to avoid uneven color and shade changes from light exposure.
- Avoid exposure to extreme sunlight. Close curtain or blinds during such times.
- Use protective mats beneath rolling chairs.
- Keep furniture casters clean.
- Use soft non-rubber wheels for office chairs.
- Keep pets' nails trimmed.
- Remove shoes with cleats, spikes or exceptionally pointy heels before walking on the floor.

CIMATE MAINTENANCE

Care should be taken to control temperature.

Extreme temperature changes may result in unacceptable thermal expansion or contraction of the flooring. Acceptable temperature range is 60° F to 80° F. Extreme humidity changes may result in unacceptable expansion or contraction of the flooring. Acceptable Relative Humidity (RH) range 35% to 55%. Expansion may cause buckling or edge peaking. Shrinkage may result in gapping.

Once shrinkage or expansion has taken place, the floor will not appear as it was initially installed. This is not a manufacturing defect.

FLOOR REPAIR

- Very light and small surface scratches can be repaired with a staining "touch up" pen of the appropriate color.
- Slightly deeper scratches can be repaired by means of colored putty or stains. Fill the scratches with the putty. Level with putty knife. Wipe off excess putty.
- Very deep scratches may require the replacement of the planks.