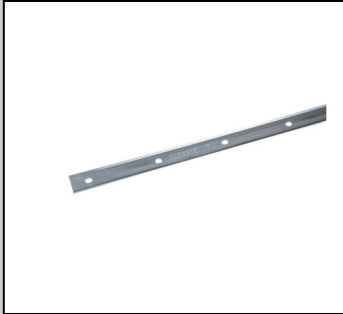


# Technical Information Sheet



## TERMINATION BAR

Item Description	Item Number
10' x 1.08" x 0.087" (3.1 m x 27.4 mm x 2.2 mm)	W56RAC3061

### DESCRIPTION

Termination Bar is intended for attaching and sealing flashing terminations as outlined by Elevate Specifications and Details.

### METHOD OF APPLICATION

1. Substrates must be free from dust, dirt, oil, water, and other contaminants. Wall areas above Termination Bar must be waterproof. Install per Elevate Specifications and Details.
2. Install a continuous bead of Elevate Water Block Seal behind top of flashing.
3. Anchor bar through pre-punched holes to maintain constant compression (max. 12" o.c. (305 mm)).
4. Install flat side of bar towards flashing so a reservoir is formed along the top edge for Elevate sealant.
5. Keep each 10' (3.1 m) length of Termination Bar separated from adjoining bar by 1/4" (6.3 mm).
6. Install termination bar vertically where base flashing(s) end.
7. Remove excess flashing material showing above the bottom of sealant reservoir channel.
8. Install Elevate AP Sealant into reservoir channel.

### STORAGE

Store in original unopened containers protected from the weather.

### PRECAUTIONS

- Do not use as a batten strip.
- Where field cutting is necessary, remove any burrs from bar ends.
- Clean up shavings, etc. that may occur from field cutting.
- Termination bars must be installed directly to the wall surface, not to existing sheet metal, flashings, etc.
- Install termination bar on hard, smooth surfaces only. Do not install on substrates where seal is lost at mortar joints, etc.
- Do not install termination bar to wood or other porous surfaces.

## LEED® INFORMATION

Post-Consumer Recycled Content: 0%  
 Post Industrial Recycled Content: 67%  
 Manufacturing Location: Cleveland, OH  
 NOTE: LEED® is a registered trademark of the U.S. Green Building Council



## PRODUCT PACKAGING

Per Piece	10' (3 m)
Per Cardboard Tube	50 Pieces
Weight	86 lb (39 kg) per tube

## TYPICAL PROPERTIES

Properties	Value
Material	6063-T5, or T6 Aluminum
Length	10' (3.1 m)
Height	1.08" (27.4 mm)
Thickness	0.087" (2.2 mm)
Holes	Slotted, 0.28" x 0.39" (7.1 x 9.9 mm) 30 at 3.9" (99.8 mm) o.c.

Please contact Elevate Technical Services at 800-428-4511 for further information.

This sheet is meant to highlight Elevate products and specifications and is subject to change without notice. Amrize takes responsibility for furnishing quality materials that meet published Elevate product specifications or other technical documents, subject to normal manufacturing tolerances. Neither Amrize nor its representatives practice architecture. Amrize offers no opinion on and expressly refuses any responsibility for the soundness of any structure. Amrize accepts no liability for structural failure or resultant damages. Consult a competent structural engineer prior to installation if the structural soundness or structural ability to properly support a planned installation is in question. No Amrize representative is authorized to vary this disclaimer.