


16 Gauge Sinks

Product ID IZRUU

	QTY	Product ID	Series	Product Type	Description	Color	Stock*	Expected Stock*	Expected Stock ETA*
	1	IZRUU	N/A	Bathroom Sink Faucet	3H8-in. Matte Bathroom Sink Faucet Black Stainless Steel	Black	999	0	

\*Estimated as of 23 Aug 2024 1:18 PM.

Quality control approved in Canada. Each box on your order is physically opened-up and inspected to make sure only the highest quality product is shipped. We take and store photos of every single quality audit of every single order we ship. You can see them when you track your order on our website. This product is not a group of multiple products but a unique SKU. It features a square shape. This bathroom sink faucet is designed to be installed as a above counter bathroom sink faucet. It is constructed with stainless steel. This bathroom sink faucet comes with a matte finish in Black color. It is designed for a 3h8-in. faucet.

**Feature(s):**

- THIS PRODUCT INCLUDE(S): 1x bathroom sink faucet in black color.
- THE BLACK FAUCET IS MADE OF PREMIUM GRADE SUS304 STAINLESS STEEL WITH 188 CHROMIUM-NICKEL TO PROTECT AGAINST CORROSION AND RUST, ENSURING ITS LONG SERVICE LIFE AND REQUIRING LITTLE MAINTENANCE.
- THE MAIN BODY OF THE FAUCET IS MADE OF NO-LEAD MATERIALS, CERTIFIED BY CUPC, NSF, AND COMPLIED WITH THE SAFE DRINKING WATER ACT SDWA, UNIFORM PLUMBING CODE CERTIFIED BY IAMPO AND NSFAB1953 NO-LEAD REGULATION, PROVIDING EXCELLENT HEALTH CARE FOR YOUR FAMILY.
- THE UPGRADED DESIGN OF THE NOVEL WATER OUTLET PREVENTS SPLASHING AND RELEASES A CLEAR, NATURAL STREAM OF WATER THAT MIMICS A WATERFALL, WITH A FLOW RATE OF 1.2 GPM 4.5 LMIN AT 60 PSI THAT CAN SAVE WATER AND REDUCE UTILITY EXPENSES.
- IT COMES WITH ONE-PIECE HANDLE BODY FOR EASY INSTALLATION, AND THE PREMIUM SUPPLY HOSES COME WITH A NYLON-BRAIDED EXTERIOR THAT PROTECTS AGAINST CHEMICAL CORROSION AND RUSTING, AND THE INNER TUBING IS MADE FROM PEX, WHICH IS SAFE FOR DRINKING WATER.
- THE STANDARD 38 COMPRESSION THREADS WILL EASILY CONNECT TO YOUR STOP VALVES, AND THE SUPPLY HOSES ALSO HAVE MILLION-DOLLAR GLOBAL INSURANCE COVERAGE.
- This bathroom sink faucet features a square shape with a modern style.
- This product is made for above counter installation.
- DIY installation instructions are included in the box.
- This bathroom sink faucet is designed for a 3h8-in. faucet and the faucet drilling location is on the deck mount.
- This bathroom sink faucet is made with stainless steel.
- The primary color of this product is black and it comes with black hardware.
- 13.5-in. Width (left to right).
- 2.2-in. Depth (back to front).
- 10.4-in. Height (top to bottom).
- All dimensions are nominal.
- This product can usually be shipped out in 1-5 day.
- Quality control approved in Canada.
- Each box on your order is physically opened-up and inspected to make sure only the highest quality product is shipped.
- We take and store photos of every single quality audit of every single order we ship.
- You can see them when you track your order on our website.

**Keyword(s):**

bathroom sink faucet single item, square bathroom sink faucet, above counter bathroom sink faucet, bathroom sink faucet with above counter installation, 3h8-in. faucet bathroom sink faucet, bathroom sink faucet with 3h8-in. faucet, bathroom sink faucet with deck mount faucet, deck mount faucet bathroom sink faucet, bathroom sink faucet without overflow, bathroom sink faucet with faucet, bathroom sink faucet without drain, stainless steel bathroom sink faucet, modern bathroom sink faucet, bathroom sink faucet with matte finish, black bathroom sink faucet, black color bathroom sink faucet, black colour bathroom sink faucet, for bathroom, in faucet

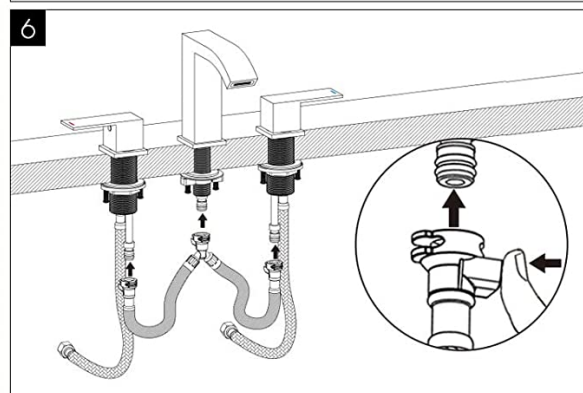
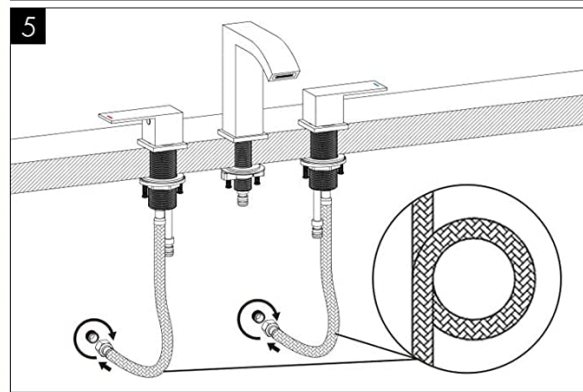
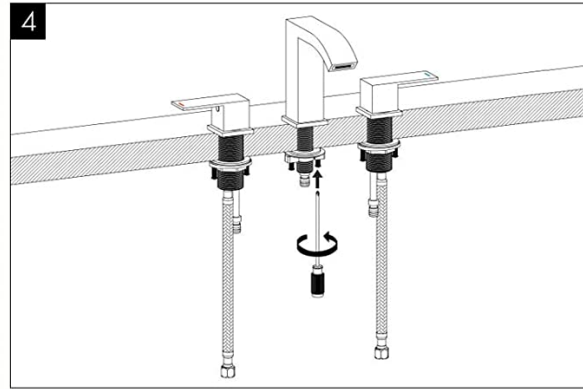
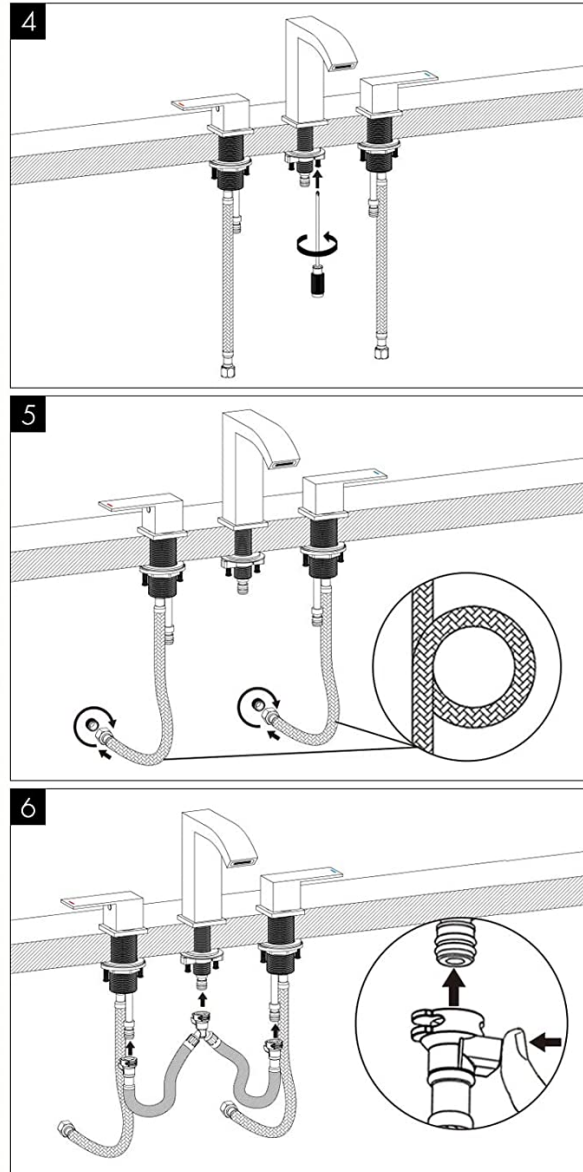
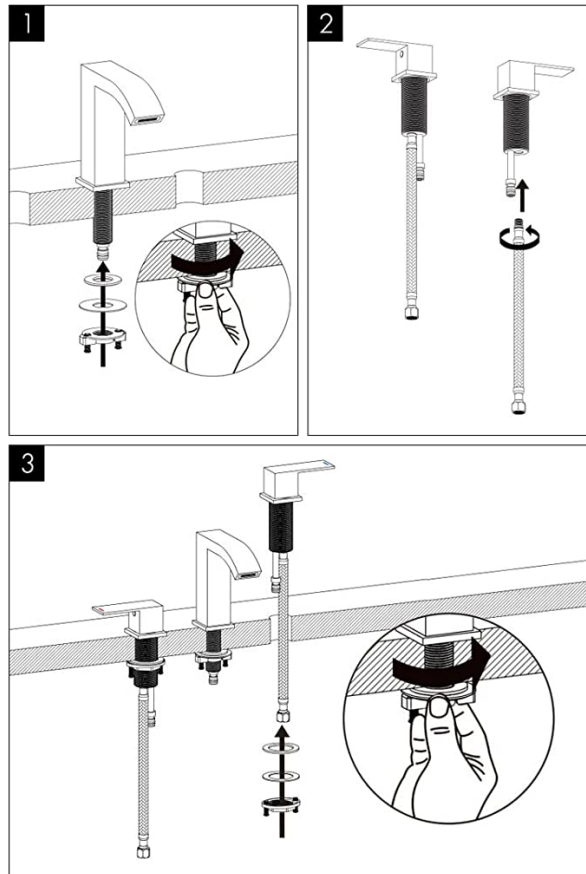
Product ID:	IZRUU
Product Type By Room:	Bathroom
Product Type By Group:	Faucet
Product Type:	Bathroom Sink Faucet
Shape:	Square
Install Type:	Above Counter
Faucet Drilling:	3H8-in.
Faucet Drilling Location:	Deck Mount
Overflow:	No
Includes Faucets:	Yes
Includes Spout:	No
Includes Keys:	No
Includes Drains:	No
Deadbolt:	No

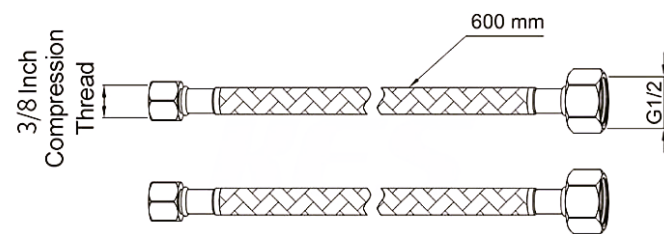
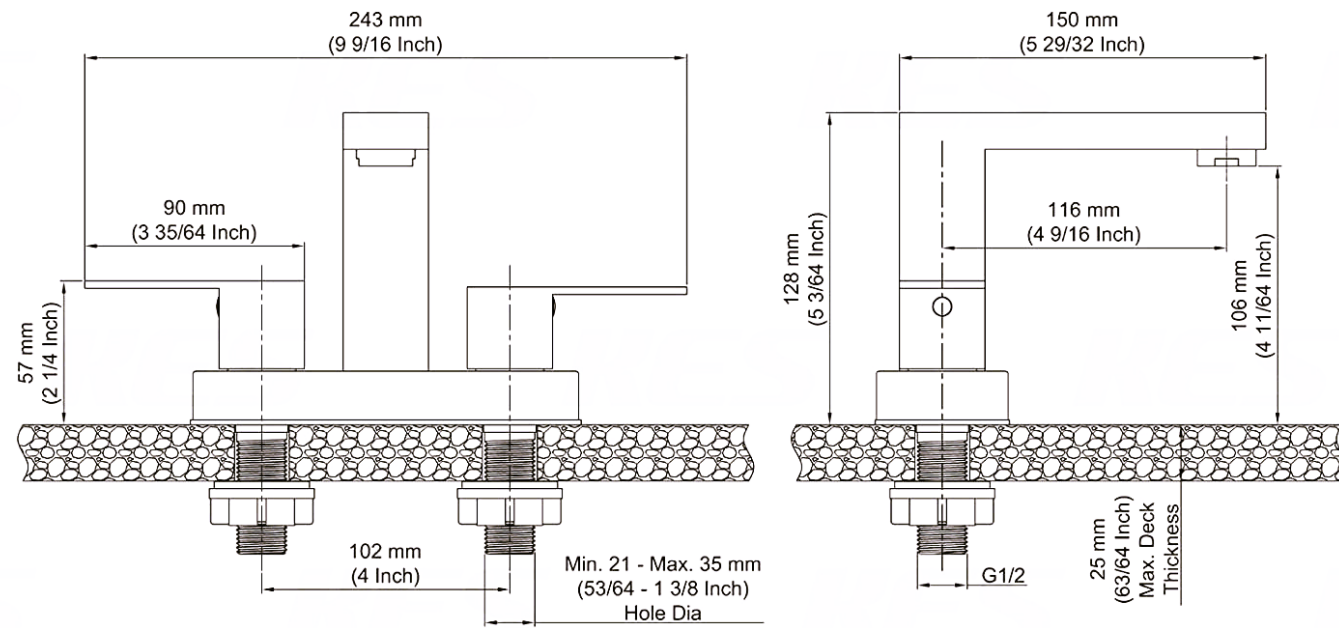


# Easy to Install

## FAUCET INSTALLATION

Before installation, you should ideally flush your plumbing pipes to clear any debris or sediment by letting the water run for a few minutes (you can save the water in a bucket for watering plants or other uses). Next, turn off your sink's water supply. If the water supply lines are too long, they should be folded like Figure 5. A kinked line may cause water damage.





[illegible]