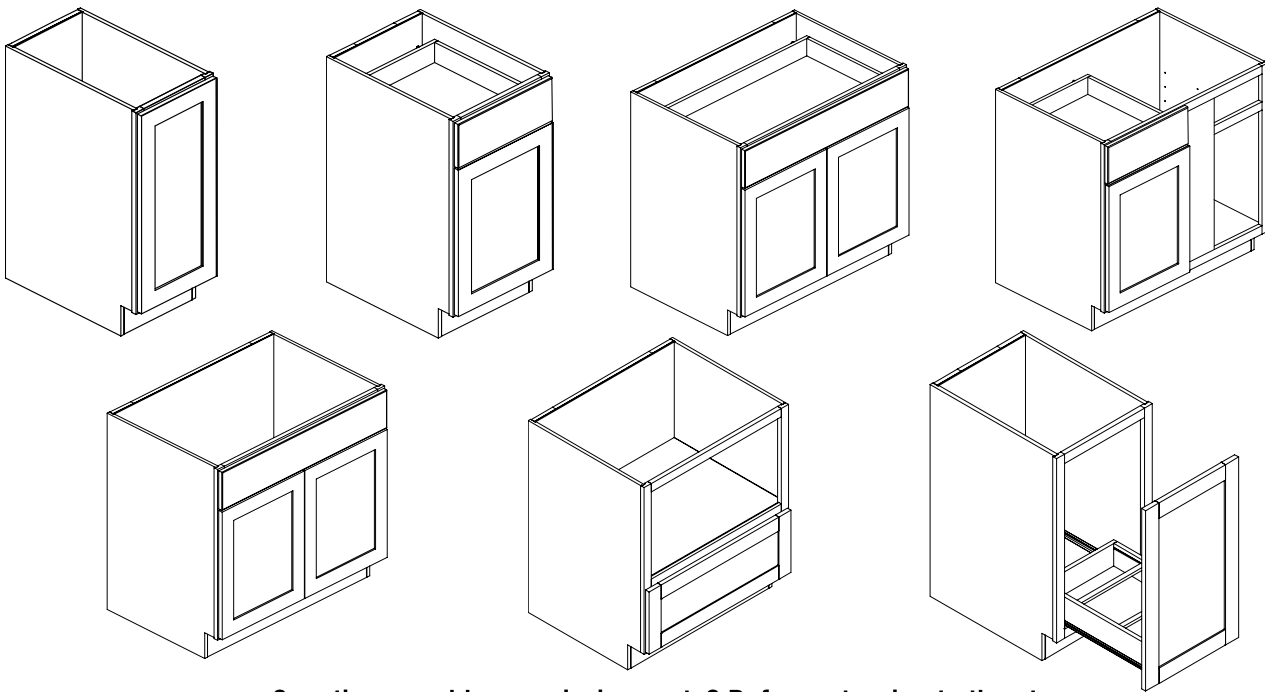


HAMPTON BAY[®]

USE AND CARE GUIDE

**STANDARD BASE / BLIND BASE/
SINK BASE/VANITY SINK BASE/ MICROWAVE BASE CABINET/TRASH CAN**



Questions, problems, missing parts? Before returning to the store,
call Hampton Bay Customer Service
8 a.m. – 7 p.m., EST, Monday – Friday, 9 a.m. – 6 p.m., EST, Saturdays

1-855-HD-HAMPTON

HAMPTONBAY.COM

THANK YOU

We appreciate the trust and confidence you have placed in Hampton Bay through the purchase of this Cabinet. We strive to continually create quality products designed to enhance your home. Visit us online to see our full line of products available for your home improvement needs. Thank you for choosing Hampton Bay!

Table of Contents

Table of Contents.....	2	Pre-Assembly	4
Safety Information.....	2	PACKAGE CONTENTS.....	4
CALIFORNIA RESIDENTS.....	2	Cabinet Assembly	6
MINNESOTA RESIDENTS	2	Cabinet Assembly (Continued)	8
Warranty	2	Drawer Assembly.....	10
Pre-Assembly	3	Cabinet Assembly (Continued)	12
BEFORE YOU BEGIN.....	3	Before putting in use	16
PEOPLE REQUIRED	3	Blind Base Cabinet Installation	17
TOOLS REQUIRED	3	Care and Cleaning	17
IMPORTANT	3		
HARDWARE INCLUDED	3		

Safety Information

Please read and understand these instructions before you begin this assembly.

CALIFORNIA RESIDENTS



WARNING: This product can expose you to chemicals including Formaldehyde (GAS), which is [are] known to the State of California to cause cancer. For more information go to WWW.P65Warnings.ca.gov/products.

MINNESOTA RESIDENTS

IMPORTANT HEALTH NOTICE

SOME OF THE BUILDING MATERIALS USED IN THIS HOME (OR THESE BUILDING MATERIALS) EMIT FORMALDEHYDE. EYE, NOSE, AND THROAT IRRITATION, HEADACHE, NAUSEA AND A VARIETY OF ASTHMA-LIKE SYMPTOMS, INCLUDING SHORTNESS OF BREATH, HAVE BEEN REPORTED AS A RESULT OF FORMALDEHYDE EXPOSURE. ELDERLY PERSONS AND YOUNG CHILDREN, AS WELL AS ANYONE WITH A HISTORY OF ASTHMA, ALLERGIES, OR LUNG PROBLEMS, MAY BE AT GREATER RISK. RESEARCH IS CONTINUING ON THE POSSIBLE LONG-TERM EFFECTS OF EXPOSURE TO FORMALDEHYDE.

REDUCE VENTILATION MAY ALLOW FORMALDEHYDE AND OTHER CONTAMINANTS TO ACCUMULATE IN THE INDOOR AIR. HIGH INDOOR TEMPERATURES AND HUMIDITY RAISE FORMALDEHYDE LEVELS. WHEN A HOME IS TO BE LOCATED IN AREAS SUBJECT TO EXTREME SUMMER TEMPERATURES, AN AIR-CONDITIONING SYSTEM CAN BE USED TO CONTROL INDOOR TEMPERATURE LEVELS. OTHER MEANS OF CONTROLLED MECHANICAL VENTILATION CAN BE USED TO REDUCE LEVELS OF FORMALDEHYDE AND OTHER INDOOR AIR CONTAMINANTS.

IF YOU HAVE ANY QUESTIONS REGARDING THE HEALTH EFFECTS OF FORMALDEHYDE, CONSULT YOUR DOCTOR OR LOCAL HEALTH DEPARTMENT.

Warranty

Contact the Customer Service Team at 1-855-HD-HAMPTON or visit [www. Hamptonbay.com](http://www.Hamptonbay.com).

Pre-Assembly

BEFORE YOU BEGIN

Compare all parts with the Hardware Included and Package Contents sections. If any part is missing or damaged, do not assemble this product. Contact Customer Service.

Assemble the cabinet on a soft surface such as carpet or the cardboard container of this product.

PEOPLE REQUIRED

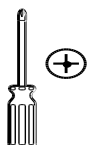


BASE CABINETS with a width greater than or equal to 27" , CORNER WALL CABINET, LAZY SUSAN CABINET, PANTRY, OVEN CABINET require two people to assemble.

TOOLS REQUIRED



Rubber mallet



Phillips screwdriver

IMPORTANT

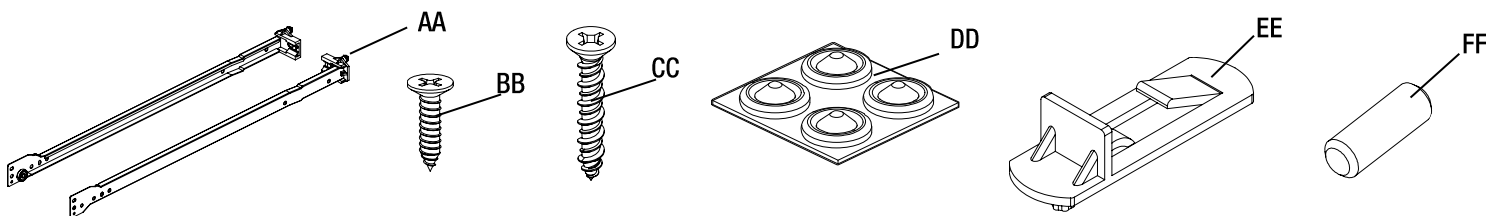


- Please note that the side panels are not paintable. However, if you need to customize them, you can find additional end panels available on the THD website or stores.
- The cabinet uses RTA - PERMANENT construction, which does not support disassembly once it has been assembled. To ensure a seamless assembly experience, we recommend carefully reviewing and adhering to the provided assembly instructions

HARDWARE INCLUDED



NOTE: Hardware not shown to actual size.



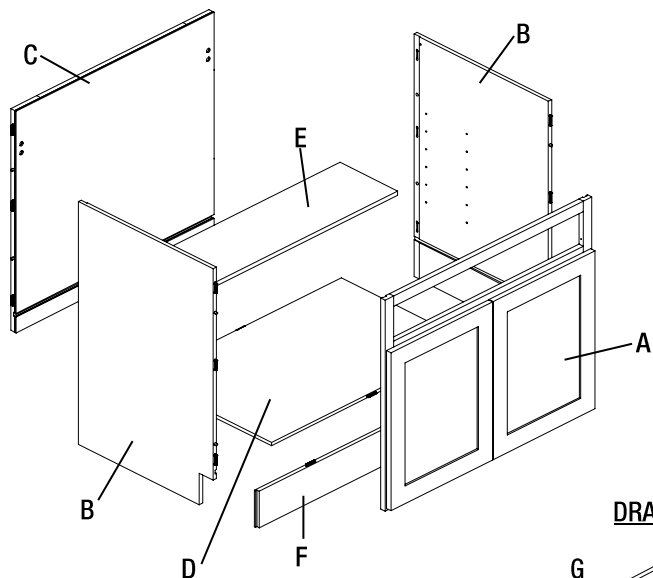
* Extras quantity is provided based upon your cabinet size/type/* 9 in. Base cabinets do not have a drawer.

Part	Description	Q.ty (Vanity) Sink Base	Q.ty Standard Base, Blind Base	Qty Microwave Base	Qty Trash can
AA	Cabinet Glides	0	1	1	1
BB	M4 x 15 mm Screws (silver)	0	2	2	2
CC	#8 x 1 in. Screws (yellow)	0	4	4	8
DD	Silicone Pads	4	6-8	4	4
EE	Shelf Pin	0	4	0	0
FF	Wooden dowel	2	2	2	2

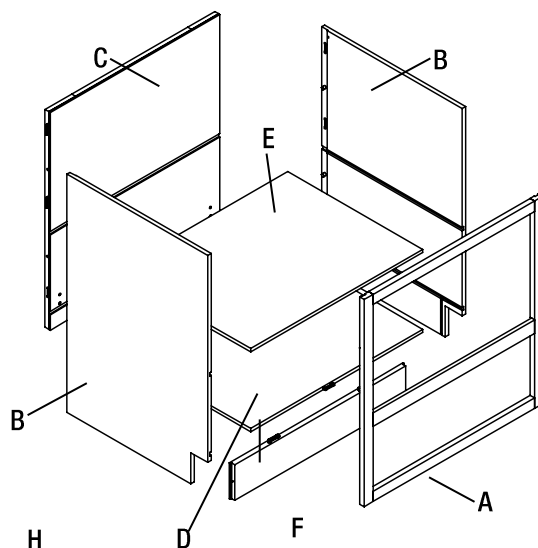
Pre-Assembly

PACKAGE CONTENTS

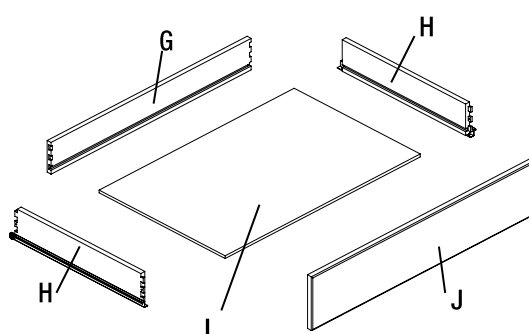
STANDARD/BLIND/SINK BASE CABINET CARCASS



MICROWAVE BASE CABINET CARCASS



DRAWER



Part	Description	Q.ty Sink Base, Vanity Sink Base	Q.ty Standard Base, Blind Base	Qty Microwave Base
CARCASS				
A	Face Frame and Doors	1	1	1
B	Side Panel	2	2	2
C	Back Frame	1	1	1
D	Bottom Panel	1	1	1
E	Shelf/Support shelf	0	1	1
F	Toe Kick	1	1	1

**** Sink base, Vanity sink base has no shelf.**

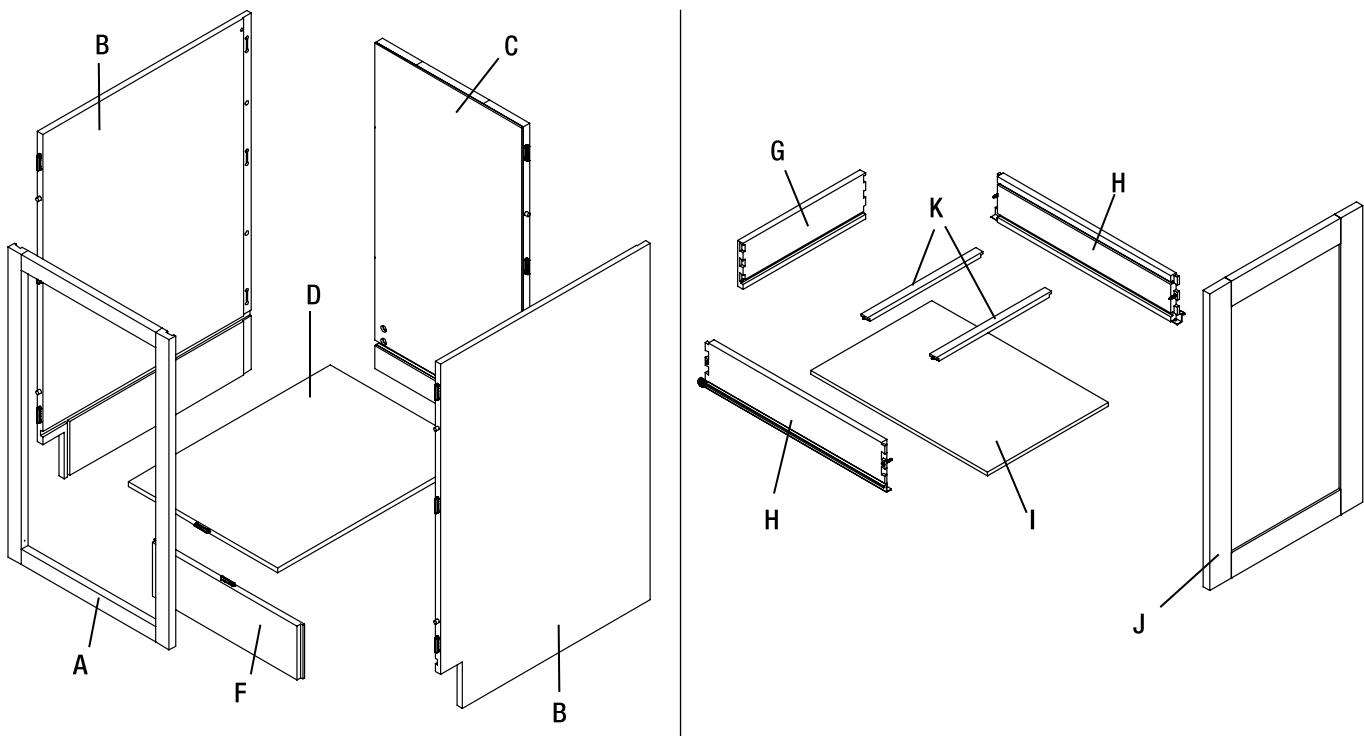
DRAWER				
G	Drawer Back	0	1	1
H	Drawer Side	0	2	2
I	Drawer Bottom	0	1	1
J	Drawer Front	0	1	1

*** 9 in. Base cabinets, Sink base, Vanity sink base do not have a drawer.**

Pre-Assembly

PACKAGE CONTENTS (CONTINUED)

TRASH CAN



Part	Description	Single trash can
CARCASS		
A	Face Frame	1
B	Side Panel	2
C	Back Panel	1
D	Bottom Panel	1
E	Shelf/Support shelf	0
F	Toe Kick	1
DRAWER		
G	Drawer Back	1
H	Drawer Sides	2
I	Drawer Bottom	1
J	Drawer Front	1
K	Bin holders	2

Cabinet Assembly

1 Attaching the side panels into the face frame

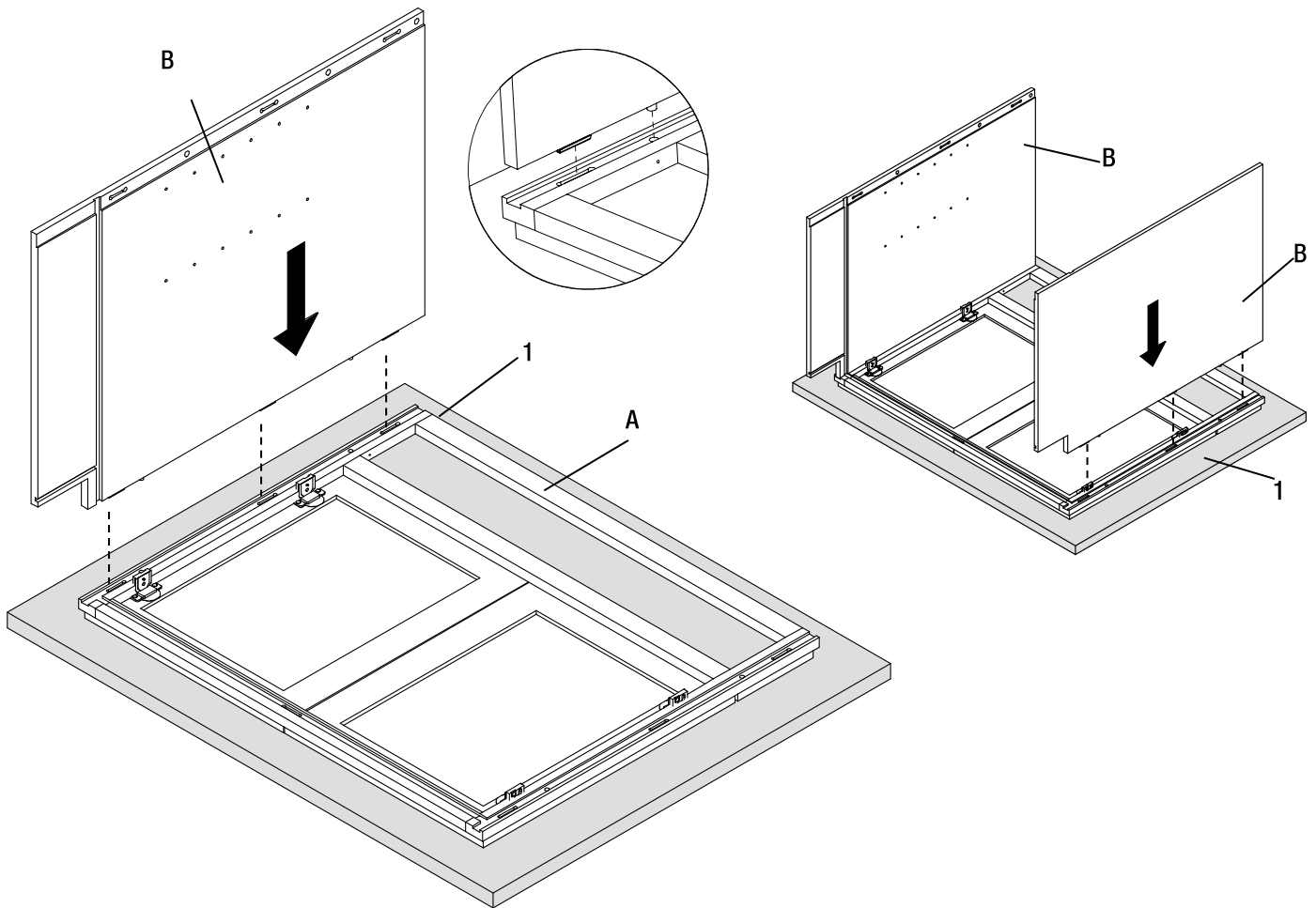
- Start by placing the face frame (A) flat on a smooth surface that will not scratch or damage the face of the cabinet, such as a towel or piece of cardboard (1) from the packaging.
- Install the two side panels (B) into the mating grooves on the face frame (A) by: aligning the wooden dowels & male connectors on side panel (B) to the holes & female connectors on face frame (A).
- Use both hands to firmly press the side panels (B) down at all locations with male/female connectors to ensure they lock together tightly.



IMPORTANT: There will be a “clicking” sound when the male/female connectors lock together properly.



NOTE: The quantity of connectors per panel depends on its size and type.



Cabinet Assembly

2 Attaching the bottom panel for all cabinets and attaching support shelf for Microwave Base only.

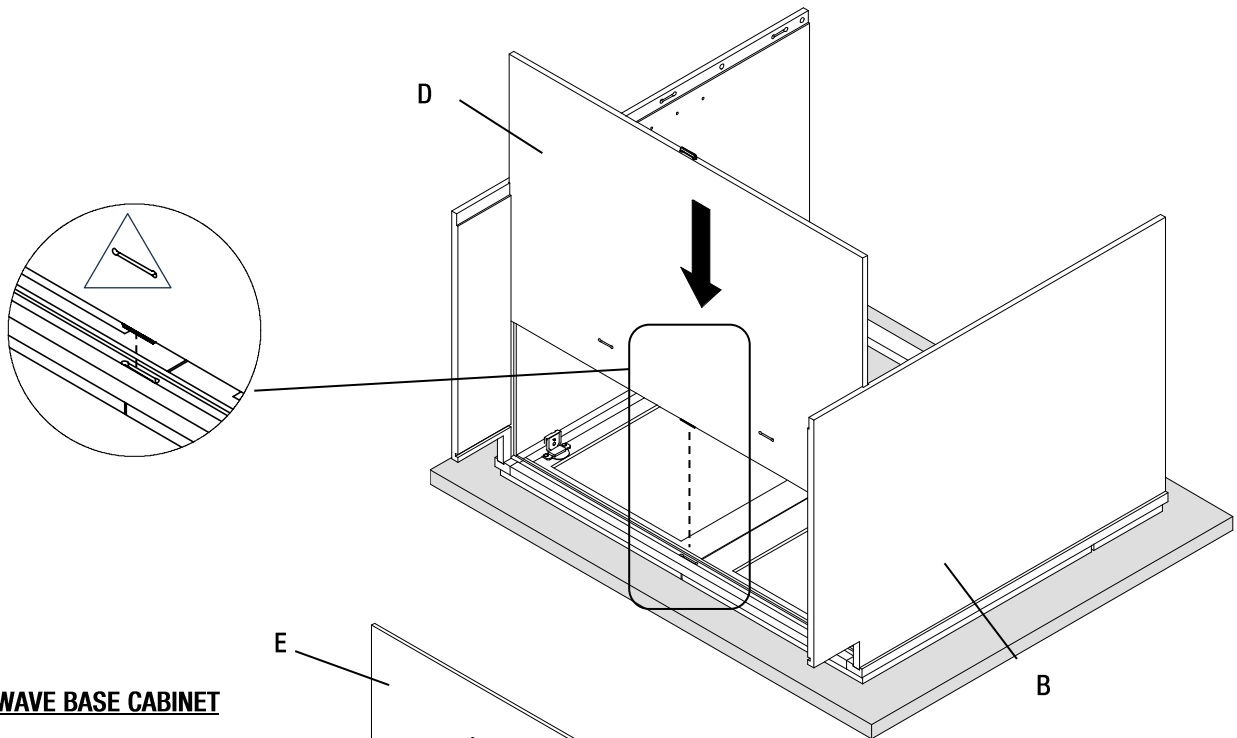
- Slide the bottom panel (D) (*and support shelf (E) for Microwave cabinet only) into grooves in the sides (B). Use both hands to firmly press the panel (D) down at all locations with male/female connectors to ensure they lock together tightly.



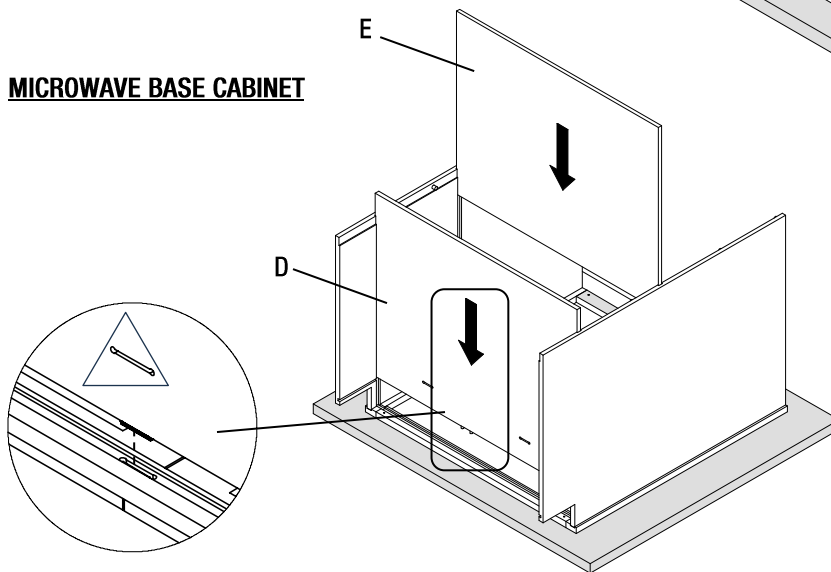
NOTE:

- Make sure the Δ female connector at the bottom panel (D) is facing out.
- (D) has the connectors on panel while (E) has no connector.

STANDARD/BLIND/SINK BASE CABINET/TRASH CAN



MICROWAVE BASE CABINET



Cabinet Assembly (Continued)

3 Attaching the back panel to the bottom panel/support shelf

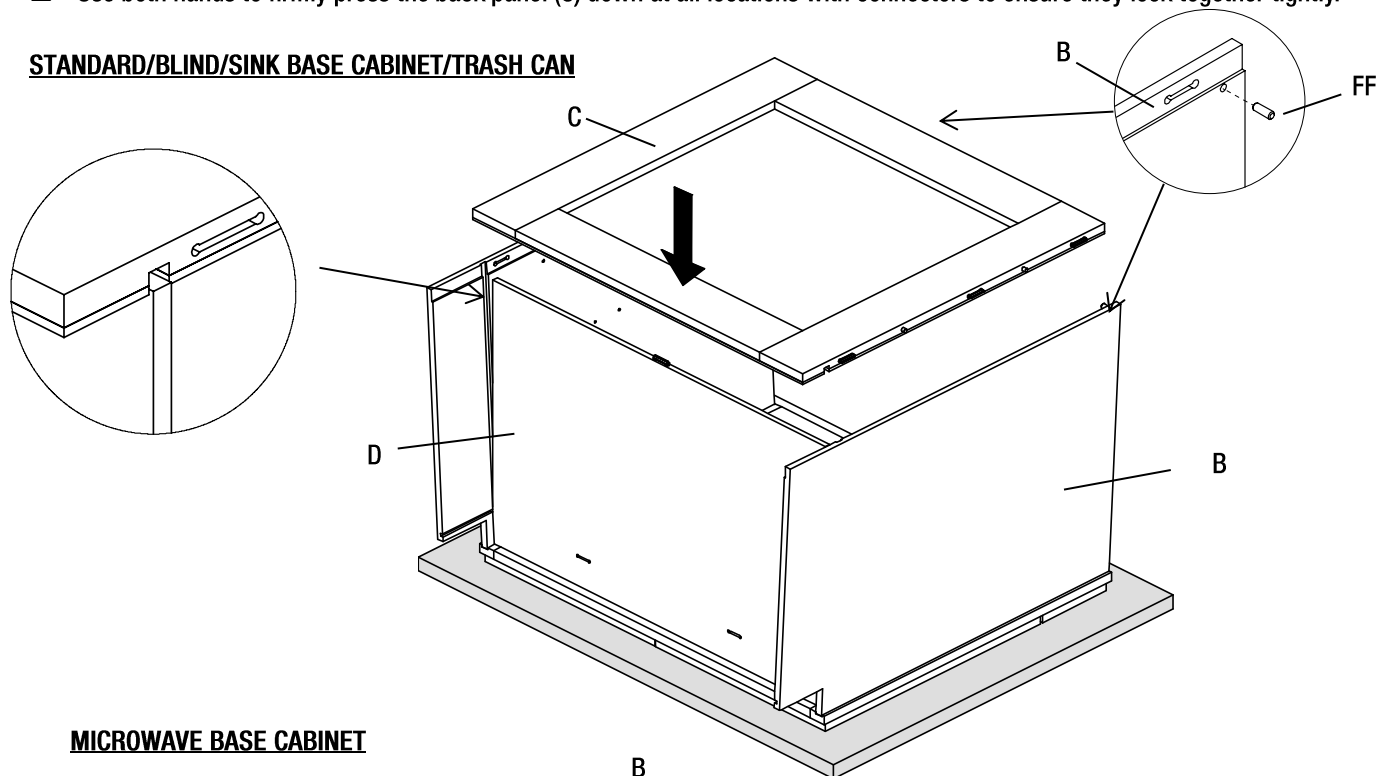
- Install the Wooden dowels (FF) into the pre-drilled hole in side panels (B) as shown. It helps hold the other end on the back panel. *It can be removed after assembly is completed.*



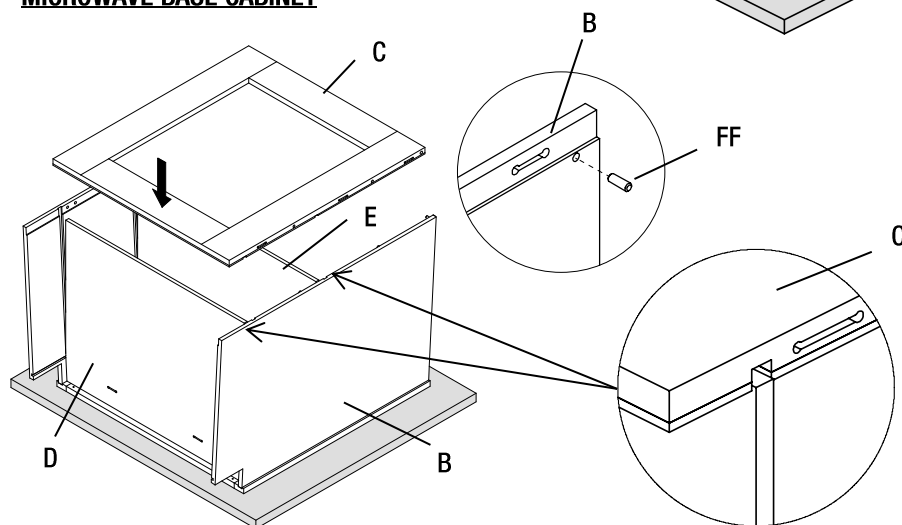
NOTE: 9" Base cabinet doesn't need the wooden dowels, you can skip above step

- Flex outwards 2 side panels (B) slightly then place mating groove on the back panel (C) to the bottom panel (D) *(and support shelf (E) only for Microwave Base only)* as shown.
- Aligning the female connectors on back panel (C) to the male connectors on bottom panels (D).
- Use both hands to firmly press the back panel (C) down at all locations with connectors to ensure they lock together tightly.

STANDARD/BLIND/SINK BASE CABINET/TRASH CAN



MICROWAVE BASE CABINET



Cabinet Assembly (Continued)

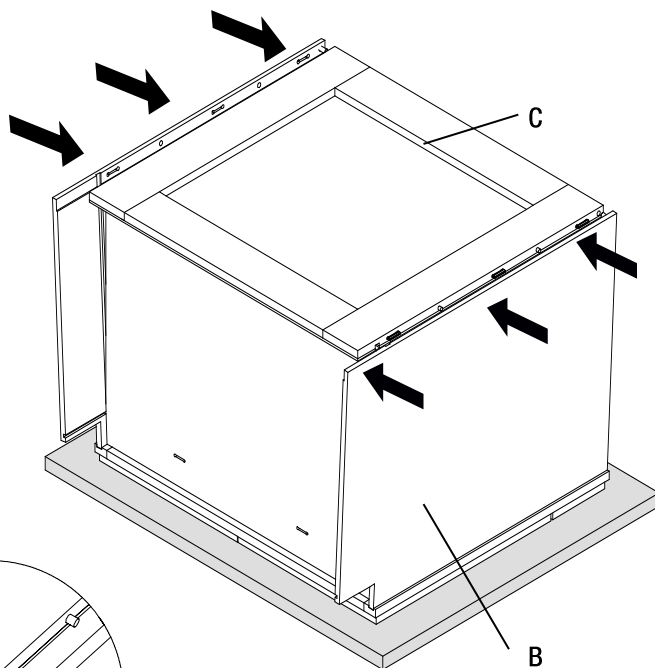
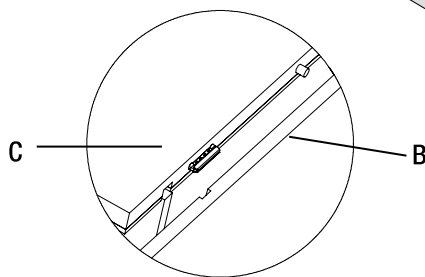
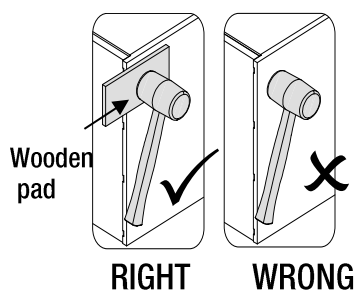
4 Attaching the side panels to bottom panel.

- Install the two side panels (B) to the back panel (C) by: aligning the wooden dowels & female connectors on the back panel (C) to the holes & male connectors on side panels (B).

IMPORTANT:



- Firstly, use hands to tap the 2 side panels (B) inward at all locations with connectors to ensure they lock together with (C) tightly.
- Then use a rubber mallet and wooden pad to support this process if you find it necessary, the wooden pad helps avoid damaging the product.

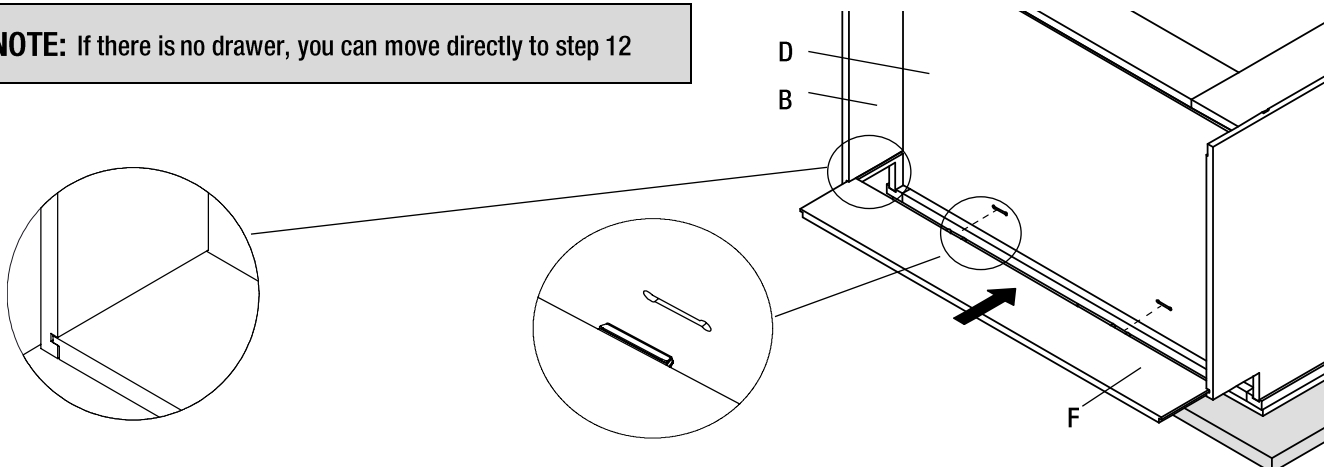


5 Attaching the toe kick

- Slide the toe kick (F) into grooves in sides (B), make sure the male connector on toe kick (F) is aligned with female connector on the bottom panel (D).
- Use both hands to firmly press toe kick (F) to ensure male/female connectors they lock together tightly.

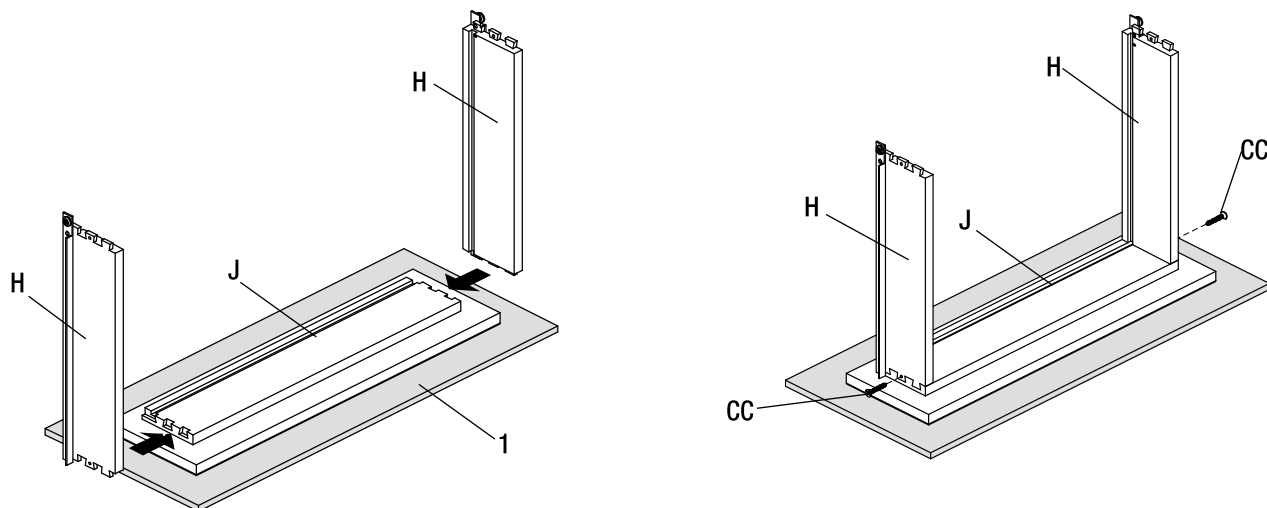


NOTE: If there is no drawer, you can move directly to step 12



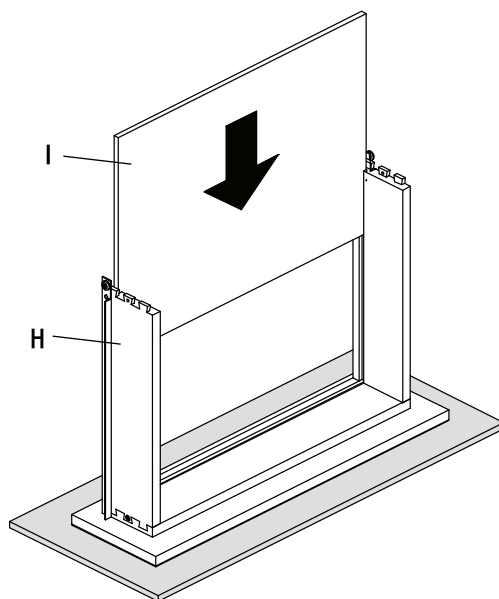
6 Attaching the drawer sides

- ☐ Place the drawer front (J) face down on a smooth surface that will not scratch or damage the face of the drawer, such as a towel or piece of cardboard (1) from the packaging.
- ☐ Use a rubber mallet to tap the drawer sides (H) into place on the drawer front (J).
- ☐ Insert a screw (CC) into the countersunk holes on each side, and **partially tighten**.



7 Attaching the drawer bottom

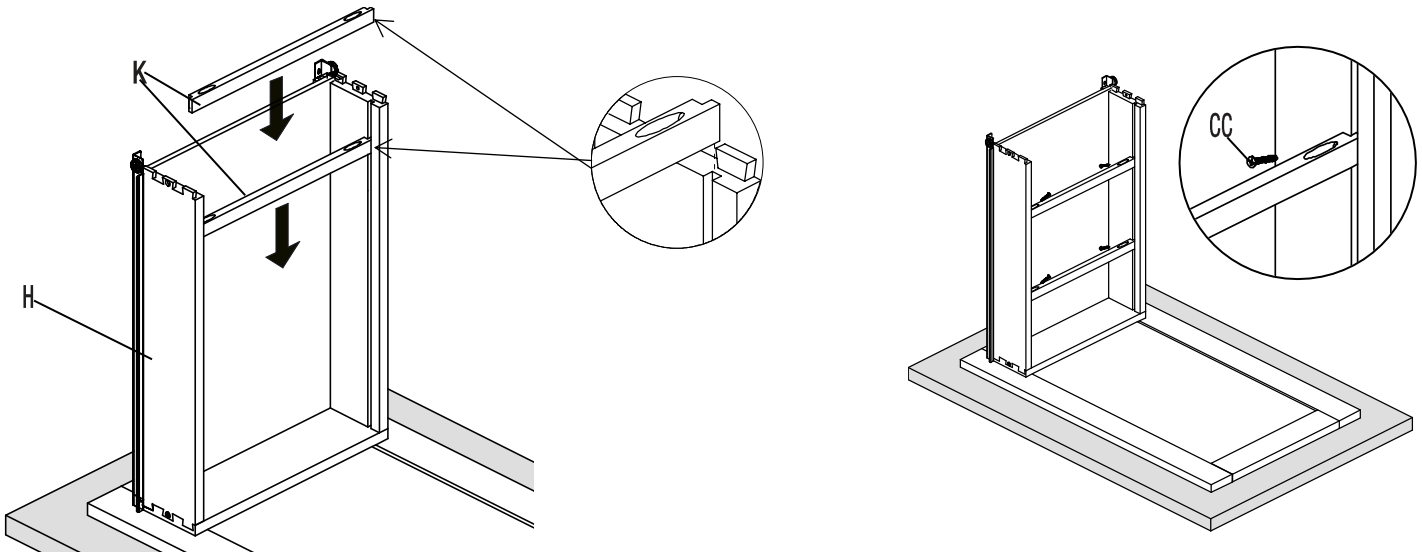
- ☐ Slide the drawer bottoms (I) into the grooves on the sides of the drawer assembly.



Drawer Assembly

8 Attaching the Bin holder (For trash can only)

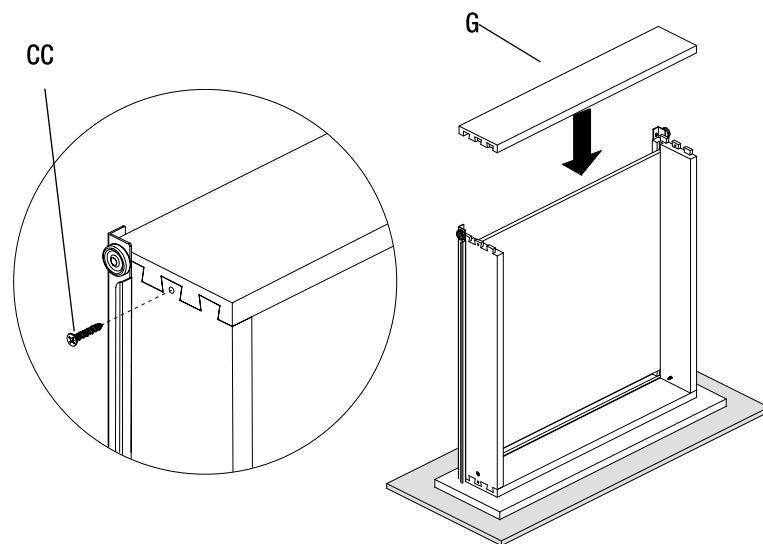
- ☐ Slide Bin holders (K) into grooves on the drawer sides (H).
- ☐ Align Bin holders' position to desired trash can location. Secure 2 Bin holders with sides by 4 screws (CC)



9 Attaching the drawer back

- ☐ Use a rubber mallet to tap the drawer back (G) into place. To fit the drawer back on, drawer sides will have to flex outwards slightly.
- ☐ Insert two more screws (CC) into the countersunk holes on each side. **Fully tighten** all four screws.

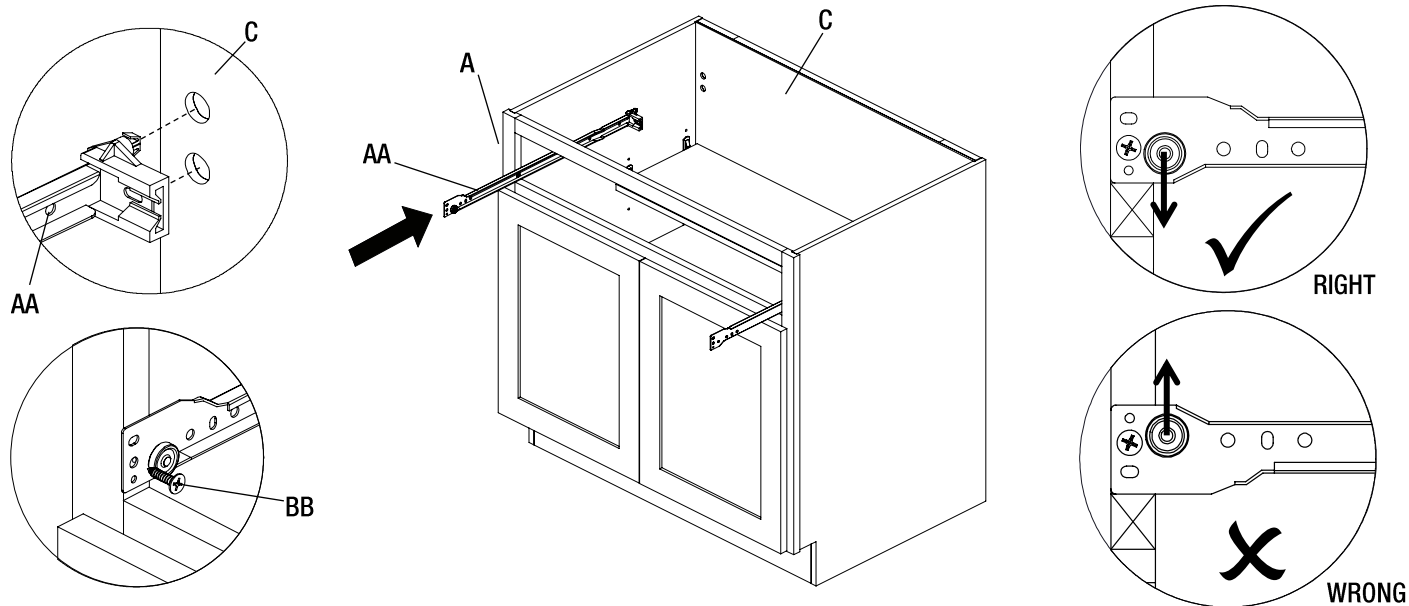
OTHER CABINETS



Cabinet Assembly (Continued)

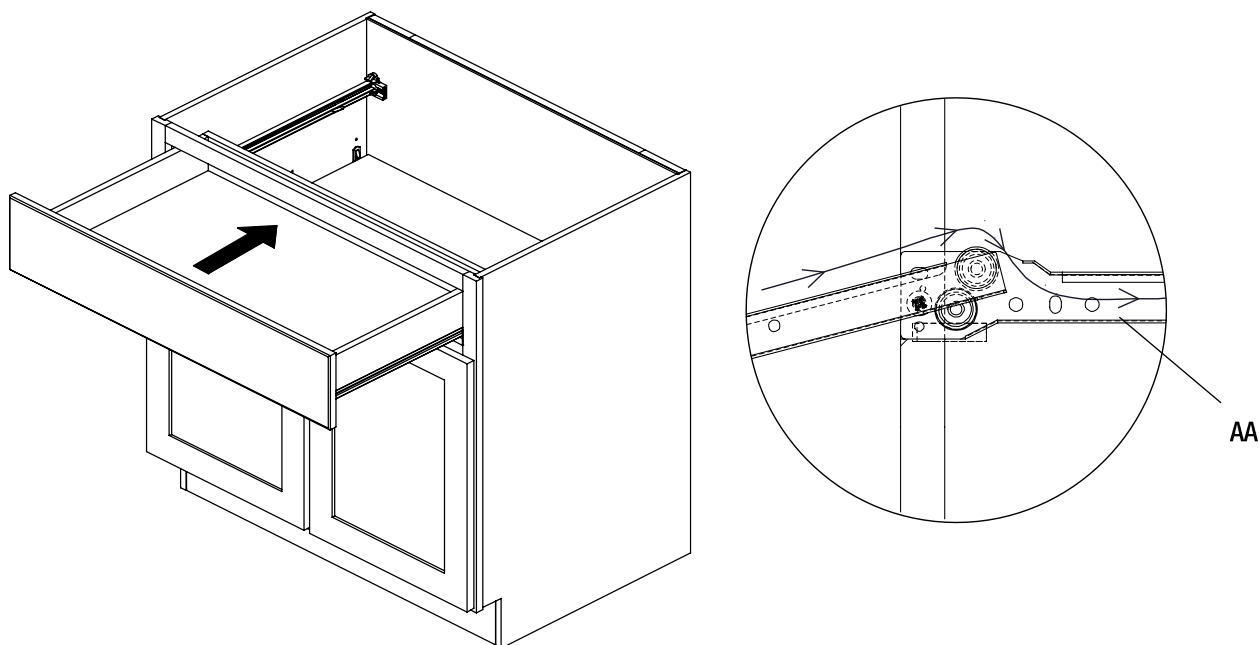
10 Attaching the cabinet glides

- Install the cabinet slides (AA) into the pre-drilled hole on the back panel (C) and secure with screws (BB) to the pre-drill hole on face frame (A)



11 Installing/Removing the drawer

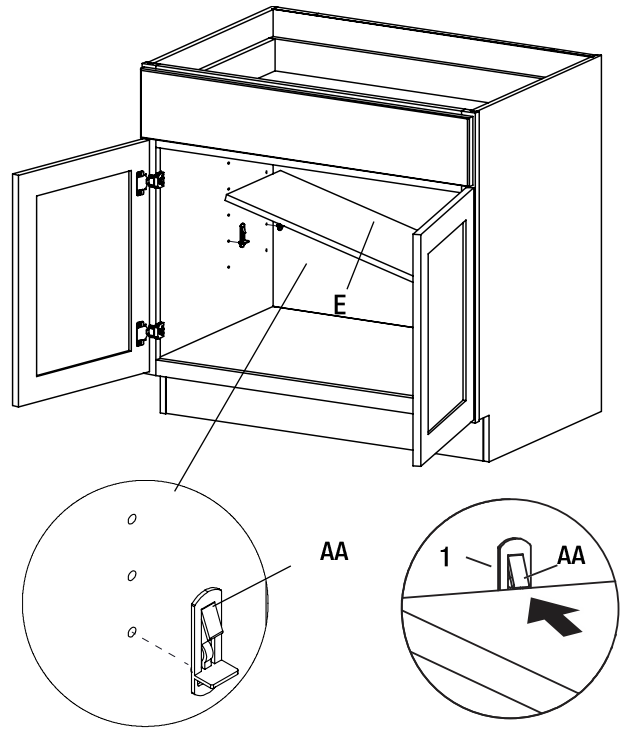
- Align the drawer slides with the slides on cabinet (AA) then slide in the direction of the arrow into position.
- Do it in the opposite direction of the arrow to remove the drawer.



Cabinet Assembly (Continued)

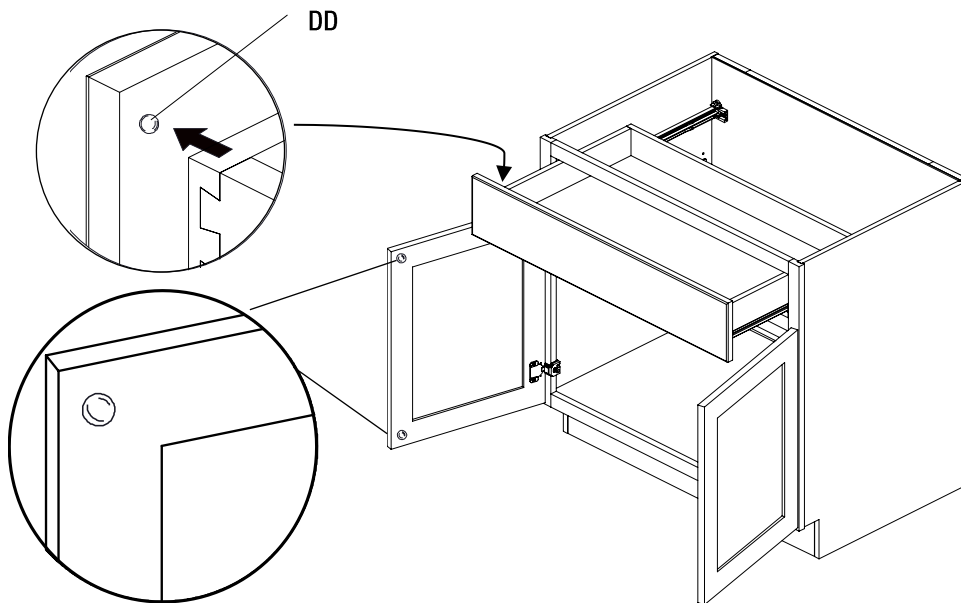
12 Installing the shelves

- ☐ Insert the shelf pins with pre-drilled holes on each side panel.
- ☐ Tilt the shelf (E) to fit inside the face frame and snap over the shelf pins (EE).
- ☐ To remove the shelf, push the tabs (1) on the shelf pins and lift the shelf.



13 Attaching silicone pads

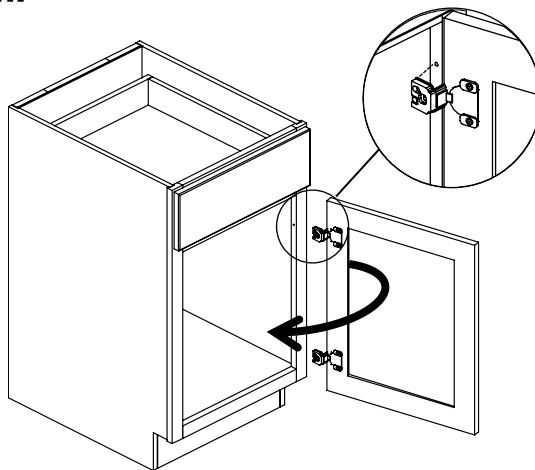
- ☐ Peel and stick 2 silicone pads (DD) onto the inside corners of each door and 4 silicone pads (DD) onto the inside corners of each drawer.



Cabinet Assembly (Continued)

14 (OPTIONAL) Reversing the door position.

- You can remove and reposition the door to the other side of the face frame at any time using the pre-drilled holes. For pre-drilled holes that are not used, you can cover them up using a wax pencil or touch-up paint pen.

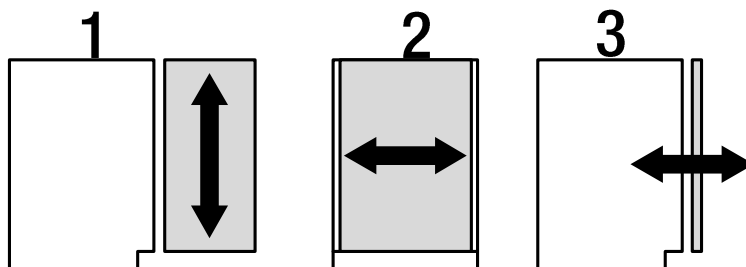
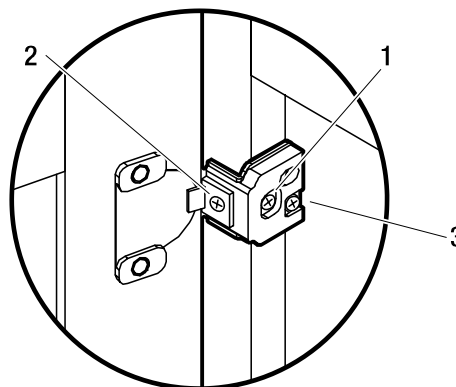


15 (OPTIONAL) Adjusting the door.

- Door hinges are 6-way adjustable.
- Up or down adjustment – Loosen screw 1, align the door, and tighten screw 1.
- Left or right adjustment – Turn screw 2 clockwise or counterclockwise.
- In or out adjustment – Turn screw 3 clockwise or counterclockwise.



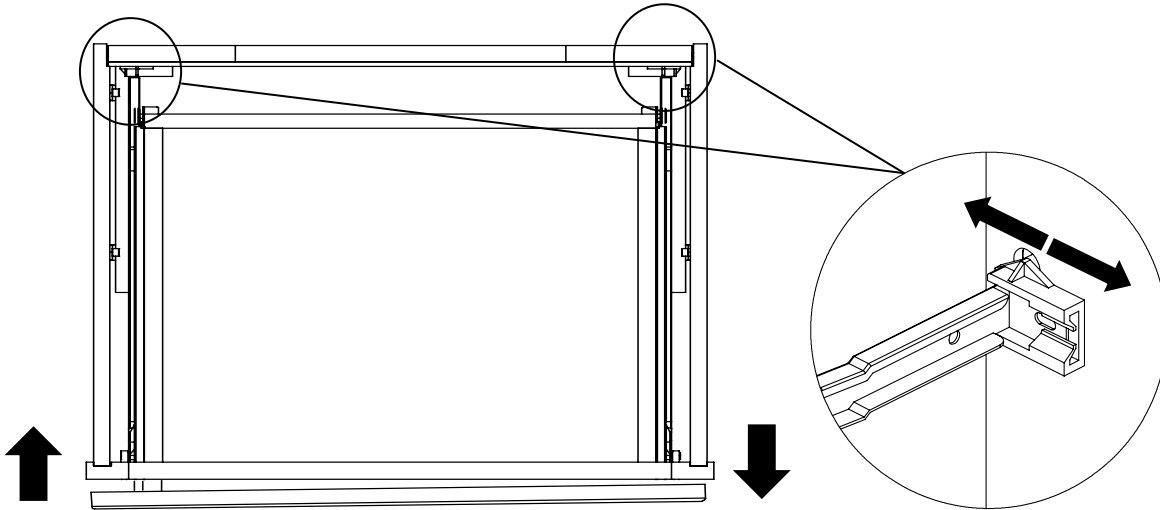
NOTE: It is critical that you do NOT overtighten screw 1.



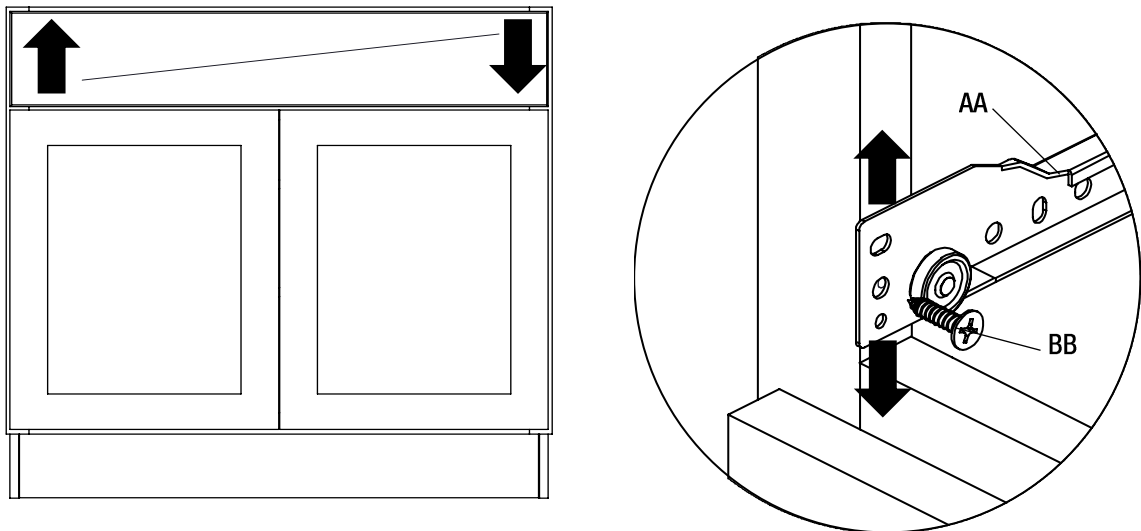
Cabinet Assembly (Continued)

16 (OPTIONAL) Adjusting the drawer face.

- Adjust the drawer face in/out by shifting the Cabinet Glides (AA) to the left or right as shown.



- Adjust the drawer face up or down by loosening the screw (BB) and shifting the Cabinet Glides (AA) upward/downward, then secure it back in place by tightening the screw (BB) as shown.



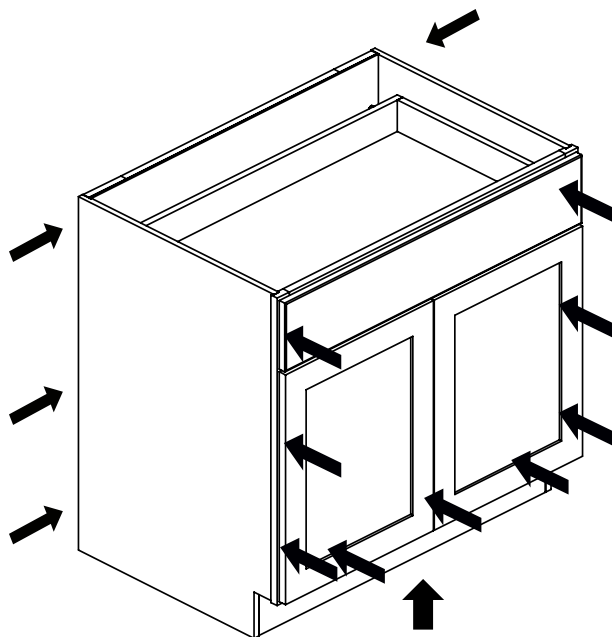
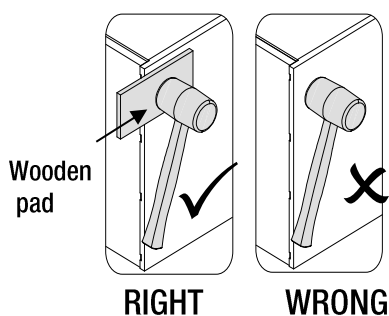
Before putting in use

1 Check before putting in use



IMPORTANT:

- Before putting in to use, use a rubber mallet and wooden pad to tap all locations with male/female connectors to ensure they lock together tightly.
- The wooden pad helps avoid damaging the product.

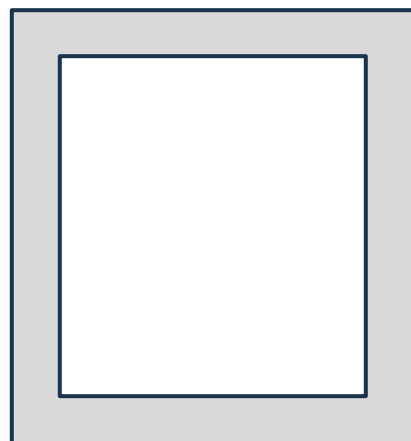


2 Attach the cabinet to the wall.



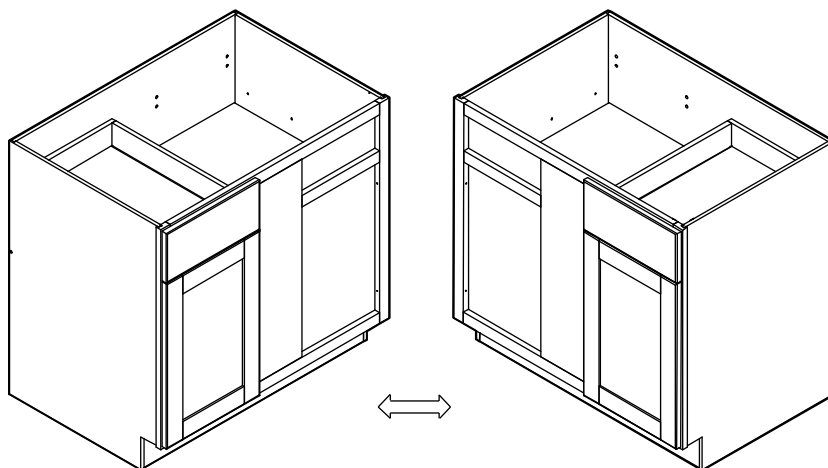
IMPORTANT:

- When attaching cabinet to the wall, making sure that it is attached to the "frame" of the back panel as shown beside.

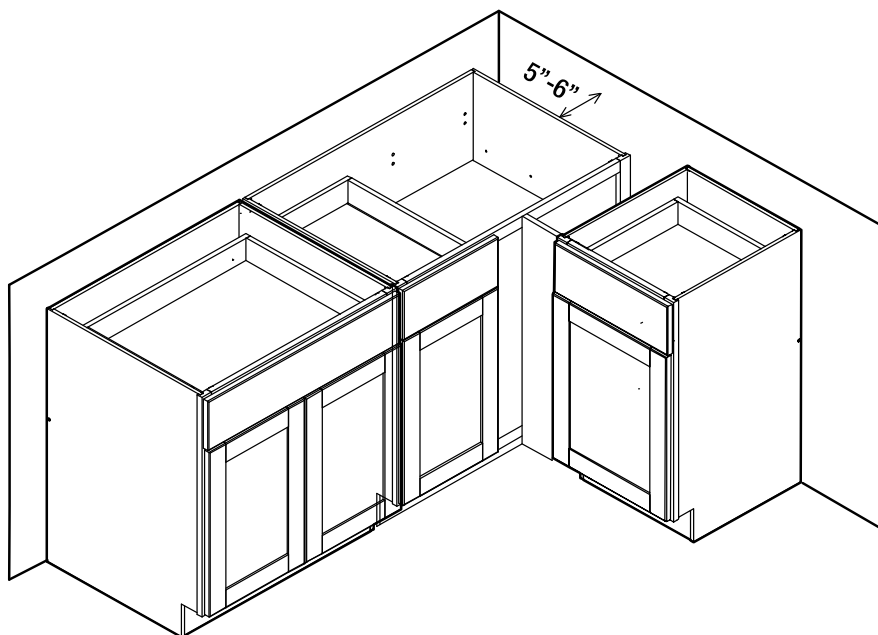


Blind Base Cabinet Installation

- Drawer, door, cover panel can be switched between Left/Right by removing the screws of the slides, hinge, cover panel, then assembling them on the other side and screwing them back.



- The blind corner needs to be installed approximately 5"-6" away from the wall to prevent the drawer and door of the corner unit from interfering with adjacent cabinets.
- Leave 5-6" space between the corner unit and another unit on the opposite side and fill it with a filler such as F630 (**not provided**).



Care and Cleaning

- For normal spills, a damp cloth is sufficient. Dry the surface immediately.
- Doors can be cleaned with most general-purpose household cleaners.
- Do not use caustic agents and/or abrasive scrubbers, or oven cleaners.

- Cabinets can be cleaned with a damp sponge or cloth using soapy water, or most general-purpose household cleaners. Do not use any abrasive cleaner or scrubbers.
- Do not allow liquids to remain on the surface for long periods of time.

HAMPTON BAY®

Questions, problems, missing parts? Before returning to the store,
call Hampton Bay Customer Service
8 a.m. – 7 p.m., EST, Monday – Friday, 9 a.m. – 6 p.m., EST, Saturday

1-855-HD-HAMPTON

HAMPTONBAY.COM

Retain this manual for future use.